

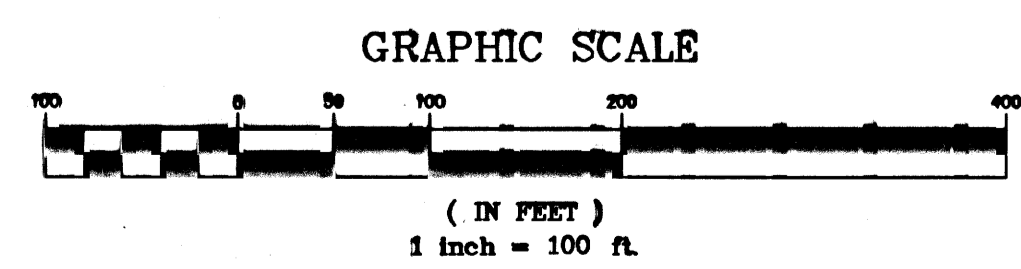
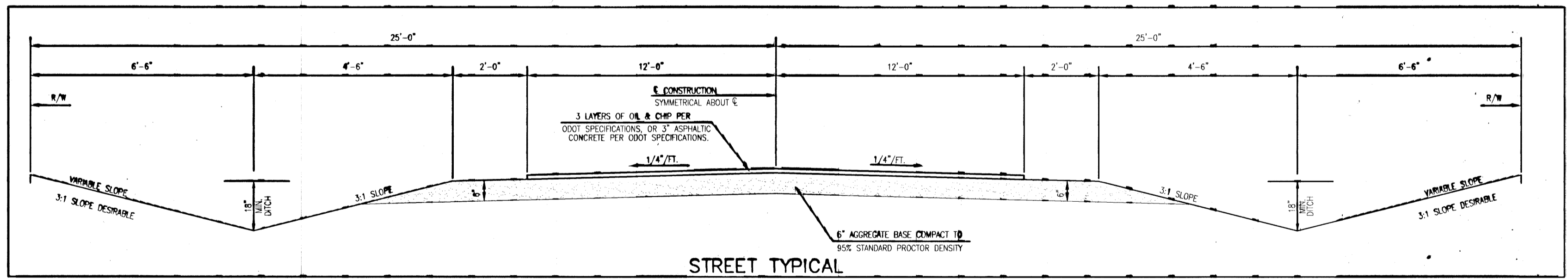
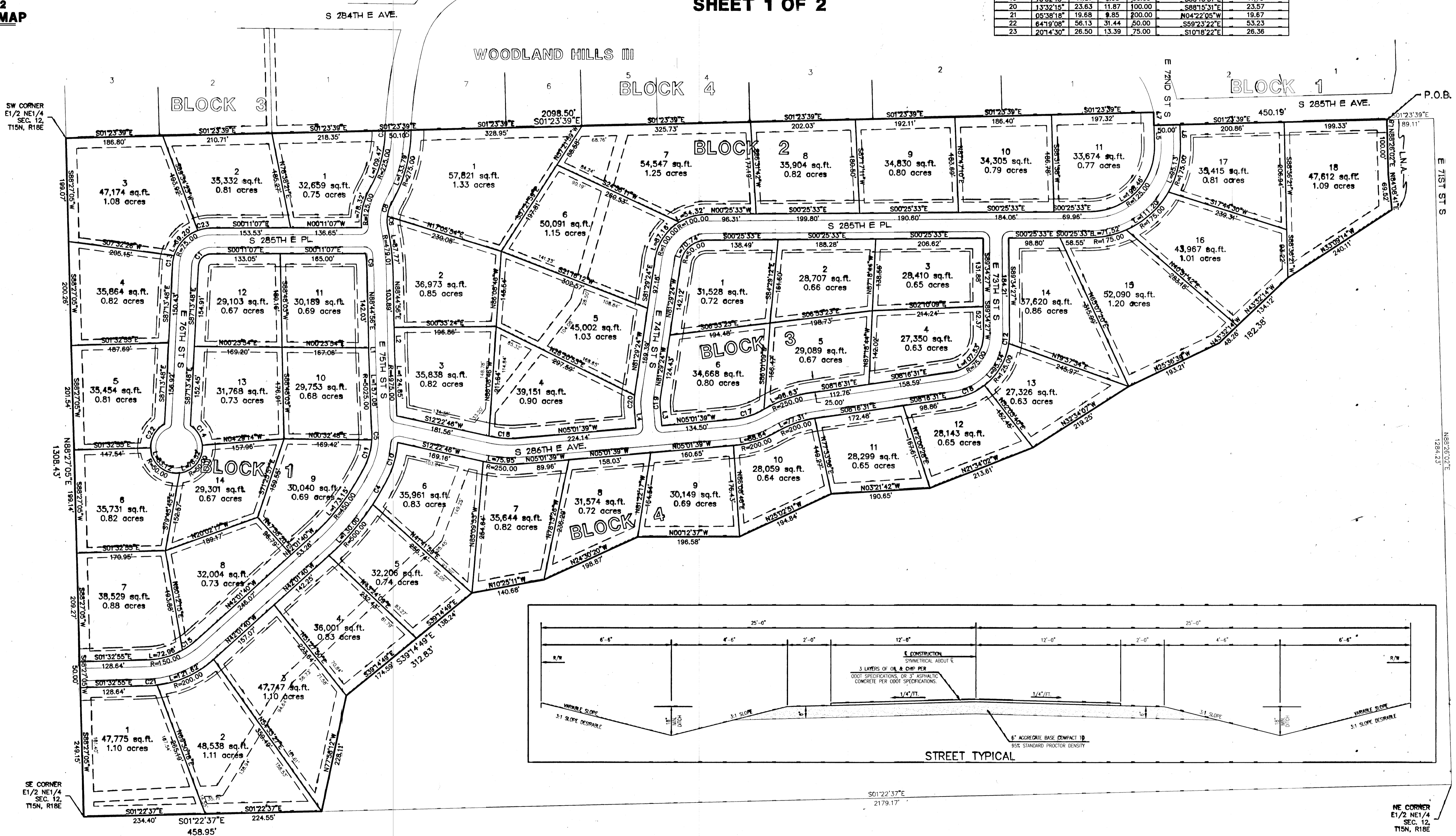
LINE	LENGTH	BEARING
L1	7.42	N88°44'56"E
L2	45.56	N88°44'56"E
L3	39.91	N84°58'21"E
L4	39.91	N84°58'21"E
L5	37.98	N88°36'21"E
L6	37.98	N88°36'21"E
L7	25.00	S88°36'21"W
L8	4.55	S80°19'22"E

FINAL PLAT OF WOODLAND HILLS IV IN SECTION 12, T18N, R15E, IB&M, WAGONER COUNTY, OKLAHOMA SHEET 1 OF 2

CURVE DATA						
CURVE	DELTA	LENGTH	TANGENT	RADIUS	CHORD BEARING	CHORD DISTANCE
1	87°02'41"	37.98	23.74	25.00	S43°42'27"E	34.43
2	34°25'11"	60.07	30.97	100.00	S17°38'08"E	59.17
3	00°25'55"	6.71	3.36	890.55	S88°01'48"E	6.71
4	07°08'59"	62.39	31.24	800.00	N60°29'58"W	62.35
5	05°56'10"	12.95	6.48	125.00	S89°55'33"W	12.84
6	18°17'50"	23.95	12.08	75.00	N87°23'56"E	23.85
7	00°38'43"	9.47	4.73	840.55	S87°55'24"E	9.47
8	23°04'55"	30.21	15.31	75.00	S71°54'41"E	30.01
9	05°19'57"	39.93	19.98	429.01	S86°04'57"W	39.91
10	22°07'56"	67.60	34.23	175.00	N75°08'25"W	67.18
11	23°01'55"	50.25	25.47	125.00	N75°35'25"W	49.91
12	08°47'18"	19.17	9.61	125.00	N86°01'54"W	19.15
13	13°56'13"	18.24	9.17	75.00	S80°15'41"E	18.20
14	52°44'33"	46.03	24.79	50.00	S59°08'29"W	44.42
15	12°36'41"	33.02	16.58	150.00	N35°43'19"W	32.95
16	28°39'49"	64.72	33.10	125.00	N23°08'28"W	64.00
17	25°23'40"	66.48	33.80	150.00	N17°43'28"W	65.94
18	17°24'24"	60.78	30.62	200.00	N03°40'33"E	60.53
19	13°32'15"	11.81	5.93	50.00	S88°15'31"E	11.79
20	13°32'15"	23.63	11.87	100.00	S88°15'31"E	23.57
21	05°38'18"	19.68	9.85	200.00	N04°22'05"W	19.67
22	64°19'08"	56.13	31.44	50.00	S59°23'22"E	53.23
23	20°14'30"	26.50	13.39	75.00	S10°18'22"E	26.38

DRAWN BY: T. ROBINSON DATE: 7/30/2004
CHECKED BY: R. ENTZ FILE NAME: W04448E

NOTES:
ALL EASEMENTS ARE 20 FEET WIDE. SIDE LOT EASEMENTS ARE 10 FEET WIDE EACH SIDE OF LOT LINE FOR A TOTAL OF 20 FEET.
ALL BUILDING SET BACK LINES ARE 25 FEET.
THE EASEMENTS DEDICATED HEREIN FOR PURPOSES OF CONSTRUCTION AND MAINTENANCE OF POTABLE WATER AND SEWER LINES SHALL BE FOR THE EXCLUSIVE USE AND BENEFIT OF WAGONER COUNTY RURAL WATER, SEWER, GAS AND SOLID WASTE MANAGEMENT DISTRICT NO. 4, ITS SUCCESSORS AND ASSIGNS.



ROADS WILL BE MAINTAINED BY WAGONER COUNTY

PREPARED FOR: **Western Realty Company**
Rt. 4, Box 308
Broken Arrow, OK 74014
918/357-2505

PREPARED BY: **Entz Engineering and Associates, Inc.**
CA #535 (expires 6/30/06)
600 Emporia St., Ste. "C"
Muskogee, Oklahoma 74401
(918) 682-3832

