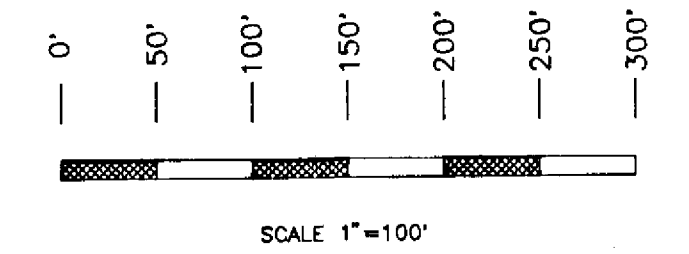


DEA
 Approved 2-27-96
 J. Williams E.S.

WOODLAND HILLS II



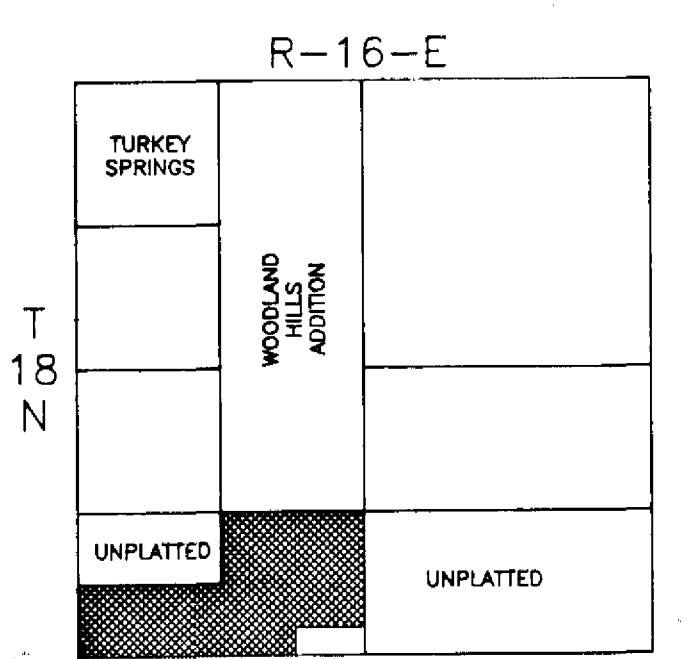
PREPARED BY
 RAMSEY SURVEYING SERVICE
 P.O. BOX 365
 BIXBY, OKLAHOMA 74008
 918 386 4520
 FAX 918 366 4529

AN ADDITION IN THE SOUTHEAST QUARTER OF THE SOUTHWEST QUARTER (SE/4 SW/4) LESS AND EXCEPT THE SOUTH 255' +/- OF THE EAST 636' +/- THEREOF, AND THE SOUTH HALF OF LOT SEVEN (7), ALL IN SECTION SIX (6), TOWNSHIP EIGHTEEN (18) NORTH, RANGE SIXTEEN (16) EAST, OF THE INDIAN BASE AND MERIDIAN, WAGONER COUNTY, STATE OF OKLAHOMA, ACCORDING TO THE U.S. GOVERNMENT SURVEY THEREOF.

PREPARED FOR
 WESTERN REALTY COMPANY
 ROUTE 4 BOX 306
 BROKEN ARROW, OKLAHOMA 74014
 918 357 2505
 OWNER: DAVE MASSEY

57.00 ACRES MORE OR LESS INTO 35 LOTS

NOTE
 STREET RIGHT OF WAY = 50'
 CUL-DE-SAC RADIUS = 50'
 95-02-190



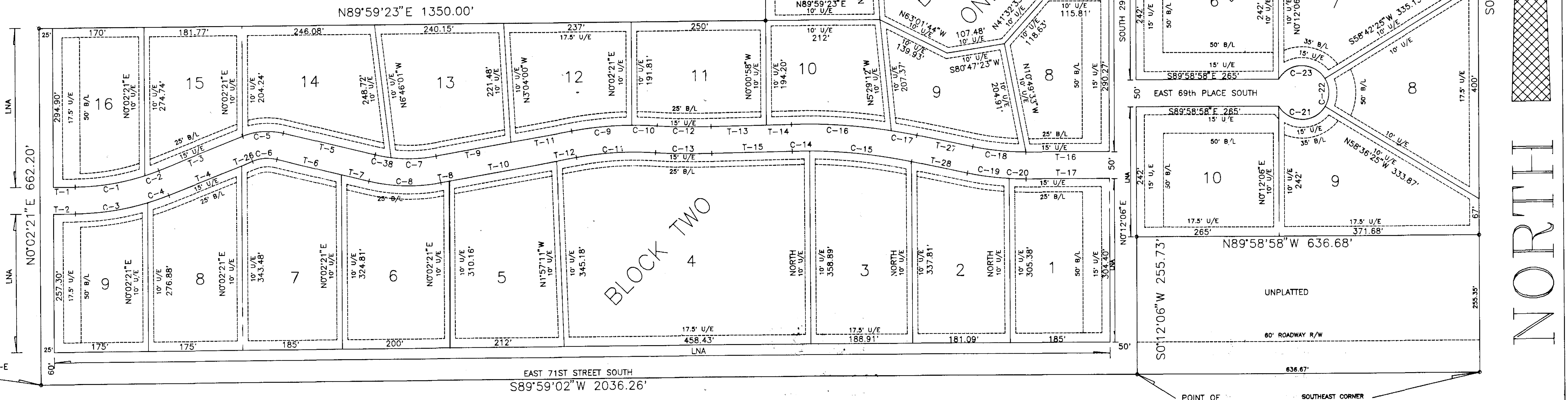
CURVE DATA

C-1	R=425'	L=131.15'	1743°54'	CH=131.00'
C-2	R=425'	L=27.70'	344°08'	CH=27.70'
C-3	R=475'	L=136.27'	16°26'12"	CH=135.80'
C-4	R=475'	L=41.70'	5°01'48"	CH=41.69'
C-5	R=125'	L=77.14'	35°21'23"	CH=75.92'
C-6	R=75'	L=46.28'	35°21'23"	CH=45.55'
C-7	R=275'	L=84.12'	17°31'36"	CH=83.79'
C-8	R=325'	L=134.89'	23°46'49"	CH=133.92'
C-9	R=650'	L=112.38'	9°54'21"	CH=112.24'
C-10	R=650'	L=47.44'	4°10'53"	CH=47.43'
C-11	R=600'	L=147.52'	14°05'14"	CH=147.15'
C-12	R=1071.8196'	L=99.88'	5°20'21"	CH=99.84'
C-13	R=1121.8196'	L=104.54'	5°20'21"	CH=104.51'
C-14	R=975'	L=32.32'	1°53'58"	CH=32.32'
C-15	R=975'	L=190.38'	11°11'15"	CH=190.08'
C-16	R=1025'	L=185.85'	10°23'19"	CH=185.59'
C-17	R=1025'	L=48.27'	2°41'54"	CH=48.27'
C-18	R=475'	L=99.02'	11°56'40"	CH=98.85'
C-19	R=525'	L=78.15'	8°31'45"	CH=78.08'
C-20	R=525'	L=31.29'	3°24'55"	CH=31.29'
C-21	R=50'	L=103.68'	11°8'48"30"	CH=86.08'
C-22	R=50'	L=54.70'	6°24'11"10"	CH=52.02'
C-23	R=50'	L=103.42'	11°8'30"18"	CH=85.94'
C-24	R=50'	L=102.98'	11°8'00"40"	CH=85.72'
C-25	R=50'	L=56.08'	6°41'04"04"	CH=53.19'
C-26	R=50'	L=102.73'	11°74'31"15"	CH=85.59'
C-27	R=250'	L=42.02'	9°37'46"	CH=41.97'
C-28	R=250'	L=96.99'	22°13'42"	CH=96.38'
C-29	R=200'	L=111.20'	31°51'28"	CH=109.78'
C-30	R=96.65'	L=65.97'	39°06'25"	CH=64.70'
C-31	R=96.65'	L=78.65'	46°37'28"	CH=76.50'
C-32	R=96.65'	L=28.12'	16°40'12"	CH=28.02'
C-33	R=46.65'	L=83.37'	10°23'55"	CH=72.71'
C-34	R=50'	L=62.73'	71°53'16"	CH=58.70'
C-35	R=50'	L=89.20'	10°21'31"17"	CH=77.84'
C-36	R=50'	L=75.69'	86°44'14"	CH=68.67'
C-37	R=50'	L=34.17'	39°09'13"	CH=33.51'
C-38	R=275'	L=30.02'	6°15'13"	CH=30'

TANGENT LEGEND

T-1	DUE EAST	40.58'
T-2	DUE EAST	40.61'
T-3	N68°32'00"E	167.33'
T-4	N68°32'00"E	145.73'
T-5	S76°06'37"E	175.43'
T-6	S76°06'37"E	123.03'
T-7	S76°06'37"E	52.40'
T-8	N80°06'34"E	15.51'
T-9	N80°06'34"E	141.01'
T-10	N80°06'34"E	203.04'
T-11	N80°06'34"E	114.91'
T-12	N80°06'34"E	37.37'
T-13	N88°51'27"E	103.01'
T-14	N88°51'27"E	46.65'
T-15	N88°51'27"E	149.66'
T-16	DUE EAST	154.97'
T-17	DUE EAST	154.79'
T-18	N89°58'58"E	10'
T-19	N89°58'58"E	10'
T-20	N88°36'46"W	106.98'
T-21	N88°36'46"W	108.02'
T-22	N56°45'18"W	45.81'
T-23	N56°45'18"W	45.81'
T-24	S20°50'47"W	148.80'
T-25	S20°50'47"W	148.80'
T-26	N68°32'00"E	21.60'
T-27	S78°03'20"E	106.00'
T-28	S78°03'20"E	106.00'

LEGEND
 U/E - UTILITY EASEMENT
 B/L - BUILDING LINE
 LNA - LIMITS OF NO ACCESS
 C - CURVED LINE
 T - TANGENT LINE
 L - LENGTH OF CURVE
 CH - CHORD (TANGENT LINE ACROSS CURVE)



SOUTHWEST CORNER SECTION 6, T-18-N, R-16-E

EAST 71ST STREET SOUTH
 S89°59'02"W 2036.26'

POINT OF BEGINNING
 SOUTHWEST CORNER SE/4 SW/4 SECTION 6 T-18-N, R-16-E