

Plat Cabinet 13 - 284 A+B

P.U.D. NO. 66

# THE VILLAS I AT FOREST RIDGE

## "BLOCKS 1, 2, 3 & 9"

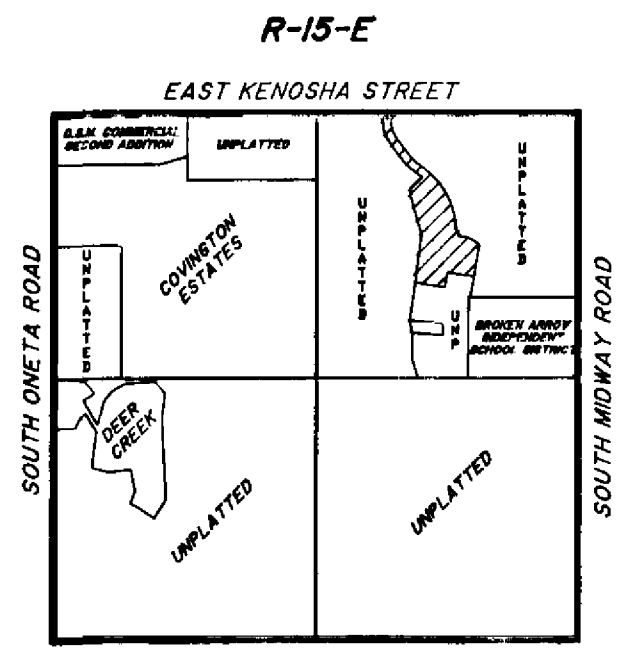
AN ADDITION TO THE CITY OF BROKEN ARROW,  
BEING A SUBDIVISION OF A PART OF THE NE/4 OF  
SECTION 10, T-18-N, R-15-E, WAGONER COUNTY, STATE OF OKLAHOMA.

OWNER:  
**THE ROBSON COMPANIES, INC.**

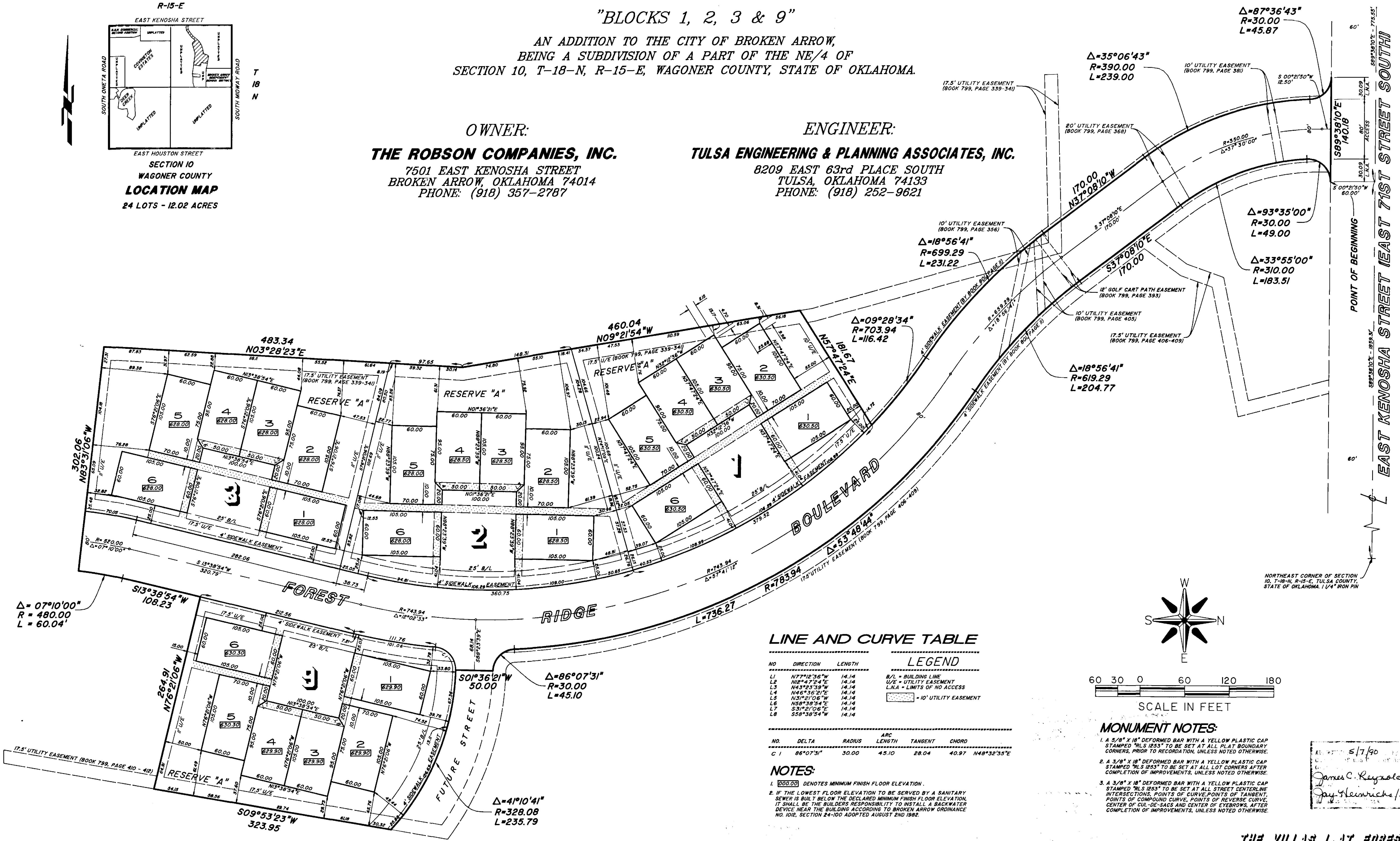
7501 EAST KENOSHA STREET  
BROKEN ARROW, OKLAHOMA 74014  
PHONE: (918) 357-2787

ENGINEER:  
**TULSA ENGINEERING & PLANNING ASSOCIATES, INC.**

8209 EAST 63rd PLACE SOUTH  
TULSA, OKLAHOMA 74133  
PHONE: (918) 252-9621



SECTION 10  
WAGONER COUNTY  
**LOCATION MAP**  
24 LOTS - 12.02 ACRES



NORTH QUARTER CORNER OF SECTION 10, T-18-N, R-15-E, TULSA COUNTY, STATE OF OKLAHOMA. 3/8" IRON PIN WITH YELLOW PLASTIC CAP STAMPED "NLS 1253"

NORTHEAST CORNER OF SECTION 10, T-18-N, R-15-E, TULSA COUNTY, STATE OF OKLAHOMA. 1/4" IRON PIN

### LINE AND CURVE TABLE

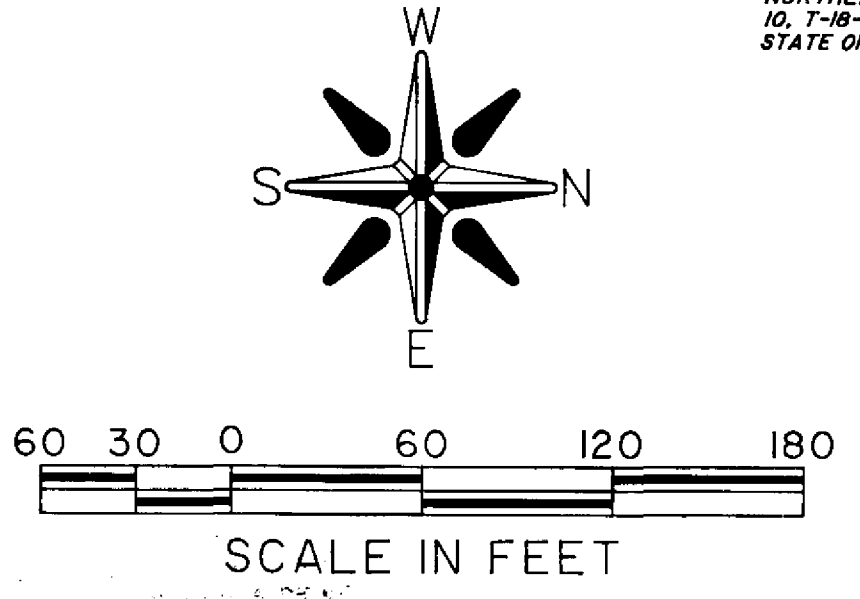
NO.	DIRECTION	LENGTH	ARC	TANGENT	CHORD
L1	N77°12'56"W	14.14	B/L		
L2	N12°47'24"E	14.14	B/L		
L3	N43°23'39"W	14.14	B/L		
L4	N48°51'07"E	14.14	B/L		
L5	N31°21'06"W	14.14	B/L		
L6	N58°38'54"E	14.14	B/L		
L7	S31°21'06"E	14.14	B/L		
L8	S58°38'54"W	14.14	B/L		

### LEGEND

- B/L = BUILDING LINE
- U/E = UTILITY EASEMENT
- L.N.A. = LIMITS OF NO ACCESS
- [Symbol] = 10' UTILITY EASEMENT

NO.	DELTA	RADIUS	LENGTH	TANGENT	CHORD
C1	86°07'31"	30.00	45.10	28.04	40.97

- NOTES:**
1. [Symbol] DENOTES MINIMUM FINISH FLOOR ELEVATION.
  2. IF THE LOWEST FLOOR ELEVATION TO BE SERVED BY A SANITARY SEWER IS BUILT BELOW THE DECLARED MINIMUM FINISH FLOOR ELEVATION, IT SHALL BE THE BUILDERS RESPONSIBILITY TO INSTALL A BACKWATER DEVICE NEAR THE BUILDING ACCORDING TO BROKEN ARROW ORDINANCE NO. 102, SECTION 24-100 ADOPTED AUGUST 2ND 1982.



### MONUMENT NOTES:

1. A 3/8" X 18" DEFORMED BAR WITH A YELLOW PLASTIC CAP STAMPED "NLS 1253" TO BE SET AT ALL PLAT BOUNDARY CORNERS, PRIOR TO RECORDATION, UNLESS NOTED OTHERWISE.
2. A 3/8" X 18" DEFORMED BAR WITH A YELLOW PLASTIC CAP STAMPED "NLS 1253" TO BE SET AT ALL LOT CORNERS AFTER COMPLETION OF IMPROVEMENTS, UNLESS NOTED OTHERWISE.
3. A 3/8" X 18" DEFORMED BAR WITH A YELLOW PLASTIC CAP STAMPED "NLS 1253" TO BE SET AT ALL STREET CENTERLINE INTERSECTIONS, POINTS OF CURVE, POINTS OF TANGENT, POINTS OF COMPOUND CURVE, POINTS OF REVERSE CURVE, CENTER OF CUL-DE-SACS AND CENTER OF EYEBROWS, AFTER COMPLETION OF IMPROVEMENTS, UNLESS NOTED OTHERWISE.

5/7/90  
James C. Reynolds/sj  
Jay Heinrichs/sj