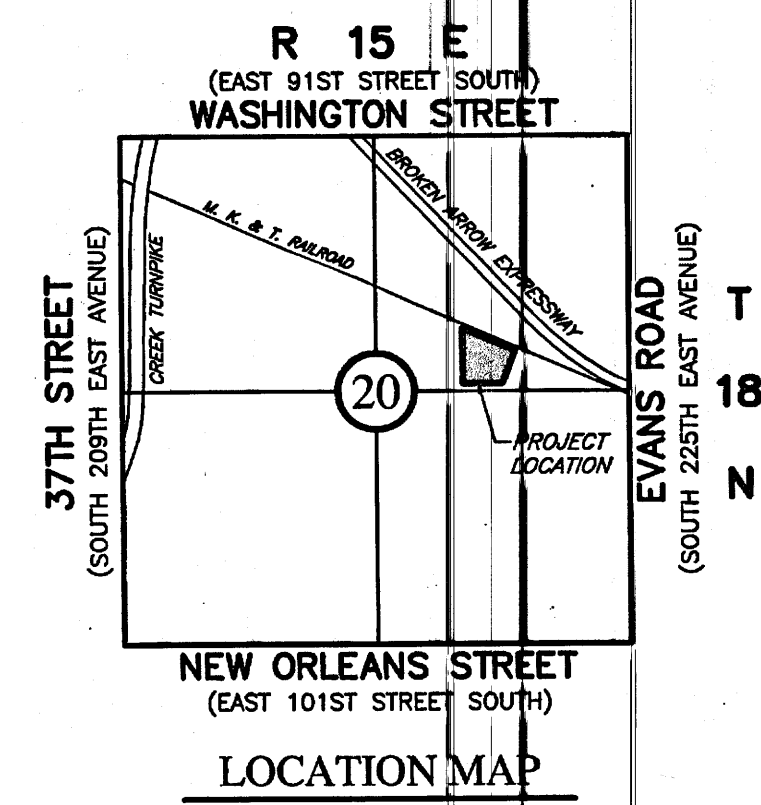
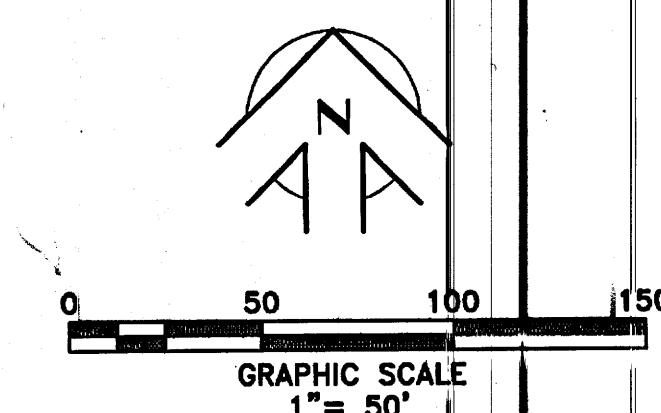


Final Subdivision Plat VENTURE 777

A part of the NE/4 of Section 20, T-18-N, R-15-E, of the I.B. & M,
 City of Broken Arrow, Wagoner County, State of Oklahoma.

Addition has 1 Lot and 1 Reserve in 1 Block
 and contains 5.26 acres, more or less.



OWNER
 Venture 777, LLC
 1609 W. Detroit
 Broken Arrow, Oklahoma 74012
 (918) 251-3754

SURVEYOR
 White Surveying Company
 9936 E. 55th Place
 Tulsa, Oklahoma 74146
 (918) 663-6924
 Certificate of Authorization No. CA1098
 Expires June 30, 2009

ENGINEER
 Khoury Engineering, Inc.
 1435 East 41st Street
 Tulsa, Oklahoma 74105
 (918) 712-8768
 Certificate of Authorization No. 3751
 Expires June 30, 2009

BASIS OF BEARING
 THE BEARINGS SHOWN HEREON ARE BASED ON
 THE SOUTH LINE OF THE NE/4 BEING N 89°56'10" W
 BASED UPON THE LEGAL DESCRIPTION.

MONUMENTATION
 ALL CORNERS WERE SET USING A 3/8" IRON PIN
 WITH CAP

LEGEND
 B/L = BUILDING LINE
 U/E = UTILITY EASEMENT

ADDRESSES
 ADDRESSES SHOWN ON THIS PLAT ARE ACCURATE
 AT THE TIME THE PLAT WAS FILED. ADDRESSES
 ARE SUBJECT TO CHANGE AND SHOULD NEVER BE
 RELIED ON IN PLACE OF THE LEGAL DESCRIPTION.

RAILROAD RIGHT-OF-WAY
 DEED FILED FOR RECORD IN WAGONER
 COUNTY SEPTEMBER 8, 1919
 DOCUMENT NO. 20923 & 20924,
 BOOK 135, PAGE 298 & 299

RAILROAD RIGHT-OF-WAY
 DEED FILED IN WAGONER
 COUNTY APPEARS TO BE
 IN ERROR, BOOK & PAGE
 ARE UNAVAILABLE

RAILROAD RIGHT-OF-WAY
 DEED FILED FOR RECORD
 IN WAGONER COUNTY
 SEPTEMBER 8, 1919,
 BOOK 135, PAGE 296

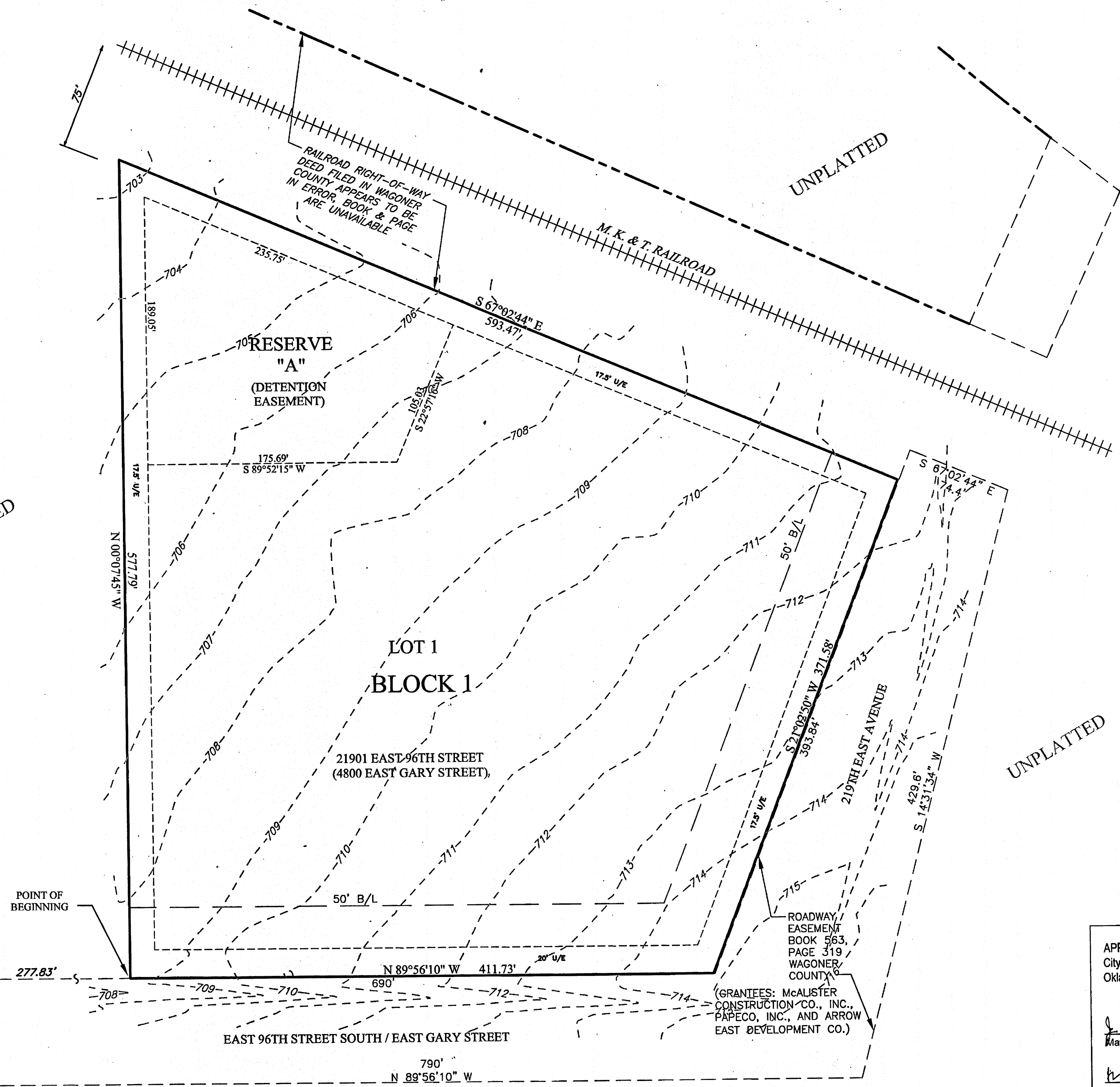
UNPLATTED

UNPLATTED

UNPLATTED

BACKFLOW PREVENTER REQUIRED			
LOT NO.	FINISH FLOOR ELEVATION	UPSTREAM MANHOLE	DOWNSTREAM MANHOLE
1	712.00	712.34	708.88

STORMWATER DISPOSITION NOTE:
 STORMWATER DETENTION ACCOMMODATIONS FOR THIS
 SITE ARE PROVIDED ON-SITE BY CONSTRUCTING A
 DETENTION POND. DD NO. 021908-08



APPROVED 2-19-08 by the
 City Council of the City of Broken Arrow,
 Oklahoma.
J. Wade McCalister Sr.
 Mayor
Mary E. Bryce
 Attest: City Clerk
 4-23-08

BENCHMARK
 CHISELED "L" AT NE CORNER OF
 SIDEWALK AT 21900 E. 96TH
 STREET
 ELEVATION= 712.86
 DATUM= NGVD 1929