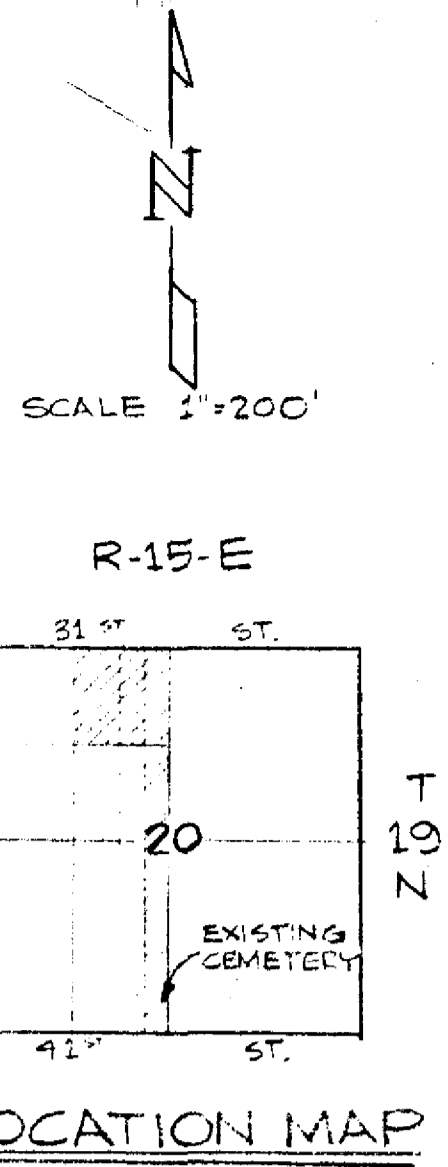


Revised from 410 page 188

*** TULSA EAST GARDENS**

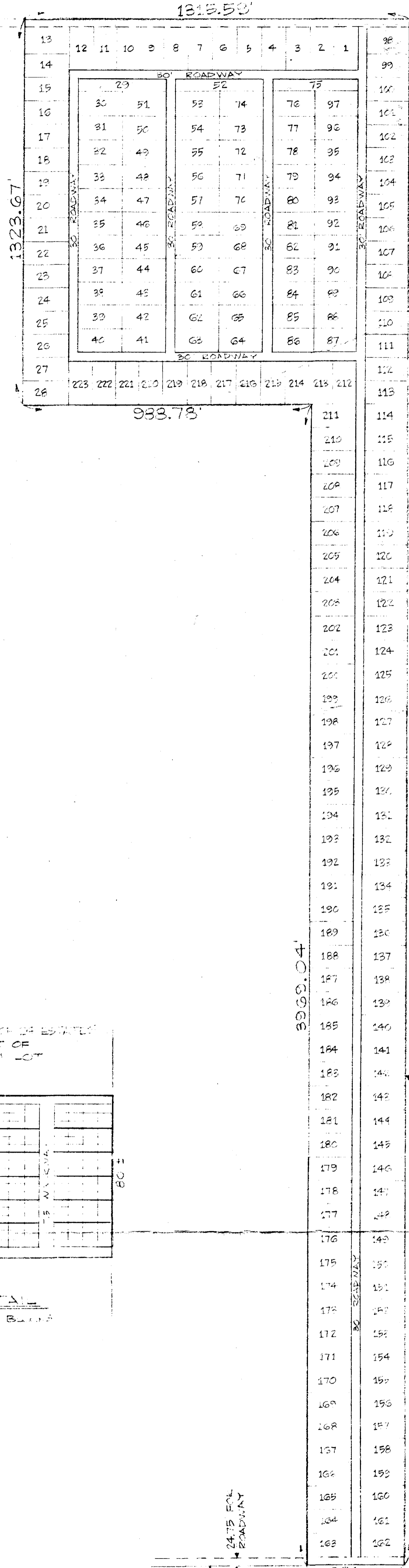
AN ADDITION IN WAGONER COUNTY, OKLAHOMA

NE/4 OF NW/4 & E/2 OF E/2 OF SE/4 OF NW/4 & E/2 OF E/2 OF E/2 OF NW/4, IN SEC. 20, T19N, R15E



LOCATION MAP

N.W. SEC. 20-19N-15E



Plat Book 4 Page 24

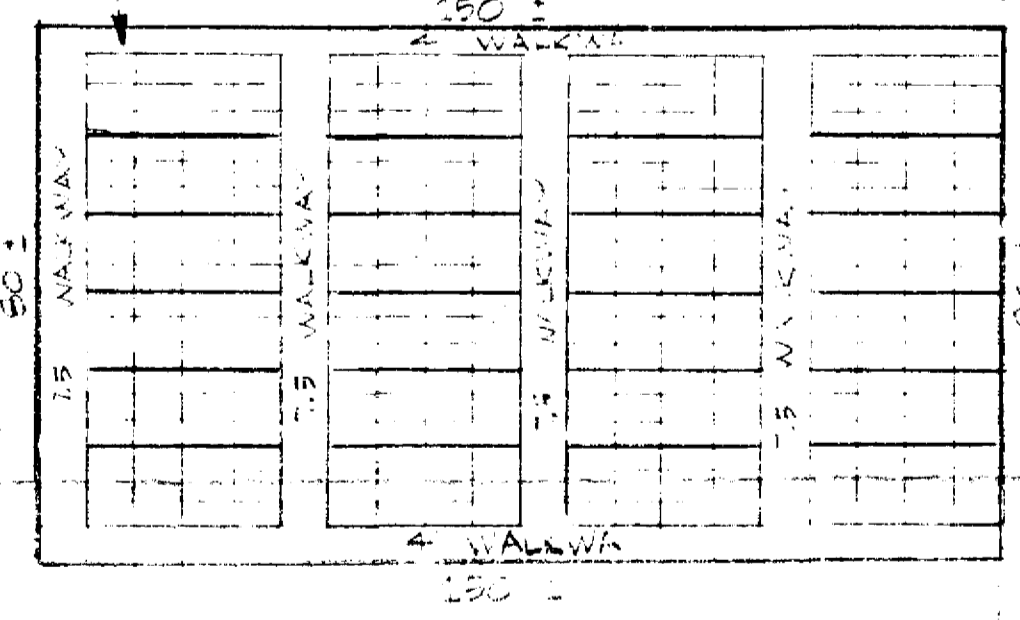
STATE OF OKLAHOMA
COUNTY OF WAGONER
Filed for Record in the Office of the
COUNTY CLERK AND RECORDED

JUN 12 1970

BY *[Signature]* CLERK
DAVID C. WHITE, County Clerk

PREPARED FOR:
T. E. G.
ROUTE 3
BROKEN ARROW, OKLA.

BLOCK TO CONSIST OF 12 LOTS
ESTATE TO CONSIST OF
12 LOTS (MINIMUM LOT
SIZE 4' x 7 1/2')



BLOCK DETAIL
TYPICAL FOR 203 BLOCK
1" = 30'

I, DAVID C. WHITE OF TULSA COUNTY, STATE OF OKLAHOMA, DO HEREBY CERTIFY THAT THE ABOVE IS A TRUE AND CORRECT PLAT.

WITNESS MY HAND & SEAL THIS 3RD DAY OF MAY 1970

[Signature]
PROFESSIONAL SURVEYOR