

# TIMBER RIDGE PLAZA

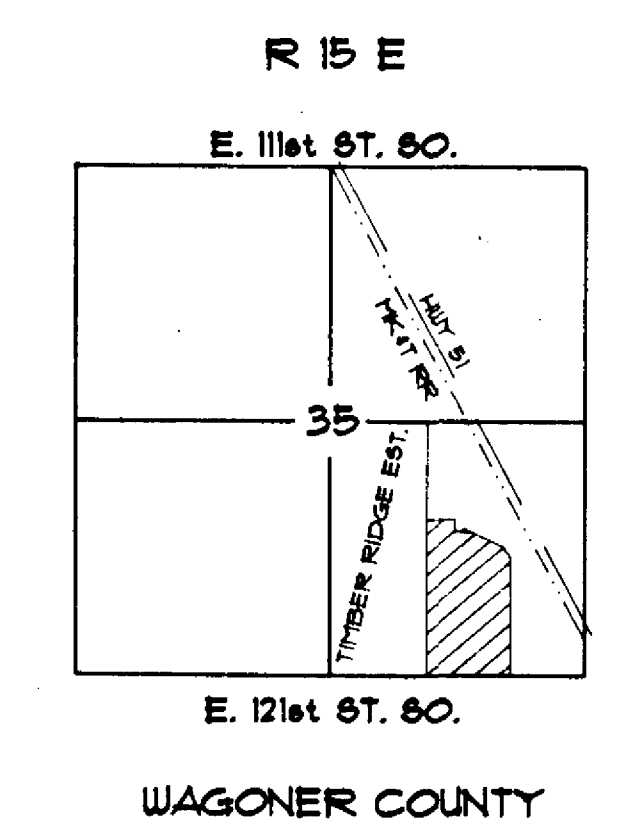
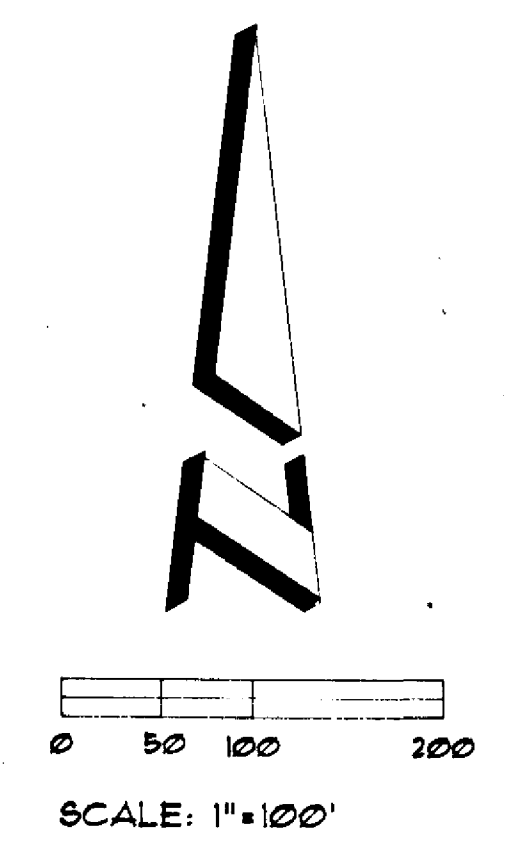
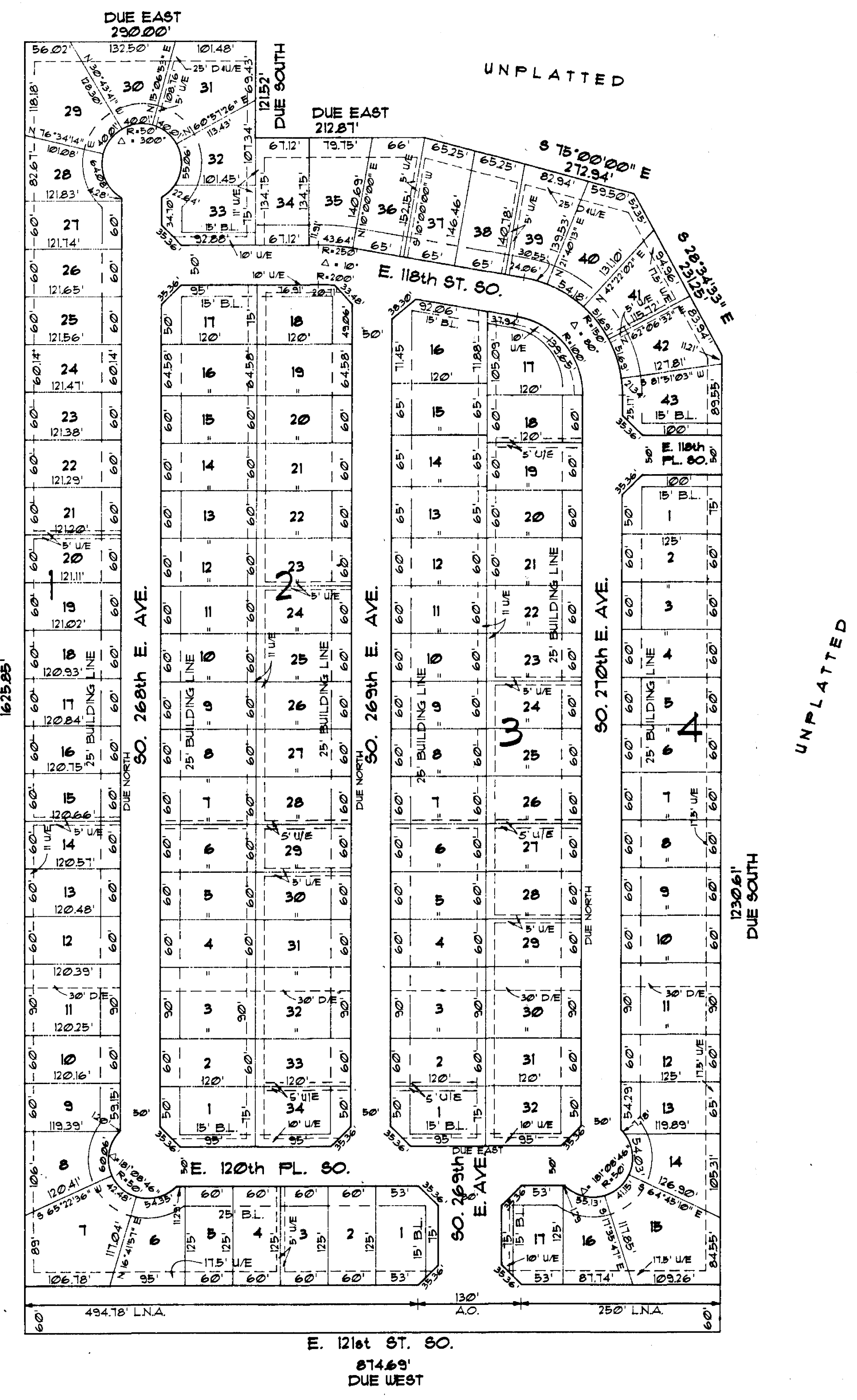
A SUBDIVISION TO THE CITY OF COWETA,  
 SITUATED IN THE SE/4 OF SECTION 35,  
 T-18-N, R-15-E, WAGONER COUNTY, OKLAHOMA.

**OWNER:**  
 ROLAND INVESTMENTS, LTD.  
 P.O. BOX 660  
 COWETA, OK. 74429  
 918-486-5046

**ENGINEER:**  
 JOE E. DONELSON  
 17440 SO. 89th E. AVE.  
 BIXBY, OKLAHOMA 74008  
 918-366-3413

**ADDRESSES**

LOT	BLOCK	ADDRESS	LOT	BLOCK	ADDRESS
1	1	26930 E. 120th PL. SO.	1	2	11985 SO. 268th E. AVE.
2	1	26900 E. 120th PL. SO.	2	2	11975 SO. 268th E. AVE.
3	1	26880 E. 120th PL. SO.	3	2	11965 SO. 268th E. AVE.
4	1	26860 E. 120th PL. SO.	4	2	11955 SO. 268th E. AVE.
5	1	26840 E. 120th PL. SO.	5	2	11945 SO. 268th E. AVE.
6	1	26820 E. 120th PL. SO.	6	2	11935 SO. 268th E. AVE.
7	1	26800 E. 120th PL. SO.	7	2	11925 SO. 268th E. AVE.
8	1	11900 SO. 268th E. AVE.	8	2	11915 SO. 268th E. AVE.
9	1	11990 SO. 268th E. AVE.	9	2	11905 SO. 268th E. AVE.
10	1	11980 SO. 268th E. AVE.	10	2	11885 SO. 268th E. AVE.
11	1	11970 SO. 268th E. AVE.	11	2	11875 SO. 268th E. AVE.
12	1	11960 SO. 268th E. AVE.	12	2	11865 SO. 268th E. AVE.
13	1	11950 SO. 268th E. AVE.	13	2	11855 SO. 268th E. AVE.
14	1	11940 SO. 268th E. AVE.	14	2	11845 SO. 268th E. AVE.
15	1	11930 SO. 268th E. AVE.	15	2	11835 SO. 268th E. AVE.
16	1	11920 SO. 268th E. AVE.	16	2	11825 SO. 268th E. AVE.
17	1	11910 SO. 268th E. AVE.	17	2	11815 SO. 268th E. AVE.
18	1	11900 SO. 268th E. AVE.	18	2	11810 SO. 269th E. AVE.
19	1	11880 SO. 268th E. AVE.	19	2	11820 SO. 269th E. AVE.
20	1	11870 SO. 268th E. AVE.	20	2	11830 SO. 269th E. AVE.
21	1	11860 SO. 268th E. AVE.	21	2	11840 SO. 269th E. AVE.
22	1	11850 SO. 268th E. AVE.	22	2	11850 SO. 269th E. AVE.
23	1	11840 SO. 268th E. AVE.	23	2	11860 SO. 269th E. AVE.
24	1	11830 SO. 268th E. AVE.	24	2	11870 SO. 269th E. AVE.
25	1	11820 SO. 268th E. AVE.	25	2	11880 SO. 269th E. AVE.
26	1	11810 SO. 268th E. AVE.	26	2	11900 SO. 269th E. AVE.
27	1	11790 SO. 268th E. AVE.	27	2	11910 SO. 269th E. AVE.
28	1	11780 SO. 268th E. AVE.	28	2	11920 SO. 269th E. AVE.
29	1	11770 SO. 268th E. AVE.	29	2	11930 SO. 269th E. AVE.
30	1	11765 SO. 268th E. AVE.	30	2	11940 SO. 269th E. AVE.
31	1	11775 SO. 268th E. AVE.	31	2	11950 SO. 269th E. AVE.
32	1	11785 SO. 268th E. AVE.	32	2	11960 SO. 269th E. AVE.
33	1	11795 SO. 268th E. AVE.	33	2	11970 SO. 269th E. AVE.
34	1	26880 E. 118th ST. SO.	34	2	11980 SO. 269th E. AVE.
35	1	26890 E. 118th ST. SO.	1	3	11985 SO. 269th E. AVE.
36	1	26900 E. 118th ST. SO.	2	3	11975 SO. 269th E. AVE.
37	1	26920 E. 118th ST. SO.	3	3	11965 SO. 269th E. AVE.
38	1	26940 E. 118th ST. SO.	4	3	11955 SO. 269th E. AVE.
39	1	26960 E. 118th ST. SO.	5	3	11945 SO. 269th E. AVE.
40	1	26980 E. 118th ST. SO.	6	3	11935 SO. 269th E. AVE.
41	1	11825 SO. 270th E. AVE.	7	3	11925 SO. 269th E. AVE.
42	1	11835 SO. 270th E. AVE.	8	3	11915 SO. 269th E. AVE.
43	1	11845 SO. 270th E. AVE.	9	3	11905 SO. 269th E. AVE.
1	4	11855 SO. 270th E. AVE.	10	3	11895 SO. 269th E. AVE.
2	4	11865 SO. 270th E. AVE.	11	3	11885 SO. 269th E. AVE.
3	4	11875 SO. 270th E. AVE.	12	3	11875 SO. 269th E. AVE.
4	4	11885 SO. 270th E. AVE.	13	3	11865 SO. 269th E. AVE.
5	4	11905 SO. 270th E. AVE.	14	3	11855 SO. 269th E. AVE.
6	4	11915 SO. 270th E. AVE.	15	3	11845 SO. 269th E. AVE.
7	4	11925 SO. 270th E. AVE.	16	3	11835 SO. 269th E. AVE.
8	4	11935 SO. 270th E. AVE.	17	3	11825 SO. 269th E. AVE.
9	4	11945 SO. 270th E. AVE.	18	3	11820 SO. 270th E. AVE.
10	4	11955 SO. 270th E. AVE.	19	3	11830 SO. 270th E. AVE.
11	4	11965 SO. 270th E. AVE.	20	3	11840 SO. 270th E. AVE.
12	4	11975 SO. 270th E. AVE.	21	3	11850 SO. 270th E. AVE.
13	4	11985 SO. 270th E. AVE.	22	3	11860 SO. 270th E. AVE.
14	4	11995 SO. 270th E. AVE.	23	3	11870 SO. 270th E. AVE.
15	4	27030 E. 120th PL. SO.	24	3	11880 SO. 270th E. AVE.
16	4	26990 E. 120th PL. SO.	25	3	11890 SO. 270th E. AVE.
17	4	26960 E. 120th PL. SO.	26	3	11900 SO. 270th E. AVE.
			27	3	11910 SO. 270th E. AVE.
			28	3	11920 SO. 270th E. AVE.
			29	3	11930 SO. 270th E. AVE.
			30	3	11940 SO. 270th E. AVE.
			31	3	11950 SO. 270th E. AVE.
			32	3	11960 SO. 270th E. AVE.



**LOCATION MAP**

30.10 ACRES  
 NO. LOTS 126  
 JUNE 15, 1996

**LEGEND**

A.O.	ACCESS OPENING
L.N.A.	LIMITS OF NO ACCESS
B.L.	BUILDING LINE
I.P.	IRON PIN
C.L.	CENTER LINE
U/E	UTILITY EASEMENT
D.U/E	DRAINAGE & UTILITY ESM'T
D/E	DRAINAGE ESM'T

FINAL PLATT  
 CERTIFICATE OF APPROVAL  
 I HEREBY CERTIFY THAT THIS PLATT WAS  
 APPROVED BY THE COWETA CITY COUNCIL  
 ON June 17, 1996  
 BY [Signature]  
 WAGONER COUNTY CLERK  
 THIS APPROVAL IS VOID IF THE ABOVE  
 SIGNATURE IS NOT SIGNED BY THE CITY CLERK  
 BY [Signature]  
 JERRY FIELDS