

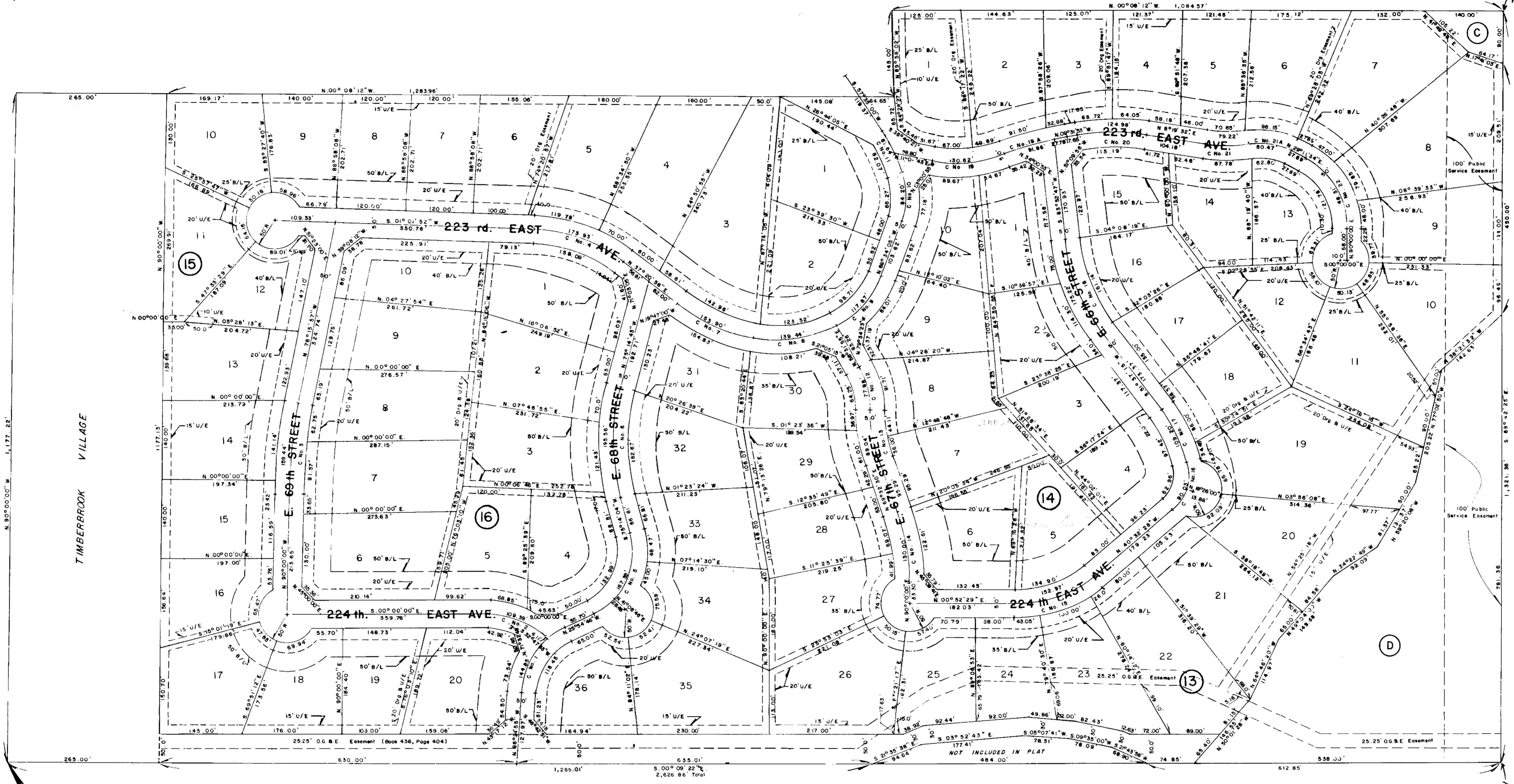
This reproduction meets the requirements as outlined in Senate Bill 377, Section 518, as amended.

TRIANGLE/A & E, Inc.  
 BOX 306 OKLAHOMA CITY 73101  
*Handwritten notes:*  
 Timberbrook Maps 48-49  
 Surveyed by...  
 M. W. ...  
 M. W. ...

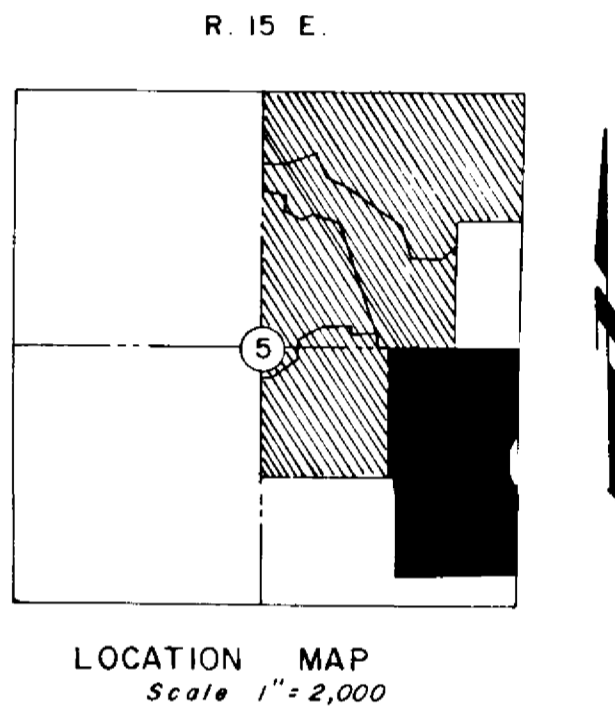
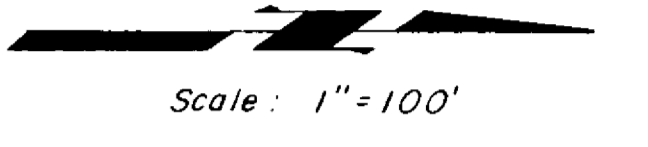
# TIMBERBROOK IV

A SUBDIVISION OF A PART OF THE E1/2 SEC. 5, T18N, R15E, I.M.  
 WAGONER COUNTY, OKLAHOMA

BLOCKS 13, 14, 15 And 16, BLOCK "C" And BLOCK "D"



NW Corner of E75E  
 NE Corner of E75E



CURVE DATA				
CURVE NO	Δ	R	T	L
1	60°30'09"	137.17'	80.00'	144.85'
2	32°47'43"	191.12'	56.24'	109.39'
3	11°44'03"	778.92'	80.00'	159.44'
4	36°19'08"	274.40'	90.00'	173.93'
5	78°51'10"	121.63'	100.00'	167.39'
6	28°31'13"	379.96'	100.00'	195.56'
7	25°04'07"	351.74'	78.20'	153.90'
8	36°56'12"	216.30'	72.24'	139.44'
9	43°54'44"	153.79'	62.00'	117.87'
10	41°05'02"	117.42'	44.00'	84.20'
11	12°45'53"	393.36'	44.00'	87.64'
12	31°28'06"	141.98'	40.00'	77.98'
13	20°27'30"	249.37'	45.00'	89.04'
14	20°27'30"	364.08'	65.70'	130.00'
15	41°24'57"	211.63'	80.00'	152.97'
16	62°02'48"	83.14'	50.00'	90.03'
17	25°47'29"	242.58'	85.54'	109.20'
18	32°15'32"	311.21'	90.00'	175.22'
19	31°27'03"	237.93'	67.00'	130.62'
19-A	10°50'27"	632.33'	60.00'	119.84'
20	17°51'25"	401.01'	63.00'	124.98'
21	18°38'08"	231.15'	40.00'	79.22'
21-A	40°30'10"	113.84'	42.00'	80.47'
22	60°48'26"	159.75'	82.00'	148.31'

MAPCO  
 ENGINEERING CORPORATION  
 2500 S. BROADWAY 348-0550  
 EDMOND, OKLAHOMA 73034

SE Cor, Sec 5, T18N, R15E, I.M.