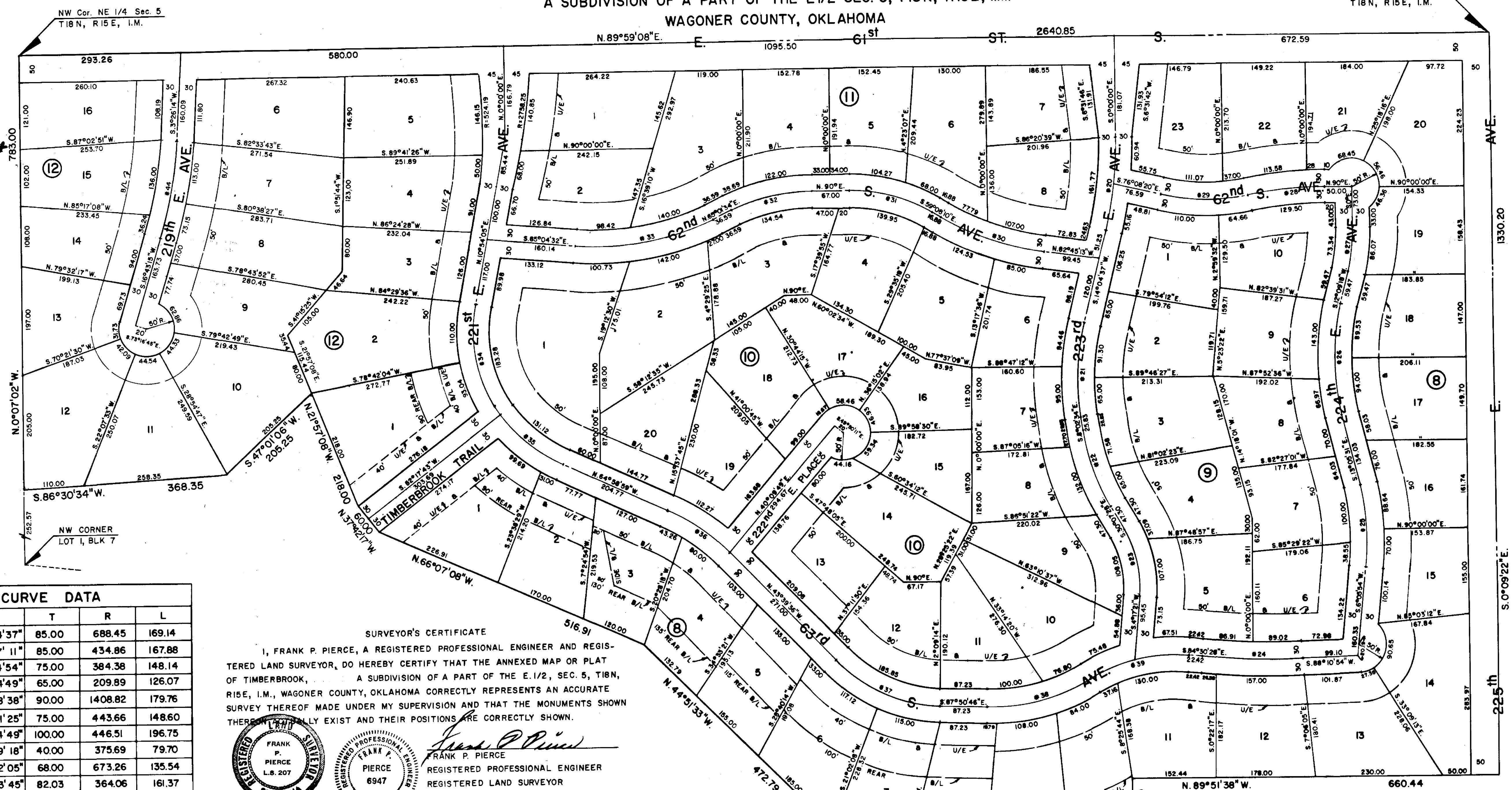


TIMBERBROOK

ALL OF BLOCKS 8, 9, 10, 11, & 12
 A SUBDIVISION OF A PART OF THE E 1/2 SEC. 5, T18N, R15E, I.M.
 WAGONER COUNTY, OKLAHOMA

NE Cor. Sec. 5
 T18N, R15E, I.M.

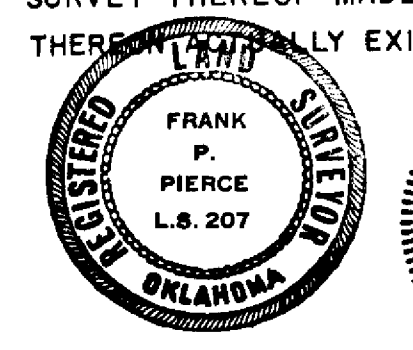


Plot Book 6 Page 2130
 SF 28 1973
 JACK C. POWERS, County Clerk
 W. Marie Boyd

CURVE DATA				
CURVE NO.	Δ	T	R	L
20	14° 04' 37"	85.00	688.45	169.14
21	22° 07' 11"	85.00	434.86	167.88
22	22° 04' 54"	75.00	384.38	148.14
23	34° 24' 49"	65.00	209.89	126.07
24	7° 18' 38"	90.00	1408.82	179.76
25	19° 11' 25"	75.00	443.66	148.60
26	25° 14' 49"	100.00	446.51	196.75
27	12° 09' 18"	40.00	375.69	79.70
28	11° 32' 05"	68.00	673.26	135.54
29	25° 23' 45"	82.03	364.06	161.37
30	23° 37' 03"	100.00	478.31	197.16
31	30° 51' 50"	80.00	289.81	156.11
32	24° 58' 26"	75.00	338.67	147.62
33	29° 53' 54"	130.00	486.89	254.07
34	46° 39' 19"	110.00	255.08	207.71
35	29° 13' 45"	74.84	287.02	146.42
36	21° 19' 23"	68.00	361.21	134.43
37	44° 11' 10"	110.00	270.99	208.99
38	33° 25' 03"	100.00	333.13	194.30
39	36° 45' 21"	96.54	290.58	186.41
44	13° 17' 01"	90.00	772.91	179.19

SURVEYOR'S CERTIFICATE
 I, FRANK P. PIERCE, A REGISTERED PROFESSIONAL ENGINEER AND REGISTERED LAND SURVEYOR, DO HEREBY CERTIFY THAT THE ANNEXED MAP OR PLAT OF TIMBERBROOK, A SUBDIVISION OF A PART OF THE E 1/2, SEC. 5, T18N, R15E, I.M., WAGONER COUNTY, OKLAHOMA CORRECTLY REPRESENTS AN ACCURATE SURVEY THEREOF MADE UNDER MY SUPERVISION AND THAT THE MONUMENTS SHOWN THEREON FULLY EXIST AND THEIR POSITIONS ARE CORRECTLY SHOWN.

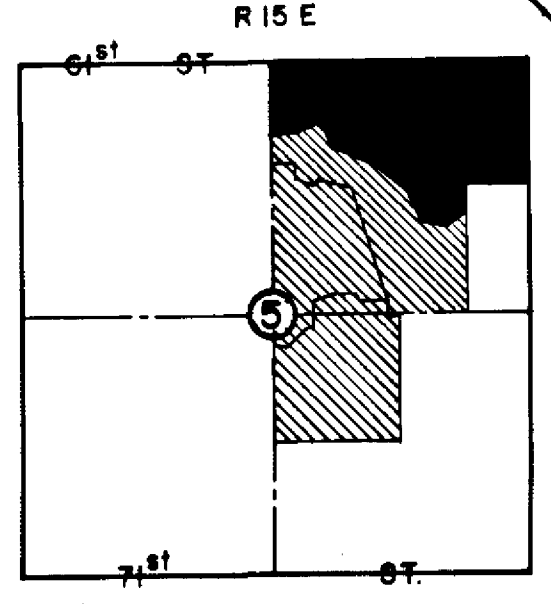
Frank P. Pierce
 FRANK P. PIERCE
 REGISTERED PROFESSIONAL ENGINEER
 REGISTERED LAND SURVEYOR



STATE OF OKLAHOMA
 COUNTY OF OKLAHOMA SS
 BEFORE ME, THE UNDERSIGNED, A NOTARY PUBLIC IN AND FOR SAID COUNTY AND STATE ON THIS 31st DAY OF AUG., 1973 PERSONALLY APPEARED FRANK P. PIERCE, TO ME KNOWN TO BE THE IDENTICAL PERSON WHO EXECUTED THE WITHIN AND FOREGOING INSTRUMENT AND ACKNOWLEDGED TO ME THAT HE EXECUTED THE SAME AS HIS FREE AND VOLUNTARY ACT AND DEED FOR THE USES AND PURPOSES THEREIN SET FORTH.

WITNESS MY HAND AND SEAL THE DAY AND YEAR LAST ABOVE WRITTEN.
 MY COMMISSION EXPIRES: 5-15-77

Susan B. Leggett
 NOTARY PUBLIC



LEGAL DESCRIPTION
 Being a part of the E 1/2 of Sec. 5, T18N, R15E, I.M., Wagoner County, Oklahoma and being more particularly described as follows: Beginning at the NE corner of said Sec. 5; Thence S 0° 09' 22" E, a distance of 1330.20 to the SE corner of the NE 1/4 of the NE 1/4 of said Sec. 5; Thence N 89° 51' 38" W along the South line of said NE 1/4, NE 1/4, Sec. 5, a distance of 660.44' to the SW corner of the E 1/2 of the NE 1/4, NE 1/4, said Sec. 5; Thence S 0° 08' 47" E along the East line of the W 1/2 of the SE 1/4 of the NE 1/4 of said Sec. 5, a distance of 246.00' to a point; Thence S 38° 56' 11" W, a distance of 142.25' to a point; Thence S 67° 35' 02" W, a distance of 86.54' to a point; Thence N 79° 59' 31" W, a distance of 207.15' to a point; Thence N 32° 06' 57" W, a distance of 315.08' to a point; Thence N 44° 51' 33" W, a distance of 472.79' to a point; Thence N 66° 07' 08" W, a distance of 516.91' to a point; Thence N 44° 51' 33" W, a distance of 472.79' to a point; Thence N 66° 07' 08" W, a distance of 516.91' to a point; Thence N 37° 42' 17" W, a distance of 60.00' to a point; Thence N 21° 57' 08" W, a distance of 218.00' to a point; Thence S 47° 01' 06" W, a distance of 205.25' to a point; Thence S 86° 30' 34" W, a distance of 368.35' to a point on the West line of the NE 1/4 of said Sec. 5; Thence N 0° 07' 02" W and along said West line NE 1/4, a distance of 783.00' to the NW corner of said NE 1/4, Sec. 5; Thence N 89° 59' 08" E and along the North line of said NE 1/4, Sec. 5, a distance of 2640.85' to the POINT OR PLACE OF BEGINNING.

Said described tract contains 71.57 ± acres and is subject to any easements or rights-of-way of record.

MAPCO
 ENGINEERING CORPORATION
 5400 S. Shields Blvd. Ph. 632-7761
 OKLAHOMA CITY, OKLA. 73129

I, Frank P. Pierce, do hereby certify that I was duly sworn to the above and paid on the same description - (1973 in 6 months) Feb. 1973
Frank P. Pierce
Wagoner Co. Clerk