

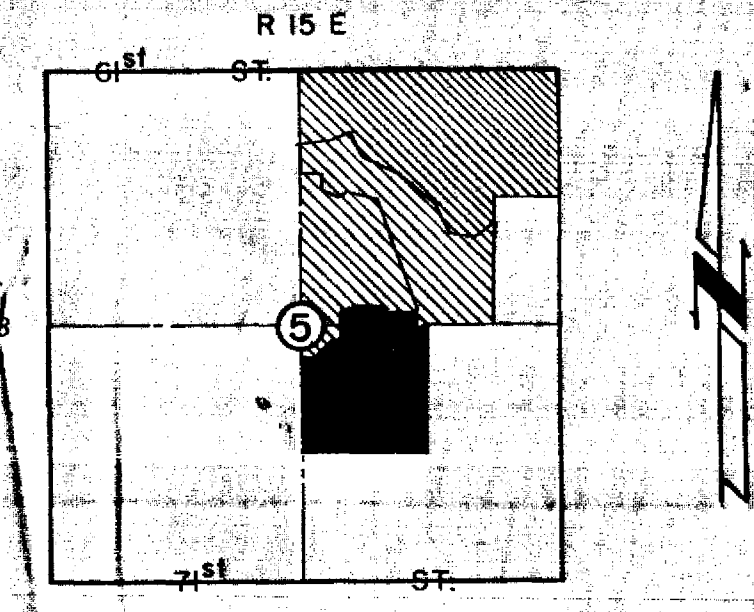
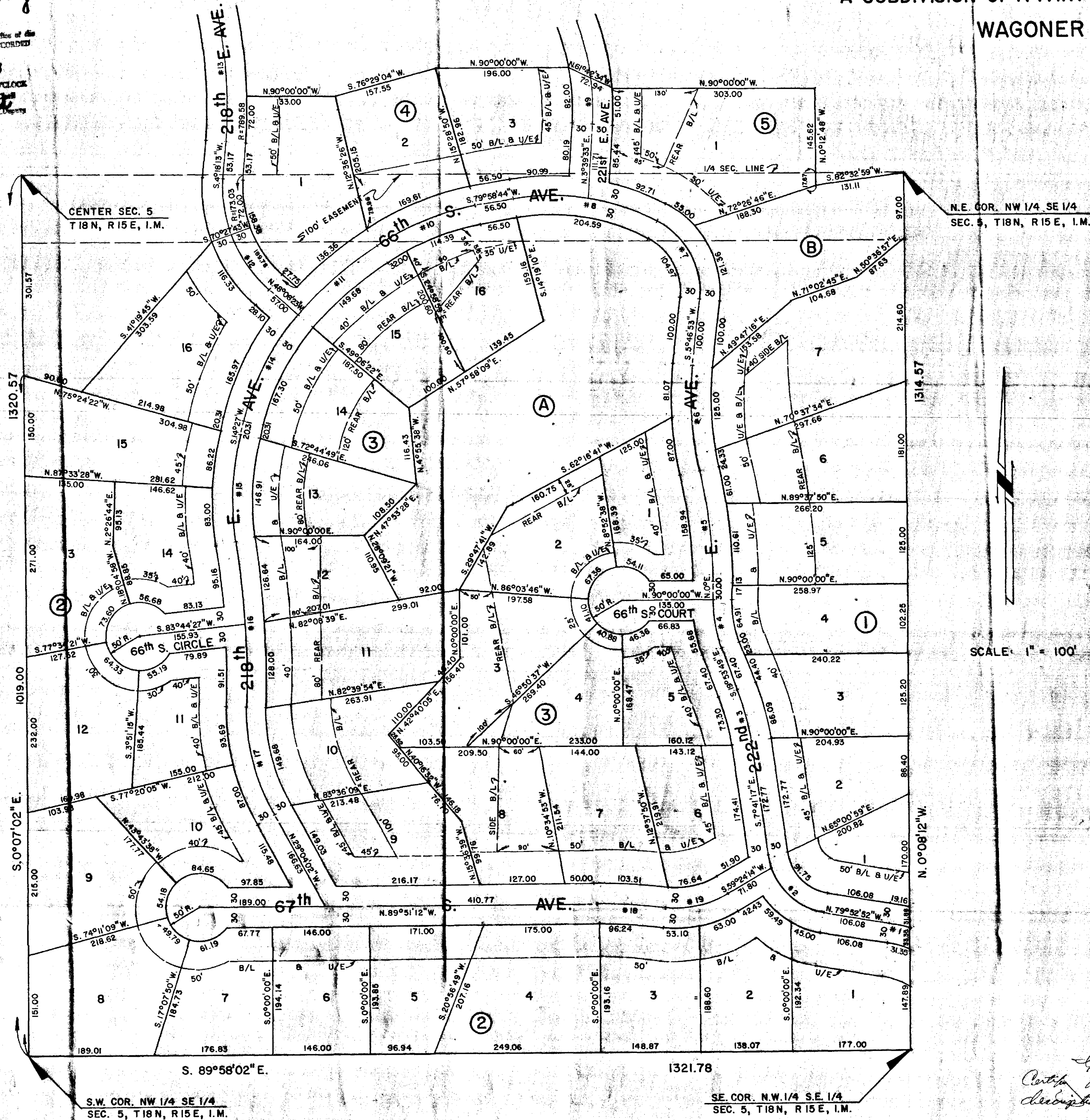
TIMBERBROOK

ALL OF BLOCK 1; BLOCK 2, LOTS 1-16; ALL OF BLOCK 3; BLOCK 4, LOTS 1-3
BLOCK 5, LOT 1; BLOCK A & BLOCK B

A SUBDIVISION OF A PART OF THE E 1/2 SEC. 5, T18N, R15E, I.M.
WAGONER COUNTY, OKLAHOMA

CURVE NO.	Δ	R	T	L
1	79°40'36"	119.86	100.00	24.96
2	72°11'35"	102.86	75.00	129.61
3	12°12'32"	374.01	40.00	79.70
4	19°53'49"	216.93	38.05	75.33
5	12°06'43"	781.87	82.95	165.28
6	17°53'36"	508.16	80.00	158.70
7	68°10'20"	118.22	80.00	140.66
8	37°37'49"	341.51	116.36	224.29
9	23°30'00"	384.61	80.00	157.75
10	22°10'29"	408.24	80.00	158.00
11	15°56'38"	567.90	79.53	158.03
12	52°26'36"	203.03	100.00	185.84
13	15°00'00"	759.58	100.00	198.86
14	27°24'37"	379.71	92.60	181.65
15	21°26'12"	422.65	80.00	158.15
16	7°3'56"	1907.00	125.53	250.70
17	29°36'46"	319.60	84.48	165.18
18	6°56'23"	824.61	50.00	99.88
19	37°40'57"	146.53	50.00	96.37

Plot Book to Page 21
 STATE OF OKLAHOMA
 COUNTY OF WAGONER
 Filed for Record in this Office of the
 COUNTY CLERK AND RECORDED
 SEP 28 1973
 2:30 PM
 JACK C. JORDAN, County Clerk
 by *Maria Boyd*



LOCATION MAP
SCALE: 1" = 2000'

LEGAL DESCRIPTION

Being a part of the E 1/2 of Sec. 5, T18N, R15E, I.M., Wagoner County, Oklahoma, being more particularly described as follows:
 BEGINNING: at the SW Corner of the NW 1/4 of said Sec. 5,
 THENCE: S 89°58'02" E along the South line of said NW 1/4, SE 1/4, Sec. 5, a distance of 1321.78' to the SE corner of said NW 1/4, SE 1/4, Sec. 5,
 THENCE: N 0°08'12" W along the East line of said NW 1/4, SE 1/4, Sec. 5, a distance of 1314.57' to the NE corner of said NW 1/4, SE 1/4, Sec. 5,
 THENCE: S 82°32'59" W, a distance of 131.11' to a point,
 THENCE: N 0°12'48" W, a distance of 145.62' to a point,
 THENCE: N 90°00'00" W, a distance of 303.00' to a point,
 THENCE: N 61°42'34" W, a distance of 72.94' to a point,
 THENCE: N 90°00'00" W, a distance of 196.00' to a point,
 THENCE: S 76°29'04" W, a distance of 157.55' to a point,
 THENCE: N 90°00'00" W, a distance of 133.00' to a point,
 THENCE: In a southerly direction along a curve to the right whose tangent bears S 0°55'16" E and having a radius of 789.58' for a distance of 72.00' to a point of tangency,
 THENCE: S 4°18'13" W, a distance of 53.17' to a point of curve,
 THENCE: Along said curve to the left, having a radius of 173.03' for a length of 72.00' to a point,
 THENCE: S 70°27'43" W, a distance of 60' to a point,
 THENCE: S 41°19'45" W, a distance of 303.59' to a point,
 THENCE: N 75°24'22" W, a distance of 90.00' to a point on the West line of the E 1/2 of said Sec. 5,
 THENCE: S 0°07'02" E and along said West line of the E 1/2 of said Sec. 5, a distance of 1019.00' TO THE POINT OR PLACE OF BEGINNING.

Said described tract contains 40.95 acres ± and is subject to any easements and rights-of-way of record.

SCALE: 1" = 100'

SURVEYOR'S CERTIFICATE

I, FRANK P. PIERCE, A REGISTERED PROFESSIONAL ENGINEER AND REGISTERED LAND SURVEYOR, DO HEREBY CERTIFY THAT THE ANNEXED MAP OR PLAT OF TIMBERBROOK, A SUBDIVISION OF A PART OF THE E 1/2, SEC. 5, T18N, R15E, I.M., WAGONER COUNTY, OKLAHOMA CORRECTLY REPRESENTS AN ACCURATE SURVEY THEREOF MADE UNDER MY SUPERVISION AND THAT THE MONUMENTS SHOWN THEREON ACTUALLY EXIST AND THEIR POSITIONS ARE CORRECTLY SHOWN.

Frank P. Pierce
 FRANK P. PIERCE
 REGISTERED PROFESSIONAL ENGINEER
 REGISTERED LAND SURVEYOR

STATE OF OKLAHOMA SS
 COUNTY OF OKLAHOMA SS
 BEFORE ME, THE UNDERSIGNED, A NOTARY PUBLIC IN AND FOR SAID COUNTY AND STATE ON THIS 9th DAY OF JULY, 1973, PERSONALLY APPEARED FRANK P. PIERCE, TO ME KNOWN TO BE THE IDENTICAL PERSON WHO EXECUTED THE WITHIN AND FOREGOING INSTRUMENT AND ACKNOWLEDGED TO ME THAT HE EXECUTED THE SAME AS HIS FREE AND VOLUNTARY ACT AND DEED FOR THE USES AND PURPOSES THEREIN SET FORTH.

WITNESS MY HAND AND SEAL THE DAY AND YEAR LAST ABOVE WRITTEN.
 MY COMMISSION EXPIRES: 6-4-77

Samuel D. Partufale
 NOTARY PUBLIC
 IN AND FOR
 STATE OF
 OKLAHOMA

NOTE:
 1. REAR B/L'S ARE MEASURED FROM STREET P/L.
 2. FINISHED FLOOR ELEVATIONS ARE TO BE 1' ABOVE THE 100 YEAR FLOOD.

I, Queen M. Roberts, Wagoner County Treasurer, certify that this map has been filed in the office of the County Clerk - (1973 to present) 9-28-73

Queen M. Roberts
 Wagoner Co. Treas.

MAPCO
 ENGINEERING CORPORATION
 5400 S. Shields Blvd. Ph. 632-7761
 OKLAHOMA CITY, OKLA. 73129