

ACCEPTANCE OF DEDICATION OF BOARD OF COMMISSIONERS

Be it resolved by the Board of Commissioners of Wagoner County, Oklahoma, that the dedication shown on the attached Plat is hereby accepted

Adopted by the Board of Commissioners of Wagoner County, Oklahoma, this 26 day of Feb, 2007.

Attest:
 Carolyn M. Kusler
 County Clerk

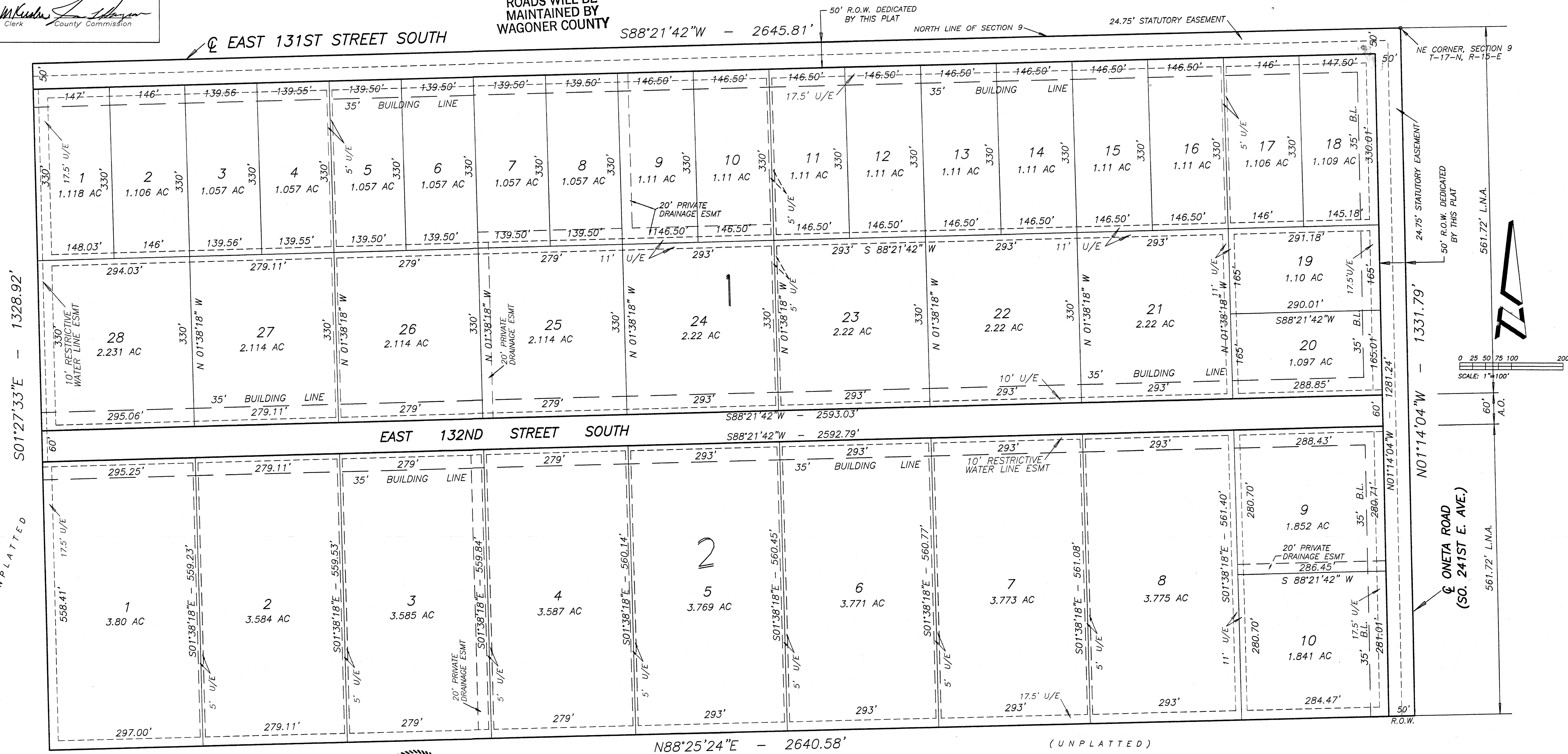
ENGINEER/SURVEYOR:
 HOWARD CONSULTING
 9920 W. 128th ST. SO.
 OKTAHA, OKLAHOMA 74450
 918-686-0564
 C.A. NO.: 3545
 EXP. DATE: 6/30/07

FINAL PLAT
SUNDANCE FARMS
 AN ADDITION IN WAGONER COUNTY, OKLAHOMA
 A SUBDIVISION IN THE N 1/2 OF THE NE 1/4 OF SECTION 9, T-17-N, R-15-E OF THE 1B & M.

OWNER:
 STORYBOOK HOMES, INC.
 21284 EAST 61ST STREET SOUTH
 BROKEN ARROW, OK 74014
 PHONE: 918-355-6355
 FAX: 918-355-5121
 CONTACT: GERALD SNOW

FINAL PLAT
 CERTIFICATE OF APPROVAL
 I hereby certify that this plat was approved by the Wagoner County Planning Commission on:

ROADS WILL BE MAINTAINED BY WAGONER COUNTY

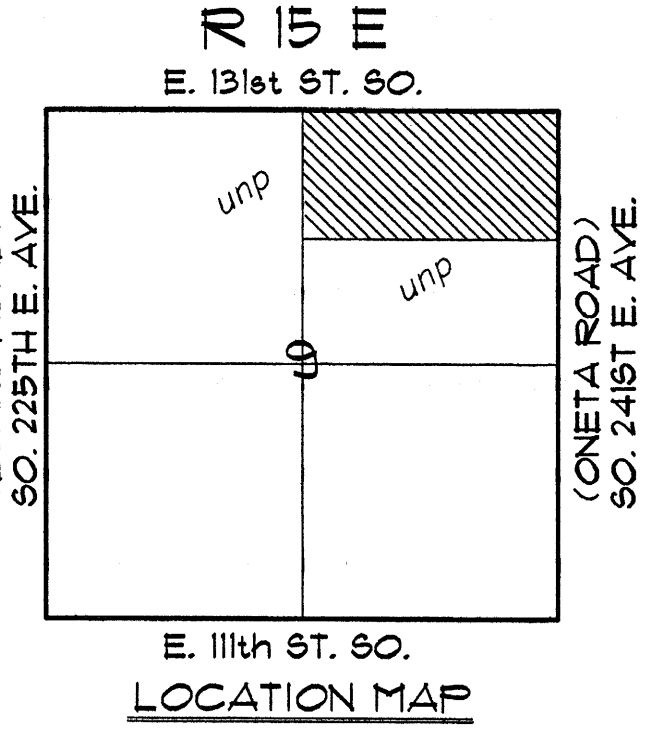


STATE OF OKLAHOMA } SS
 COUNTY OF Wagoner }
 I, Carolyn Kusler, Wagoner County Clerk, in and for the County and State of Oklahoma above named, do hereby certify that the foregoing is a true and correct copy of a like instrument now on file in my office.
 Dated the 26 day of Feb, 2007
 Carolyn Kusler, Wagoner County Clerk
 Deputy

STATE OF OKLAHOMA } SS
 COUNTY OF Wagoner }
 I, Gloria Marshall, do hereby certify that I am the duly elected, qualified and acting County Treasurer of Wagoner County, State of Oklahoma. That the tax records of said county show all taxes are paid for the year and prior years on the land shown on the plat of "Sundance Farms", in Wagoner County Oklahoma; that the required statutory security has been deposited in the office of the County Treasurer, guaranteeing payment of the current year's taxes.
 Dated the 22 day of Feb, 2007
 Gloria Marshall
 Wagoner County Treasurer



DEPARTMENT OF ENVIRONMENTAL QUALITY CERTIFICATE
 The Tulsa Office of the Department of Environmental Quality APPROVED
 has approved this plat of "Sundance Farms", for the use of individual water systems and On-site sewer systems on the 20 lots, 80 acres, 2007.
 Environmental Program Specialist
 Department of Environmental Quality
 PLANNING COMMISSION
 I, Gerald Snow, Chairman/Secretary of the Wagoner County Planning Commission, Wagoner County, State of Oklahoma, hereby certify that the said commission duly approved that plat of "Sundance Farms" on the 26 day of Feb, 2007.
 Gerald Snow
 Chairman/Secretary



LEGEND

BL.	BUILDING LINE
CL.	CENTER LINE
U/E	UTILITY EASEMENT
A.O.	ACCESS OPENING
L.N.A.	LIMITS OF NO ACCESS
R.O.W.	DEDICATED ROAD RIGHT-OF-WAY

SUBDIVISION CONTAINS
 30 LOTS
 80 ACRES
 December 30, 2006
 C:\SNOW\SUNDANCE.DWG

THE BASIS OF BEARINGS FOR THE SURVEY SHOWN THEREON IS THE NORTH LINE OF SAID SECTION 9, S88°21'42"W
 This plat meets the Oklahoma minimum standards for the practice of Land Surveying as adopted by the Oklahoma State Board of Registration for Professional Engineers and Surveyors.

SUNDANCE FARMS
 December 30, 2006
 SHEET 1 OF 2

Certified True Copy
 CAROLYN KUSLER, COUNTY CLERK
 Wagoner County, Okla.
 By: [Signature]
 DEPUTY