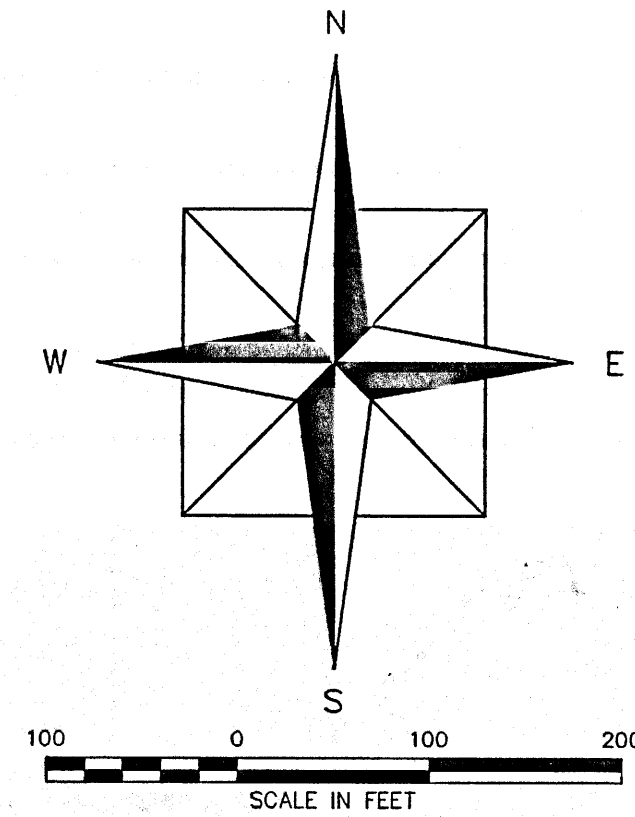


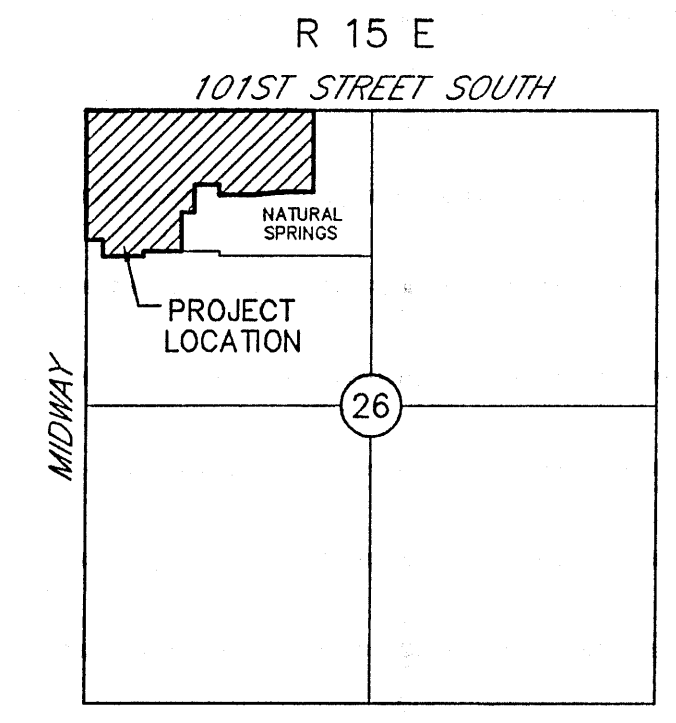
FINAL PLAT STONE HORSE FARMS

AN ADDITION TO THE COUNTY OF WAGONER, OKLAHOMA
A PART OF THE NW/4 OF SECTION 26, TOWNSHIP 18 NORTH,
RANGE 15 EAST, WAGONER COUNTY, OKLAHOMA

OWNER
MEADOW HOMES LAND OF OKLAHOMA, INC.
8128 E. 63RD ST., SUITE B
TULSA, OKLAHOMA 74133
PHONE: (918) 294-3628



ENGINEER
TUTTLE & ASSOCIATES, INC.
9718 E. 55TH PL.
TULSA, OKLAHOMA 74146
PHONE: (918) 663-5567
CERTIFICATE OF AUTHORITY CA 465
EXPIRATION 6-30-07



LOCATION MAP
1,987,978.63 SQUARE FEET
45.64 ACRES
57 LOTS

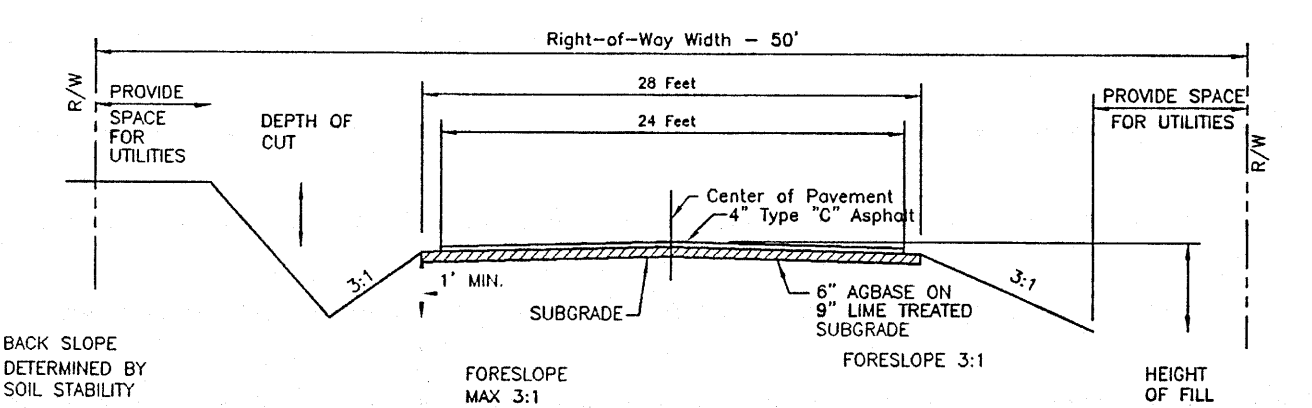
CURVE	RADIUS	DELTA	ARC	TANGENT	BEARING	CHORD
C1	30.00	89.420°	46.80	29.83	N 45.937° W	42.30
C2	30.00	89.750°	47.50	30.17	E 45.937° W	42.30
C3	350.00	68.121°	37.91	18.97	S 88.531° W	37.89
C4	350.00	134.471°	84.27	42.34	N 78.578° E	84.09
C5	25.00	82.490°	36.14	23.00	S 25.174° W	33.07
C6	25.00	83.474°	36.58	22.43	N 48.062° W	33.39
C7	250.00	68.121°	27.08	13.55	N 63.060° W	27.06
C8	175.00	45.000°	157.44	72.49	N 22.300° W	153.84
C9	150.00	45.000°	117.81	62.13	N 37.500° W	114.81
C10	100.00	32.533°	57.39	28.51	S 16.263° W	56.81
C11	25.00	81.000°	35.41	21.41	S 72.273° W	32.92
C12	275.00	32.533°	157.87	81.18	S 23.529° E	158.87
C13	25.00	81.000°	35.41	21.41	S 07.412° E	32.92
C14	275.00	64.291°	309.51	173.47	N 24.522° E	293.43
C15	25.00	81.000°	35.41	21.41	N 42.031° W	32.92
C16	250.00	27.213°	162.30	82.27	S 83.417° W	163.81
C17	25.00	81.000°	35.41	21.41	S 50.474° W	32.92
C18	275.00	34.309°	165.67	85.40	N 24.371° E	163.11
C19	200.00	41.521°	146.16	76.32	N 23.381° E	142.83
C20	25.00	90.000°	39.27	25.00	E 45.000° W	35.36
C21	25.00	90.000°	39.27	25.00	N 45.000° W	35.36
C22	25.00	90.000°	39.27	25.00	S 45.000° W	35.36
C23	25.00	90.000°	39.27	25.00	E 45.000° W	35.36
C24	200.00	25.000°	87.29	44.35	S 77.246° W	86.60
C25	200.00	25.000°	87.29	44.35	S 77.246° W	86.60
C26	25.00	45.123°	21.63	11.18	S 65.541° W	20.41
C27	60.00	57.922°	24.10	14.72	NORTH	44.47
C28	25.00	48.113°	21.03	11.18	N 65.541° W	20.41
C29	30.00	90.000°	47.12	30.00	N 45.000° W	42.43
C30	30.00	90.000°	47.12	30.00	E 45.000° W	42.43
C31	175.00	29.191°	89.55	45.78	S 70.202° E	88.58
C32	25.00	90.000°	39.27	25.00	N 15.404° W	35.36
C33	25.00	91.010°	40.18	25.81	N 28.804° E	35.98
C34	225.00	29.191°	140.13	71.87	N 43.387° E	138.90
C35	30.00	90.000°	47.12	30.00	N 45.000° W	42.43
C36	30.00	90.000°	47.12	30.00	N 45.000° W	42.43
C37	25.00	90.000°	39.27	25.00	S 19.448° E	35.36
C38	25.00	90.000°	39.27	25.00	S 74.912° E	35.36
C39	250.00	29.191°	127.83	65.40	S 14.393° W	126.54
C40	175.00	29.191°	89.55	45.78	S 70.202° E	88.58
C41	25.00	84.939°	36.77	22.61	S 75.211° W	33.54
C42	25.00	89.303°	43.46	28.58	S 40.171° E	38.19
C43	200.00	29.191°	102.39	52.32	N 14.393° E	101.23
C44	75.00	62.048°	79.43	43.80	N 59.397° E	78.77
C45	50.00	89.463°	78.34	48.80	N 74.122° E	70.57
C47	50.00	209.043°	182.47	192.88	N 14.325° E	86.79
C48	200.00	21.271°	111.89	56.67	S 79.185° W	111.24
C49	200.00	21.271°	111.89	56.67	S 79.185° W	111.24
C50	25.00	30.512°	16.09	8.33	S 71.335° E	15.81
C51	50.00	163.423°	142.89	350.00	N 45.000° W	88.99
C52	18.00	18.000°	18.00	18.00	N 18.000° E	18.00
C53	25.00	90.000°	39.27	25.00	N 45.000° W	35.36

NW CORNER
SEC 26, T18N, R15E
P.O.B.

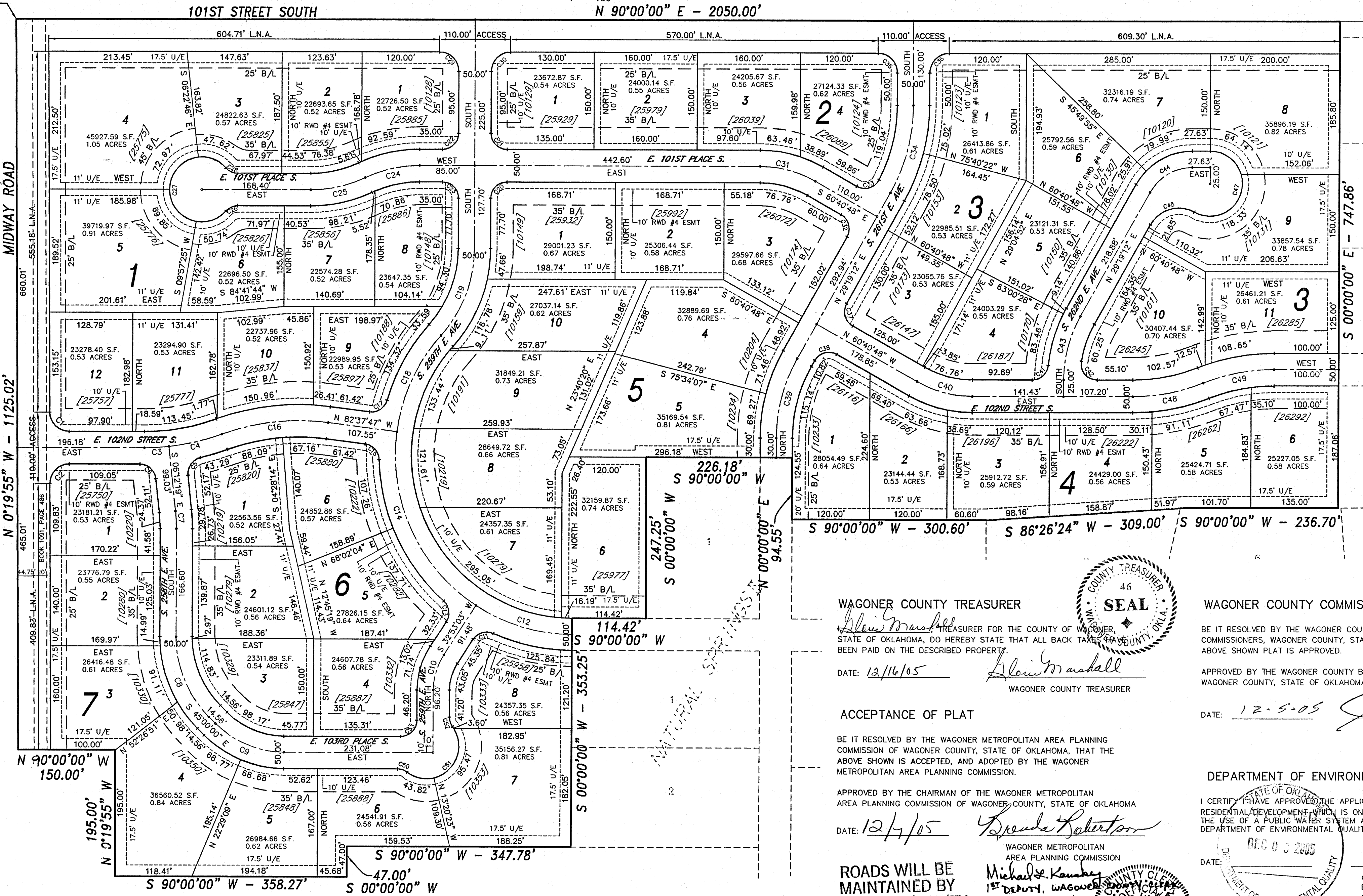
LEGAL DESCRIPTION
STONE HORSE FARMS

BEGINNING at the NW corner of Section 26, T-18-N, R-15-E, Wagoner County, Oklahoma
THENCE East along the North line of said Section 26, a distance of 2050.00 feet to the Northwest corner of Natural Springs addition to Wagoner County, Oklahoma;
THENCE South along the West boundary of said Natural Springs II, a distance of 747.86 feet to a point;
THENCE South 86 degrees 26 minutes 24 seconds West along the North boundary of said Natural Springs II, a distance of 236.70 feet to a point;
THENCE South 86 degrees 26 minutes 24 seconds West along the North boundary of said Natural Springs II, a distance of 300.00 feet to a point;
THENCE West along the North boundary of said Natural Springs II, a distance of 300.60 feet to a point;
THENCE North along the East boundary of said Natural Springs II, a distance of 94.55 feet to a point;
THENCE West along the North boundary of said Natural Springs II, a distance of 226.18 feet to a point;
THENCE South along the West boundary of said Natural Springs II, a distance of 247.25 feet to a point;
THENCE West along the North boundary of said Natural Springs II, a distance of 114.42 feet to a point;
THENCE South along the West boundary of said Natural Springs II, a distance of 353.25 feet to a point;
THENCE West a distance of 347.78 feet to a point;
THENCE South a distance of 47.00 feet to a point on the South line of NW/4 of said Section 26;
THENCE West along the South line of NW/4 a distance of 358.27 feet to a point;
THENCE N 00°19'55" W a distance of 195.00 feet to a point;
THENCE West a distance of 150.00 feet to a point on the West section line of said Section 26;
THENCE N 00°19'55" W along the West section line of said Section 26 a distance of 1125.02 feet to the PLACE OF BEGINNING containing 1,987,978.63 square feet or 45.64 acres.

- NOTES:**
1. ADDRESS SHOWN ON THIS PLAT WERE ACCURATE AT THE TIME THIS PLAT WAS FILED; ADDRESS ARE SUBJECT TO CHANGE AND SHOULD NEVER BE RELIED ON IN PLACE OF LEGAL DESCRIPTIONS.
 2. BASIS FOR BEARINGS IS NORTH LINE OF SECTION ASSUMED EAST.
 3. THIS PLAT MEETS THE OKLAHOMA MINIMUM STANDARD FOR THE PRACTICE OF LAND SURVEYING AS ADOPTED BY THE OKLAHOMA STATE BOARD OF REGISTRATION FOR PROFESSIONAL ENGINEERS AND LAND SURVEYORS.



- LEGEND**
- N NORTH
 - S SOUTH
 - E EAST
 - W WEST
 - B.L. BUILDING LINE
 - U/E UTILITY EASEMENT
 - L.N.A. LIMITS OF NO ACCESS
 - (19619) ADDRESSES
 - RWD #4 WAGONER COUNTY RURAL WATER #4
 - ESMT RESTRICTED WATER EASEMENT



WAGONER COUNTY TREASURER
Alvin Marshall
DATE: 12/16/05
WAGONER COUNTY TREASURER

WAGONER COUNTY COMMISSION
BE IT RESOLVED BY THE WAGONER COUNTY BOARD OF COUNTY COMMISSIONERS, WAGONER COUNTY, STATE OF OKLAHOMA, THAT THE ABOVE SHOWN PLAT IS APPROVED.
APPROVED BY THE WAGONER COUNTY BOARD OF COMMISSIONERS
WAGONER COUNTY, STATE OF OKLAHOMA
DATE: 12-5-05
Chairman
CHAIRMAN, WAGONER COUNTY BOARD OF COUNTY COMMISSIONERS

ACCEPTANCE OF PLAT
BE IT RESOLVED BY THE WAGONER METROPOLITAN AREA PLANNING COMMISSION OF WAGONER COUNTY, STATE OF OKLAHOMA, THAT THE ABOVE SHOWN IS ACCEPTED, AND ADOPTED BY THE WAGONER METROPOLITAN AREA PLANNING COMMISSION.
APPROVED BY THE CHAIRMAN OF THE WAGONER METROPOLITAN AREA PLANNING COMMISSION OF WAGONER COUNTY, STATE OF OKLAHOMA
DATE: 12/1/05
Debra Robertson
WAGONER METROPOLITAN AREA PLANNING COMMISSION

ROADS WILL BE MAINTAINED BY WAGONER COUNTY
Michael DeKam
1ST DEPUTY, WAGONER COUNTY CLERK
FOR: CAROLYN KUSLER, 12/16/05

DEPARTMENT OF ENVIRONMENTAL QUALITY
I CERTIFY I HAVE APPROVED THE APPLICATION AND PLAN FOR A PLAT OF A RESIDENTIAL DEVELOPMENT WHICH IS ON FILE AT THE WAGONER OFFICE OF THE USE OF A PUBLIC WATER SYSTEM AND A PUBLIC SEWER SYSTEM, DEPARTMENT OF ENVIRONMENTAL QUALITY, AND HEREBY APPROVE THIS PLAT FOR
DATE: 12/16/05
Chad Keller
CHAD KELLER
ENVIRONMENTAL SPECIALIST SUPERVISOR
OKLAHOMA DEPARTMENT OF ENVIRONMENTAL QUALITY

Certified True Copy
CAROLYN KUSLER, COUNTY CLERK
Wagoner County, Okla.
Barbara Robertson