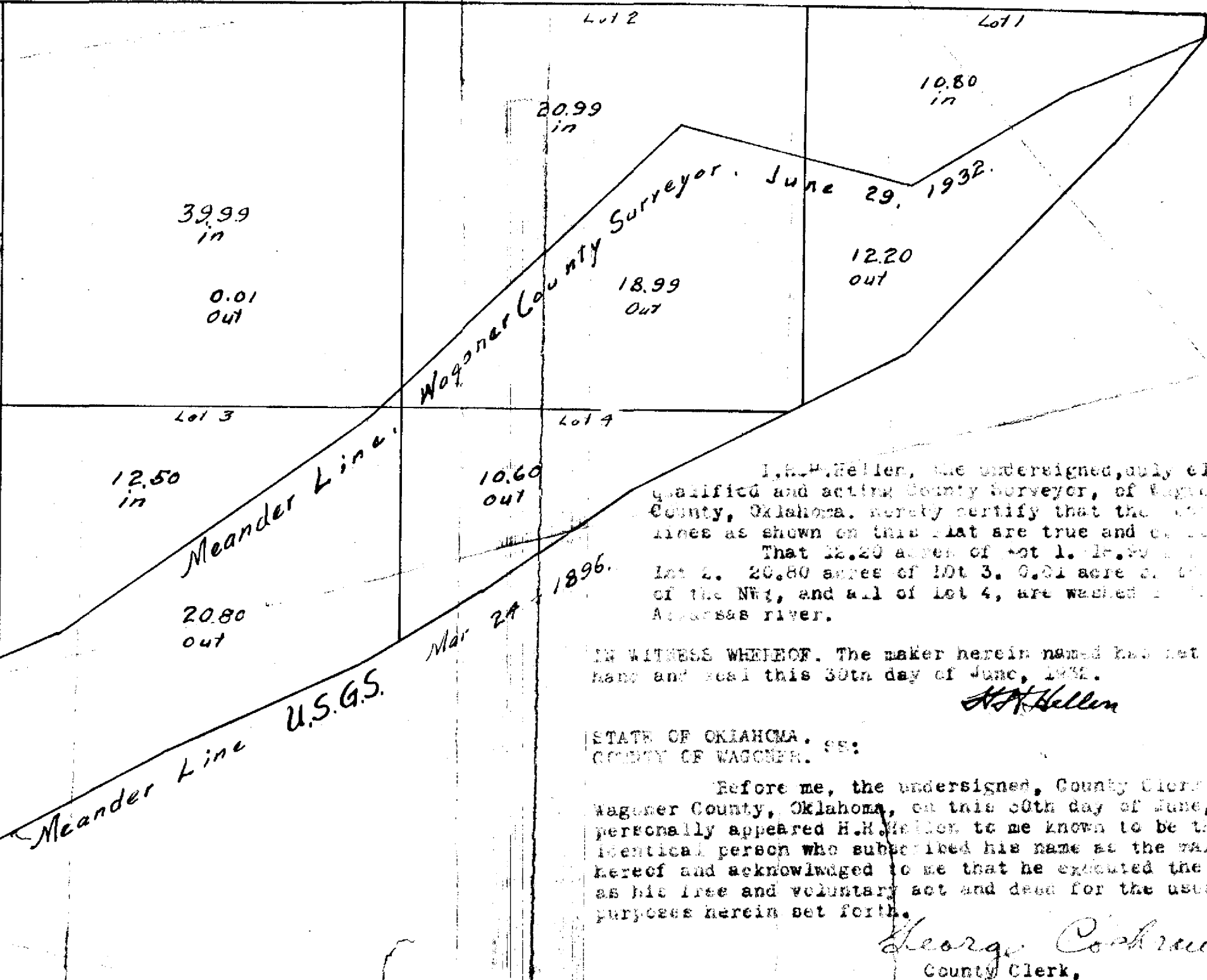


PLAT
 of
 That part of Section 8
 T15N-R17E. in
 Wagoner County, Okla.

Showing amount of
 Land washed away
 by the Arkansas river
 of Lots 1-234 @ NE of NW.

Showing U.S.G.S. and
 present Meander lines,
 of part of Section 8.
 T15N-R17E.
 Wagoner County, Oklahoma.

Total washed in River 62.60
 Lot 7



Wagoner County Surveyor, June 29, 1932.

I, H.H. Hellen, the undersigned, duly elected,
 qualified and acting County Surveyor, of Wagoner
 County, Oklahoma, hereby certify that the meander
 lines as shown on this plat are true and correct.
 That 12.20 acres of Lot 1, 18.99 acres of
 Lot 2, 20.80 acres of Lot 3, 0.01 acre of the NW 1/4
 of the NW 1/4, and all of Lot 4, are washed away by the
 Arkansas river.

IN WITNESS WHEREOF, The maker herein named has set his
 hand and seal this 30th day of June, 1932.

H.H. Hellen

STATE OF OKLAHOMA, SS:
 COUNTY OF WAGONER, SS:

Before me, the undersigned, County Clerk of
 Wagoner County, Oklahoma, on this 30th day of June, 1932,
 personally appeared H.H. Hellen to me known to be the
 identical person who subscribed his name as the maker
 hereof and acknowledged to me that he executed the same
 as his free and voluntary act and deed for the uses and
 purposes herein set forth.

George Cochran
 County Clerk,
 Wagoner County, Oklahoma.

Scale 1" = 400'

H.H. Hellen, June 29-30, 1932