

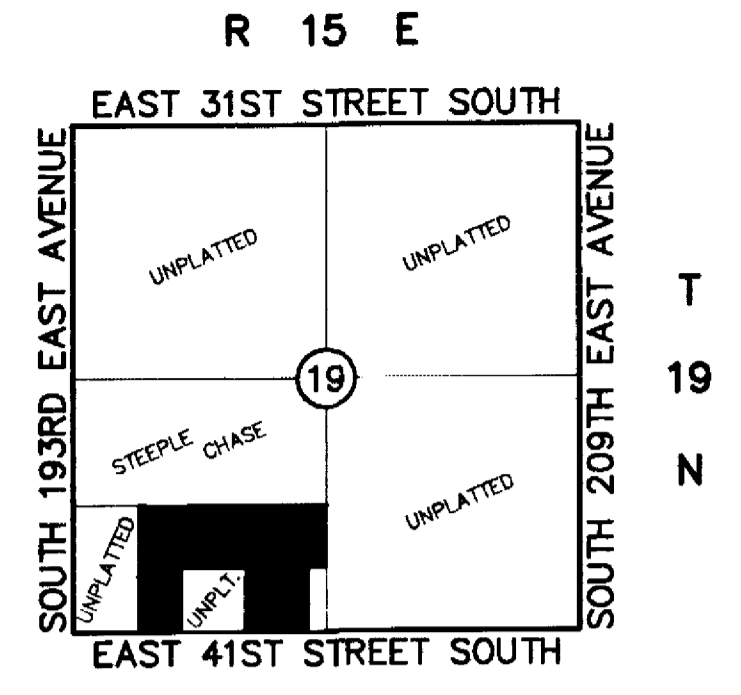
Steeplechase Farms

A PART OF THE S/2 OF THE SW/4 OF SECTION 19, TOWNSHIP 19 NORTH, RANGE 15 EAST
 A SUBDIVISION IN WAGONER COUNTY, OKLAHOMA

OWNER:
Select Homesites, Inc.
 9714 East 55th Place
 Tulsa, Oklahoma 74146
 Phone: (918) 663-6540

ENGINEER/SURVEYOR:
Sisemore Hall & Weisz, Inc.
 11002 East 51st Street, Suite A
 Tulsa, Oklahoma 74146
 Phone: (918) 663-7770

Certificate of Authorization #2421
 Expires June 30, 1997

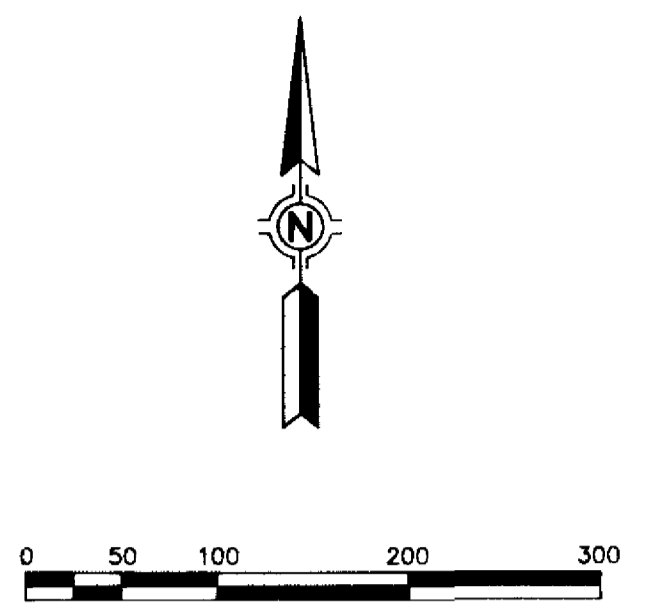


Location Map
 SCALE: 1"=2000'

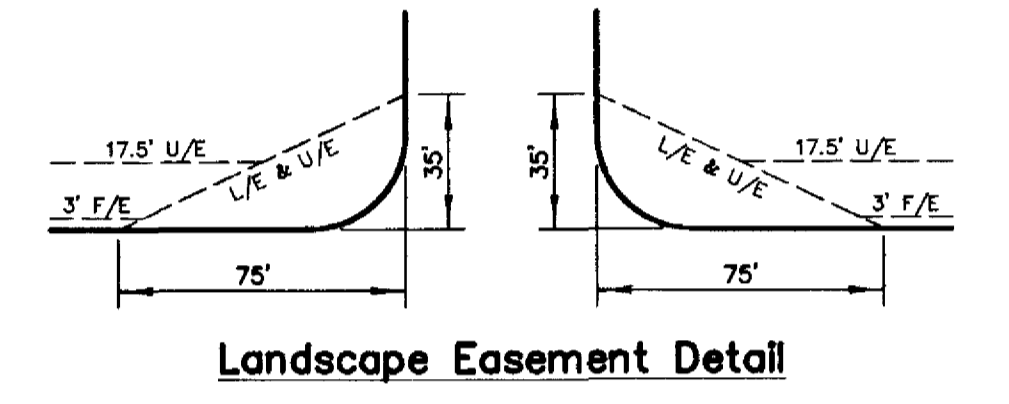
SUBDIVISION CONTAINS
 ONE HUNDRED SEVENTY-FOUR (174) LOTS
 IN SEVEN (7) BLOCKS
 BLOCK 1 CONTAINS 7.00 ACRES
 BLOCK 2 CONTAINS 0.93 ACRES
 BLOCK 3 CONTAINS 1.56 ACRES
 BLOCK 4 CONTAINS 7.02 ACRES
 BLOCK 5 CONTAINS 9.72 ACRES
 BLOCK 6 CONTAINS 3.80 ACRES
 BLOCK 7 CONTAINS 6.71 ACRES

Benchmark
 NORTHWEST RING BOLT ON FIRE HYDRANT
 LOCATED ON THE SOUTHWEST CORNER OF
 E. 37TH STREET S. AND S. 197TH E. AVE.
 ELEV. = 683.30 (USGS)

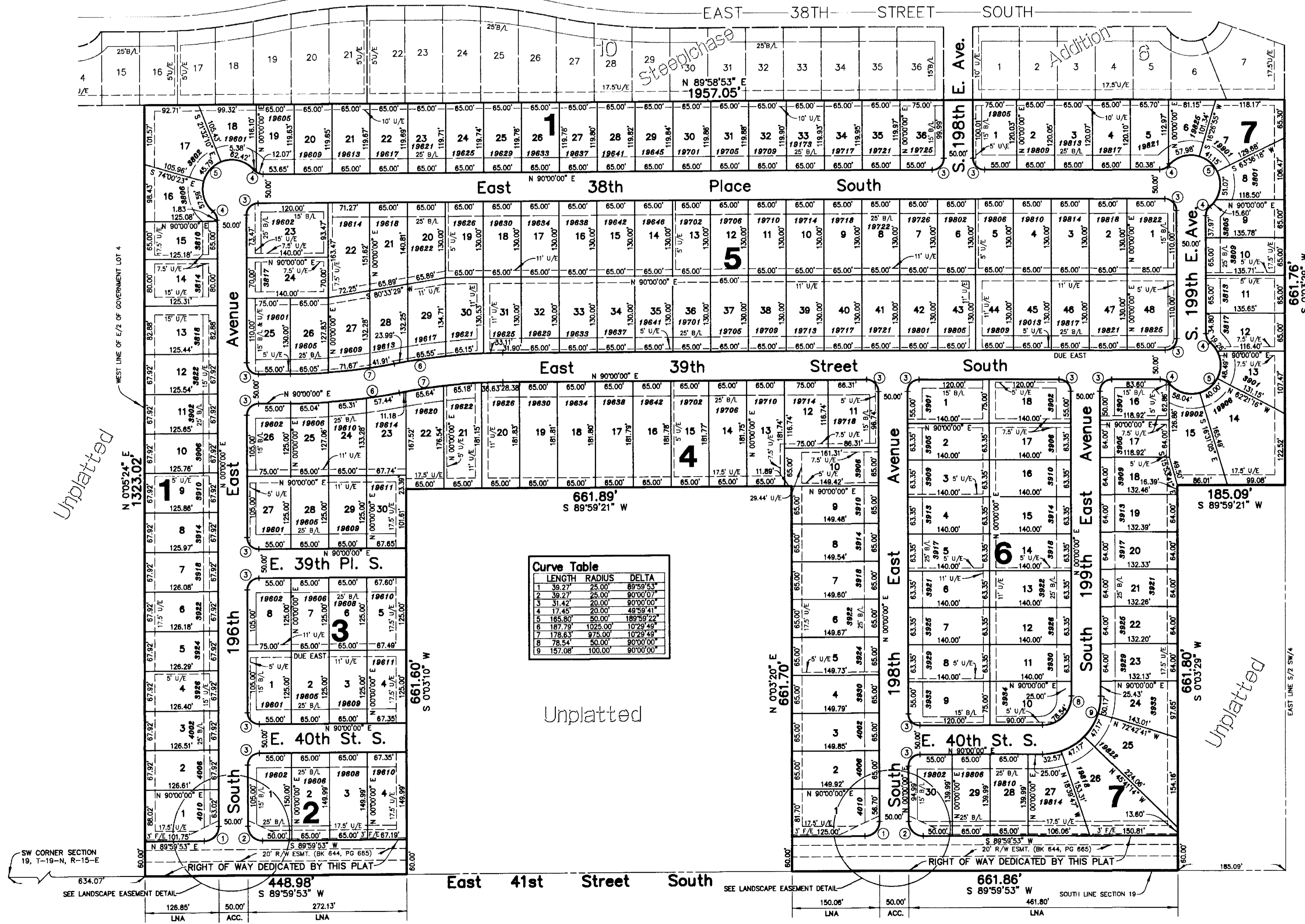
Basis of Bearings
 SOUTH LINE OF STEEPLECHASE AND SOUTH
 LINE OF SECTION 19, T-19-N, R-15-E



Legend
 ACC = ACCESS PERMITTED
 LNA = LIMITS OF NO ACCESS
 U/E = UTILITY EASEMENT
 B/L = BUILDING LINE
 F/E = FENCE EASEMENT
 L/E = LANDSCAPE EASEMENT
 (C) = CURVE # IDENTIFIED IN CURVE TABLE
 19901 = ADDRESS



Landscape Easement Detail



Curve Table

LENGTH	RADIUS	DELTA
1	38.27'	25.00'
2	38.27'	25.00'
3	31.42'	20.00'
4	17.45'	20.00'
5	165.80'	30.00'
6	187.79'	102.00'
7	178.63'	97.50'
8	78.54'	50.00'
9	157.08'	100.00'

NOTE:
 ADDRESSES SHOWN ON THIS PLAT WERE PROVIDED BY PUBLIC
 SERVICE COMPANY OF OKLAHOMA. THE ADDRESSES ARE SUBJECT
 TO CHANGE AND SHOULD NOT BE RELIED ON IN PLACE OF THE
 LEGAL DESCRIPTION.