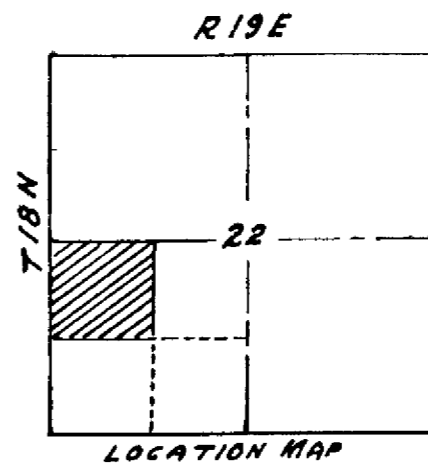


SLY'S SUB-DIVISION

OF

NW. 1/4 SW. 1/4 SECTION 22 T18N-R19E.

WAGONER COUNTY, OKLA.



1322.5'												
100'	100'	100'	100'	100'	100'	100'	100'	100'	100'	100'	100'	122.5'
13	12	11	10	BLOCK 1			6	5	4	3	2	1
100'	"	"	"	9	8	7	"	"	"	"	100'	100'
100'	"	"	"	"	"	"	"	"	"	"	100'	100'
100'	"	"	"	"	"	"	"	"	"	"	100'	100'
13	12	11	10	BLOCK 2			6	5	4	3	2	1
100'	"	"	"	9	8	7	"	"	"	"	100'	100'
100'	"	"	"	"	"	"	"	"	"	"	100'	100'
100'	"	"	"	"	"	"	"	"	"	"	100'	100'
13	12	11	10	9	8	7	6	5	4	3	2	1
100'	"	"	"	"	"	"	"	"	"	"	100'	100'
100'	"	"	"	"	"	"	"	"	"	"	100'	100'
14	15	16	17	18	19	20	21	22	23	24	25	26
100'	"	"	"	"	"	"	"	"	"	"	100'	100'
100'	"	"	"	"	"	"	"	"	"	"	100'	100'
13	12	11	10	9	8	7	6	5	4	3	2	1
100'	"	"	"	"	"	"	"	"	"	"	100'	100'
100'	"	"	"	"	"	"	"	"	"	"	100'	100'
14	15	16	17	18	19	20	21	22	23	24	25	26
100'	"	"	"	"	"	"	"	"	"	"	100'	100'
100'	"	"	"	"	"	"	"	"	"	"	100'	100'
13	12	11	10	9	8	7	6	5	4	3	2	1
100'	"	"	"	"	"	"	"	"	"	"	100'	100'
100'	"	"	"	"	"	"	"	"	"	"	100'	100'
14	15	16	17	18	19	20	21	22	23	24	25	26
100'	"	"	"	"	"	"	"	"	"	"	100'	100'
100'	"	"	"	"	"	"	"	"	"	"	100'	100'
13	12	11	10	9	8	7	6	5	4	3	2	1
100'	"	"	"	"	"	"	"	"	"	"	100'	100'
100'	"	"	"	"	"	"	"	"	"	"	100'	100'
14	15	16	17	18	19	20	21	22	23	24	25	26
100'	"	"	"	"	"	"	"	"	"	"	100'	100'
100'	"	"	"	"	"	"	"	"	"	"	100'	100'
13	12	11	10	BLOCK 5			6	5	4	3	2	1
100'	"	"	"	9	8	7	"	"	"	"	100'	100'
100'	"	"	"	"	"	"	"	"	"	"	100'	100'
100'	"	"	"	"	"	"	"	"	"	"	100'	100'
13	12	11	10	9	8	7	6	5	4	3	2	1
100'	"	"	"	"	"	"	"	"	"	"	100'	100'
100'	"	"	"	"	"	"	"	"	"	"	100'	100'
14	15	16	17	18	19	20	21	22	23	24	25	26
100'	"	"	"	"	"	"	"	"	"	"	100'	100'
100'	"	"	"	"	"	"	"	"	"	"	100'	100'
13	12	11	10	BLOCK 6			6	5	4	3	2	1
100'	"	"	"	9	8	7	"	"	"	"	100'	100'
100'	"	"	"	"	"	"	"	"	"	"	100'	100'
100'	"	"	"	"	"	"	"	"	"	"	100'	100'
13	12	11	10	9	8	7	6	5	4	3	2	1
100'	"	"	"	"	"	"	"	"	"	"	100'	100'
100'	"	"	"	"	"	"	"	"	"	"	100'	100'
14	15	16	17	18	19	20	21	22	23	24	25	26
100'	"	"	"	"	"	"	"	"	"	"	100'	100'
100'	"	"	"	"	"	"	"	"	"	"	100'	100'
13	12	11	10	BLOCK 7			6	5	4	3	2	1
100'	"	"	"	9	8	7	"	"	"	"	100'	100'
100'	"	"	"	"	"	"	"	"	"	"	100'	100'
100'	"	"	"	"	"	"	"	"	"	"	100'	100'
13	12	11	10	9	8	7	6	5	4	3	2	1
100'	"	"	"	"	"	"	"	"	"	"	100'	100'
100'	"	"	"	"	"	"	"	"	"	"	100'	100'
14	15	16	17	18	19	20	21	22	23	24	25	26
100'	"	"	"	"	"	"	"	"	"	"	100'	100'
100'	"	"	"	"	"	"	"	"	"	"	100'	100'
1321.7'												

CERTIFICATE OF OWNER:

KNOW ALL MEN BY THESE PRESENTS, That I, GEORGE SLY, of Tulsa County, Oklahoma, am the owner of the following described real estate located in Wagoner County, Oklahoma, and described as follows, to-wit: The NORTHWEST QUARTER of the SOUTHWEST QUARTER of SECTION 22 T18 N. R19 E. And I hereby certify that I have caused the same to be sub-divided into lots and Streets according to this Plat which I hereby adopt under the name of SLY'S SUB - DIVISION of the NW 1/4 SW 1/4 Section 22 T 18 N R 19 E., and I hereby dedicate and relinquish to the Public forever all Streets shown hereon.

STATE OF OKLAHOMA
COUNTY OF WAGONER

DATED THIS 11th day of May 1950

George Sly
GEORGE SLY

Before me Naomi M Harris, a Notary Public in and for said County and State personally appeared GEORGE SLY to me known to be the identical person who executed the foregoing instrument and acknowledged to me that he executed the same as his free and voluntary act and deed for the uses and purposes therein set forth.

Witness my hand and Seal this 11th day of May 1950

Naomi M Harris
Notary Public

My Commission Expires Jan 30, 1953.

CERTIFICATE OF SURVEYOR:

KNOW ALL MEN BY THESE PRESENTS, That I, FRANK N. WILLIAMS a resident of Muskogee County, Oklahoma and the County Surveyor of Muskogee County, Oklahoma have carefully surveyed and platted the above tract of Land known as SLY'S SUB - DIVISION of the NW 1/4 SW 1/4 SEC. 22 T 18 N R 19 E, and that this is an accurate Plat of the same.

Signed this 5th day of May 1950.

Frank N. Williams
Surveyor

STATE OF OKLAHOMA
COUNTY OF WAGONER

Before me Naomi M Harris, a Notary Public in and for said County and State personally appeared FRANK N. WILLIAMS, to me known to be the identical person who executed the same as his free and voluntary act and deed for the uses and purposes therein set forth.

Witness my hand and Seal this 5th day of May 1950.

Naomi M Harris
Notary Public

My Commission Expires January 30, 1953.

*Filed
May 11-1950
at 4 p.m.*