

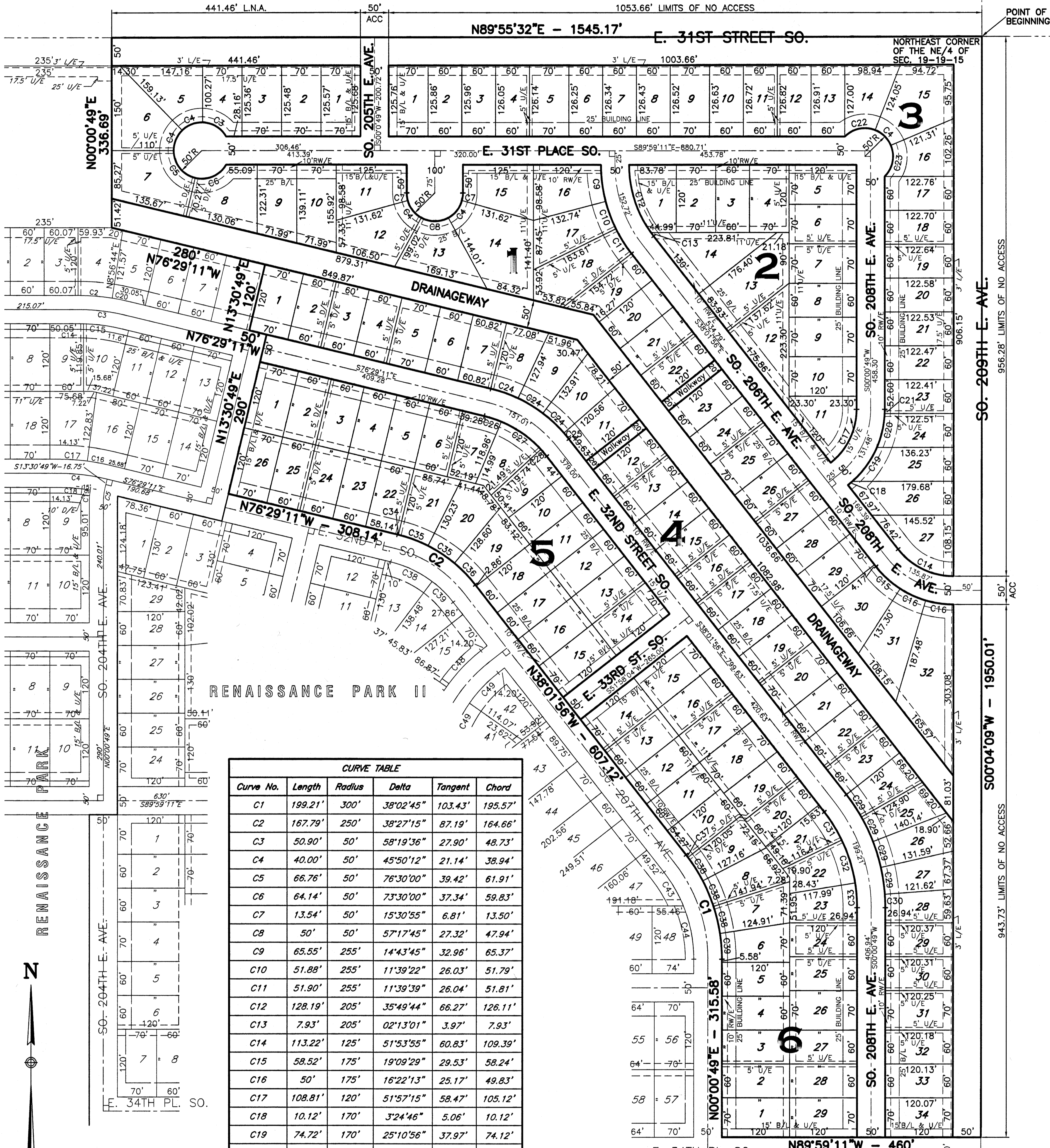
# RENAISSANCE PARK III

An Addition to the NE/4 of Section 19, T19N, R15E, Wagoner County, Oklahoma.  
Tract contains 43.29 Acres.

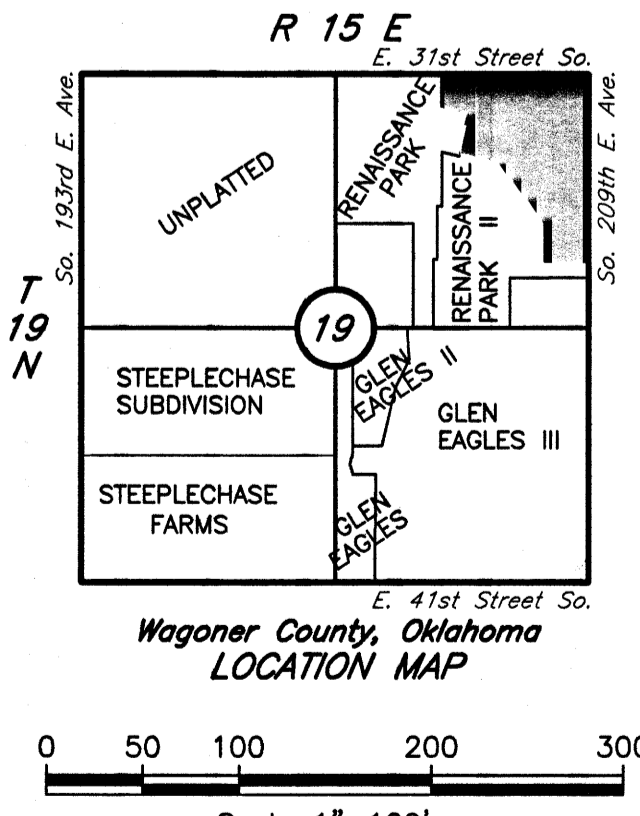
### LEGAL DESCRIPTION

A TRACT OF LAND BEING A PART OF THE NORTHEAST QUARTER (NE/4) OF SECTION 19, T19N, R15E OF THE I.B. & M., WAGONER COUNTY, OKLAHOMA. SAID TRACT BEING MORE PARTICULARLY DESCRIBED BY METES AND BOUNDS AS FOLLOWS:

BEGINNING AT THE NORTHEAST CORNER OF THE NE/4 OF SECTION 19; THENCE S00°04'09"W A DISTANCE OF 1950.01 FT.; THENCE N89°59'11"W A DISTANCE OF 460 FT.; THENCE N00°00'49"E A DISTANCE OF 315.58 FT. TO A POINT OF CURVE HAVING A RADIUS OF 300 FT., A DELTA ANGLE OF 38°02'45"; THENCE ALONG SAID CURVE TO THE LEFT A DISTANCE OF 199.21 FT.; THENCE N38°01'56"W A DISTANCE OF 607.12 FT. TO A POINT OF CURVE HAVING A RADIUS OF 250 FT., A DELTA ANGLE OF 38°27'15"; THENCE ALONG SAID CURVE TO THE LEFT A DISTANCE OF 167.79 FT.; THENCE N76°29'11"W A DISTANCE OF 308.14 FT.; THENCE N13°30'49"E A DISTANCE OF 290 FT.; THENCE N76°29'11"W A DISTANCE OF 50 FT.; THENCE N13°30'49"E A DISTANCE OF 120 FT.; THENCE N76°29'11"W A DISTANCE OF 280 FT.; THENCE N00°00'49"E A DISTANCE OF 336.69 FT.; THENCE N89°55'32"E A DISTANCE OF 1545.17 FT. TO THE POINT OF BEGINNING. TRACT CONTAINS 43.29 ACRES.



Curve No.	Length	Radius	Delta	Tangent	Chord
C1	199.21'	300'	38°02'45"	103.43'	195.57'
C2	167.79'	250'	38°27'15"	87.19'	164.66'
C3	50.90'	50'	58°19'36"	27.90'	48.73'
C4	40.00'	50'	45°50'12"	21.14'	38.94'
C5	66.76'	50'	76°30'00"	39.42'	61.91'
C6	64.14'	50'	73°30'00"	37.34'	59.83'
C7	13.54'	50'	15°30'55"	6.81'	13.50'
C8	50'	50'	57°17'45"	27.32'	47.94'
C9	65.55'	255'	14°43'45"	32.96'	65.37'
C10	51.88'	255'	11°39'22"	26.03'	51.79'
C11	51.90'	255'	11°39'39"	26.04'	51.81'
C12	128.19'	205'	35°49'44"	66.27'	126.11'
C13	7.93'	205'	02°13'01"	3.97'	7.93'
C14	113.22'	125'	51°53'55"	60.83'	109.39'
C15	58.52'	175'	19°09'29"	29.53'	58.24'
C16	50'	175'	16°22'13"	25.17'	49.83'
C17	108.81'	120'	51°57'15"	58.47'	105.12'
C18	10.12'	170'	3°24'46"	5.06'	10.12'
C19	74.72'	170'	25°10'56"	37.97'	74.12'
C20	61.90'	170'	20°51'47"	31.30'	61.56'
C21	7.41'	170'	2°29'46"	3.70'	7.40'
C22	58.36'	50'	66°52'38"	33.02'	55.10'
C23	59.72'	50'	68°25'56"	34.00'	56.23'
C24	51.35'	250'	11°46'04"	25.76'	51.26'
C25	13.75'	250'	3°09'02"	6.88'	13.74'
C26	32.00'	200'	9°10'02"	16.04'	31.96'
C27	86.23'	200'	24°42'12"	43.80'	85.56'
C28	16.00'	200'	4°35'01"	8.00'	16.00'
C29	48.00'	325'	8°27'43"	24.04'	47.96'
C30	23.81'	325'	4°11'52"	11.91'	23.80'
C31	58.61'	275'	12°12'41"	29.42'	58.50'
C32	80.00'	275'	16°40'04"	40.28'	79.72'
C33	44.00'	275'	09°10'00"	22.04'	43.95'
C34	1.86'	250'	00°25'38"	0.93'	1.86'
C35	56.26'	250'	12°53'38"	28.25'	56.14'
C36	53.40'	250'	12°14'21"	26.90'	53.30'
C37	5.73'	300'	1°05'42"	2.87'	5.73'
C38	49.27'	300'	9°24'37"	24.69'	49.22'
C39	45.66'	300'	8°43'14"	22.87'	45.62'



LEGEND  
U/E—UTILITY EASEMENT  
B/L—BUILDING LINE  
RW/E—RESTRICTED WATER EASEMENT  
LNA—LIMITS OF NO ACCESS  
ACC—LIMITS OF ACCESS  
D/E—DRAINAGE EASEMENT  
L/E—LANDSCAPE EASEMENT

EASEMENT DIMENSIONS:  
LOTS 9,10,19 & 20  
BLOCK 6

ENGINEER:  
SPRADLING & ASSOCIATES, INC.  
8556 E. 101ST STREET, SUITE F  
TULSA, OKLAHOMA 74133  
918-369-3701

OWNER:  
31ST STREET L.L.C.  
P.O. BOX 700445  
TULSA, OKLAHOMA 74170  
918-488-8900

Certified True Copy  
CAROLYN KUSLER, COUNTY CLERK  
Wagoner County, Okla.  
By: *[Signature]*