

RENAISSANCE PARK III

An Addition to the NE/4 of Section 19, T19N, R15E, Wagoner County, Oklahoma.
 Tract contains 39.66 Acres.

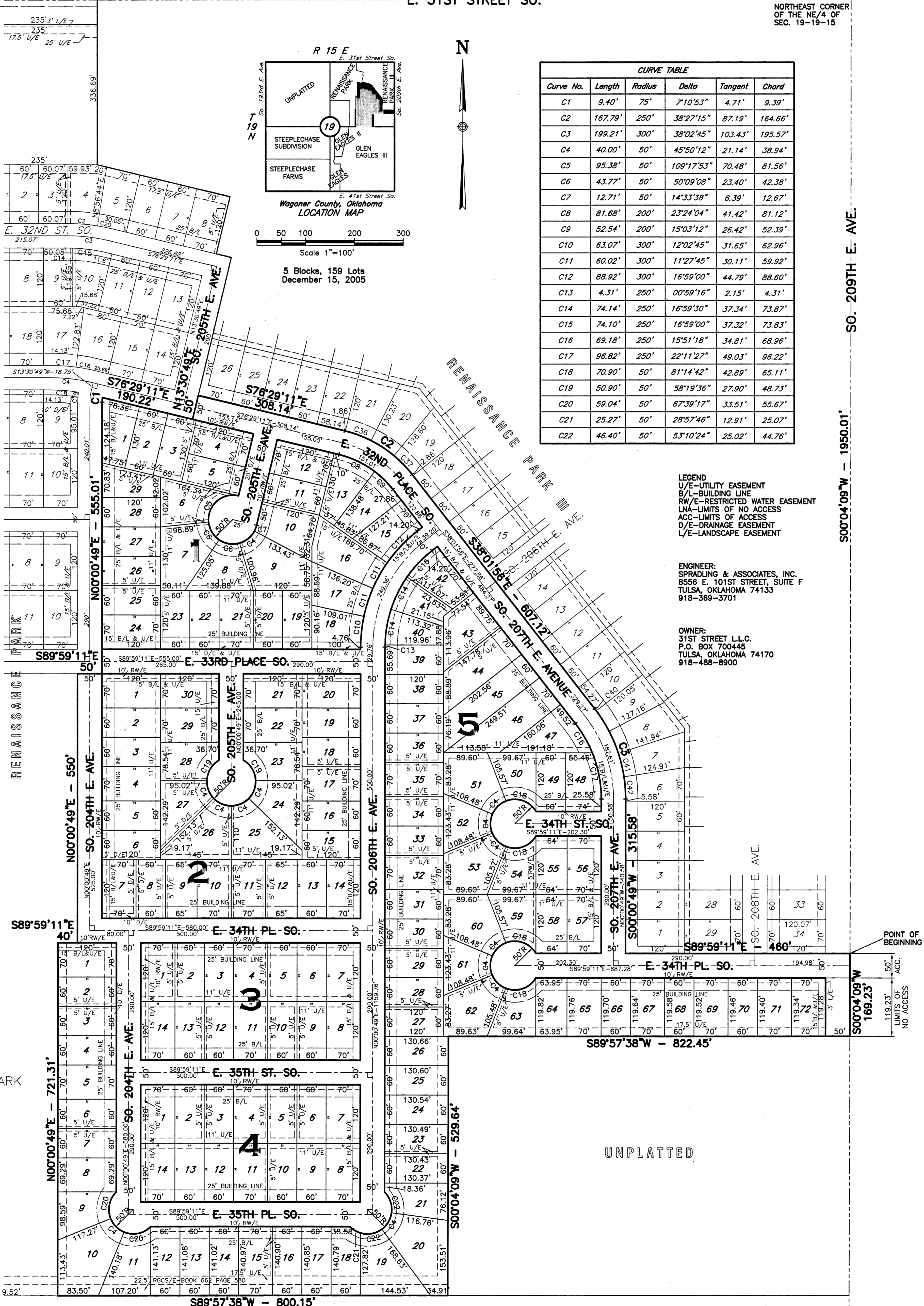
LEGAL DESCRIPTION

A TRACT OF LAND BEING A PART OF THE NORTHEAST QUARTER (NE/4) OF SECTION 19, T19N, R15E OF THE I.B. & M., WAGONER COUNTY, OKLAHOMA. SAID TRACT BEING MORE PARTICULARLY DESCRIBED BY METES AND BOUNDS AS FOLLOWS:

COMMENCING AT THE NORTHEAST CORNER OF THE NE/4 OF SECTION 19; THENCE S00°04'09"W A DISTANCE OF 1950.01 FT. TO THE POINT OF BEGINNING; THENCE CONTINUING S00°04'09"W A DISTANCE OF 169.23 FT.; THENCE S89°57'38"W A DISTANCE OF 822.45 FT.; THENCE S00°04'09"W A DISTANCE OF 529.64 FT.; THENCE S89°57'38"W A DISTANCE OF 800.15 FT.; THENCE N00°00'49"E A DISTANCE OF 721.31 FT.; THENCE S89°59'11"E A DISTANCE OF 40.00 FT.; THENCE N00°00'49"E A DISTANCE OF 550.00 FT.; THENCE S89°59'11"E A DISTANCE OF 50.00 FT.; THENCE N00°00'49"E A DISTANCE OF 555.01 FT. TO A POINT OF CURVE HAVING A RADIUS OF 75.00 FT., A DELTA ANGLE OF 7°10'53", THENCE ALONG SAID CURVE TO THE RIGHT A DISTANCE OF 9.40 FT.; THENCE S76°29'11"E A DISTANCE OF 190.22 FT.; THENCE N13°30'49"E A DISTANCE OF 50.00 FT.; THENCE S76°29'11"E A DISTANCE OF 308.14 FT. TO A POINT OF CURVE HAVING A RADIUS OF 250.00 FT., A DELTA ANGLE OF 38°27'15", THENCE ALONG SAID CURVE TO THE RIGHT A DISTANCE OF 167.79 FT.; THENCE S38°01'56"E A DISTANCE OF 607.12 FT. TO A POINT OF CURVE HAVING A RADIUS OF 300.00 FT., A DELTA ANGLE OF 38°02'45", THENCE ALONG SAID CURVE TO THE RIGHT A DISTANCE OF 199.21 FT.; THENCE S00°00'49"W A DISTANCE OF 315.58 FT.; THENCE S89°59'11"E A DISTANCE OF 460.00 FT. TO THE POINT OF BEGINNING.
 TRACT CONTAINS 39.66 ACRES.

E. 31ST STREET SO.

NORTHEAST CORNER OF THE NE/4 OF SEC. 19-19-15



Curve No.	Length	Radius	Delta	Tangent	Chord
C1	9.40'	75'	7°10'53"	4.71'	9.39'
C2	167.79'	250'	38°27'15"	87.19'	164.66'
C3	199.21'	300'	38°02'45"	103.43'	195.57'
C4	40.00'	50'	45°50'12"	21.14'	38.94'
C5	95.38'	50'	109°17'53"	70.48'	81.56'
C6	43.77'	50'	50°09'08"	23.40'	42.38'
C7	12.71'	50'	14°33'38"	6.39'	12.67'
C8	81.68'	200'	23°24'04"	41.42'	81.12'
C9	52.54'	200'	15°03'12"	26.42'	52.39'
C10	63.07'	300'	12°02'45"	31.65'	62.96'
C11	60.02'	300'	11°27'45"	30.11'	59.92'
C12	88.92'	300'	16°59'00"	44.79'	88.60'
C13	4.31'	250'	00°59'16"	2.15'	4.31'
C14	74.14'	250'	16°59'30"	37.34'	73.87'
C15	74.10'	250'	16°59'00"	37.32'	73.83'
C16	69.18'	250'	15°51'18"	34.81'	68.96'
C17	96.82'	250'	22°11'27"	49.03'	96.22'
C18	70.90'	50'	81°14'42"	42.89'	65.11'
C19	50.90'	50'	58°19'36"	27.90'	48.73'
C20	59.04'	50'	67°39'17"	33.51'	55.67'
C21	25.27'	50'	28°57'46"	12.91'	25.07'
C22	46.40'	50'	53°10'24"	25.02'	44.76'

LEGEND
 U/E-UTILITY EASEMENT
 B/L-BUILDING LINE
 RW/E-RESTRICTED WATER EASEMENT
 LNA-LIMITS OF NO ACCESS
 ACC-LIMITS OF ACCESS
 D/E-DRAINAGE EASEMENT
 L/E-LANDSCAPE EASEMENT

ENGINEER:
 SPRADLING & ASSOCIATES, INC.
 8556 E. 101ST STREET, SUITE F
 TULSA, OKLAHOMA 74133
 918-369-3701

OWNER:
 31ST STREET L.L.C.
 P.O. BOX 700445
 TULSA, OKLAHOMA 74170
 918-488-8900

SO. 209TH E. AVE.
 SO. 209TH E. AVE. - 1950.01'

POINT OF BEGINNING
 SO. 208TH E. AVE.
 SO. 208TH E. AVE. - 119.23'

GLEN EAGLES III

Certified True Copy
 CAROLYN KUSLER, COUNTY CLERK
 Wagoner County, Okla.
 By *Sharon K. Shaw*
 DEPUTY