

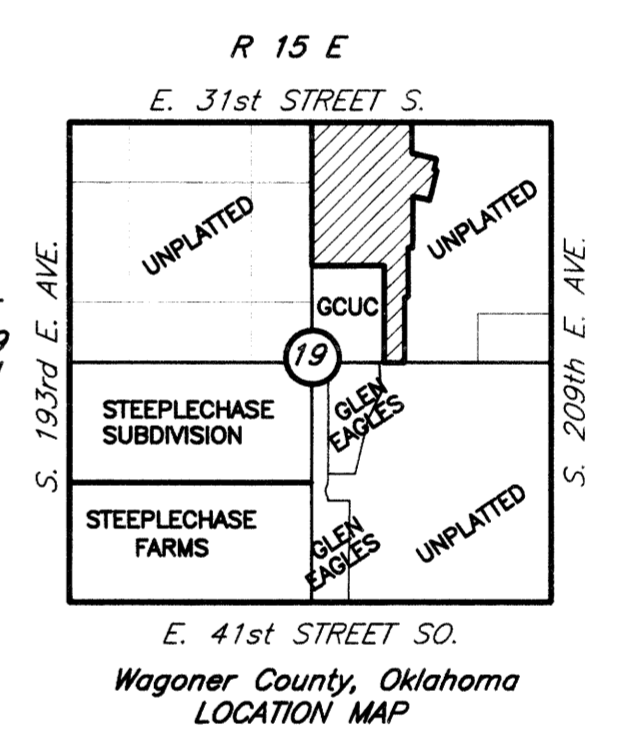
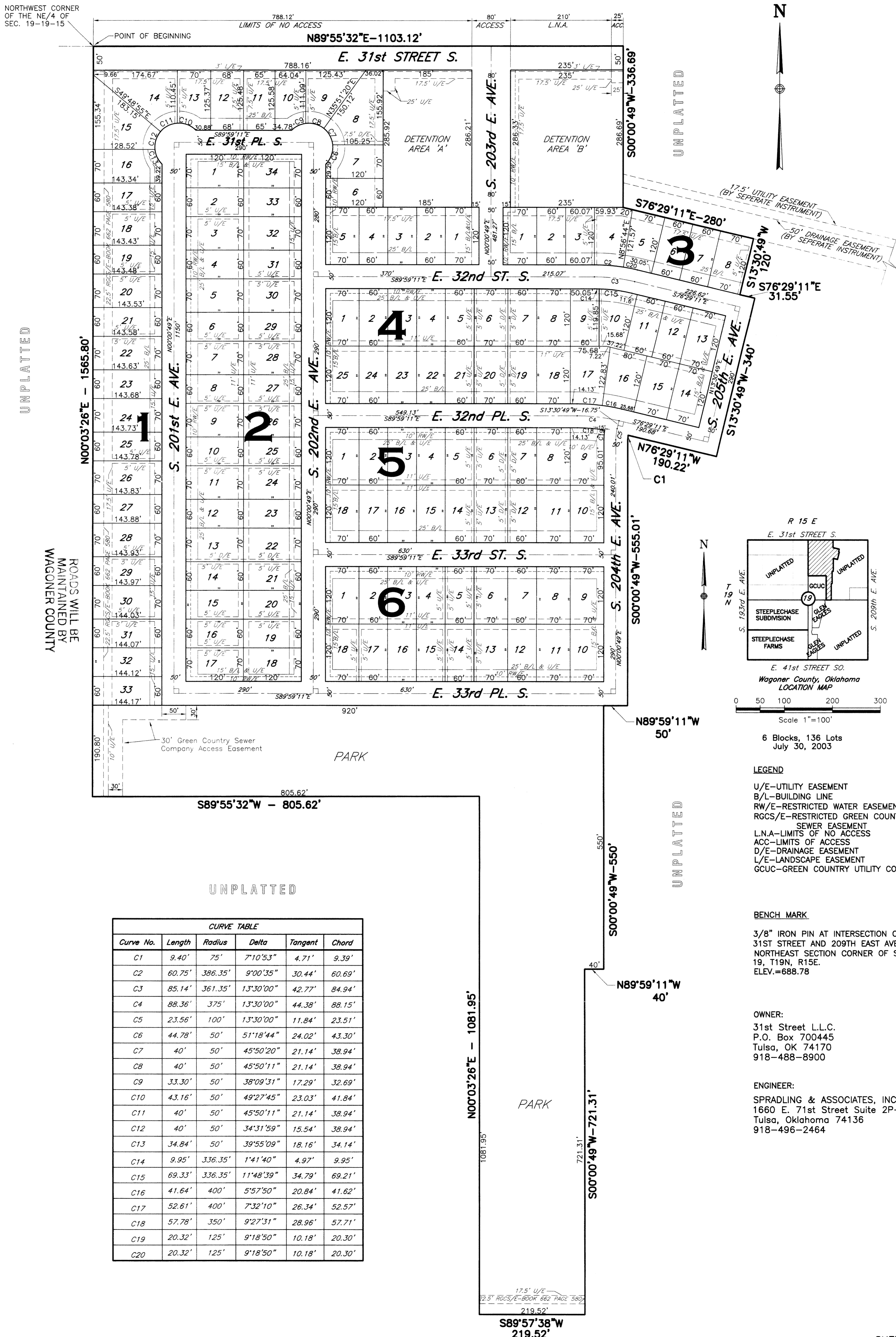
RENAISSANCE PARK

An Addition to the NE/4 of Section 19, T19N, R15E, Wagoner County, Oklahoma.
 Tract contains 48.02 Acres.

LEGAL DESCRIPTION

A TRACT OF LAND BEING A PART OF THE WEST HALF OF THE NORTHEAST QUARTER (W/2 NE/4) OF SECTION 19, T 19 N, R 15 E, OF THE 1B & M, WAGONER COUNTY, OKLAHOMA. SAID TRACT BEING MORE PARTICULARLY DESCRIBED BY METES AND BOUNDS AS FOLLOWS:

BEGINNING AT THE NORTHWEST CORNER OF THE W/2 NE/4 OF SECTION 19; THENCE N89°55'32"E A DISTANCE OF 1103.12 FEET; THENCE S00°00'49"W A DISTANCE OF 336.69 FEET; THENCE S76°29'11"E A DISTANCE OF 280 FEET; THENCE S13°30'49"W A DISTANCE OF 120 FEET; THENCE S76°29'11"E A DISTANCE OF 31.55 FEET; THENCE S13°30'49"W A DISTANCE OF 340 FEET; THENCE N76°29'11"W A DISTANCE OF 190.22 FEET TO A POINT OF CURVE HAVING A RADIUS OF 75 FEET, A DELTA ANGLE OF 7°10'53"; THENCE S07°11'42"W ALONG SAID CURVE TO THE LEFT A DISTANCE OF 9.40 FEET; THENCE S00°00'49"W A DISTANCE OF 555.01 FEET; THENCE N89°59'11"W A DISTANCE OF 50 FEET; THENCE S00°00'49"W A DISTANCE OF 550 FEET; THENCE N89°59'11"W A DISTANCE OF 40 FEET; THENCE S00°00'49"W A DISTANCE OF 721.31 FEET; THENCE S89°57'38"W A DISTANCE OF 219.52 FEET; THENCE N00°03'26"E A DISTANCE OF 1081.95 FEET; THENCE S89°55'32"W A DISTANCE OF 805.62 FEET; THENCE N00°03'26"E A DISTANCE OF 1565.80 FEET TO THE POINT OF BEGINNING. TRACT CONTAINS 48.02 ACRES.



6 Blocks, 136 Lots
 July 30, 2003

LEGEND

- U/E-UTILITY EASEMENT
- B/L-BUILDING LINE
- RW/E-RESTRICTED WATER EASEMENT
- RGCS/E-RESTRICTED GREEN COUNTRY SEWER EASEMENT
- L.N.A-LIMITS OF NO ACCESS
- ACC-LIMITS OF ACCESS
- D/E-DRAINAGE EASEMENT
- L/E-LANDSCAPE EASEMENT
- GCUC-GREEN COUNTRY UTILITY COMPANY

BENCH MARK

3/8" IRON PIN AT INTERSECTION OF EAST 31ST STREET AND 209TH EAST AVENUE NORTHEAST SECTION CORNER OF SECTION 19, T19N, R15E. ELEV.=688.78

OWNER:
 31st Street L.L.C.
 P.O. Box 700445
 Tulsa, OK 74170
 918-488-8900

ENGINEER:
 SPRADLING & ASSOCIATES, INC.
 1660 E. 71st Street Suite 2P-2
 Tulsa, Oklahoma 74136
 918-496-2464

CURVE TABLE					
Curve No.	Length	Radius	Delta	Tangent	Chord
C1	9.40'	75'	7°10'53"	4.71'	9.39'
C2	60.75'	386.35'	9°00'35"	30.44'	60.69'
C3	85.14'	361.35'	13°30'00"	42.77'	84.94'
C4	88.36'	375'	13°30'00"	44.38'	88.15'
C5	23.56'	100'	13°30'00"	11.84'	23.51'
C6	44.78'	50'	51°18'44"	24.02'	43.30'
C7	40'	50'	45°50'20"	21.14'	38.94'
C8	40'	50'	45°50'11"	21.14'	38.94'
C9	33.30'	50'	38°09'31"	17.29'	32.69'
C10	43.16'	50'	49°27'45"	23.03'	41.84'
C11	40'	50'	45°50'11"	21.14'	38.94'
C12	40'	50'	34°31'59"	15.54'	38.94'
C13	34.84'	50'	39°55'09"	18.16'	34.14'
C14	9.95'	336.35'	1°41'40"	4.97'	9.95'
C15	69.33'	336.35'	11°48'39"	34.79'	69.21'
C16	41.64'	400'	5°57'50"	20.84'	41.62'
C17	52.61'	400'	7°32'10"	26.34'	52.57'
C18	57.78'	350'	9°27'31"	28.96'	57.71'
C19	20.32'	125'	9°18'50"	10.18'	20.30'
C20	20.32'	125'	9°18'50"	10.18'	20.30'