

Basis of Bearings

ASSUMED BEARING OF S 00°03'11" W ALONG THE EAST LINE OF THE NE/4 OF SECTION 32, T-18-N, R-15-E, OF THE INDIAN MERIDIAN, WAGONER COUNTY, STATE OF OKLAHOMA.

Monumentation

ALL CORNERS HEREON WERE SET USING A 3/8" X 18" STEEL PIN WITH A PLASTIC CAP STAMPED "PLS 1283" AT ALL CORNERS.

Benchmark

5/8" REBAR-1 1/2" ALUMINUM CAP SET IN A CONCRETE POST STAMPED "BA 15" SET SOUTHWEST OF CENTERLINE OF INTERSECTION OF E. 111TH STREET AND S. 209TH EAST AVE. ELEV=691.76 (NGVD 1929).

Notes

ALL STREET RIGHT-OF-WAY SHALL BE DEDICATED AS PUBLIC STREETS BY THIS PLAT.

ADDRESSES SHOWN ON THIS PLAT WERE ACCURATE AT THE TIME THIS PLAT WAS FILED. ADDRESSES ARE SUBJECT TO CHANGE AND SHOULD NEVER BE RELIED ON IN PLACE OF LEGAL DESCRIPTION.

Curve Table			
NUMBER	DELTA ANGLE	RADIUS	ARC LENGTH
C1	45°00'00"	125.00'	98.17'
C2	45°06'33"	175.00'	137.78'
C3	45°00'00"	175.00'	137.44'
C4	45°06'33"	125.00'	98.41'
C5	33°33'26"	25.00'	14.64'
C6	67°06'53"	35.00'	41.00'
C7	90°06'33"	25.00'	39.32'
C8	89°53'27"	25.00'	39.22'
C9	90°06'33"	25.00'	39.22'
C10	30°24'55"	25.00'	13.27'
C11	150°56'23"	50.00'	131.72'
C12	89°53'27"	25.00'	39.22'
C13	30°31'01"	25.00'	13.32'
C14	150°55'28"	50.00'	131.71'
C15	36°55'41"	125.00'	80.56'
C16	36°55'41"	175.00'	112.79'
C17	36°56'07"	175.00'	112.81'
C18	36°49'08"	125.00'	80.33'

Line Table		
NUMBER	BEARING	DISTANCE
L1	S 0°03'11" W	16.26'
L2	S 0°03'11" W	22.59'

Remington Trails

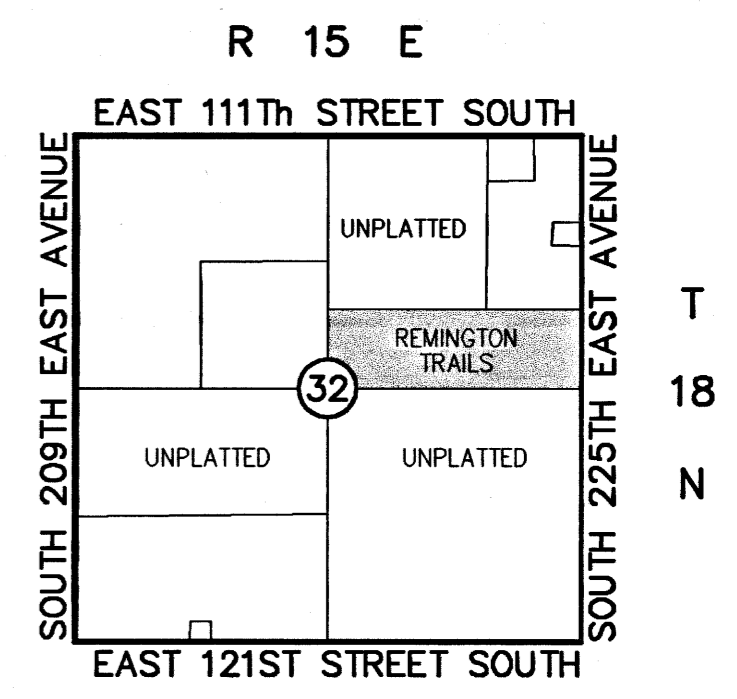
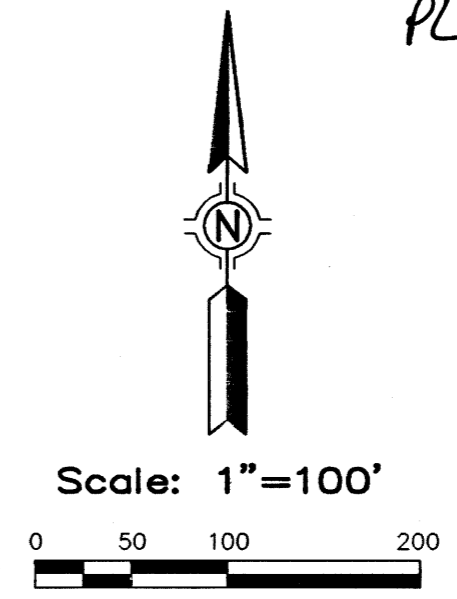
A SUBDIVISION IN WAGONER COUNTY, OKLAHOMA BEING A PART OF THE NE/4 OF SECTION THIRTY-TWO (32), TOWNSHIP 18 NORTH, RANGE 15 EAST, OF THE INDIAN BASE AND MERIDIAN

Legend

- ACC. ACCESS PERMITTED
- B/L BUILDING LINE
- LNA LIMITS OF NO ACCESS
- OD/E OVERLAND DRAINAGE EASEMENT
- R/W RIGHT OF WAY
- U/E UTILITY EASEMENT
- WL/E WATERLINE EASEMENT
- [1234] STREET ADDRESS

Owner/Developer
SUNCRRAFT HOMES
1309 WEST DETROIT STREET
BROKEN ARROW, OK 74012
PHONE: (918) 259-8000
CONTACT: HOWARD TACKETT

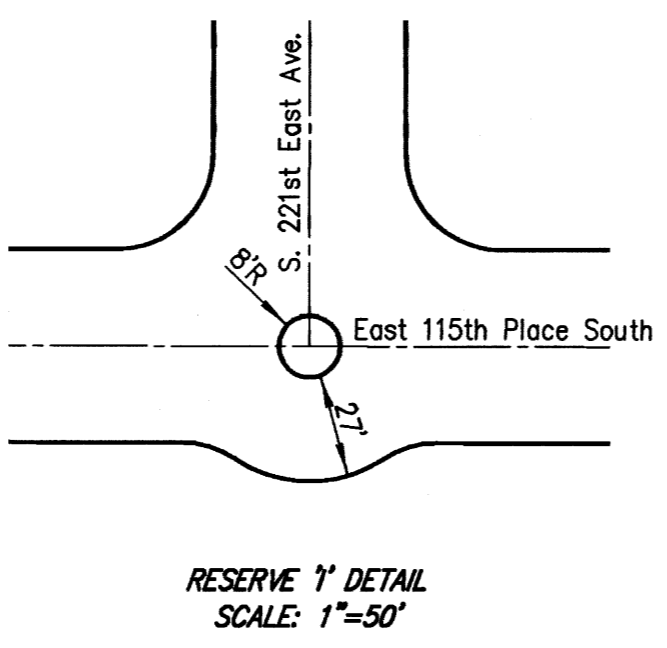
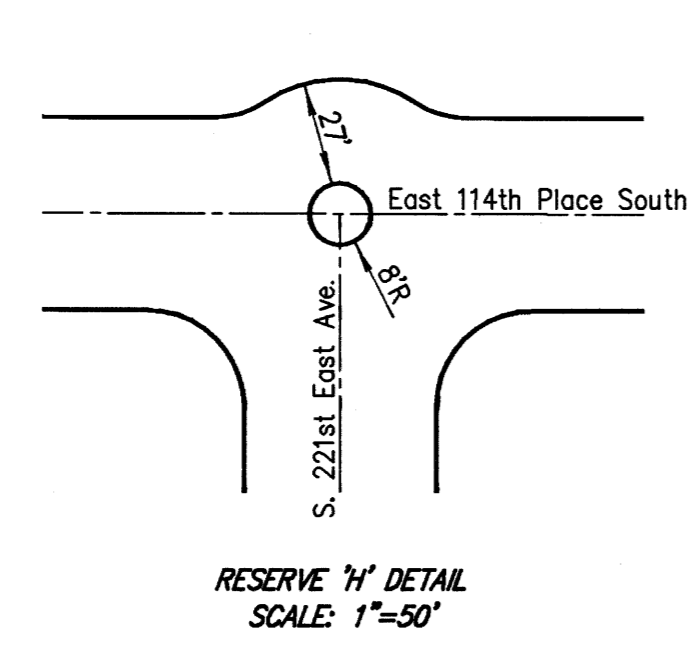
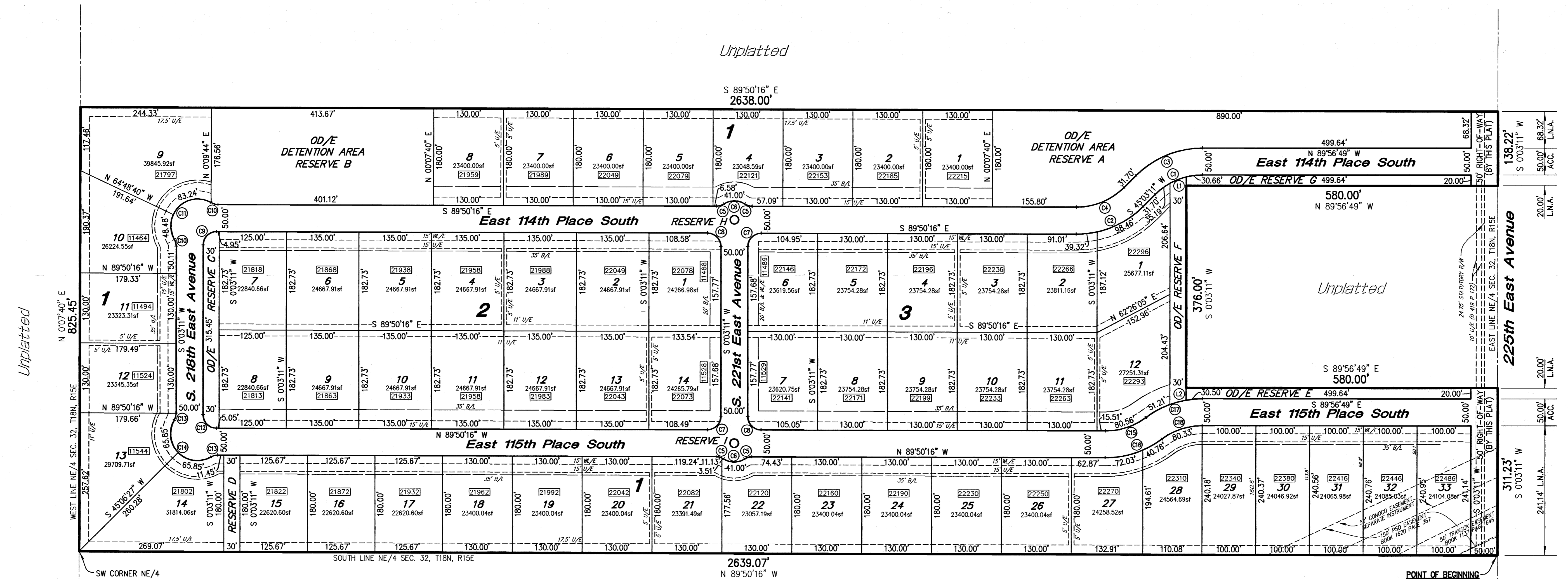
Engineer/Surveyor
HRAOK, INC.
1913 WEST TACOMA, SUITE-C
BROKEN ARROW, OKLAHOMA 74012
PHONE: (918) 258-3737
FAX: (918) 258-2554
CA#3643 EXPIRES 6-30-2007



Location Map
SCALE: 1"=2000'

REMINGTON TRAILS
SUBDIVISION CONTAINS FIFTY-NINE (59) LOTS IN THREE (3) BLOCKS
BLOCK 1 CONTAINS 33 LOTS
BLOCK 2 CONTAINS 14 LOTS
BLOCK 3 CONTAINS 12 LOTS

44.99 ACRES



ROADS WILL BE MAINTAINED BY WAGONER COUNTY.

Certified True Copy
CAROLYN KUSLER, COUNTY CLERK
Wagoner County, Okla.
By: *[Signature]*