

ENGINEER/SURVEYOR:
 HOWARD CONSULTING
 9320 W. 128th ST. SO.
 OKTAHA, OKLAHOMA 74450
 918-686-0564
 C.A. NO.: 3545
 EXP. DATE: 6/30/07

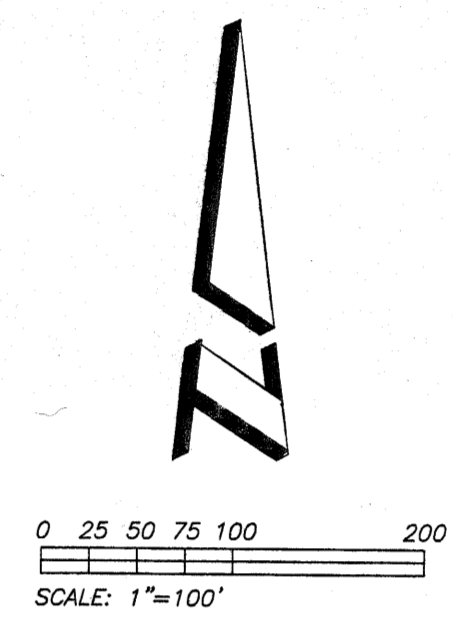
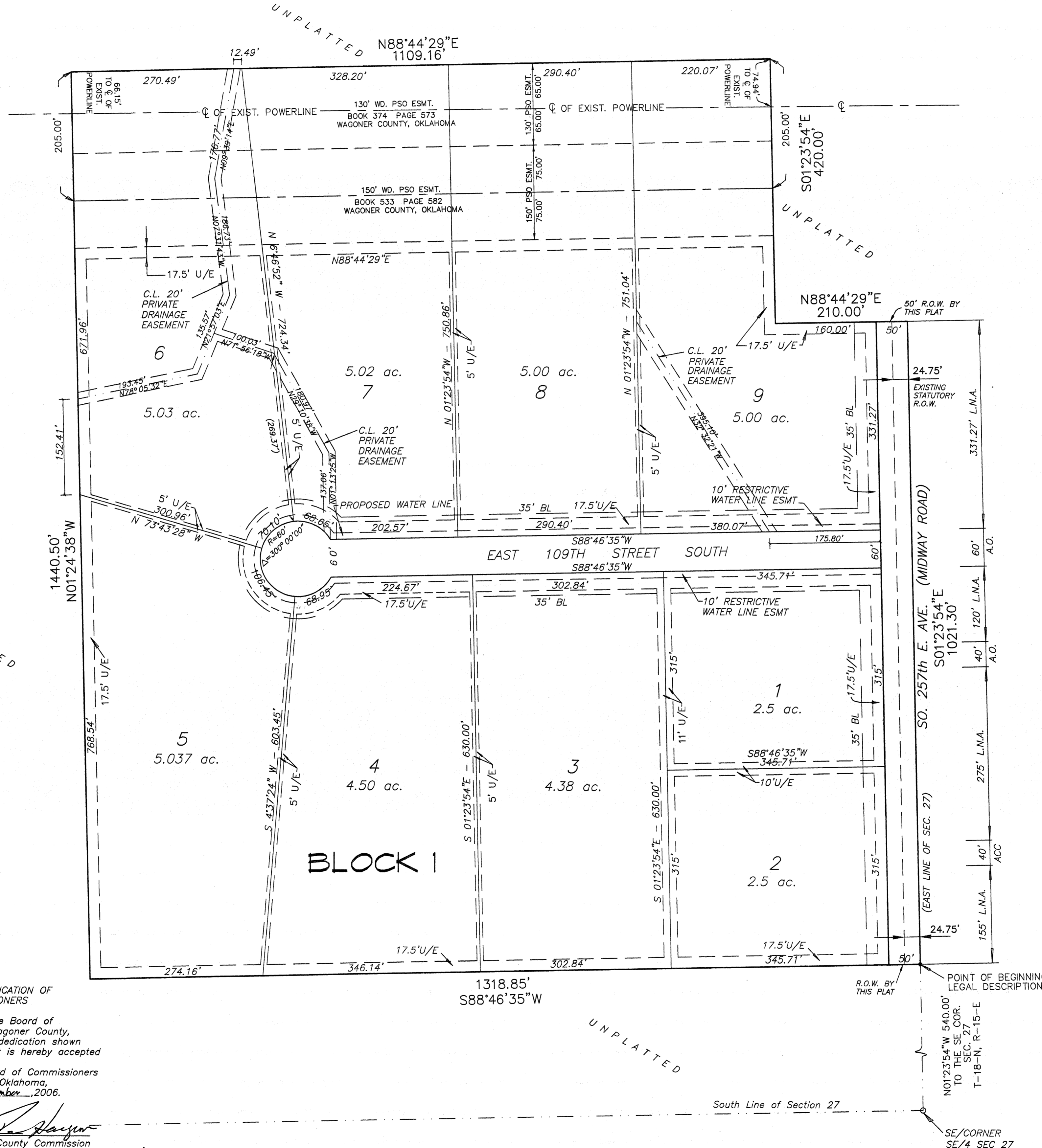
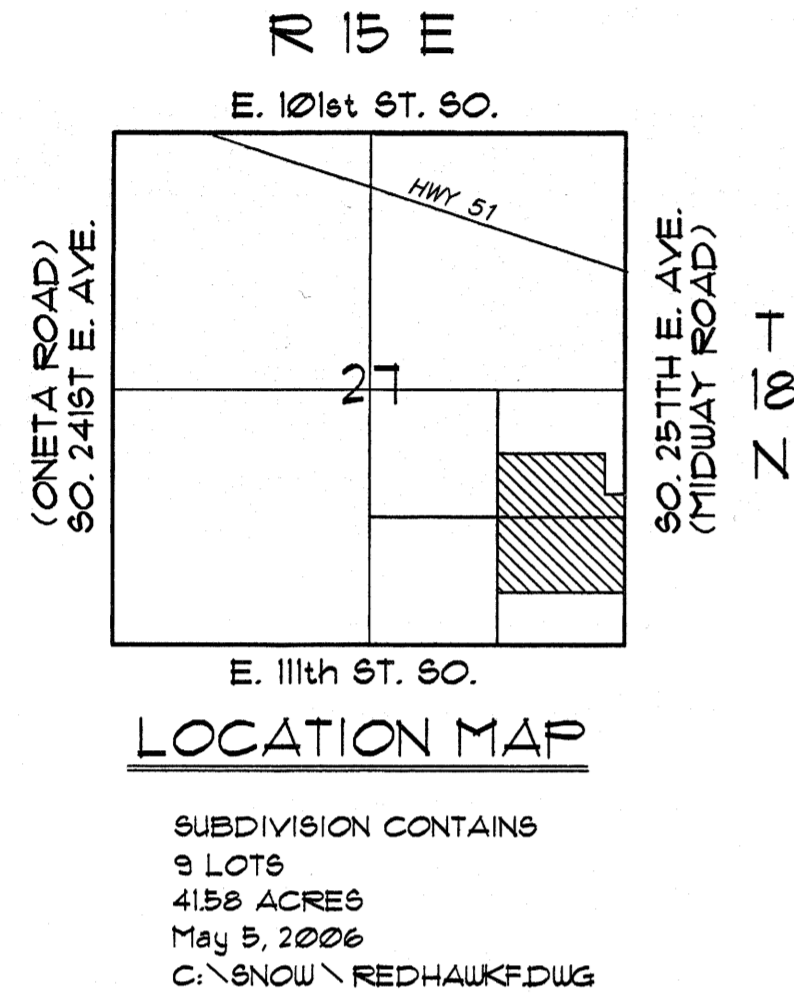
OWNER:
 STORYBOOK HOMES, INC.
 21284 E. 61ST ST. SO.
 BROKEN ARROW, OK 74014
 PHONE: 918-355-6955
 FAX: 918-355-5121
 CONTACT: GERALD SNOW

ROADS WILL BE
 MAINTAINED BY
 WAGONER COUNTY

FINAL PLAT
REDHAWK FARMS
 AN ADDITION IN WAGONER COUNTY, OKLAHOMA
 A SUBDIVISION IN THE E 1/2 OF THE SW 1/4 OF
 SECTION 27, T-18-N, R-15-E OF THE 1.B. & M.

2006-17858 Book: 1629 pg: 280
 11/20/2006 12:18 PM pg: 280 - 280
 Fees: \$58.00 Doc: \$0.00
 Carolyn M. Kusler, County Clerk
 Wagoner County - State of Oklahoma

PLC1-46A
 FINAL PLAT
 CERTIFICATE OF APPROVAL
 I hereby certify that this plat
 was approved by the Wagoner County
 Planning Commission on:
 11/20/06
[Signature]



LEGEND

BL.	BUILDING LINE
C.L.	CENTER LINE
U/E	UTILITY EASEMENT
A.O.	ACCESS OPENING
L.N.A.	LIMITS OF NO ACCESS
ROW.	DEDICATED ROAD RIGHT-OF-WAY

DEPARTMENT OF ENVIRONMENTAL QUALITY
 The Tulsa Office of the Department of Environmental Quality has approved this plat of "Redhawk Farms", for the use of individual water systems and On-site sewer systems on the day of October 20, 2006.
[Signature]
 Environmental Program Specialist
 Department of Environmental Quality

PLANNING COMMISSION
 I, *[Signature]*, Chairman/Secretary of the Wagoner County Planning Commission, Wagoner County, State of Oklahoma, hereby certify that the said commission duly approved that plat of "Redhawk Farms" on the 16th day of November, 2006.
[Signature]
 Chairman/Secretary

STATE OF OKLAHOMA } SS
 COUNTY OF Wagoner }
 I, Glebe Marshall do hereby certify that I am the duly elected, qualified and acting County Treasurer of Wagoner County, State of Oklahoma. That the tax records of said county show all taxes are paid for the year and prior years on the land shown on the plat of "Redhawk Farms", in Wagoner County Oklahoma; that the required statutory security has been deposited in the office of the County Treasurer, guaranteeing payment of the current year's taxes.
 Dated the 14th day of November, 2006.
[Signature]
 Wagoner County Treasurer

STATE OF OKLAHOMA } SS
 COUNTY OF Wagoner }
 I, Carolyn Kusler, Wagoner County Clerk, in and for the County and State of Oklahoma above named, do hereby certify that the foregoing is a true and correct copy of a like instrument now on file in my office.
 Dated the 20 day of November, 2006
 Carolyn Kusler, Wagoner County Clerk
[Signature]
 Deputy

ACCEPTANCE OF DEDICATION OF BOARD OF COMMISSIONERS
 Be it resolved by the Board of Commissioners of Wagoner County, Oklahoma, that the dedication shown on the attached Plat is hereby accepted
 Adopted by the Board of Commissioners of Wagoner County, Oklahoma, this 20 day of November, 2006.
 Attest:
[Signature]
 County Clerk County Commission

THE BASIS OF BEARINGS FOR THE SURVEY SHOWN THEREON IS THE EAST LINE OF SAID SECTION 27, N01°23'54"E
 This plat meets the Oklahoma minimum standards for the practice of Land Surveying as adopted by the Oklahoma State Board of Registration for Professional Engineers and Surveyors.