

ROLLING HILLS ADDITION

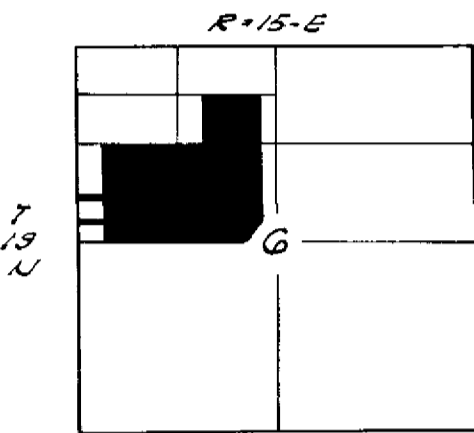
AN ADDITION IN WAGONER COUNTY, OKLAHOMA, A SUBDIVISION
OF A PART OF THE N 1/2 OF SEC. 6 T-19-N R-15-E

OWNER
ROLLING HILLS DEVELOPMENT CO.
TULSA, OKLAHOMA

Hammond Engineering Co.
Tulsa, Oklahoma

DATE: JAN. 12, 1959

SCALE: 1" = 100'



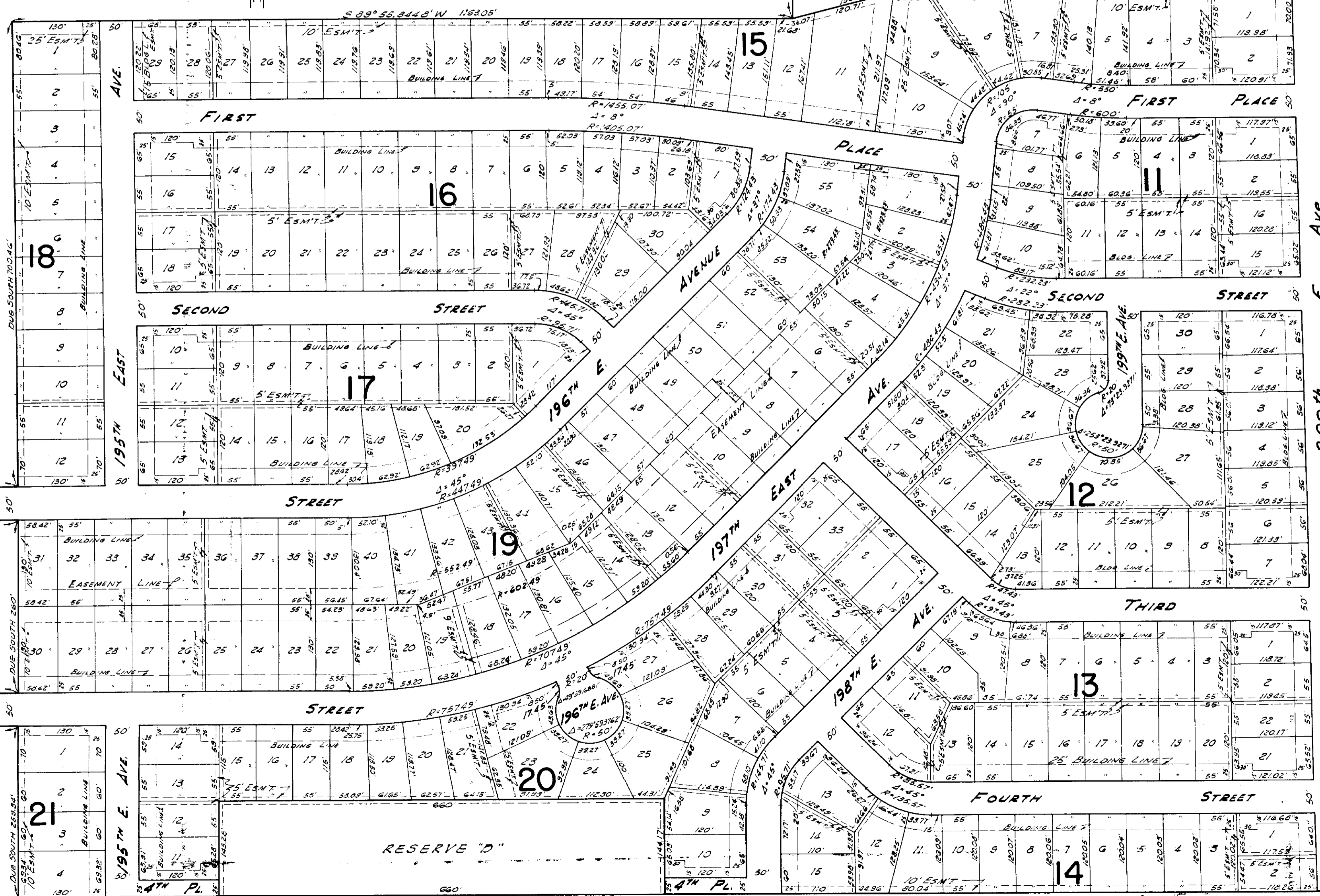
LOCATION MAP

SINE OF ANGLE
COUNTY OF OKLAHOMA
TULSA COUNTY
AT 10 AM
JACK G. JONES, County Clerk
JAN 19 1959

193 20' E AVENUE
DUE SOUTH 500'
DUE WEST 3400'

DUE SOUTH 253.34'
DUE WEST 3400'

E. Ave. 200 ft



N 39° 53' 37.93" E - 1973.26'