

CERTIFICATE OF DEDICATION

KNOW ALL MEN BY THESE PRESENTS:

THAT OKLAHOMA LAND AND DEVELOPMENT CO., INC., A CORPORATION IN THE STATE OF OKLAHOMA, OWNER OF THE LANDS SHOWN ON THE ANNEXED MAP OR PLAT OF RIDGEWAY HEIGHTS I, IN WAGONER COUNTY, STATE OF OKLAHOMA, DO HEREBY CERTIFY THAT OKLAHOMA LAND AND DEVELOPMENT CO., INC., HAS CAUSED THE SAME TO BE SURVEYED INTO LOTS, BLOCKS, STREETS AND AVENUES IN CONFORMITY TO THE ANNEXED PLAT WHICH OKLAHOMA LAND AND DEVELOPMENT CO., INC., HEREBY ADOPTS AS THE PLAT UNDER THE NAME OF RIDGEWAY HEIGHTS I, AN ADDITION TO WAGONER COUNTY, OKLAHOMA, AND DOES HEREBY DEDICATE TO PUBLIC USE ALL OF THE STREETS AND AVENUES AS SHOWN ON THE PLAT OF RIDGEWAY HEIGHTS I, AND DOES HEREBY DEDICATE THE USE OF THE EASEMENTS AS SHOWN ON THE PLAT OF RIDGEWAY HEIGHTS I, FOR THE INSTALLATION AND MAINTENANCE OF PUBLIC UTILITIES, AND DOES FURTHER DECLARE THAT THE USE, OWNERSHIP AND POSSESSION OF THE LAND LYING WITHIN THIS SUBDIVISION SHALL BE SUBJECT TO ALL RULES, COVENANTS, RESTRICTIONS, AND CONDITIONS WHICH SHALL RUN WITH THE LAND AND WHICH SHALL BE BINDING UPON ALL PARTIES HAVING OR ACQUIRING ANY RIGHT, TITLE OR INTEREST IN OR TO THE DESCRIBED PROPERTY AS MAY HERINAFTER BE SET FORTH IN A DECLARATION OF COVENANTS AND RESTRICTIONS AND A FURTHER DEED OF DEDICATION AND RESTRICTIVE COVENANTS FOR RIDGEWAY HEIGHTS I, AN ADDITION LOCATED IN WAGONER COUNTY, STATE OF OKLAHOMA.

IN WITNESS WHEREOF, WE HAVE SET OUR HAND AND SEAL THIS 17th DAY OF January, 1980.

OKLAHOMA LAND AND DEVELOPMENT CO., INC. AN OKLAHOMA CORPORATION

ATTEST: GAYE N. GILSTRAP SECRETARY BY: JOHN W. ADAIR PRESIDENT

STATE OF OKLAHOMA ) ) SS. COUNTY OF WAGONER ) THE FOREGOING INSTRUMENT WAS ACKNOWLEDGED BEFORE ME THIS 17th DAY OF January, 1980, BY JOHN W. ADAIR, PRESIDENT OF OKLAHOMA LAND AND DEVELOPMENT CO., INC., AN OKLAHOMA CORPORATION, ON BEHALF OF THE CORPORATION. MY COMMISSION EXPIRES: 4-20-83 Nancy A. Woodridge NOTARY PUBLIC

SURVEYOR'S CERTIFICATE I, ROBERT L. MCCUTCHAN, A REGISTERED LAND SURVEYOR, IN THE STATE OF OKLAHOMA, DO HEREBY CERTIFY THAT I HAVE CAREFULLY AND ACCURATELY SURVEYED AND STAKED INTO LOTS, BLOCKS AND STREETS THE ABOVE DESCRIBED PROPERTY LOCATED IN WAGONER COUNTY, STATE OF OKLAHOMA, THE SAME KNOWN AS RIDGEWAY HEIGHTS I AN ADDITION TO WAGONER COUNTY, STATE OF OKLAHOMA, AND THAT THE ABOVE PLAT IS A TRUE AND ACCURATE REPRESENTATION OF SAID SURVEY. WITNESS MY HAND AND SEAL THIS 15th DAY OF Jan, 1980.

ROBERT L. MCCUTCHAN REG. LAND SURVEYOR NO. 153

THE FOREGOING INSTRUMENT WAS ACKNOWLEDGED BEFORE ME, THIS 15th DAY OF JAN, 1980. SHARON E. RYAN NOTARY PUBLIC

DEPARTMENT OF HEALTH APPROVAL THE OKLAHOMA STATE DEPARTMENT OF HEALTH CERTIFIES THAT THIS PLAT IS APPROVED FOR THE CONSTRUCTION OF PUBLIC SEWAGE DISPOSAL SYSTEMS AND PUBLIC WATER SYSTEMS. SIGNED: Casson W. Sparks RPS DATE: Jan. 17, 1980 WAGONER COUNTY HEALTH DEPT.

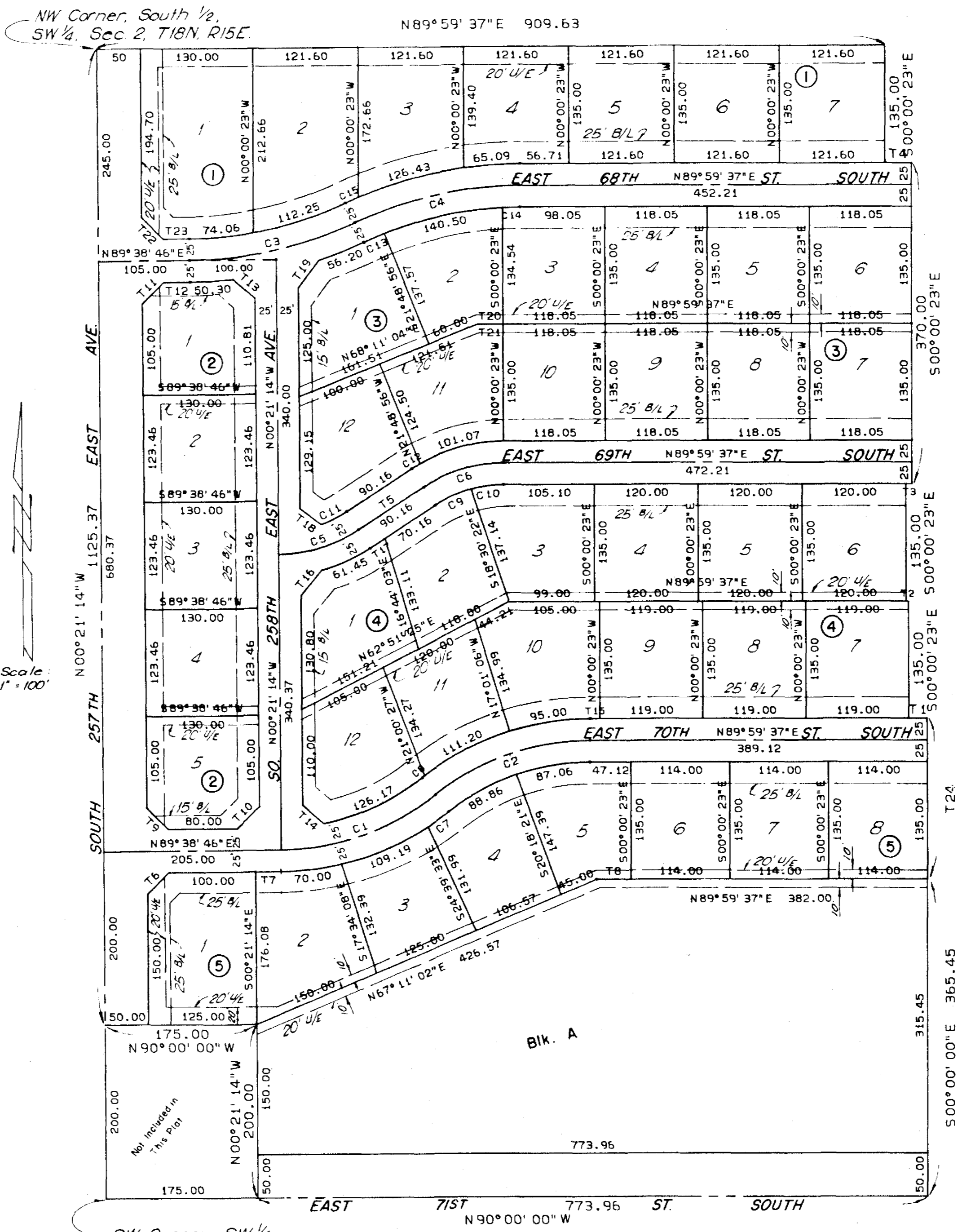
BONDED ABSTRACTER'S CERTIFICATE STATE OF OKLAHOMA ) ) SS. COUNTY OF WAGONER ) THE UNDERSIGNED DULY QUALIFIED ABSTRACTER IN AND FOR THE SAID COUNTY AND STATE HEREBY CERTIFIES THAT, ACCORDING TO THE RECORDS OF SAID COUNTY, TITLE TO THE LAND SHOWN ON THE ANNEXED PLAT OF RIDGEWAY HEIGHTS I, AN ADDITION TO WAGONER COUNTY, OKLAHOMA, APPEARS TO BE VESTED IN OKLAHOMA LAND AND DEVELOPMENT CO., INC., AN OKLAHOMA CORPORATION, ON THE DAY OF January, 1980, UNENCUMBERED BY PENDING ACTIONS, JUDGEMENTS, LIENS, TAXES, OR OTHER ENCUMBRANCES, EXCEPT MINERAL RESERVATIONS, AND RIGHTS-OF-WAY OF RECORD. EXECUTED THIS DAY OF January, 1980.

PERMANCY CERTIFICATE I DO HEREBY CERTIFY THAT THIS PLAT FULFILLS THE PERMANCY REQUIREMENTS AS OUTLINED IN SENATE BILL 377, SECTION 518, AS AMENDED. Robert L. McCutchan ROBERT L. MCCUTCHAN, LS NO. 153

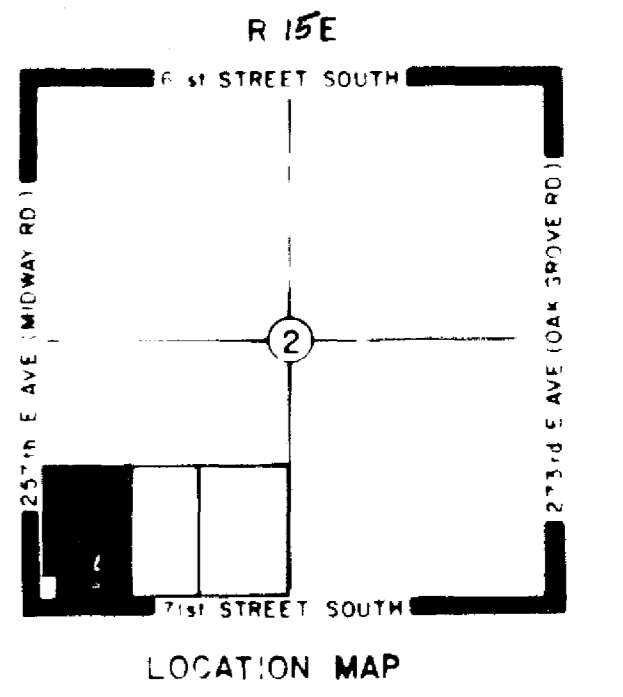
RIDGEWAY HEIGHTS I

Part of S. 1/2 S.W. 1/4 Sec. 2 T18N R15E

Wagoner Co. Okla.



Plat Cabinet 1 - 19A STATE OF OKLAHOMA COUNTY OF WAGONER Filed for Record in the Office of the COUNTY CLERK AND RECORDED JAN 17 1980 AT 1:22 O'CLARK JACK C. JONES, County Clerk By: [Signature] Deputy



T DATA table with columns: NO, BEARING, DISTANCE. Lists 24 data points for the survey.

CURVE DATA table with columns: NO, CHORD BEARING, CHORD, DELTA, RADIUS, LENGTH, TANGENT. Lists 15 curve data points.

LEGAL DESCRIPTION BEING A PART OF THE S-1/2 OF THE SW-1/4 OF SECTION 2, T 18 N, R 15 E, OF THE INDIAN MERIDIAN, WAGONER COUNTY, OKLAHOMA, AND BEING MORE PARTICULARLY DESCRIBED AS FOLLOWS: COMMENCING: AT THE SW CORNER OF SAID S-1/2 SW-1/4, THENCE: N 00°21'14" W, ALONG THE WEST LINE OF SAID SW-1/4, A DISTANCE OF 200.00' TO THE POINT OR PLACE OF BEGINNING, THENCE: CONTINUING N 00°21'14" W, ALONG SAID WEST LINE, A DISTANCE OF 1,125.37' TO THE NW CORNER OF SAID S-1/2 SW-1/4, THENCE: N 89°59'37" E, ALONG THE NORTH LINE SAID S-1/2 SW-1/4, A DISTANCE OF 909.63', THENCE: S 00°00'23" E, A DISTANCE OF 135.00', THENCE: N 89°59'37" E, A DISTANCE OF 30.69', THENCE: S 00°00'23" E, A DISTANCE OF 370.00', THENCE: S 89°59'37" W, A DISTANCE OF 7.11', THENCE: S 00°00'23" E, A DISTANCE OF 135.00', THENCE: N 89°59'37" E, A DISTANCE OF 3.00', THENCE: S 00°00'23" E, A DISTANCE OF 135.00', THENCE: N 89°59'37" E, A DISTANCE OF 20.83', THENCE: S 00°00'23" E, A DISTANCE OF 185.00', THENCE: S 00°00'00" E, A DISTANCE OF 365.45' TO A POINT ON THE SOUTH LINE OF SAID S-1/2 SW-1/4, THENCE: N 90°00'00" W, A DISTANCE OF 773.96' TO A POINT 175.00' EAST OF THE SW CORNER OF SAID S-1/2 SW-1/4, THENCE: N 00°21'14" W, AND PARALLEL WITH THE WEST LINE OF SAID S-1/2 SW-1/4, A DISTANCE OF 200.00', THENCE: N 90°00'00" W, AND PARALLEL WITH THE SOUTH LINE OF SAID S-1/2 SW-1/4, A DISTANCE OF 175.00' TO THE POINT OR PLACE OF BEGINNING. SAID DESCRIBED TRACT CONTAINS 27.77 ACRES MORE OR LESS.

COUNTY TREASURER'S CERTIFICATE I, DO HEREBY CERTIFY THAT I AM THE DULY ELECTED, QUALIFIED, AND ACTING COUNTY TREASURER OF WAGONER COUNTY, STATE OF OKLAHOMA, THAT THE RECORDS OF SAID COUNTY SHOW ALL TAXES ARE PAID FOR THE YEAR 1979 AND ALL PRIOR YEARS ON THE LAND SHOWN ON THE ANNEXED MAP OR PLAT OF RIDGEWAY HEIGHTS I, WAGONER COUNTY, OKLAHOMA, THAT THE REQUIRED STATUTORY SECURITY HAS BEEN DEPOSITED IN THE OFFICE OF THE COUNTY TREASURER GUARANTEEING THE PAYMENT OF THE CURRENT YEAR'S TAXES. IN WITNESS WHEREOF SAID COUNTY TREASURER HAS CAUSED THIS INSTRUMENT TO BE EXECUTED AT WAGONER COUNTY, OKLAHOMA, THIS DAY OF January, 1980. Ruby M. Roberts, County Treasurer



Robert L. McCutchan REGISTERED LAND SURVEYOR #153

I, the undersigned, the duly qualified and acting County Treasurer, of Wagoner County, Wagoner, Oklahoma, hereby certify that according to the 1979 tax rolls the taxes on the above description are paid. Ruby M. Roberts, County Treasurer

MAPCO ENGINEERING CORPORATION 2500 S. BROADWAY 348-0550 EDMOND, OKLAHOMA 73034