

AMENDED PLAT
RED BIRD
 WAGONER COUNTY
 OKLAHOMA

Scale 1" = 200'

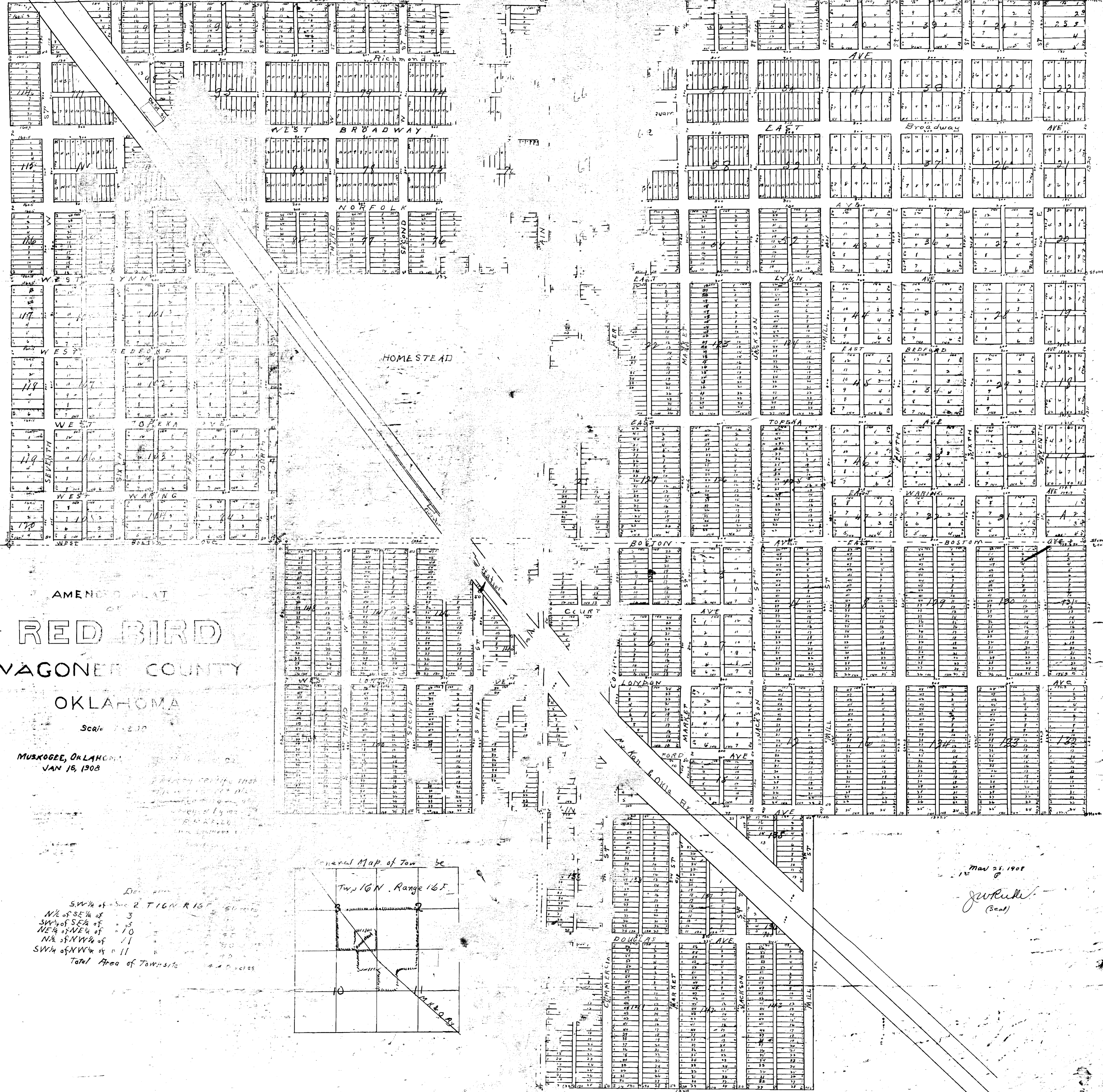
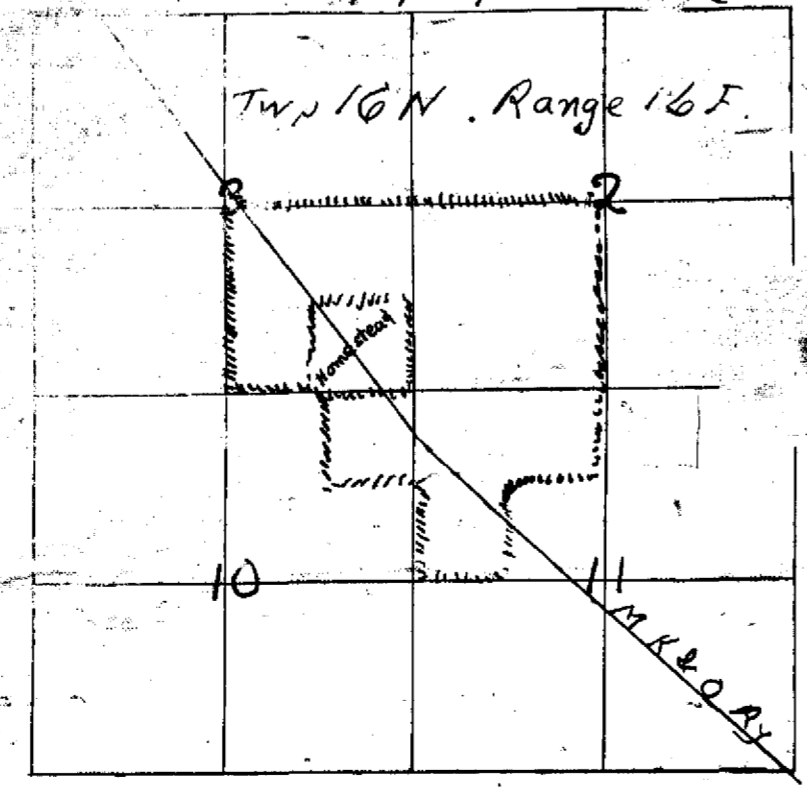
MUSKOGEE, OKLAHOMA
 JAN 15, 1908

Surveyed by me
 J. W. RULLI
 Surveyor

General Map of Town

Tw. 16 N. Range 16 E.

- SW 1/4 of Sec 2 T16N R16E
 - N 1/2 of SE 1/4 of 3
 - NE 1/4 of SE 1/4 of 10
 - N 1/2 of NW 1/4 of 11
 - SW 1/4 of NW 1/4 of 11
- Total Area of Town: site



May 28, 1908

J. W. RULLI
 (Seal)