

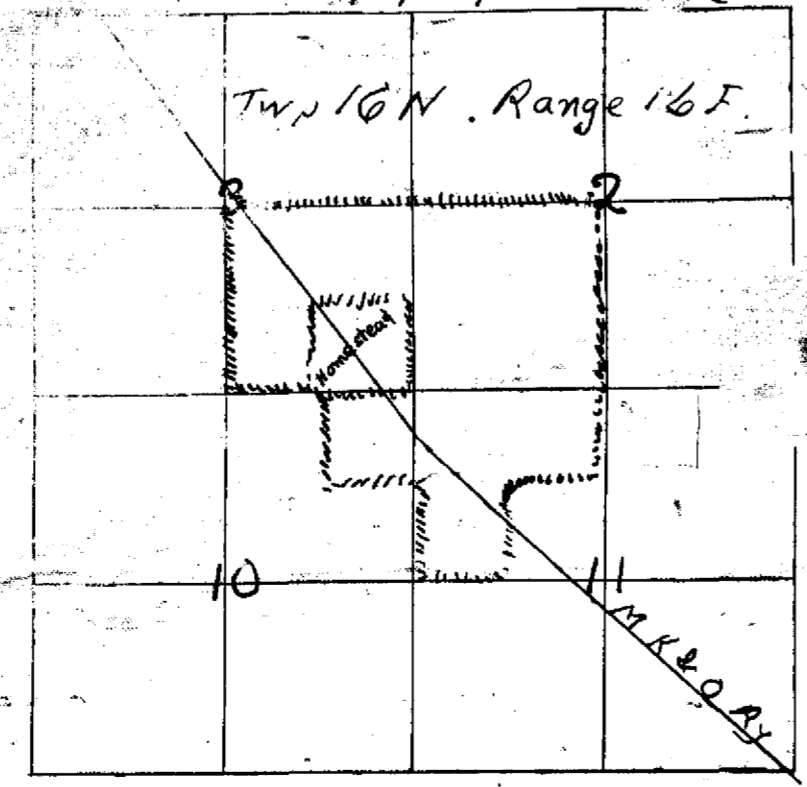
AMENDED PLAT  
**RED BIRD**  
 WAGONER COUNTY  
 OKLAHOMA

Scale 1" = 200'

MUSKOGEE, OKLAHOMA  
 JAN 15, 1908

Survey made by me  
 J. W. Riddle  
 Surveyor

General Map of Town



SW 1/4 of Sec 2 T16N R16E  
 NW 1/4 of SE 1/4 of 3  
 NE 1/4 of NE 1/4 of 10  
 NW 1/4 of NW 1/4 of 11  
 SW 1/4 of NW 1/4 of 11  
 Total Area of Town: site

May 28, 1908

J. W. Riddle  
 (Seal)

