

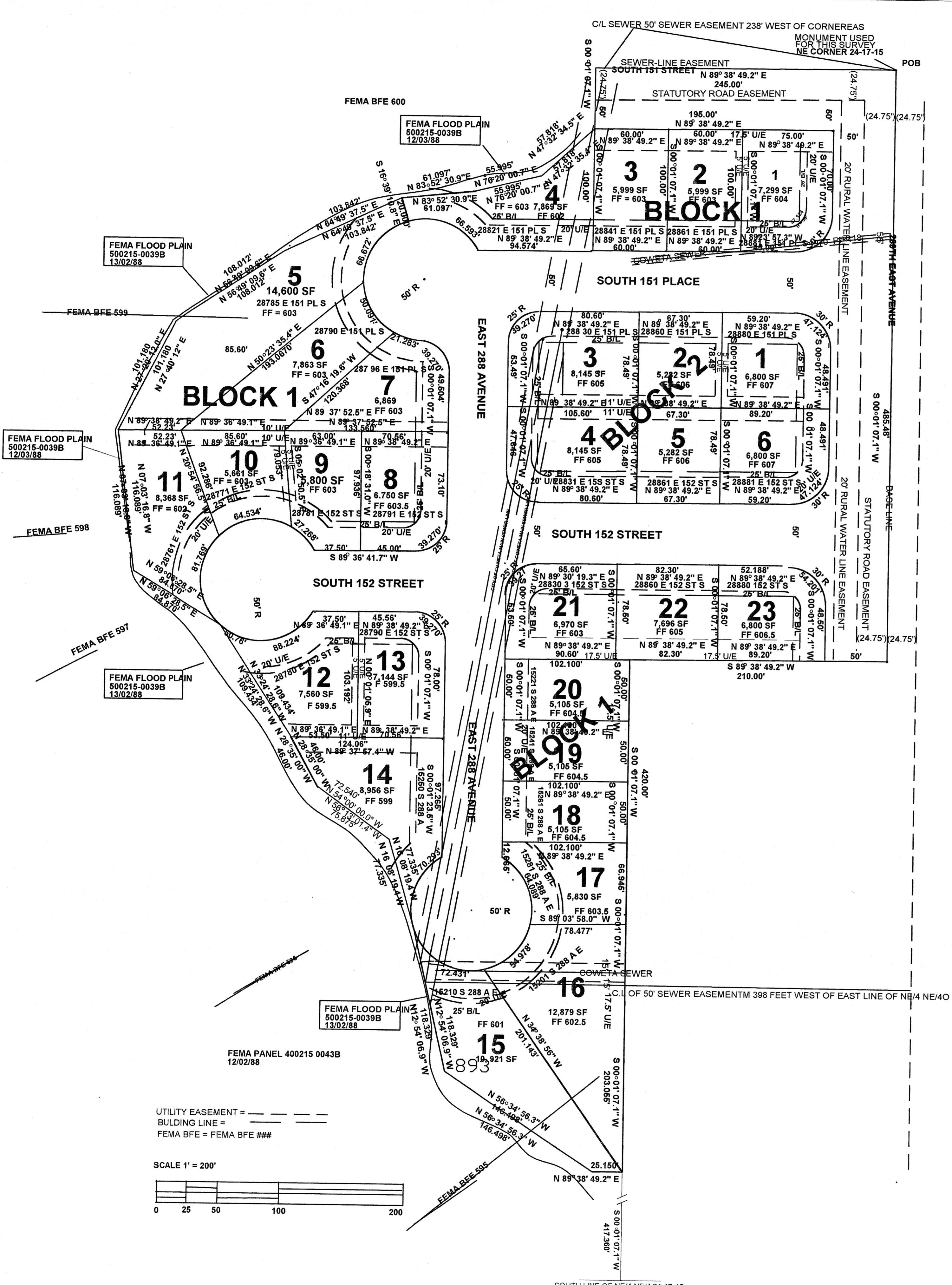
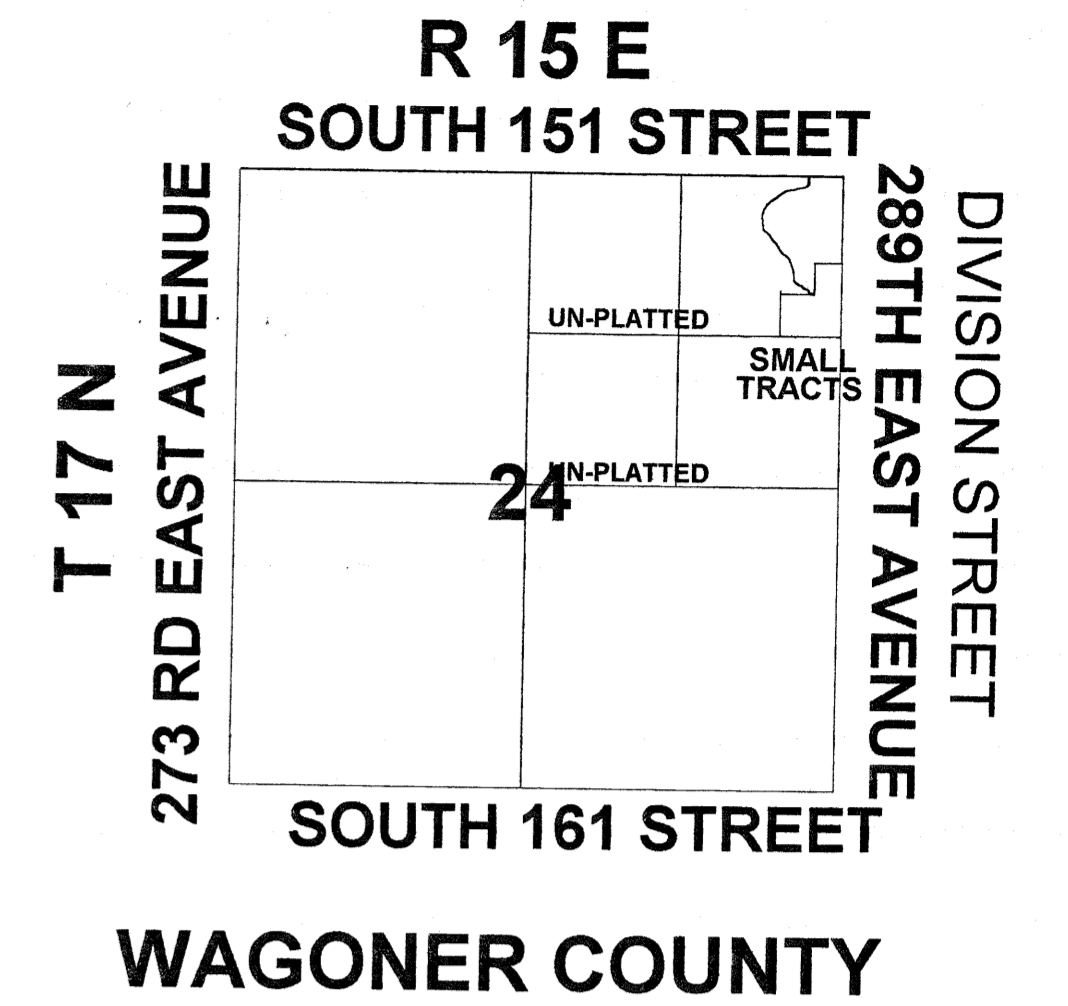
RE-PLAT OF The PARK at Coweta MARCH 3, 2005

REPLACES THE PARK AT COWETA FILED IN
 PLAT BOOK 1481, PAGE 188

2 BLOCKS, 29 LOTS
 7.49 ACRES, MORE OR LESS

Beginning at the NE corner of the NE/4 NE/4 of Section 24, Township 17 North, Range 15 East of the Indian Base and Meridian, County of Wagoner, State of Oklahoma:
 Thence S 09° 01' 07.1" W a distance of 485.48 feet, thence
 S 89° 38' 49.2" W a distance of 210.00 feet, thence
 S 00° 01' 07.1" W a distance of 420.00 feet, thence
 S 89° 38' 49.2" W a distance of 25.150 feet, thence
 N 56° 34' 56.3" W a distance of 146.498 feet, thence
 N 12° 54' 06.9" W a distance of 118.329 feet, thence
 N 16° 08' 19.4" W a distance of 77.335 feet, thence
 N 54° 00' 00.0" W a distance of 72.540 feet, thence
 N 28° 35' 00.0" W a distance of 46.000 feet, thence
 N 33° 24' 28.6" W a distance of 109.434 feet, thence
 N 59° 06' 28.5" W a distance of 116.089 feet, thence
 N 07° 03' 16.8" W a distance of 101.180 feet, thence
 N 27° 20' 12.0" E a distance of 101.180 feet, thence
 N 56° 49' 09.6" E a distance of 108.812 feet, thence
 N 64° 49' 37.5" E a distance of 103.842 feet, thence
 N 83° 52' 30.9" E a distance of 61.097 feet, thence
 N 76° 20' 00.7" E a distance of 55.995 feet, thence
 N 47° 32' 34.5" E a distance of 57.815 feet, thence
 N 00° 01' 07.1" E a distance of 50 feet, thence
 N 89° 38' 49.2" E a distance of 245.000 feet to the point of beginning, containing 7.49 acres, more or less

And that the owner have caused the same to be surveyed and platted as The RE-PLAT of The PARK at Coweta, an addition to the City of Coweta.



UTILITY EASEMENT = ---
 BUILDING LINE = - - -
 FEMA BFE = FEMA BFE ###

SCALE 1" = 200'

Certified True Copy
 CAROLYN KUSLER, COUNTY CLERK
 Wagoner County, Okla.
 By: *Carolyn Kusler*
 DEPUTY