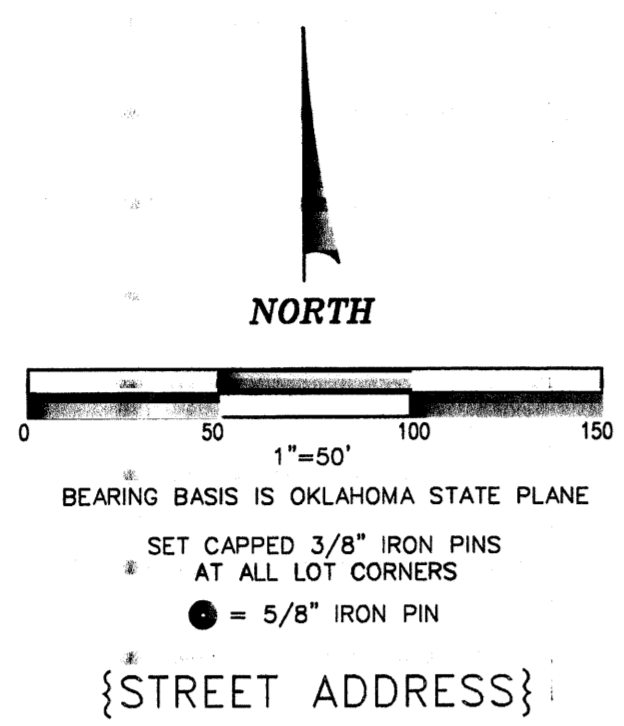
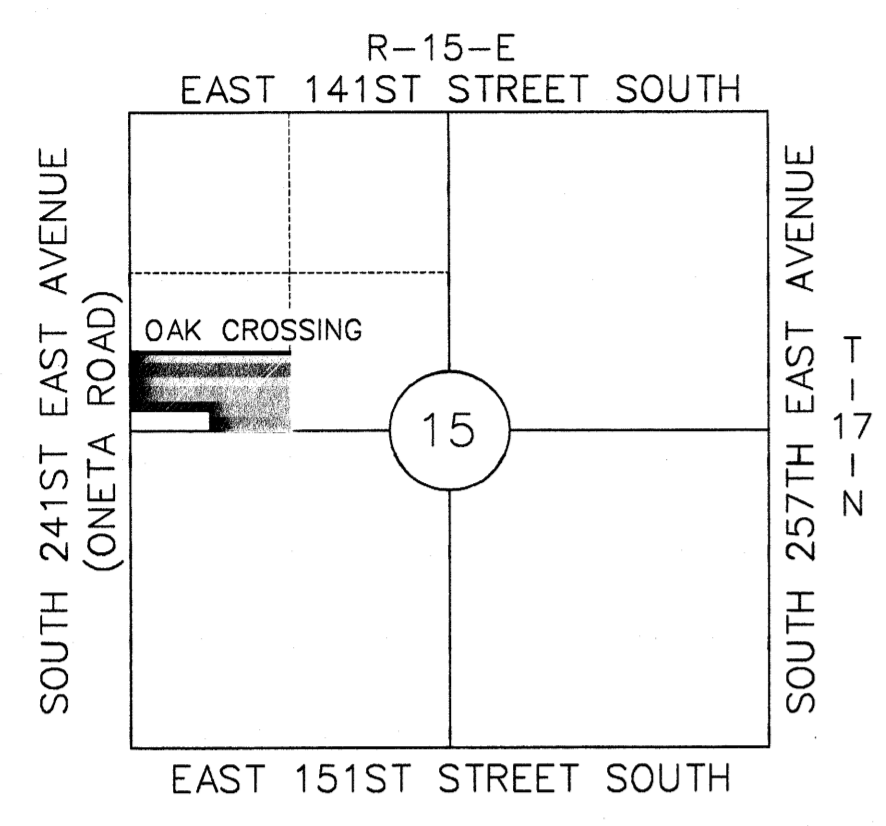
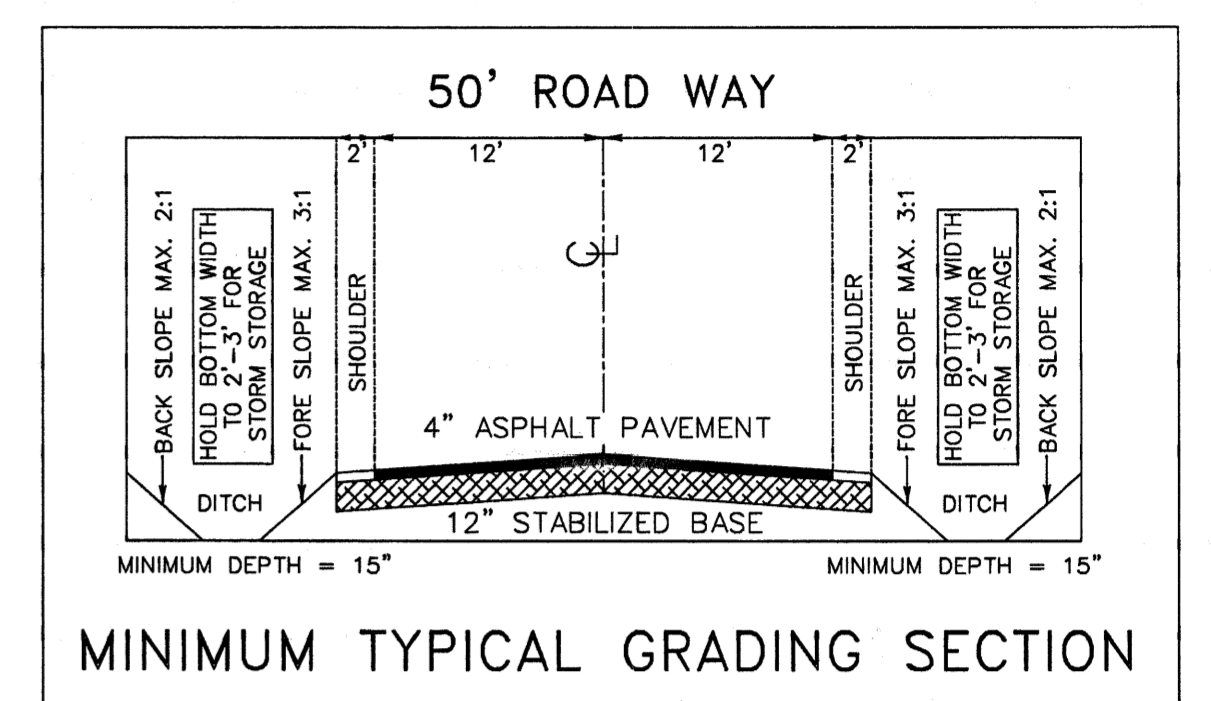


**Capital Surveying Inc.**  
MEMBER ACSM OSLS  
2240 South 283rd East Avenue  
Broken Arrow, Oklahoma 74014 FAX (918) 266-9862

# OAK CROSSING

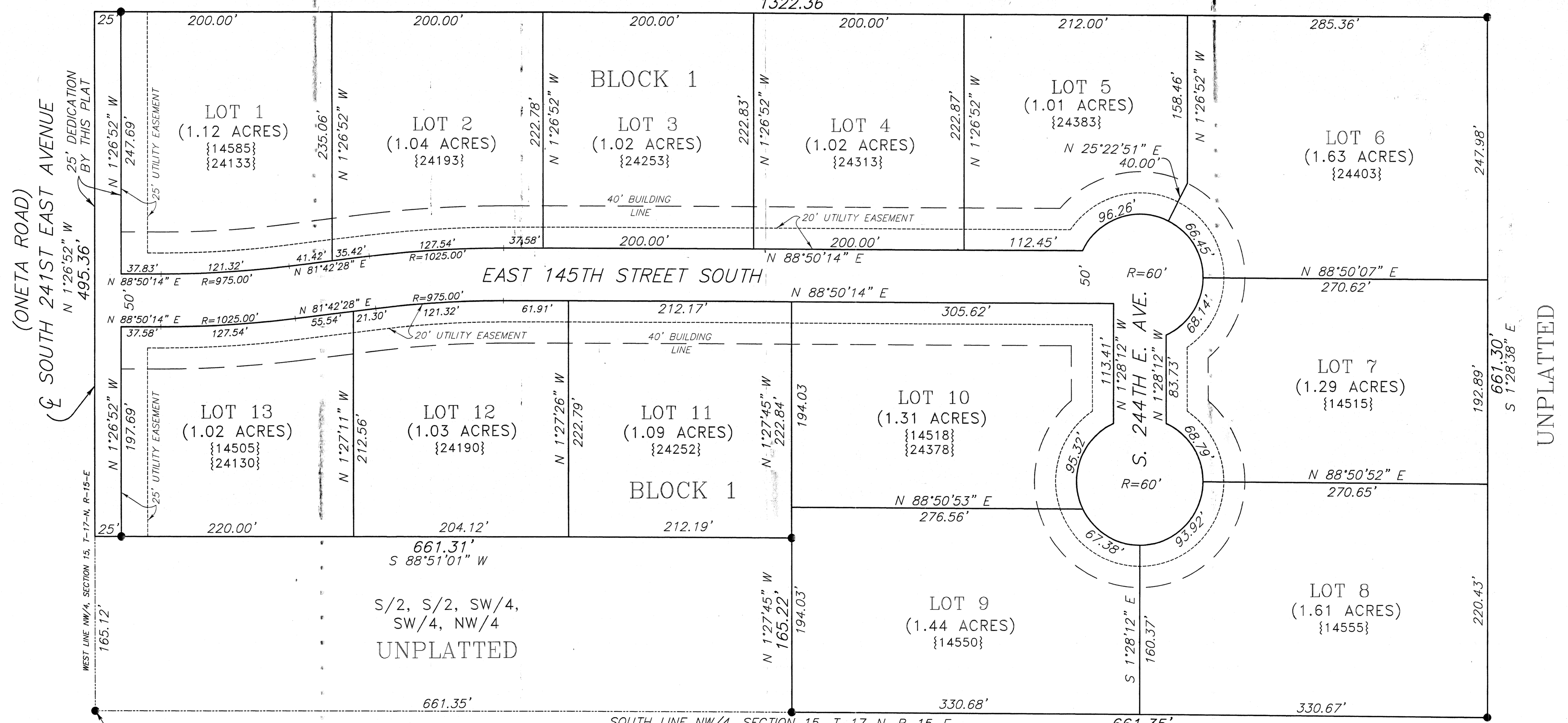
A SUBDIVISION OF THE SOUTH HALF (S/2) OF THE SOUTHWEST QUARTER (SW/4) OF THE NORTHWEST QUARTER (NW/4) LESS THE SOUTH 1/2 OF THE SOUTH 1/2 OF THE SW/4 OF THE SW/4 OF THE NW/4 OF SECTION FIFTEEN (15), TOWNSHIP SEVENTEEN (17) NORTH, RANGE FIFTEEN (15) EAST OF THE INDIAN BASE AND MERIDIAN, WAGONER COUNTY, STATE OF OKLAHOMA, ACCORDING TO THE U.S. GOVERNMENT SURVEY THEREOF.

OWNER: RELIABLE DEVELOPERS, INC.  
ENGINEER: GEORGE E. DAY, JR. P.E.



## UNPLATTED

N 88°49'26" E  
1322.36'



SOUTHWEST CORNER NW/4,  
SECTION 15, T-17-N, R-15-E

ROADS WILL BE  
MAINTAINED BY  
WAGONER COUNTY

## UNPLATTED

CERTIFIED TRUE COPY  
JERRY FIELDS COUNTY CLERK  
Wagoner County, Okla.  
By: *Sharon K. Steeman*  
DEPUTY