

= VACATED =

Book 698 PAGE 780 (7-11-86)

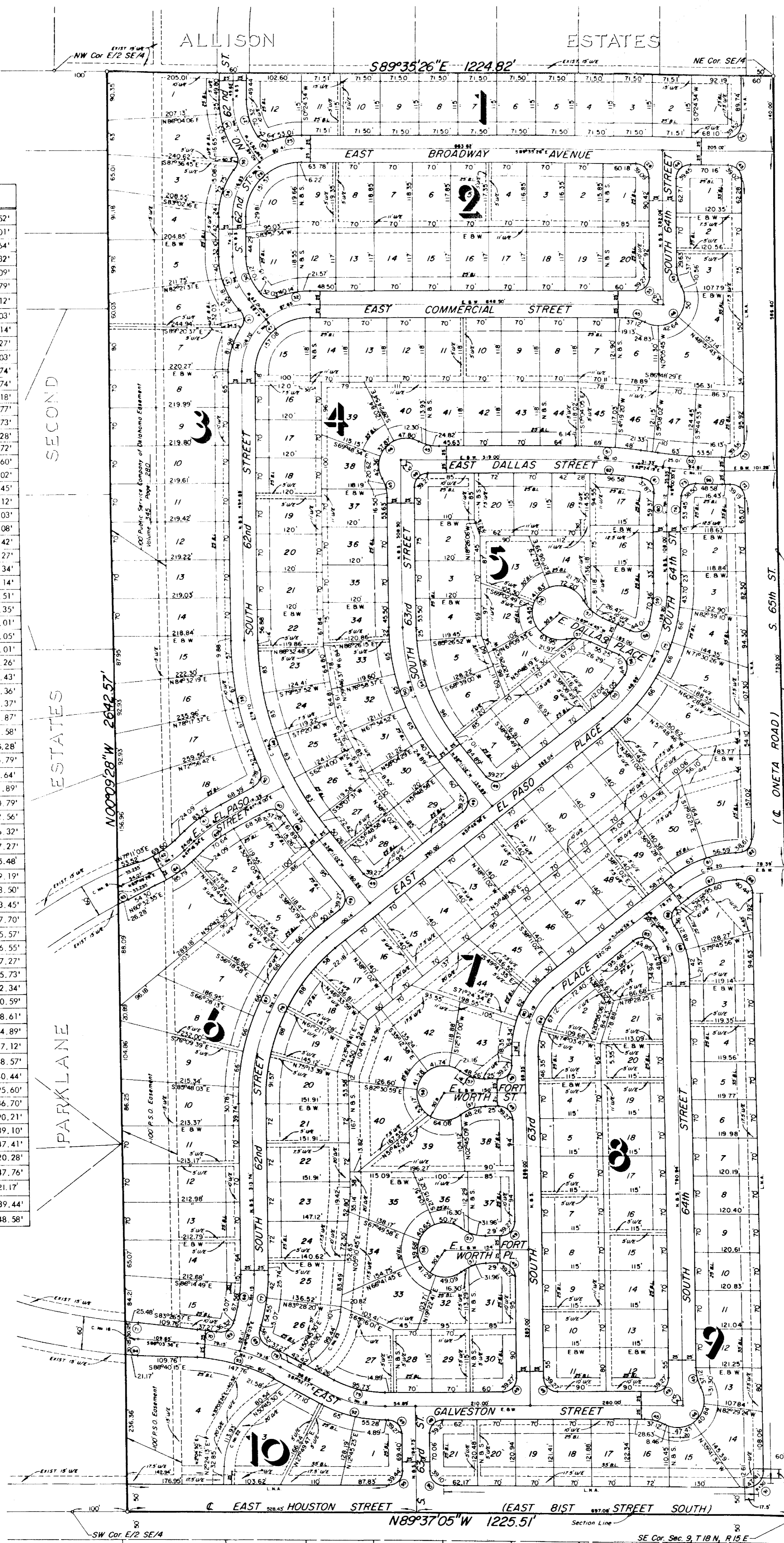
OAKLANE

AN ADDITION TO THE CITY OF BROKEN ARROW, OKLAHOMA,
A SUBDIVISION OF A PART OF THE EAST HALF (E/2) OF THE SOUTHEAST QUARTER (SE/4) OF
SECTION 9, TOWNSHIP 18 NORTH, RANGE 15 EAST OF THE INDIAN BASE AND MERIDIAN, WAGONER
COUNTY, OKLAHOMA.

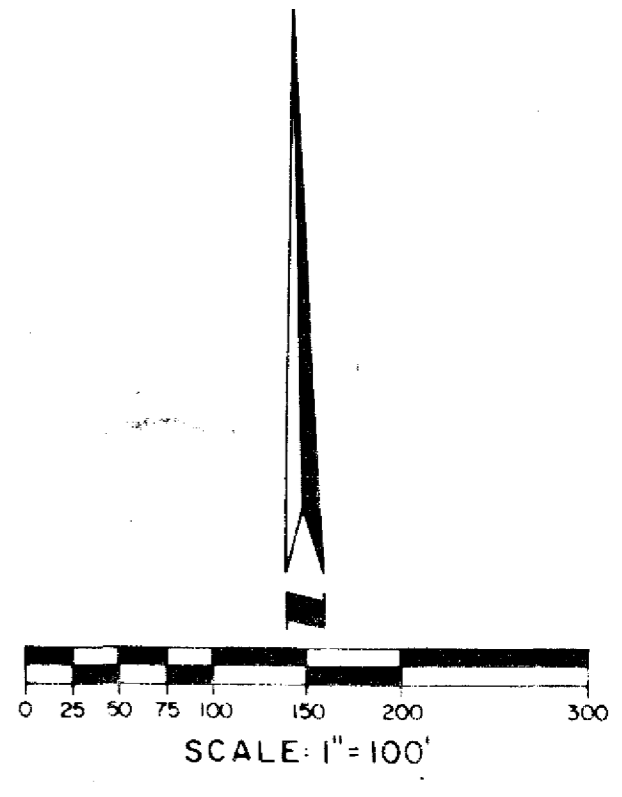
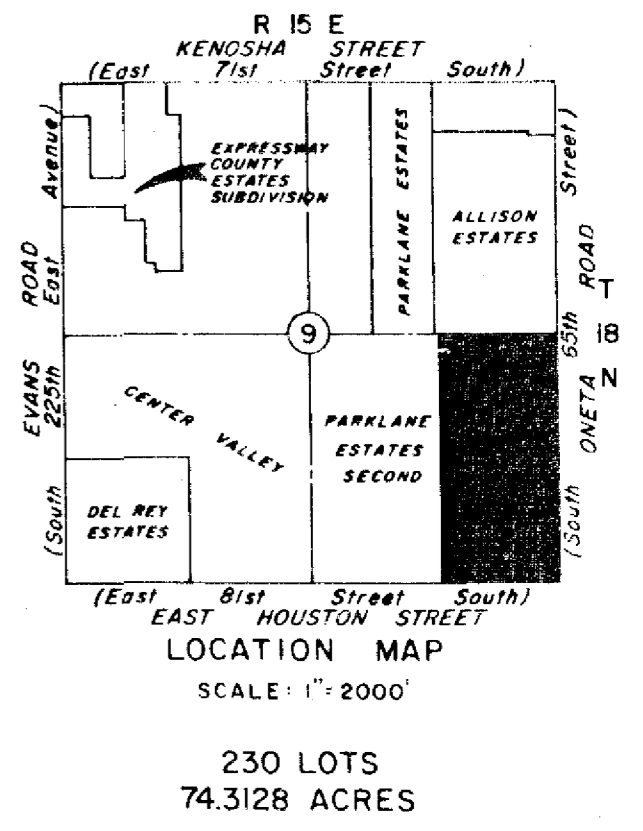
STATE OF OKLAHOMA
WAGONER COUNTY
FILED OR RECORDED
1986 NOV 21 PM 3:24
JERRY FIELDS
COUNTY CLERK

PROPERTY LINE CURVE DATA

Curve No.	Δ	R	L
24	90°34'56"	25'	39.52'
25	20°14'52"	150'	53.01'
26	74°48'00"	25'	32.64'
27	35°02'12"	115'	70.32'
28	89°35'26"	25'	39.09'
29	90°24'34"	100'	157.79'
30	40°10'29"	100'	70.12'
31	73°23'54"	25'	32.03'
32	23°34'23"	150'	61.14'
33	90°00'00"	25'	39.27'
34	35°46'38"	165'	103.03'
35	72°43'51"	25'	31.74'
36	36°57'13"	150'	96.74'
37	40°10'29"	150'	105.18'
38	33°13'25"	150'	85.77'
39	23°09'56"	602.83'	243.73'
40	85°25'56"	25'	37.28'
41	14°59'24"	320'	83.72'
42	18°32'54"	215'	69.60'
43	89°25'04"	25'	39.02'
44	90°24'34"	25'	39.45'
45	28°21'28"	75'	37.12'
46	146°42'56"	50'	128.03'
47	90°00'00"	100'	157.08'
48	38°11'02"	552.83'	368.42'
49	90°00'00"	25'	39.27'
50	38°11'02"	386.14'	257.34'
51	7°35'41"	928.973'	123.14'
52	7°35'41"	878.973'	116.51'
53	90°10'22"	25'	39.35'
54	38°11'02"	336.14'	224.01'
55	16°11'47"	290.243'	82.05'
56	100°51'56"	25'	44.01'
57	36°52'12"	75'	48.26'
58	253°44'24"	50'	221.43'
59	13°53'19"	290.243'	70.36'
60	4°55'00"	691.82'	59.37'
61	86°47'44"	25'	37.87'
62	8°07'16"	878.973'	124.58'
63	3°06'18"	485'	26.28'
64	18°32'54"	265'	85.79'
65	14°59'26"	270'	70.64'
66	5°52'57"	602.83'	61.89'
67	51°48'58"	410'	370.79'
68	16°02'03"	295'	82.56'
69	83°14'37"	25'	36.32'
70	5°20'16"	400'	37.27'
71	1°15'50"	1155'	25.48'
72	89°49'38"	25'	39.19'
73	88°13'30"	25'	38.50'
74	4°46'16"	641.82'	53.45'
75	51°48'58"	340.243'	307.70'
76	51°48'58"	360'	325.57'
77	16°02'03"	345'	96.55'
78	5°20'21"	400'	37.27'
79	28°07'43"	195'	55.73'
80	51°48'58"	179.51'	162.34'
81	36°29'55"	205'	130.59'
82	88°29'15"	25'	38.61'
83	102°53'01"	25'	44.89'
84	51°48'58"	129.51'	117.12'
85	25°18'01"	110'	48.57'
86	92°40'21"	25'	40.44'
87	35°20'19"	155'	95.60'
88	84°07'12"	25'	36.70'
89	32°18'14"	160'	90.21'
90	89°37'05"	25'	39.10'
91	90°33'17"	30'	47.41'
92	28°07'43"	245'	120.28'
93	24°11'19"	350'	147.76'
94	0°59'54"	1215'	21.17'
95	90°22'55"	25'	39.44'
96	2°59'46"	928.973'	48.58'



APPROVED 9-6-86 by the City
Council of the City of Broken Arrow,
Oklahoma.
Mayor Nick Hood
City Clerk Kerry Spulack



OWNER:
ROBSON DEVELOPMENT CO.
Route 1, Box 119
Catoosa, Oklahoma 74015
Tel. (918) 266-2760

ENGINEER:
COX & ASSOCIATES, INC.
1323 South Baltimore
Tulsa, Oklahoma 74119
Tel. (918) 583-7588

LEGEND
BL - Denotes Building Line
U/E - Denotes Utility Easement
D/E - Denotes Drainage Easement
W.L. Esm't - Denotes Water Line Easement
S.S. Esm't - Denotes Sanitary Sewer Easement
○ - Denotes 3/8" Iron Pin
NOTE: All Lines Not Marked are North-South or East-West

CENTERLINE CURVE DATA

Curve No.	Δ	R	T	L
1	36°26'57"	140'	46.096'	89.06'
2	90°24'34"	125'	125.90'	197.24'
3	40°10'29"	125'	45.712'	87.65'
4	90°00'00"	125'	125'	196.35'
5	38°11'02"	577.83'	200.00'	385.09'
6	14°59'26"	295'	38.81'	77.18'
7	18°32'54"	240'	39.19'	77.70'
8	1°24'29"	515'	6.70'	12.66'
9	38°11'02"	361.14'	125.00'	240.68'
10	7°35'41"	903.973'	60.00'	119.82'
11	7°35'41"	903.973'	60.00'	119.82'
12	6°00'33"	666.82'	35.00'	69.94'
13	51°48'58"	315.243'	153.13'	285.09'
14	51°48'58"	385.00'	187.01'	348.18'
15	16°02'03"	320'	45.07'	89.55'
16	1°07'40"	1185'	11.66'	23.32'
17	24°11'19"	375'	80.35'	158.31'
18	28°07'43"	220'	55.11'	108.01'
19	51°48'58"	154.51'	75.05'	139.73'
20	38°11'02"	180'	62.30'	119.96'
21	38°11'02"	135'	46.73'	89.97'
22	48°21'17"	135'	60.61'	113.93'
23	45°34'45"	125'	52.52'	99.44'

PLAT NO. PAGE NO.
1 OF 2