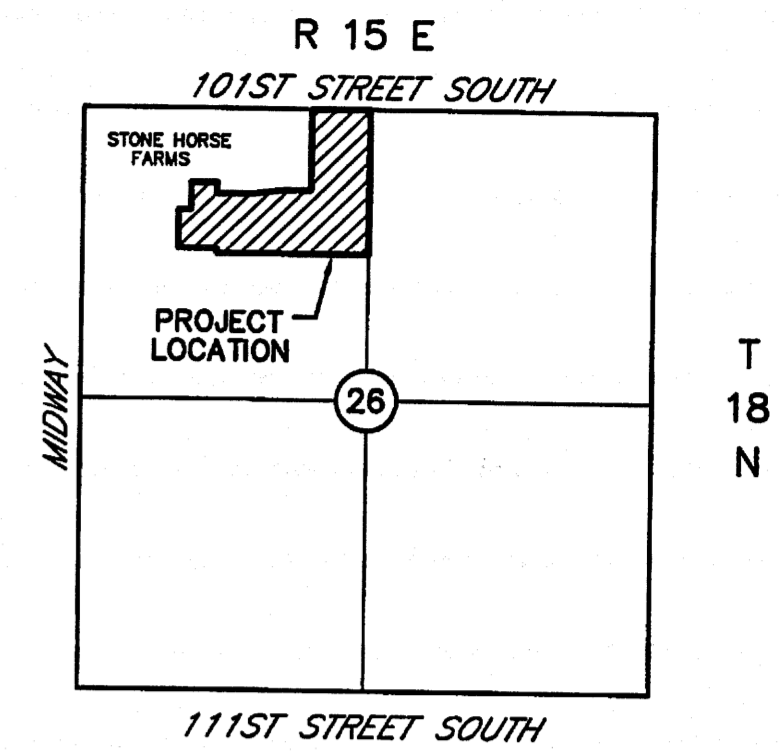


NATURAL SPRINGS II AMENDED

A REPLAT OF BLOCKS 4&5 AND LOTS 2-16 OF BLOCK 1 AND LOTS 2,3,4 & 5 OF BLOCK 3 NATURAL SPRINGS II

AN ADDITION TO THE COUNTY OF WAGONER, OKLAHOMA
A PART OF THE N/2 NW/4 OF SECTION 26, TOWNSHIP 18 NORTH,
RANGE 15 EAST, WAGONER COUNTY, OKLAHOMA



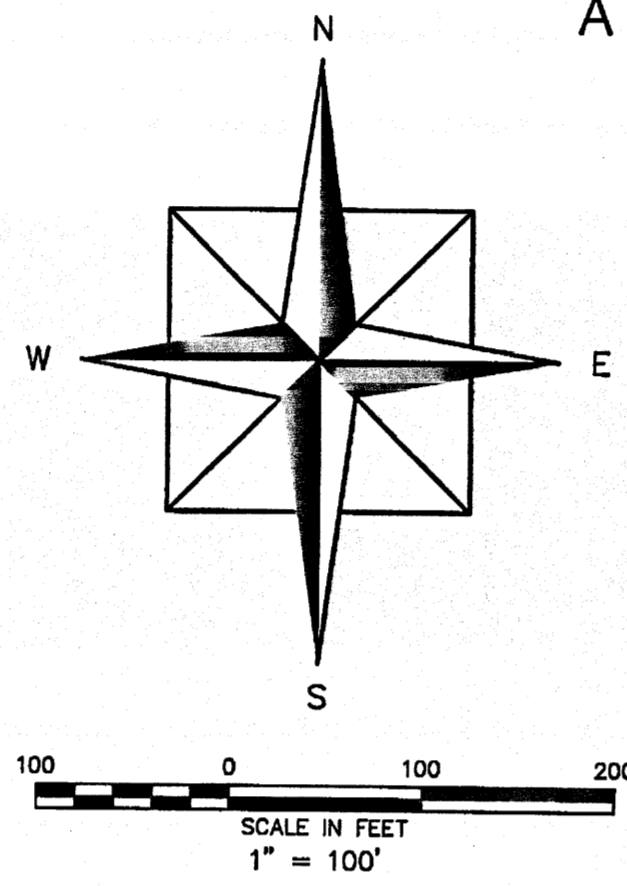
LOCATION MAP
1,170,822 SQUARE FEET
26.87 ACRES
26 LOTS

OWNER
NATURAL SPRINGS II, LLC
26601 E. 101ST STREET
BROKEN ARROW, OKLAHOMA 74014
PHONE: (918) 486-2329

OWNER
GADA BUILDERS INC.
AN OKLAHOMA CORPORATION
25900 E. 81ST STREET
BROKEN ARROW, OKLAHOMA 74014
PHONE: (918) 357-2886

OWNER
JOHN S. & LISA G. COOPER
26381 102ND STREET SOUTH
BROKEN ARROW, OKLAHOMA

ENGINEER/SURVEYOR
TUTTLE & ASSOCIATES, INC.
9718 E. 55TH PL.
TULSA, OKLAHOMA 74146
PHONE: (918) 663-5567
CERTIFICATE OF AUTHORITY CA 465
EXPIRATION 6-30-07

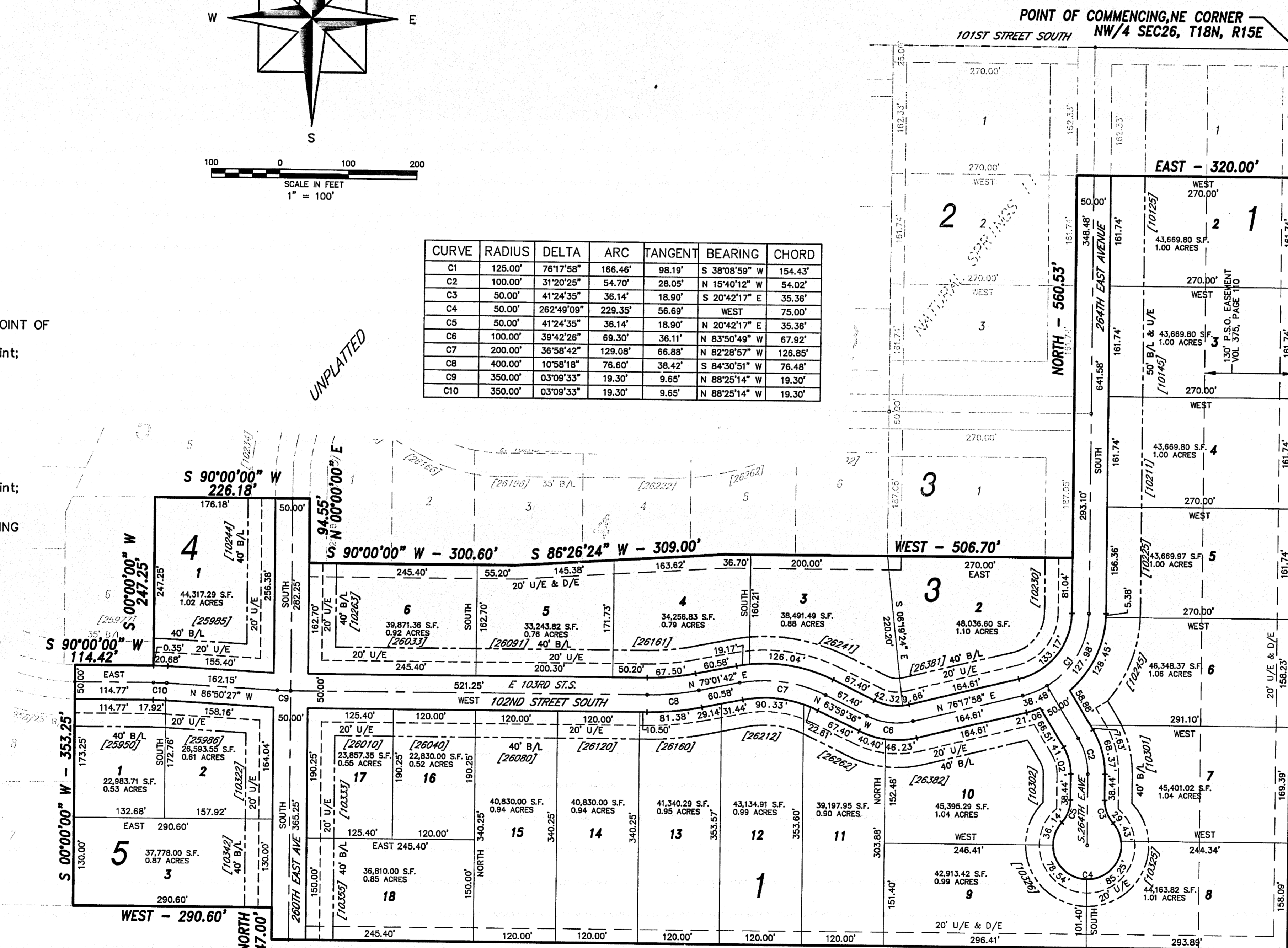


LEGAL DESCRIPTION
NATURAL SPRINGS II AMENDED

A replat of all of blocks 4 and 5 and lots 2 thru 16 block 1, lots 2 thru 5 block 3, Natural Springs II located in the N/2 NW/4 of Section 26, Township 18 North, Range 15 East of the Indian Base and Meridian, Wagoner county, State of Oklahoma being more particularly described as follows:

COMMENCING at the NE corner NW/4 of said Section 26;
THENCE South 0°00'09" East, a distance of 187.33 feet to the POINT OF BEGINNING;
THENCE South 0°00'09" East, a distance of 1132.67 feet to a point;
THENCE West, a distance of 1485.70 feet to a point;
THENCE North, a distance of 47.00 feet to a point;
THENCE West, a distance of 290.60 feet to a point;
THENCE North, a distance of 353.25 feet to a point;
THENCE East, a distance of 114.42 feet to a point;
THENCE North, a distance of 247.25 feet to a point;
THENCE East, a distance of 226.18 feet to a point;
THENCE South, a distance of 94.55 feet to a point;
THENCE East, a distance of 300.60 feet to a point;
THENCE North 86°26'24" East, a distance of 309.00 feet to a point;
THENCE East, a distance of 506.70 feet to a point;
THENCE North, a distance of 560.53 feet to a point;
THENCE East, a distance of 320.00 feet to the POINT OF BEGINNING containing 1,170,822 square feet or 26.87 acres.

CURVE	RADIUS	DELTA	ARC	TANGENT	BEARING	CHORD
C1	125.00'	76°17'58"	166.46'	98.19'	S 38°08'59" W	154.43'
C2	100.00'	31°20'25"	54.70'	28.05'	N 15°40'12" W	54.02'
C3	50.00'	41°24'35"	36.14'	18.90'	S 20°42'17" E	35.36'
C4	50.00'	262°49'09"	229.35'	56.69'	WEST	75.00'
C5	50.00'	41°24'35"	36.14'	18.90'	N 20°42'17" E	35.36'
C6	100.00'	39°42'28"	69.30'	36.11'	N 83°50'49" W	67.92'
C7	200.00'	36°58'42"	129.08'	66.88'	N 82°28'57" W	126.85'
C8	400.00'	10°58'18"	76.60'	38.42'	S 84°30'51" W	76.48'
C9	350.00'	03°09'33"	19.30'	9.65'	N 88°25'14" W	19.30'
C10	350.00'	03°09'33"	19.30'	9.65'	N 88°25'14" W	19.30'



- LEGEND**
- FI IP O FOUND IRON PIN
 - OH P OVERHEAD POWER
 - PP P POWER POLE
 - - - FL DITCH
 - TELE PED.
 - ⊗ GAS VALVE
 - N NORTH
 - S SOUTH
 - E EAST
 - W WEST
 - B.L. BUILDING LINE
 - D/E DRAINAGE EASEMENT
 - U/E UTILITY EASEMENT
 - [12345] STREET ADDRESSES

THIS PLAT OF SURVEY MEETS THE OKLAHOMA MINIMUM STANDARDS FOR THE PRACTICE OF LAND SURVEYING AS ADOPTED BY THE OKLAHOMA STATE BOARD OF REGISTRATION FOR PROFESSIONAL ENGINEERS AND LAND SURVEYORS.
BASIS OF BEARINGS - NORTH SECTION LINE IS ASSUMED DUE WEST

ROADS WILL BE MAINTAINED BY WAGONER COUNTY

WAGONER COUNTY TREASURER
I, *Glenn Marshall*, TREASURER FOR THE COUNTY OF WAGONER, STATE OF OKLAHOMA, DO HEREBY STATE THAT ALL BACK TAXES HAVE BEEN PAID ON THE DECEASED PROPERTY.
DATE: 6/9/06
Glenn Marshall
WAGONER COUNTY TREASURER

ACCEPTANCE OF PLAT
BE IT RESOLVED BY THE WAGONER METROPOLITAN AREA PLANNING COMMISSION OF WAGONER COUNTY, STATE OF OKLAHOMA, THAT THE ABOVE SHOWN IS ACCEPTED, AND ADOPTED BY THE WAGONER METROPOLITAN AREA PLANNING COMMISSION.
APPROVED BY THE CHAIRMAN OF THE WAGONER METROPOLITAN AREA PLANNING COMMISSION OF WAGONER COUNTY, STATE OF OKLAHOMA
DATE: 6/9/06
Brenda Robertson
WAGONER METROPOLITAN AREA PLANNING COMMISSION

WAGONER COUNTY COMMISSION
BE IT RESOLVED BY THE WAGONER COUNTY BOARD OF COUNTY COMMISSIONERS, WAGONER COUNTY, STATE OF OKLAHOMA, THAT THE ABOVE SHOWN PLAT IS APPROVED.
APPROVED BY THE WAGONER COUNTY BOARD OF COMMISSIONERS WAGONER COUNTY, STATE OF OKLAHOMA
DATE: 6/9/06
Sam Taylor
CHAIRMAN, WAGONER COUNTY BOARD OF COUNTY COMMISSIONERS

CERTIFICATE OF WAGONER COUNTY CLERK
I, CAROLYN KUSLER, THE COUNTY CLERK OF WAGONER COUNTY, DO HEREBY NOW STATE THE SUBDIVISION CALLED NATURAL SPRINGS II AMENDED HAS BEEN FILED INTO WAGONER COUNTY RECORDS.
Carolyn Kusler
CAROLYN KUSLER, WAGONER COUNTY CLERK

DEPARTMENT OF ENVIRONMENTAL QUALITY
I CERTIFY I HAVE APPROVED THE APPLICATION AND PLAN FOR A PLAT OF A RESIDENTIAL DEVELOPMENT WHICH IS ON FILE AT THE WAGONER OFFICE OF THE DEPARTMENT OF ENVIRONMENTAL QUALITY, AND HEREBY APPROVE THIS PLAT FOR THE USE OF A PUBLIC WATER SYSTEM AND PRIVATE SEWAGE SYSTEMS.
DATE: JUN 06 2006
Chad Keller
CHAD KELLER
ENVIRONMENTAL SPECIALIST SUPERVISOR
OKLAHOMA DEPARTMENT OF ENVIRONMENTAL QUALITY

Certified True Copy
CAROLYN KUSLER, COUNTY CLERK
Wagoner County, Okla.
Sharon K. Fleeman