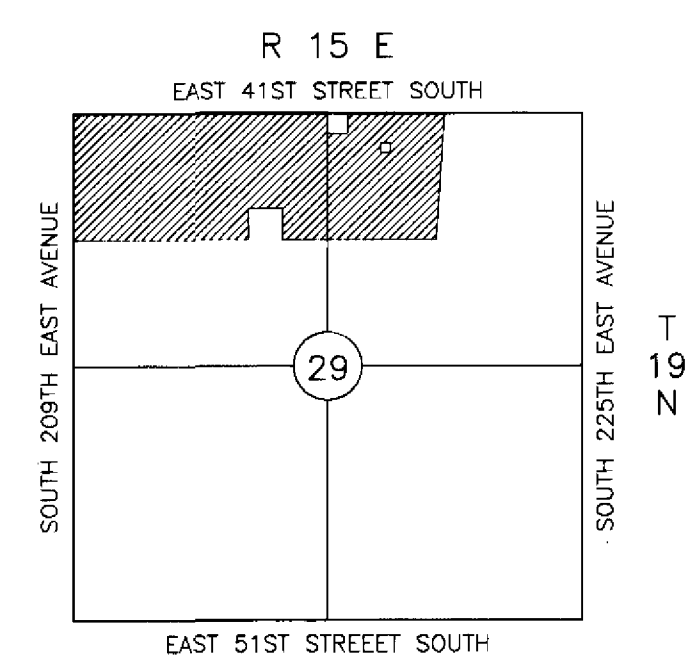
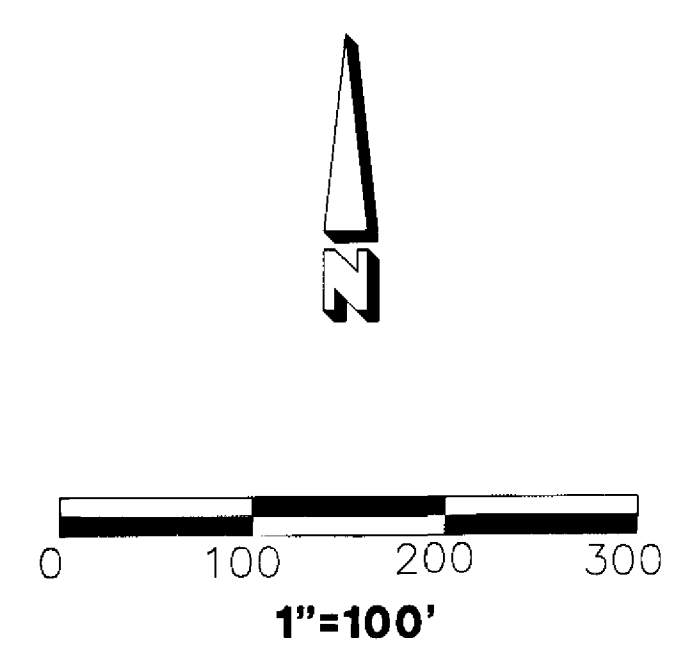


NEW TULSA ESTATES

AN ADDITION BEING PART OF THE N/2 OF THE NE/4 OF SECTION 29,
 TOWNSHIP 19 NORTH, RANGE 15 EAST OF THE I.B. & M., TOWN OF
 NEW TULSA, WAGONER COUNTY, STATE OF OKLAHOMA.



LOCATION MAP
 SCALE: 1"=2000'

SUBDIVISION CONTAINS:
 52 LOTS
 3 BLOCKS
 BLOCK 1 CONTAINS 24,524 ACRES
 BLOCK 2 CONTAINS 23,911 ACRES
 BLOCK 3 CONTAINS 20,363 ACRES
 TOTAL AREA FOR 52 LOTS AND 3 BLOCKS
 68,798 ACRES
 RESERVE AREAS CONTAIN 28.092 ACRES

- EASEMENT NOTES
- ① 50' EXPLORER PIPELINE EASEMENT, RECORDED IN VOLUME 414 AT PAGE 230.
 - ② 50' ONG EASEMENT, RECORDED IN VOLUME 256 AT PAGE 595, WITH PARTIAL RELEASE, RECORDED IN VOLUME 401 AT PAGE 231.
 - ③ 30' RIGHT-OF-WAY, RECORDED IN VOLUME 204 AT PAGE 228 AND VOLUME 291 AT PAGE 475, ASSIGNED TO WILLIAMS BROTHERS BY ASSIGNMENT RECORDED IN VOLUME 417 AT PAGE 117. THIS EASEMENT IS CONTAINED WITHIN THE PLATTED PIPELINE EASEMENT SHOWN HEREON.
 - ④ 50' WILLIAMS PIPELINE CO. EASEMENT, RECORDED IN BOOK 676 AT PAGE 71 AND PARTIAL RELEASE, RECORDED IN BOOK 675 AT PAGE 62.

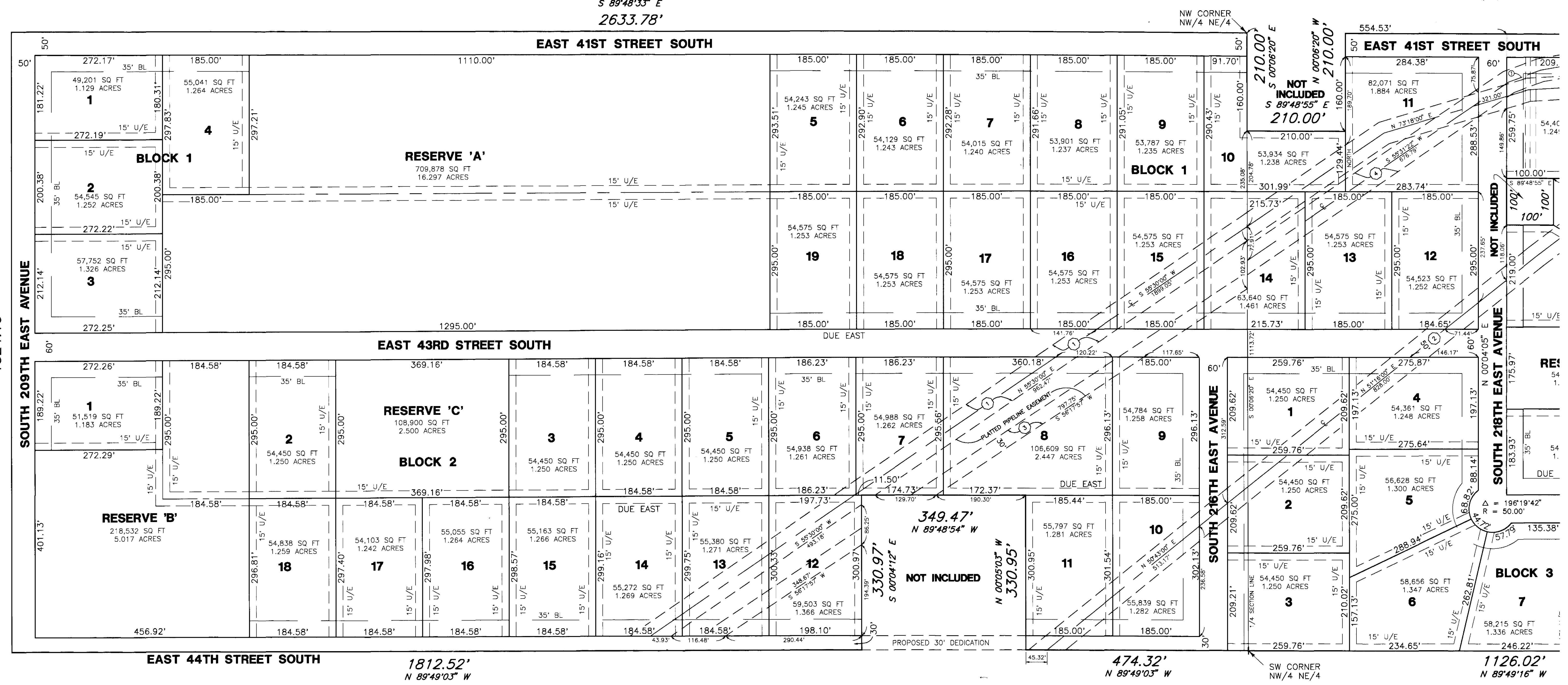
OWNER:
 SSI, INC. - L.L.C., AN OKLAHOMA CORPORATION
 DBA NEW TULSA ESTATES
 P.O. BOX 952
 BIXBY, OKLAHOMA 74008

SURVEYOR:
 WHITE SURVEYING COMPANY
 9936 EAST 55TH PLACE
 TULSA, OKLAHOMA 74146
 (918) 663-6924

I, the undersigned, the duly qualified and acting county Treasurer of Wagoner County, Oklahoma, hereby certify that according to the records of the tax rolls the taxes on the above description are paid.

Mary Sue Teader, County Treasurer
 Deputy

S 89°48'33" E
 2633.78'



N 00°00'28" E
 1324.10'

1812.52'
 N 89°49'03" W

474.32'
 N 89°49'03" W

1126.02'
 N 89°49'16" W