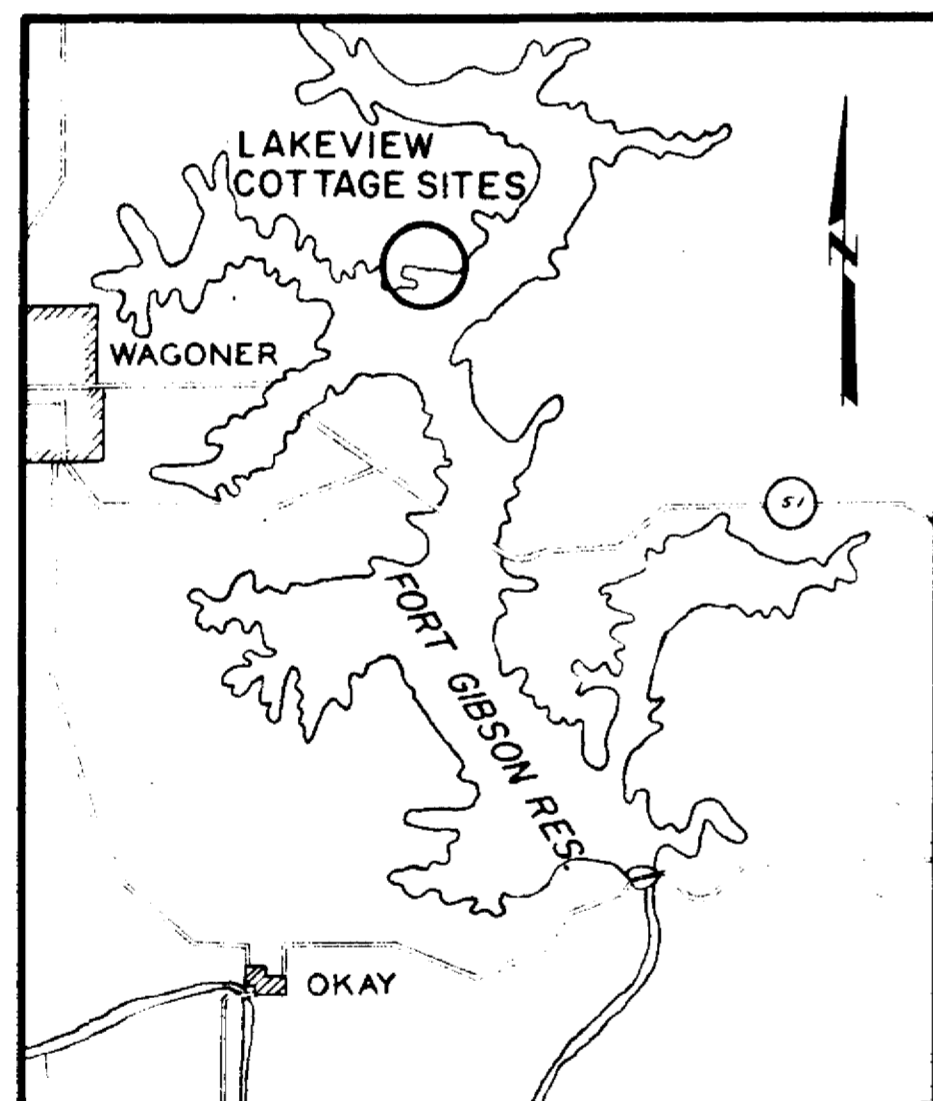
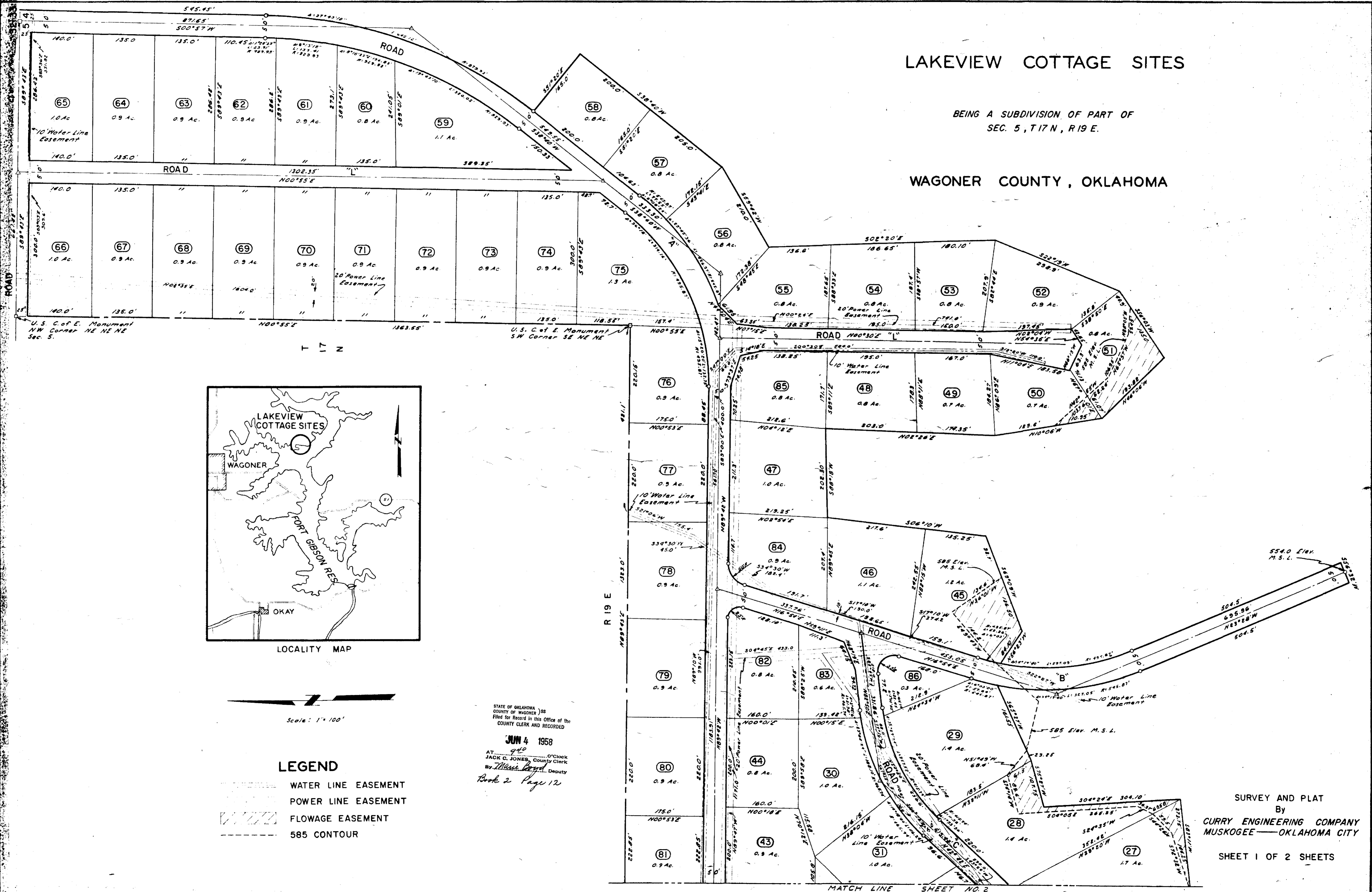


LAKEVIEW COTTAGE SITES

BEING A SUBDIVISION OF PART OF
SEC. 5, T 17 N, R 19 E.

WAGONER COUNTY, OKLAHOMA



LOCALITY MAP

Scale: 1" = 100'

LEGEND

- WATER LINE EASEMENT
- POWER LINE EASEMENT
- FLOWAGE EASEMENT
- 585 CONTOUR

STATE OF OKLAHOMA)
 COUNTY OF WAGONER)
 Filed for Record in the Office of the
 COUNTY CLERK AND RECORDED

JUN 4 1958

AT _____ O'Clock
 JACK C. JONES, County Clerk
 By *Thomas Boyd*, Deputy
 Book 2 Page 12

SURVEY AND PLAT
 By
CURRY ENGINEERING COMPANY
 MUSKOGEE—OKLAHOMA CITY

SHEET 1 OF 2 SHEETS

MATCH LINE SHEET NO. 2