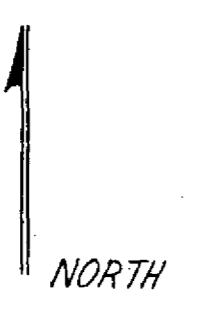
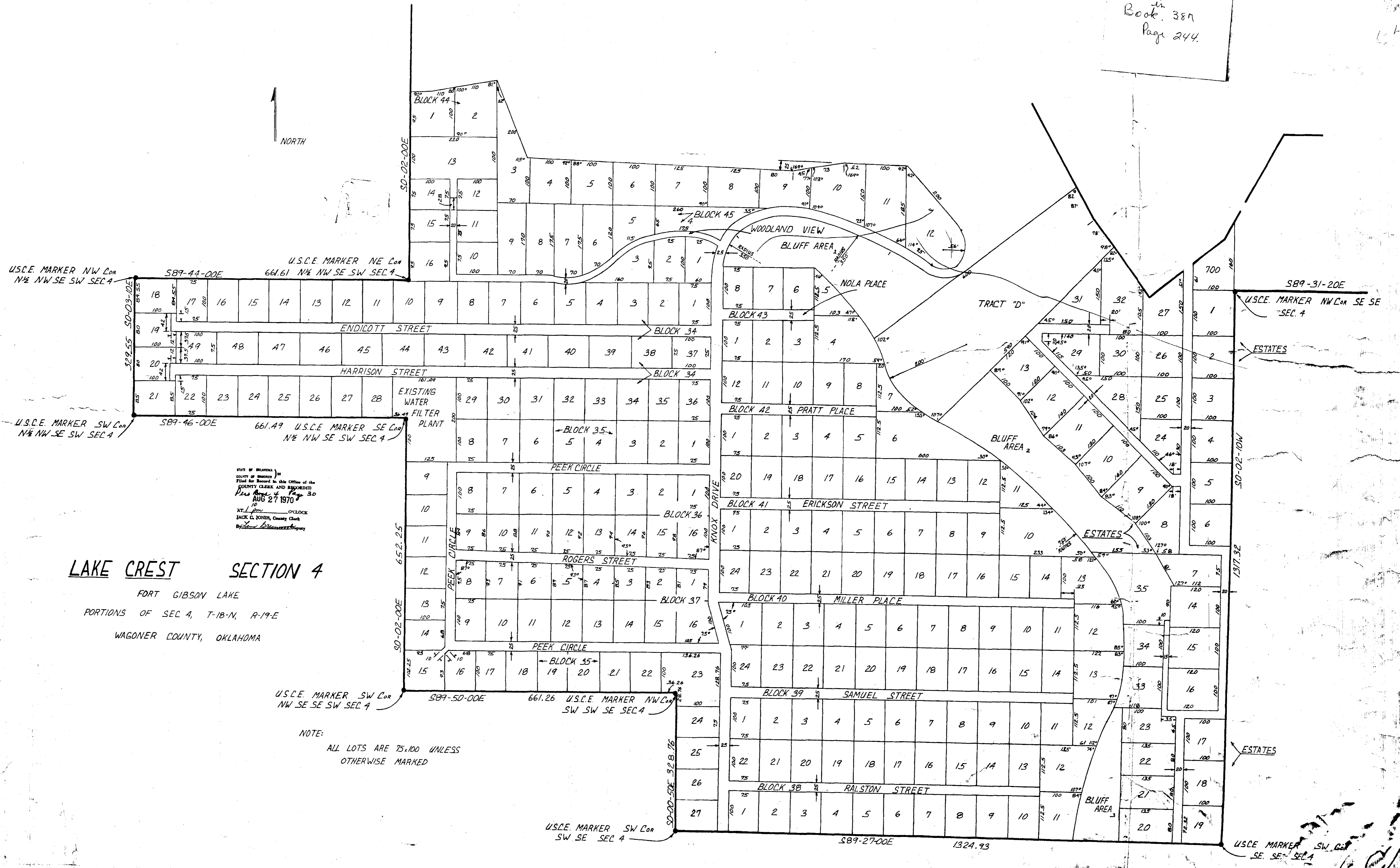


Passable
Restrictions
in
Book 387
Page 244.



U.S.C.E. MARKER NW Cor
N $\frac{1}{2}$ NW SE SW SEC 4

U.S.C.E. MARKER NE Cor
661.61 N $\frac{1}{2}$ NW SE SW SEC 4

U.S.C.E. MARKER SW Cor
N $\frac{1}{2}$ NW SE SW SEC 4

U.S.C.E. MARKER SE Cor
661.49 N $\frac{1}{2}$ NW SE SW SEC 4

U.S.C.E. MARKER SW Cor
NW SE SE SW SEC 4

STATE OF OKLAHOMA
COUNTY OF WAGONER
Filed for Record in this Office of the
COUNTY CLERK AND RECORDED
Page 30 of 30
AUG 27 1970
AT 10 O'CLOCK
JACK L. JONES, County Clerk
By _____

LAKE CREST SECTION 4

FORT GIBSON LAKE
PORTIONS OF SEC 4, T-18-N, R-19-E
WAGONER COUNTY, OKLAHOMA

U.S.C.E. MARKER SW Cor
NW SE SE SW SEC 4

U.S.C.E. MARKER NW Cor
SW SW SE SEC 4

NOTE:
ALL LOTS ARE 75.00 UNLESS
OTHERWISE MARKED

U.S.C.E. MARKER SW Cor
SW SE SEC 4

U.S.C.E. MARKER SW Cor
SE SE SEC 4

Handwritten notes and signatures in the top right corner, including 'LBM'.