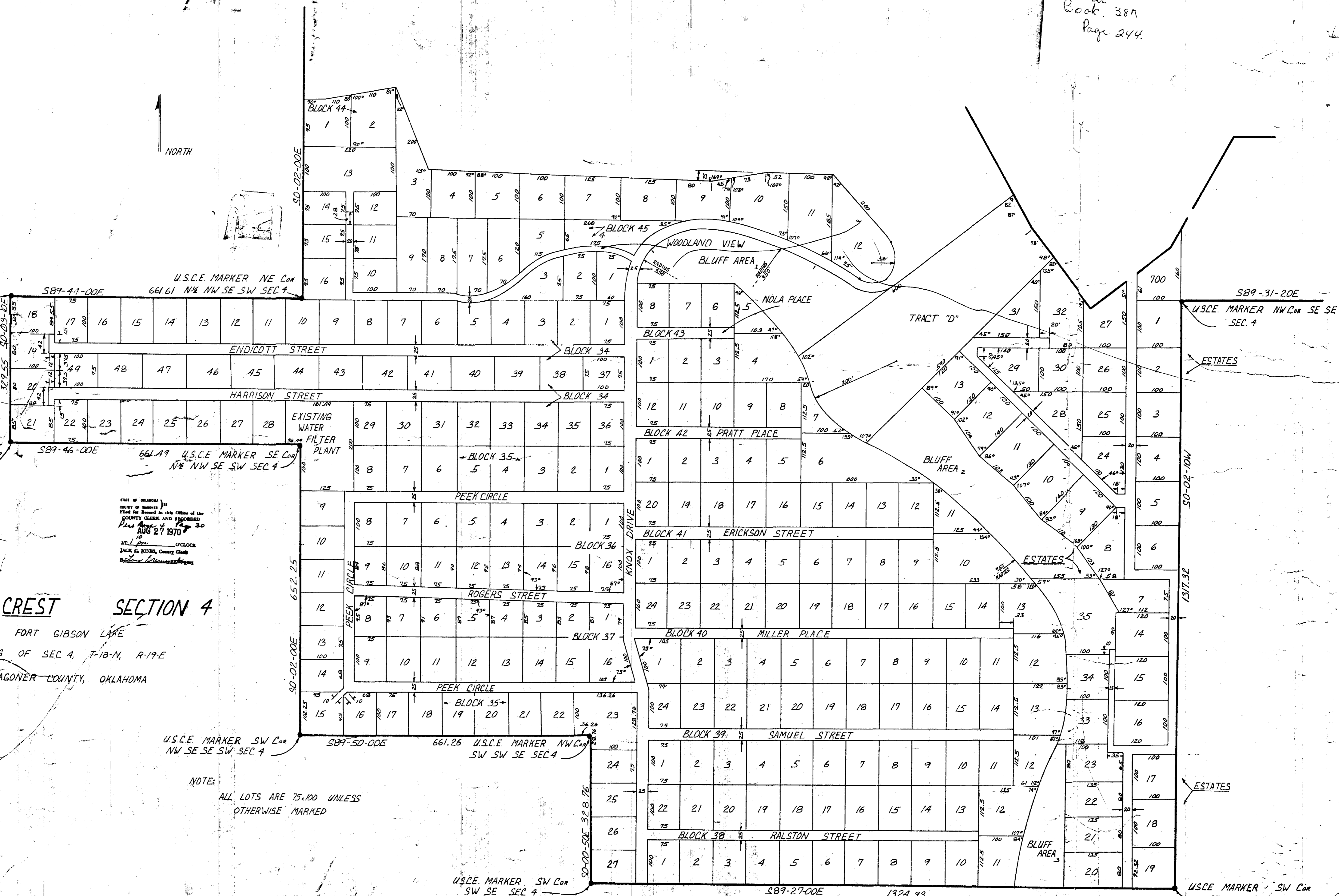


Possible  
restrictions  
in  
Book 387  
Page 244.

NORTH

U.S.C.E. MARKER NW Cor  
NW SE SW SEC 4  
U.S.C.E. MARKER SW Cor  
NW SE SW SEC 4



STATE OF OKLAHOMA  
COUNTY OF WAGONER  
Filed for Record in this Office of the  
COUNTY CLERK AND RECORDED  
This August 4 1970  
AUG 27 1970  
AT 10 O'CLOCK  
JACK L. HONER, County Clerk  
By \_\_\_\_\_

**LAKE CREST SECTION 4**

FORT GIBSON LAKE  
PORTIONS OF SEC 4, T-18-N, R-19-E  
WAGONER COUNTY, OKLAHOMA

U.S.C.E. MARKER SW Cor NW SE SE SW SEC 4  
U.S.C.E. MARKER NW Cor SW SW SE SEC 4

NOTE:  
ALL LOTS ARE 75x100 UNLESS  
OTHERWISE MARKED

U.S.C.E. MARKER SW Cor SW SE SEC 4  
U.S.C.E. MARKER SW Cor SE SE SEC 4