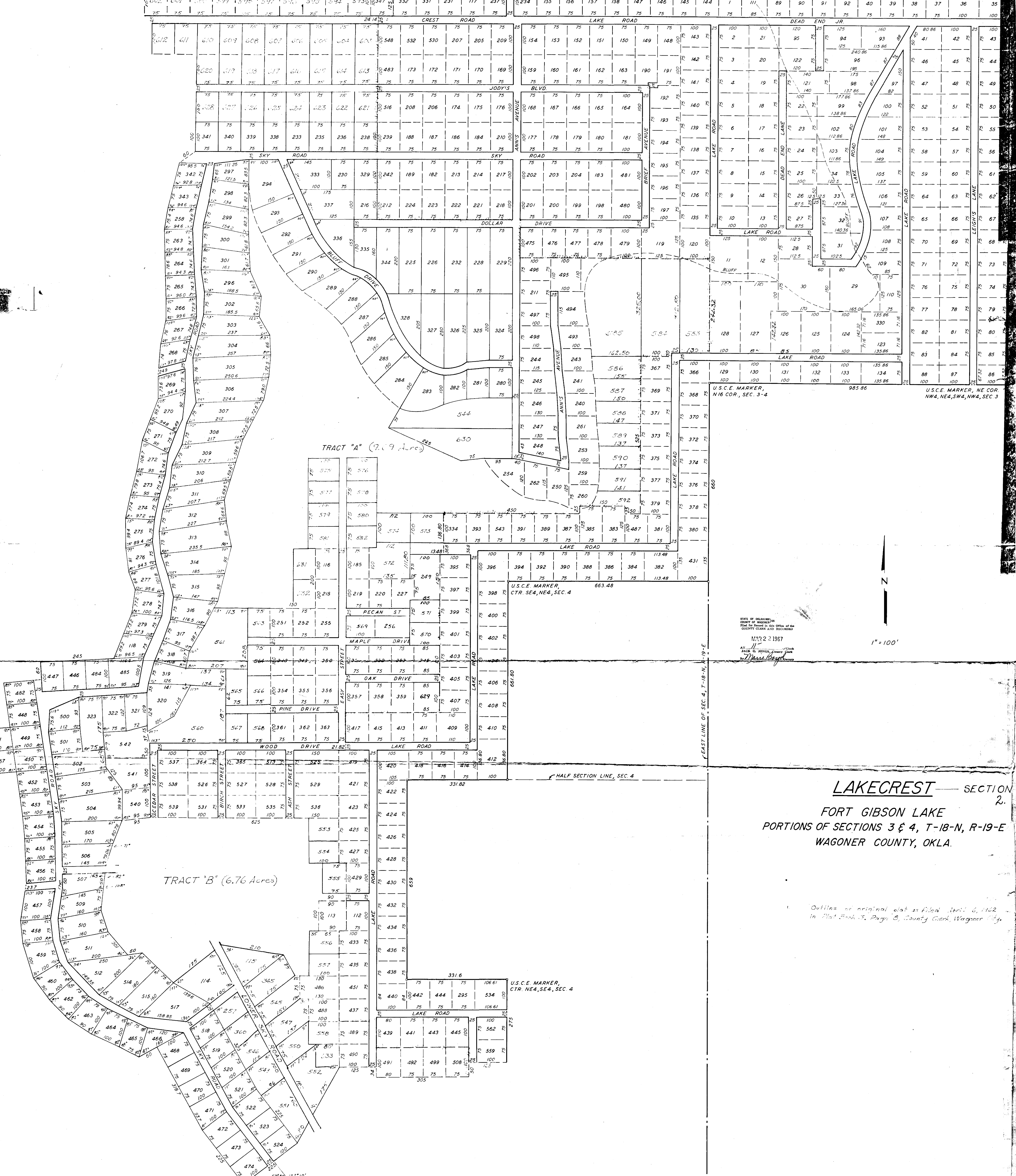


MAIN GATE

U.S.C.E. MARKER, NW COR. NE4, NE4, NW4, NW4, SEC. 4

NORTH LINE OF SEC. 4, T-18-N, R-19-E



STATE OF OKLAHOMA
 COUNTY OF WAGONER
 Filed for Record in this Office of the
 COUNTY CLERK AND RECORDER
 MAY 22 1967
 AT 11:00 A.M.
 JACK G. JONES, County Clerk
 by *M. J. Jones*

1" = 100'

LAKECREST — SECTION 2
 FORT GIBSON LAKE
 PORTIONS OF SECTIONS 3 & 4, T-18-N, R-19-E
 WAGONER COUNTY, OKLA.

Outline of original plat as filed April 6, 1962
 in Plat Book 3, Page 3, County Clerk, Wagoner Co.

U.S.C.E. MARKER, SW COR. NE4, SE4, SEC. 4