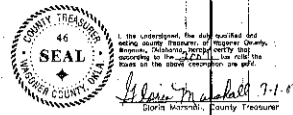


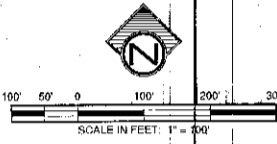
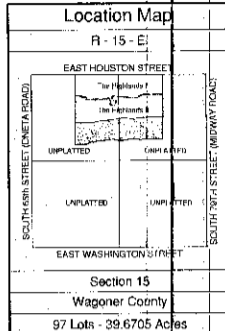
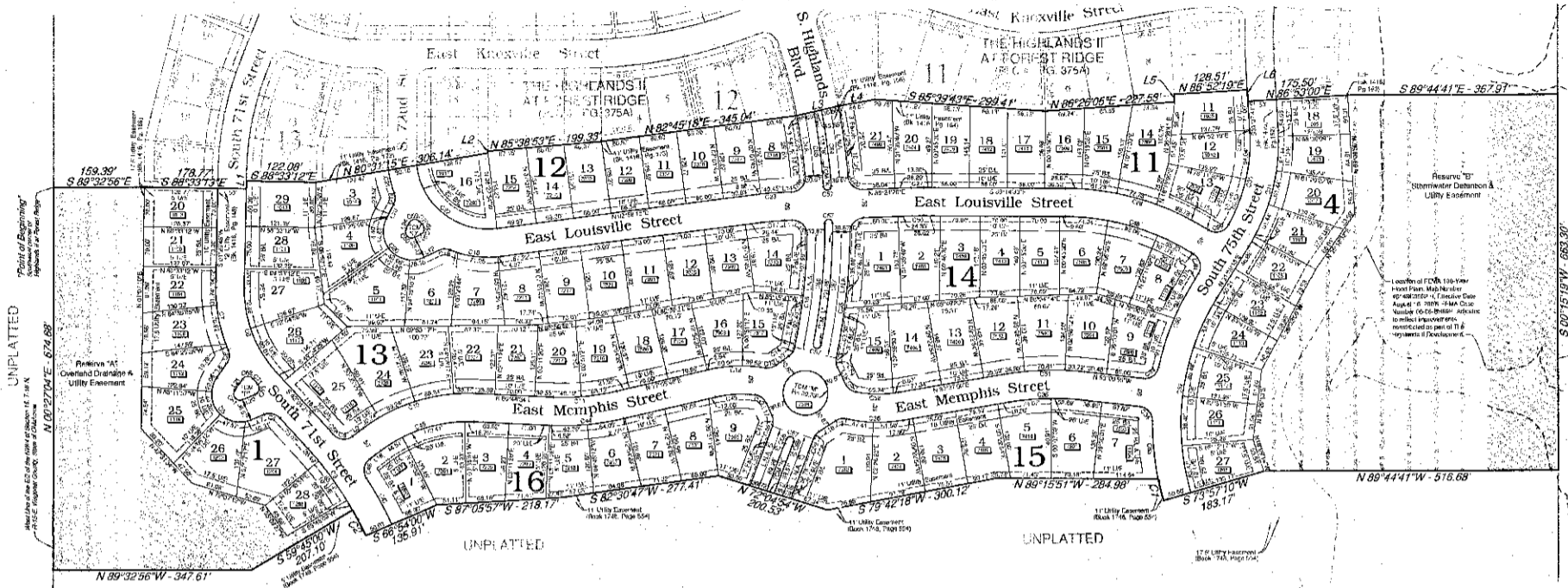
THE HIGHLANDS III AT FOREST RIDGE

OWNER / DEVELOPER
The Robson Companies, Inc.,
an Oklahoma corporation
901 North Forest Ridge Boulevard
Broken Arrow, Oklahoma 74014
918.357.2787

ENGINEER / SURVEYOR
Tulsa Engineering & Planning Associates, Inc.
6737 South 59th East Avenue
Tulsa, Oklahoma 74133
918.252.9621
CERTIFICATE OF AUTHORIZATION NO. 531
EXPIRES DATE: JUNE 30, 2015



(LOTS 20-28, BLOCK 1; LOTS 18 - 27, BLOCK 4; LOTS 11- 21, BLOCK 11; LOTS 8 - 16, BLOCK 12
LOTS 3 - 31, BLOCK 13; All of Block 14; LOTS 1 - 7, BLOCK 15; LOTS 1 - 9, BLOCK 16)
A subdivision in the City of Broken Arrow, being a part of the N/2
of Section 15, T-18-N, R-15-E, of the Indian Meridian, Wagoner County, State of Oklahoma



Backflow Preventer Valve Table

Block	Lot	Valve Type	Notes
BLOCK 1	1	3"	Standard
	2	3"	Standard
	3	3"	Standard
	4	3"	Standard
	5	3"	Standard
	6	3"	Standard
	7	3"	Standard
	8	3"	Standard
	9	3"	Standard
	10	3"	Standard
	11	3"	Standard
	12	3"	Standard
BLOCK 4	13	3"	Standard
	14	3"	Standard
	15	3"	Standard
	16	3"	Standard
	17	3"	Standard
	18	3"	Standard
	19	3"	Standard
	20	3"	Standard
	21	3"	Standard
	22	3"	Standard
	23	3"	Standard
	24	3"	Standard
BLOCK 11	25	3"	Standard
	26	3"	Standard
	27	3"	Standard
	28	3"	Standard
	29	3"	Standard
	30	3"	Standard
	31	3"	Standard
	32	3"	Standard
	33	3"	Standard
	34	3"	Standard
	35	3"	Standard
	36	3"	Standard
BLOCK 12	37	3"	Standard
	38	3"	Standard
	39	3"	Standard
	40	3"	Standard
	41	3"	Standard
	42	3"	Standard
	43	3"	Standard
	44	3"	Standard
	45	3"	Standard
	46	3"	Standard
	47	3"	Standard
	48	3"	Standard
BLOCK 13	49	3"	Standard
	50	3"	Standard
	51	3"	Standard
	52	3"	Standard
	53	3"	Standard
	54	3"	Standard
	55	3"	Standard
	56	3"	Standard
	57	3"	Standard
	58	3"	Standard
	59	3"	Standard
	60	3"	Standard
BLOCK 14	61	3"	Standard
	62	3"	Standard
	63	3"	Standard
	64	3"	Standard
	65	3"	Standard
	66	3"	Standard
	67	3"	Standard
	68	3"	Standard
	69	3"	Standard
	70	3"	Standard
	71	3"	Standard
	72	3"	Standard
BLOCK 15	73	3"	Standard
	74	3"	Standard
	75	3"	Standard
	76	3"	Standard
	77	3"	Standard
	78	3"	Standard
	79	3"	Standard
	80	3"	Standard
	81	3"	Standard
	82	3"	Standard
	83	3"	Standard
	84	3"	Standard
BLOCK 16	85	3"	Standard
	86	3"	Standard
	87	3"	Standard
	88	3"	Standard
	89	3"	Standard
	90	3"	Standard
	91	3"	Standard
	92	3"	Standard
	93	3"	Standard
	94	3"	Standard
	95	3"	Standard
	96	3"	Standard

Legend

BL - Building Line
F&L - Fence & Landscape Easement
I.N.A. - Limits of No Access
ODE - Overland Drainage Easement
TOM - Traffic Control Median
UE - Utility Easement

Monument Notes

A 3" x 18" galvanized iron pipe with a yellow plastic cap stamped "PLS 1253" to be set at all lot corners after completion of improvements, unless noted otherwise.
A 3" x 18" galvanized iron pipe with a yellow plastic cap stamped "PLS 1253" to be set at all street boundary corners, prior to recordation unless noted otherwise.

Basis of Bearings

The non-astronomic bearings for said tract are based on an assumed bearing of S 89° 19' 14" E along the north line of the NW/4 of Section 15, T-18-N, R-15-E, of the Indian Meridian, Wagoner County, State of Oklahoma, according to the official U.S. Government survey thereof.

Benchmark

A standard square on top of curb on the south-easterly side of median island of the traffic circle, in line with the centerline of South Highlands Blvd. Station traffic circle is at the intersection of South Highlands Blvd. and East Jackson Place.
ELEVATION = 676.83 (NVD 1988)

Notes

1. Water to be supplied by the City of Broken Arrow.
2. Sewage to be collected by the City of Broken Arrow.

Stormwater Detention

Stormwater detention accommodations for this site are provided by the onsite detention facility as shown in the "no encroachment" engineering plan in accordance with Final-Plan of Detention Interference # DD-82203 D5.

Lot Addresses

Addresses shown on this plan were provided by the City of Broken Arrow (Engineering Department). The addresses are subject to change and should not be relied upon in place of the legal description.

Line Table

No.	Bearing	Distance
L1	N 01° 26' 48" E	13.63
L2	N 90° 32' 59" E	3.75
L3	N 77° 26' 43" E	75.90
L4	N 89° 10' 32" E	64.61
L5	N 62° 35' 00" W	15.47
L6	S 03° 07' 41" E	19.30
L7	S 67° 45' 38" W	24.44
L8	N 35° 14' 07" E	30.19
L9	N 53° 00' 43" E	24.42
L10	N 54° 15' 16" E	28.77
L11	S 89° 24' 30" W	13.48
L12	S 64° 50' 34" W	27.96
L13	N 27° 27' 13" E	21.82
L14	N 88° 24' 50" E	13.48
L15	S 38° 10' 42" E	6.21
L16	N 57° 12' 00" E	34.66
L17	N 29° 56' 14" W	20.94
L18	N 53° 09' 43" E	24.42
L19	N 29° 16' 54" W	33.61
L20	N 67° 48' 38" E	24.01
L21	N 30° 14' 07" W	28.87
L22	N 59° 04' 43" W	6.48
L23	S 67° 45' 38" W	31.02
L24	N 27° 27' 13" E	11.55
L25	N 54° 50' 04" E	11.35
L26	S 49° 13' 01" E	55.30

Curve Table

Sta.	Chord	Radius	Length
0+00	0.00	0.00	0.00
0+10	10.00	10.00	10.00
0+20	20.00	20.00	20.00
0+30	30.00	30.00	30.00
0+40	40.00	40.00	40.00
0+50	50.00	50.00	50.00
0+60	60.00	60.00	60.00
0+70	70.00	70.00	70.00
0+80	80.00	80.00	80.00
0+90	90.00	90.00	90.00
1+00	100.00	100.00	100.00
1+10	110.00	110.00	110.00
1+20	120.00	120.00	120.00
1+30	130.00	130.00	130.00
1+40	140.00	140.00	140.00
1+50	150.00	150.00	150.00
1+60	160.00	160.00	160.00
1+70	170.00	170.00	170.00
1+80	180.00	180.00	180.00
1+90	190.00	190.00	190.00
2+00	200.00	200.00	200.00
2+10	210.00	210.00	210.00
2+20	220.00	220.00	220.00
2+30	230.00	230.00	230.00
2+40	240.00	240.00	240.00
2+50	250.00	250.00	250.00
2+60	260.00	260.00	260.00
2+70	270.00	270.00	270.00
2+80	280.00	280.00	280.00
2+90	290.00	290.00	290.00
3+00	300.00	300.00	300.00
3+10	310.00	310.00	310.00
3+20	320.00	320.00	320.00
3+30	330.00	330.00	330.00
3+40	340.00	340.00	340.00
3+50	350.00	350.00	350.00
3+60	360.00	360.00	360.00
3+70	370.00	370.00	370.00
3+80	380.00	380.00	380.00
3+90	390.00	390.00	390.00
4+00	400.00	400.00	400.00
4+10	410.00	410.00	410.00
4+20	420.00	420.00	420.00
4+30	430.00	430.00	430.00
4+40	440.00	440.00	440.00
4+50	450.00	450.00	450.00
4+60	460.00	460.00	460.00
4+70	470.00	470.00	470.00
4+80	480.00	480.00	480.00
4+90	490.00	490.00	490.00
5+00	500.00	500.00	500.00
5+10	510.00	510.00	510.00
5+20	520.00	520.00	520.00
5+30	530.00	530.00	530.00
5+40	540.00	540.00	540.00
5+50	550.00	550.00	550.00
5+60	560.00	560.00	560.00
5+70	570.00	570.00	570.00
5+80	580.00	580.00	580.00
5+90	590.00	590.00	590.00
6+00	600.00	600.00	600.00
6+10	610.00	610.00	610.00
6+20	620.00	620.00	620.00
6+30	630.00	630.00	630.00
6+40	640.00	640.00	640.00
6+50	650.00	650.00	650.00
6+60	660.00	660.00	660.00
6+70	670.00	670.00	670.00
6+80	680.00	680.00	680.00
6+90	690.00	690.00	690.00
7+00	700.00	700.00	700.00
7+10	710.00	710.00	710.00
7+20	720.00	720.00	720.00
7+30	730.00	730.00	730.00
7+40	740.00	740.00	740.00
7+50	750.00	750.00	750.00
7+60	760.00	760.00	760.00
7+70	770.00	770.00	770.00
7+80	780.00	780.00	780.00
7+90	790.00	790.00	790.00
8+00	800.00	800.00	800.00
8+10	810.00	810.00	810.00
8+20	820.00	820.00	820.00
8+30	830.00	830.00	830.00
8+40	840.00	840.00	840.00
8+50	850.00	850.00	850.00
8+60	860.00	860.00	860.00
8+70	870.00	870.00	870.00
8+80	880.00	880.00	880.00
8+90	890.00	890.00	890.00
9+00	900.00	900.00	900.00
9+10	910.00	910.00	910.00
9+20	920.00	920.00	920.00
9+30	930.00	930.00	930.00
9+40	940.00	940.00	940.00
9+50	950.00	950.00	950.00
9+60	960.00	960.00	960.00
9+70	970.00	970.00	970.00
9+80	980.00	980.00	980.00
9+90	990.00	990.00	990.00
10+00	1000.00	1000.00	1000.00

Lot Areas

Block	Lot	Area (S.F.)
BLOCK 1	1	10,000
	2	10,000
	3	10,000
	4	10,000
	5	10,000
	6	10,000
	7	10,000
	8	10,000
	9	10,000
	10	10,000
	11	10,000
	12	10,000
BLOCK 4	13	10,000
	14	10,000
	15	10,000
	16	10,000
	17	10,000
	18	10,000
	19	10,000
	20	10,000
	21	10,000
	22	10,000
	23	10,000
	24	10,000
BLOCK 11	25	10,000
	26	10,000
	27	10,000
	28	10,000
	29	10,000
	30	10,000
	31	10,000
	32	10,000
	33	10,000
	34	10,000
	35	10,000
	36	10,000
BLOCK 12	37	10,000
	38	10,000
	39	10,000
	40	10,000
	41	10,000
	42	10,000
	43	10,000
	44	10,000
	45	10,000
	46	10,000
	47	10,000
	48	10,000
BLOCK 13	49	10,000
	50	10,000
	51	10,000
	52	10,000
	53	10,000
	54	10,000
	55	10,000
	56	10,000
	57	10,000
	58	10,000
	59	10,000
	60	10,000
BLOCK 14	61	10,000
	62	10,000
	63	10,000
	64	10,000
	65	10,000
	66	10,000
	67	10,000
	68	10,000
	69	10,000
	70	10,000
	71	10,000
	72	10,000
BLOCK 15	73	10,000
	74	10,000
	75	10,000
	76	10,000
	77	10,000
	78	10,000
	79	10,000
	80	10,000
	81	10,000
	82	10,000
	83	10,000
	84	10,000
BLOCK 16	85	10,000
	86	10,000
	87	10,000
	88	10,000
	89	10,000
	90	10,000
	91	10,000
	92	10,000
	93	10,000
	94	10,000
	95	10,000
	96	10,000



CERTIFICATE OF AUTHORIZATION NO. 531
EXPIRES DATE: JUNE 30, 2015

APPROVED 1-22-15 by the City Council of the City of Broken Arrow, Oklahoma.
M. Wade Malabre, Jr.
Mayor
Attest: City Clerk
M. Wade Malabre, Jr.
1-22-15

THE HIGHLANDS III AT FOREST RIDGE
DN02-116 PT02-105 Sheet 1 of 1
Certified True Copy
CAROLYN KUSNER, COUNTY CLERK
WAGONER COUNTY, OKLA.
By: [Signature]