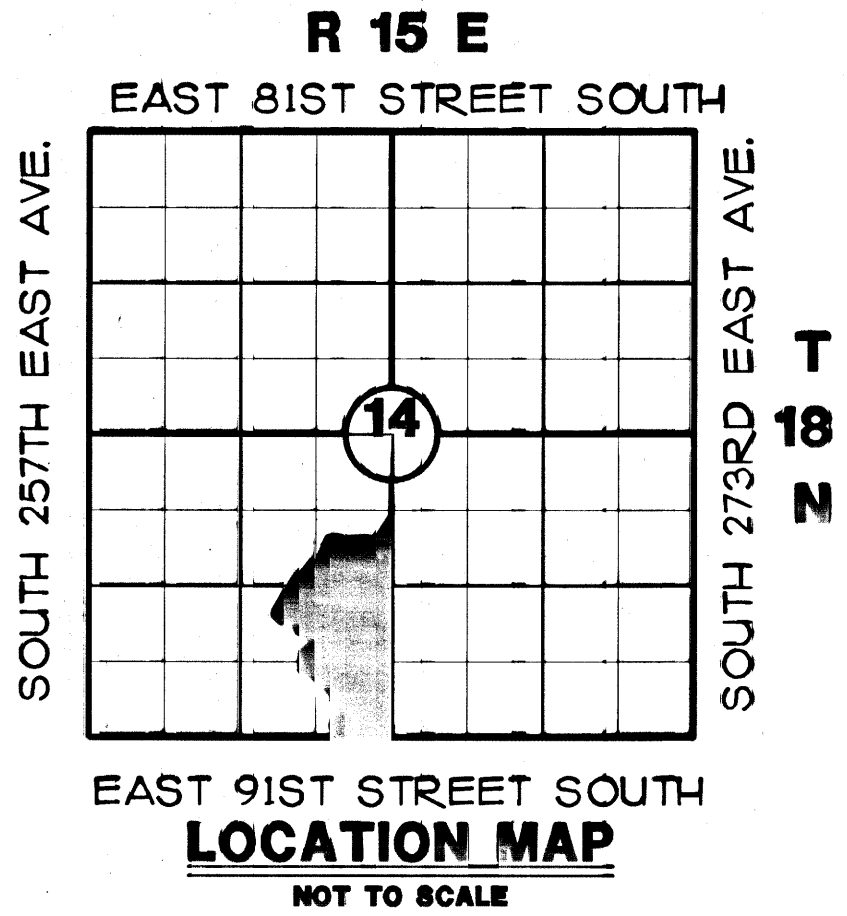


FINAL PLAT OF FOREST GLEN AN ADDITION IN THE SW1/4 OF SECTION 14, T18N, R15E, I.B.&M. WAGONER COUNTY, STATE OF OKLAHOMA SHEET 1 OF 2

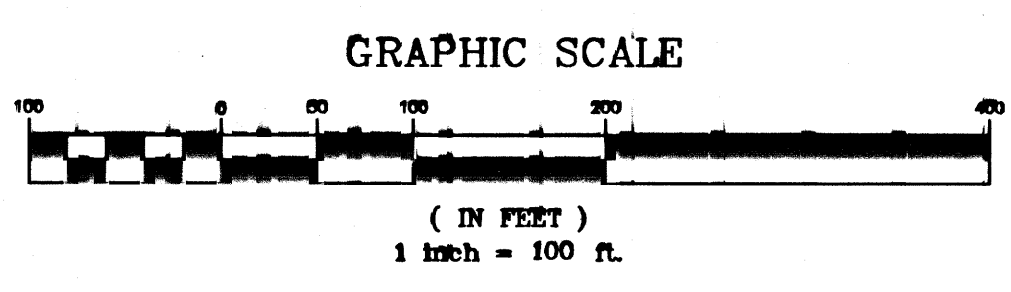


- LEGEND**
- ST STORM SEWER
 - G GAS LINES
 - SS SANITARY SEWER
 - W WATER LINES
 - E ELECTRIC LINES
 - OE OVERHEAD ELECTRIC LINES
 - UE UNDERGROUND ELECTRIC LINES
 - C COMMUNICATION LINES
 - OC OVERHEAD COMMUNICATION LINES
 - UC UNDERGROUND COMMUNICATION LINES
 - △ BRASS CAP
 - SET 5/8" IRON PIN
 - FENCE
 - ✕ CHISELED "X" IN CONCRETE
 - ⊗ STORM SEWER MANHOLE
 - ⊙ SANITARY SEWER MANHOLE
 - ⊕ SANITARY SEWER CLEAN-OUT
 - ⊕ FIRE HYDRANT
 - ⊕ WATER VALVE
 - ⊕ WATER METER
 - ⊕ GAS VALVE
 - ⊕ GAS METER
 - ⊕ CURB INLET
 - ⊕ TELEPHONE PEDESTAL
 - ⊕ POWER POLE
 - ⊕ LIGHT POLE
 - ⊕ DOWN GUY
 - ⊕ TREE
 - 40'x60' BUILDING FID

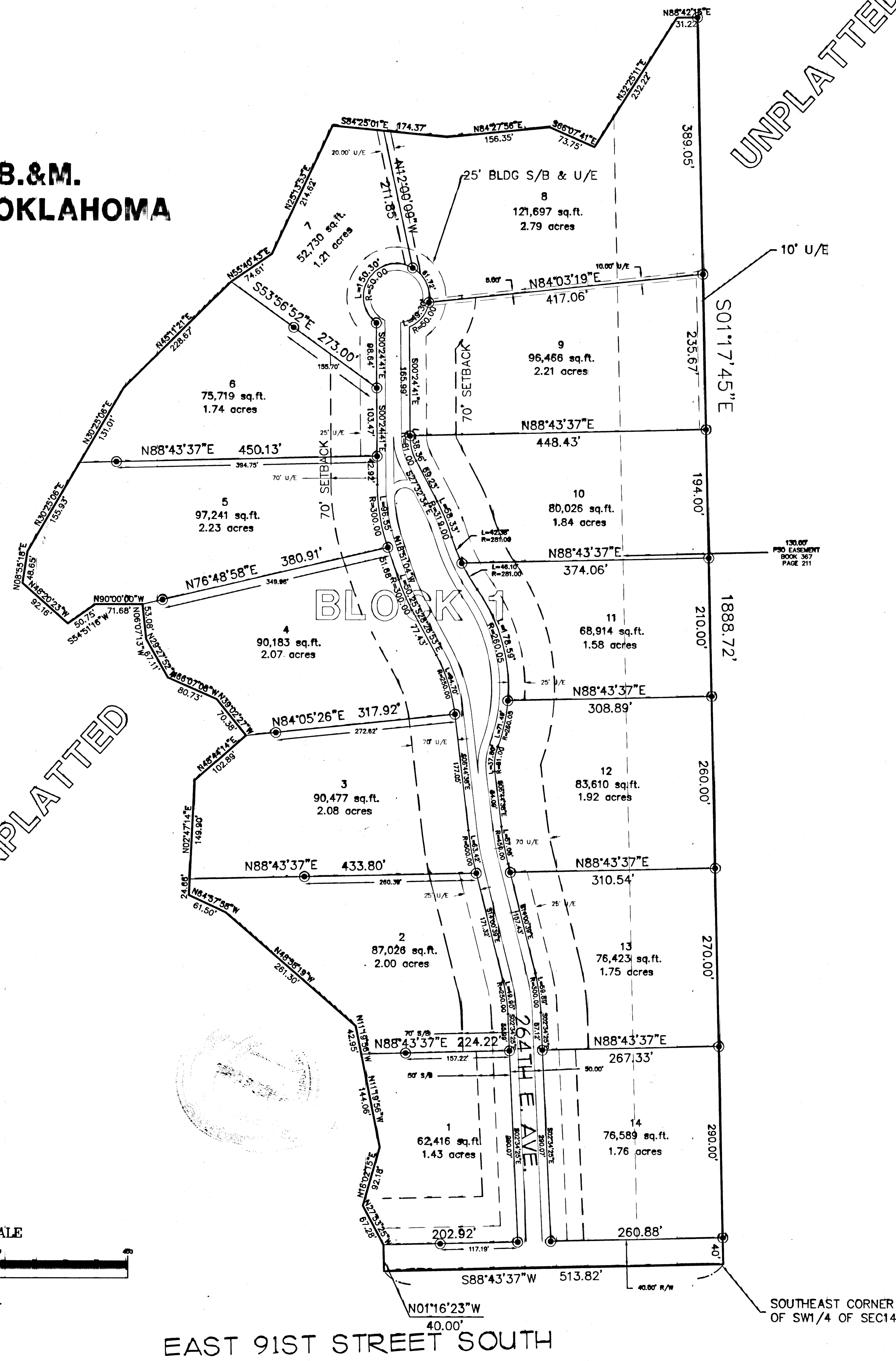
NOTE: THE UTILITY EASEMENT ON LOTS 1 AND 14 MAY BE USED FOR MAINTENANCE OF ENTRY GATE AND FENCE.

ALL LOTS TO HAVE CORNER MONUMENTS SET AFTER CONSTRUCTION OF STREETS AND UTILITIES.

BEARINGS ARE BASED ON NAD83(93) STATE PLANE COORDINATE SYSTEM, NORTH ZONE.



UNPLATTED



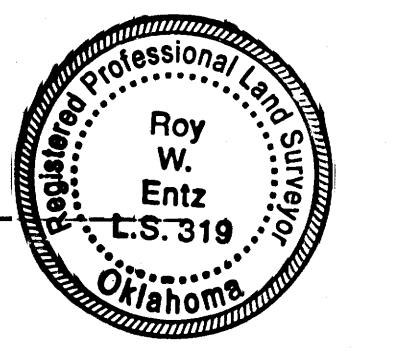
UNPLATTED

CERTIFICATE OF SURVEY

KNOW ALL MEN BY THESE PRESENTS, that I, Roy Entz, a resident of Muskogee County, State of Oklahoma, do hereby certify that I have carefully and accurately surveyed and platted into lots and block the above described property and that this plat is a true and correct representation thereof, I further certify that this plat meets the minimum standards for the practice of land surveying.

WITNESS my hand and seal this 9th day of June 2004

Roy Entz
 Roy Entz, Land Surveyor 319
 CA #535 (expires 6/30/2006)

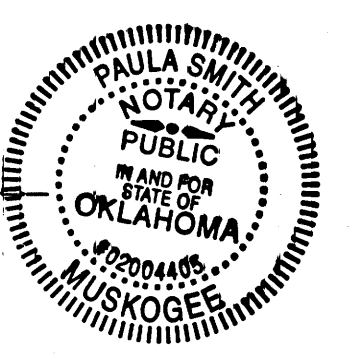


STATE OF OKLAHOMA
 COUNTY OF MUSKOGEE

Before me, the undersigned, a notary public in and for the County of Muskogee, State of Oklahoma, personally appeared Roy Entz to me known to be the identical person who executed the foregoing instrument and acknowledged to me that he executed the same as his free and voluntary act and deed for the purpose therein set forth.

WITNESS my hand and seal this 9th day of June 2004

Paula Smith
 Notary Public



My Commission expires: 4-4-06

TREASURER'S CERTIFICATE

I hereby certify that as to all real estate involved in the plat, all taxes have been paid for 2002 as reflected by the current tax roll and that there are no taxes due for prior years, and security has been provided for taxes not as yet certified to me.

Gloria Marshall
 County Treasurer



CERTIFICATE OF COUNTY CLERK

This plat has been filed in the office of the County Clerk, Wagoner County, Oklahoma, this 29th day of June, 2004, Book 1413, Page 698, 699

Debra Fields
 County Clerk

Approved: Wagoner County Planning Commission

Bradley Johnston

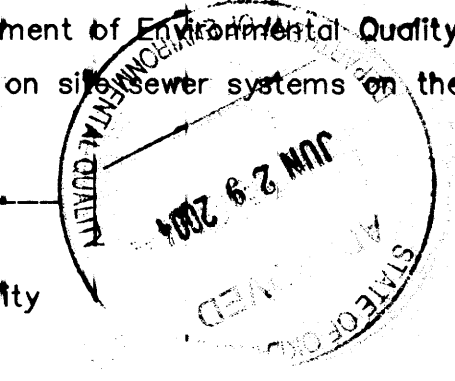
APPROVED:

T. J. Vincent
 County Commissioner

6-28-2004
 Date

The Wagoner Office of the Department of Environmental Quality has approved this plat for the use of Public water systems and on sewer systems on the 29 day of June 2004

Michael Bay
 Environmental Program Specialist
 Department of Environmental Quality



PREPARED BY:

Entz Engineering and Associates, Inc.
 CA #535 (expires 6/30/2006)
 600 Emporia St., Ste. "C"
 Muskogee, Oklahoma 74401
 (918) 682-3832