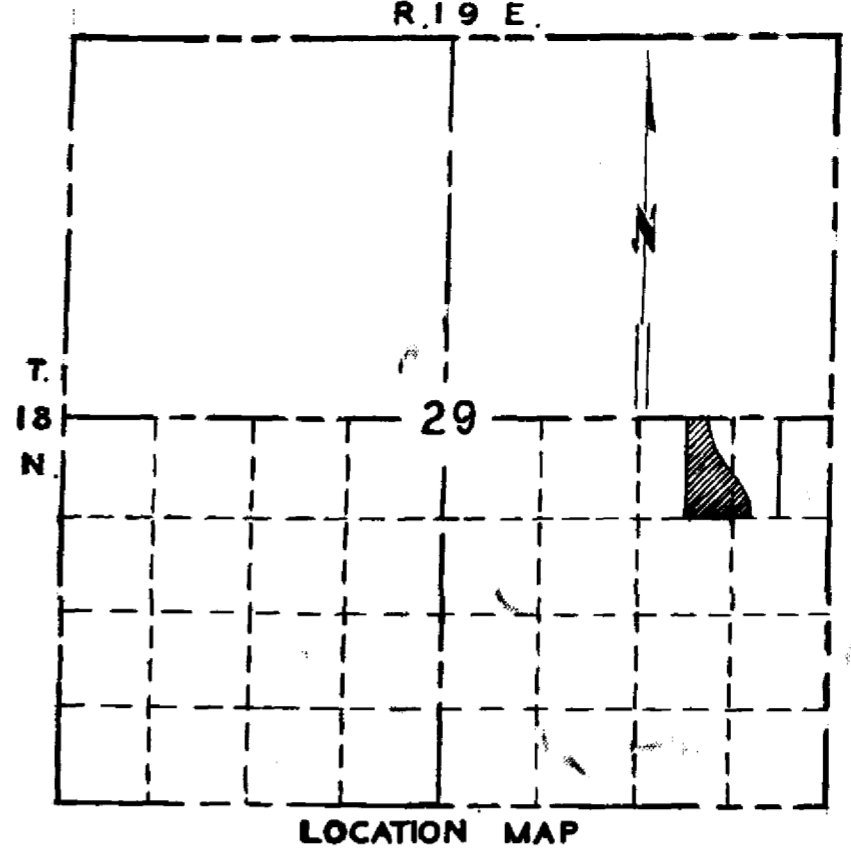
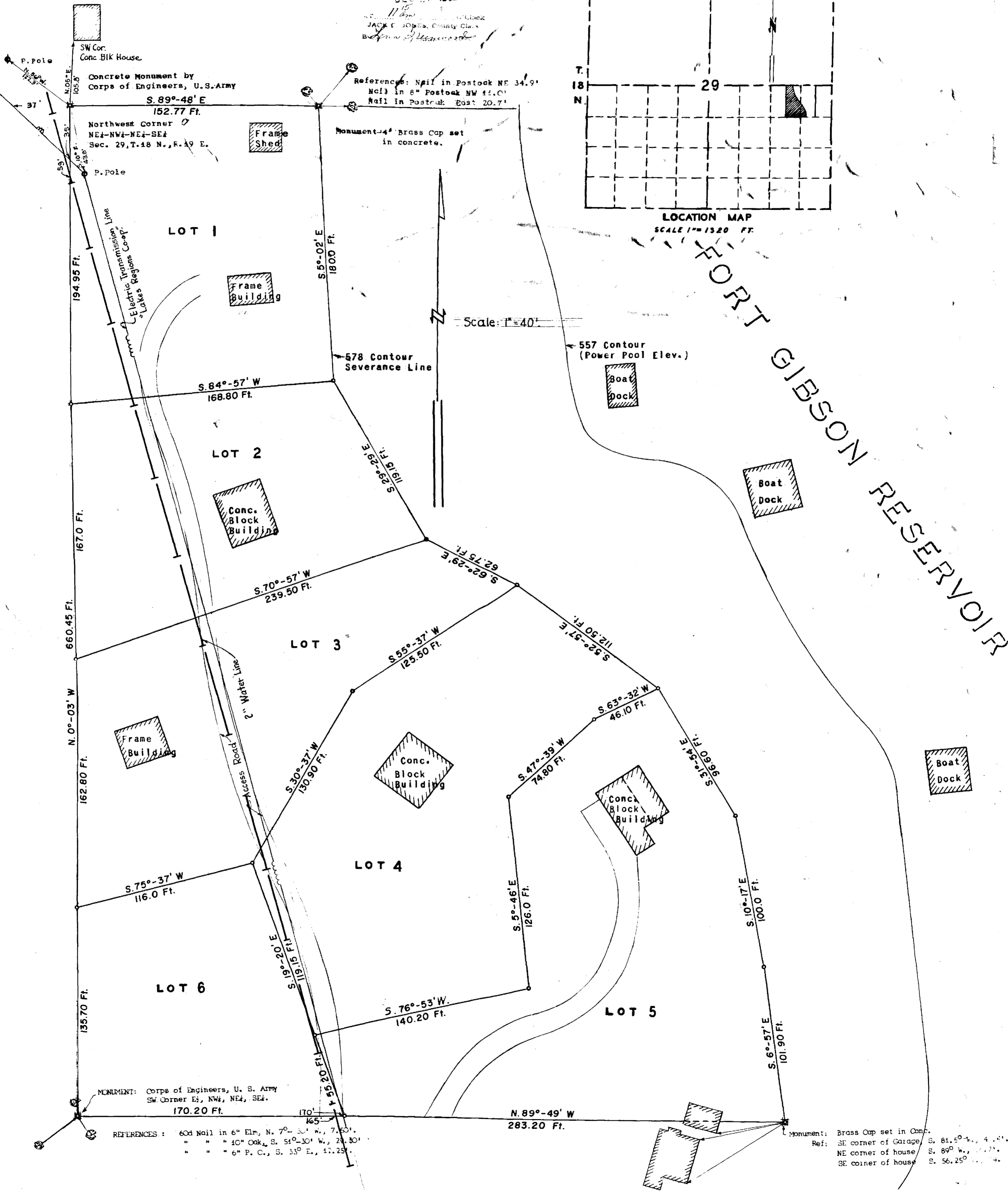


Plan Book 2 Page 34435  
 DEC 20 1953  
 JACK E. JOHNS, County Clerk  
 Bureau of Measurements



LOCATION MAP  
 SCALE 1" = 1520 FT.



PORT GIBSON RESERVOIR

Concrete Monument by Corps of Engineers, U.S. Army  
 Northwest Corner  
 NE1-NW1-NE1-SE1  
 Sec. 29, T. 18 N., R. 19 E.

Reference: Nail in Post oak NE 34.9'  
 Nail in 8" Post oak NW 41.0'  
 Nail in Post oak East 20.7'

MONUMENT: Corps of Engineers, U. S. Army  
 SW Corner E1, NW1, NE1, SE1.  
 170.20 Ft.

REFERENCES: 6" Nail in 6" Elm, N. 7°-30' W., 7.60'  
 " " " 4" Oak, S. 54°-30' W., 28.80'  
 " " " 6" P. C., S. 33° E., 17.25'

Monument: Brass Cap set in Conc.  
 Ref: SE corner of Garage S. 81.5° W., 4.4'  
 NE corner of house S. 89° W., 7.7'  
 SE corner of house S. 56.25° W., 4.4'