

C:\wagner_14784_EMERALD FALLS (HIDDEN VALLEY)\4784_PHASE_1_PLAT.dwg, 2/13/2006 2:05:10 PM, 1:100

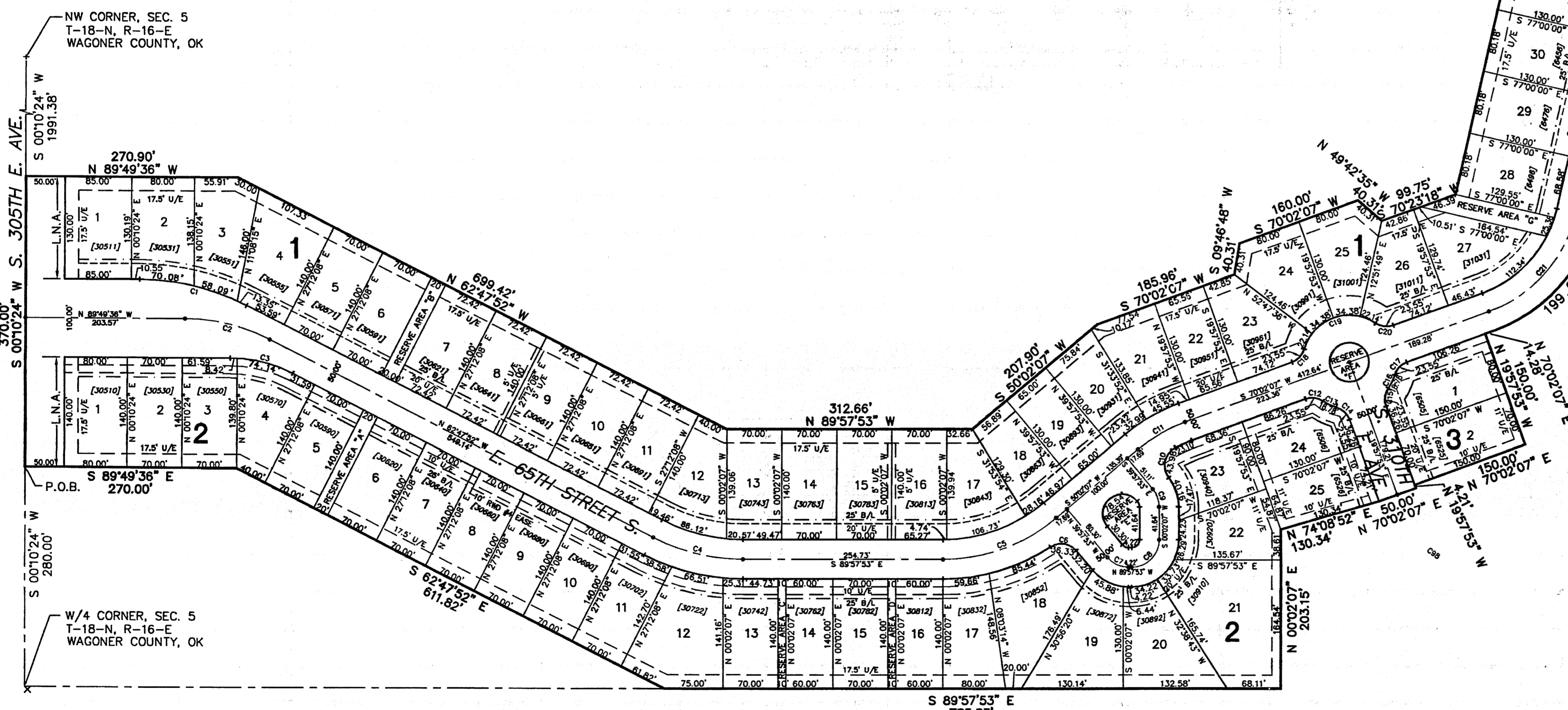
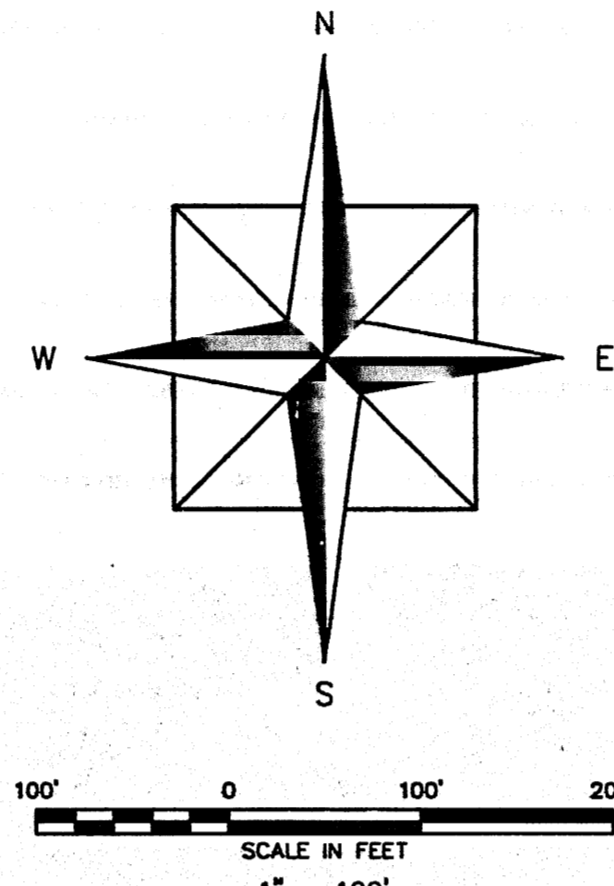
WEST HALF OF EMERALD FALLS

WAGONER COUNTY, OKLAHOMA
CAROLYN M. KUSLER, COUNTY CLERK **PLC 394 B** 02/13/2006 #2006-2136
10:15:47AM B-1558 P-213

CURVE	RADIUS	DELTA	ARC	TANGENT	BEARING	CHORD
C1	300.00'	270°44'	141.52'	72.10'	S 76°18'44" E	140.21'
C2	* 237.50'	270°44'	112.04'	57.08'	N 76°18'44" W	111.00'
C3	175.00'	270°44'	82.55'	42.06'	N 76°18'44" W	81.79'
C4	* 250.00'	270°00'	118.54'	60.41'	S 76°22'53" E	117.43'
C5	* 225.00'	40°00'00"	157.08'	81.89'	N 70°02'07" E	153.91'
C6	25.00'	85°15'13"	36.33'	22.22'	N 81°35'30" W	33.21'
C7	* 35.00'	50°00'00"	30.54'	16.32'	S 64°57'53" E	29.58'
C8	* 35.00'	90°00'00"	34.98'	35.00'	N 45°02'07" E	49.50'
C9	* 35.00'	40°00'00"	24.43'	12.74'	S 16°57'53" E	23.94'
C10	25.00'	100°47'11"	43.98'	30.21'	S 12°04'46" W	38.52'
C11	* 200.00'	20°00'00"	69.81'	35.27'	N 60°02'07" E	69.46'
C12	25.00'	53°58'05"	23.55'	12.73'	S 82°58'51" E	22.69'
C13	60.00'	17°56'10"	18.78'	9.47'	S 64°57'53" E	18.71'
C14	25.00'	53°58'05"	23.55'	12.73'	S 40°50'56" E	22.69'
C15	25.00'	53°58'05"	23.55'	12.73'	S 07°00'00" W	22.69'
C16	60.00'	17°56'10"	18.78'	9.47'	N 25°02'07" E	18.71'
C17	25.00'	53°58'05"	23.55'	12.73'	N 43°03'04" E	22.69'
C18	25.00'	53°58'05"	23.55'	12.73'	N 43°03'04" E	22.69'
C19	60.00'	107°56'10"	113.03'	82.49'	N 70°02'07" E	97.04'
C20	25.00'	53°58'05"	23.55'	12.73'	S 82°58'51" E	22.69'
C21	* 175.00'	57°02'07"	174.20'	95.09'	N 41°31'03" E	167.10'
C22	* 175.00'	70°00'00"	213.80'	122.54'	N 48°00'00" E	200.79'
C23	25.00'	77°09'37"	33.67'	19.94'	N 11°32'24" E	31.18'
C24	25.00'	77°09'37"	33.67'	19.94'	S 89°57'53" E	31.18'
C25	* 40.00'	43°29'54"	28.07'	15.15'	S 06°17'28" E	28.34'
C26	* 40.00'	75°35'41"	52.77'	31.02'	N 52°15'16" E	49.03'
C27	* 40.00'	73°21'16"	51.21'	29.79'	S 53°16'19" E	47.78'
C28	25.00'	99°35'41"	43.46'	29.58'	N 33°12'10" E	38.19'
C29	25.00'	83°08'08"	40.84'	26.41'	S 58°34'08" E	38.31'
C30	* 250.00'	00°00'12"	35.56'	17.78'	S 78°54'34" W	35.47'
C31	* 250.00'	15°11'47"	66.31'	33.35'	N 82°27'41" E	66.11'
C32	* 100.00'	25°40'39"	44.82'	22.79'	S 77°06'06" E	44.44'
C33	25.00'	90°00'00"	39.27'	25.00'	N 70°44'14" E	35.36'
C34	25.00'	90°14'30"	39.38'	25.11'	N 19°23'16" W	35.43'

C35	* 100.00'	53°24'28"	93.21'	50.30'	N 89°02'00" E	89.88'
C36	25.00'	90°00'00"	39.27'	25.00'	S 72°40'14" E	35.36'
C37	* 75.00'	57°37'35"	75.43'	41.25'	S 56°29'01" E	72.29'
C38	50.00'	229°05'39"	199.92'	109.48'	S 05°14'45" W	90.96'
C39	20.00'	87°58'42"	30.71'	19.31'	S 65°18'44" E	27.78'
C40	25.00'	74°48'27"	32.63'	19.11'	S 16°03'50" W	30.36'
C41	* 200.00'	371°742"	130.18'	67.49'	S 43°40'55" W	127.90'
C42	* 100.00'	36°42'35"	64.27'	33.29'	N 44°09'01" E	63.17'
C43	* 75.00'	52°28'15"	68.68'	36.96'	N 88°47'56" E	66.31'
C44	25.00'	90°00'00"	39.27'	25.00'	S 19°57'56" E	35.36'
C45	25.00'	90°00'00"	39.27'	25.00'	S 70°02'04" W	35.36'
C46	* 300.00'	245°714"	130.66'	66.38'	N 12°33'27" E	129.63'
C47	25.00'	90°02'46"	39.29'	25.02'	N 44°56'33" W	35.37'
C48	25.00'	48°11'23"	21.03'	11.18'	N 65°56'23" E	20.41'
C49	50.00'	276°22'46"	241.19'	44.72'	N 00°02'04" E	66.67'
C50	25.00'	48°11'23"	21.03'	11.18'	N 65°52'15" W	20.41'
C51	25.00'	89°57'14"	39.25'	24.98'	S 45°03'27" W	35.34'
C52	25.00'	90°02'46"	39.29'	25.02'	N 44°56'33" W	35.37'
C53	25.00'	36°52'12"	16.09'	8.33'	N 71°33'58" E	15.81'
C54	50.00'	163°47'09"	142.93'	35.01'	S 44°56'33" E	99.00'
C55	25.00'	36°52'12"	16.09'	8.33'	N 18°30'56" E	15.81'
C56	25.00'	90°02'46"	39.29'	25.02'	S 44°56'33" E	35.37'
C57	25.00'	89°57'14"	39.25'	24.98'	N 45°03'27" E	35.34'
C58	* 152.80'	52°34'44"	134.86'	72.19'	N 25°22'12" E	130.55'
C59	25.00'	104°04'32"	45.41'	32.04'	N 88°37'18" E	39.42'
C60	25.00'	90°00'00"	39.27'	25.00'	N 05°39'34" E	35.36'
C61	* 100.00'	90°00'00"	157.08'	100.00'	N 84°20'28" W	141.42'
C62	* 75.00'	50°38'35"	66.25'	35.46'	N 25°21'16" E	64.12'
C63	* 75.00'	90°05'55"	117.83'	75.02'	N 44°57'28" W	106.08'
C64	25.00'	90°00'00"	39.27'	25.00'	S 45°02'04" E	35.36'
C65	25.00'	90°00'00"	39.27'	25.00'	N 44°57'56" W	35.36'
C66	25.00'	90°00'00"	39.27'	25.00'	N 45°02'04" E	35.36'
C67	25.00'	90°00'00"	39.27'	25.00'	N 44°57'56" W	35.36'
C68	* 112.00'	50°37'07"	99.04'	53.01'	S 25°20'49" W	95.85'
C69	25.00'	36°52'12"	16.09'	8.33'	S 71°31'50" E	15.81'
C70	50.00'	163°41'37"	142.85'	349.00'	S 45°03'27" W	98.99'
C71	25.00'	36°52'12"	16.09'	8.33'	N 18°31'16" W	15.81'
C72	25.00'	89°57'14"	39.25'	24.98'	N 45°03'27" E	35.34'

* DENOTES CENTER LINE RADIUS



WAGONER COUNTY TREASURER
I, *Carolyn M. Kusler*, TREASURER FOR THE COUNTY OF WAGONER, STATE OF OKLAHOMA, DO HEREBY STATE THAT ALL BACK TAXES HAVE BEEN PAID ON THE DESCRIBED PROPERTY.



DATE: *2-14-06*
Carolyn M. Kusler
WAGONER COUNTY TREASURER

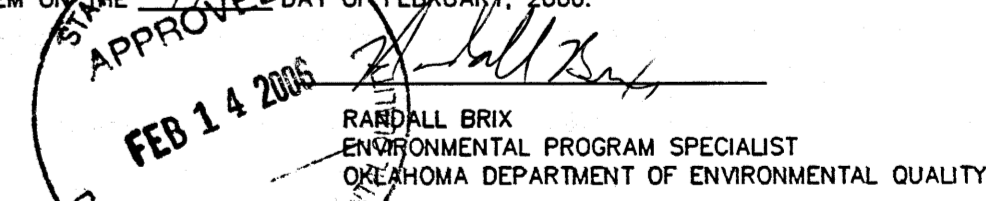
ACCEPTANCE OF PLAT
BE IT RESOLVED BY THE WAGONER METROPOLITAN AREA PLANNING COMMISSION OF WAGONER COUNTY, STATE OF OKLAHOMA, THAT THE ABOVE SHOWN IS ACCEPTED, AND ADOPTED BY THE WAGONER METROPOLITAN AREA PLANNING COMMISSION.

APPROVED BY THE CHAIRMAN OF THE WAGONER METROPOLITAN AREA PLANNING COMMISSION OF WAGONER COUNTY, STATE OF OKLAHOMA
DATE: *2-14-06*
Brian S. Robinson
WAGONER METROPOLITAN AREA PLANNING COMMISSION

WAGONER COUNTY COMMISSION
BE IT RESOLVED BY THE WAGONER COUNTY BOARD OF COUNTY COMMISSIONERS, WAGONER COUNTY, STATE OF OKLAHOMA, THAT THE ABOVE SHOWN PLAT IS APPROVED.

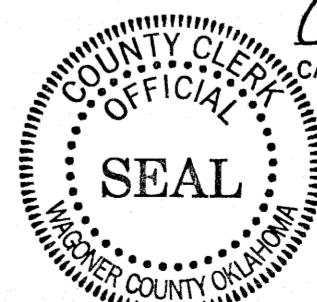
APPROVED BY THE WAGONER COUNTY BOARD OF COMMISSIONERS WAGONER COUNTY, STATE OF OKLAHOMA
DATE: *2-14-06*
John S. Saylor
CHAIRMAN, WAGONER COUNTY BOARD OF COUNTY COMMISSIONERS

DEPARTMENT OF ENVIRONMENTAL QUALITY
THE WAGONER OFFICE OF THE DEPARTMENT OF ENVIRONMENTAL QUALITY HAS APPROVED THIS PLAT FOR THE USE OF A PUBLIC WATER SYSTEM AND A PUBLIC SEWER SYSTEM ON THE DAY OF FEBRUARY, 2006.



CERTIFICATE OF WAGONER COUNTY CLERK
I, CAROLYN KUSLER, THE COUNTY CLERK OF WAGONER COUNTY, DO HEREBY STATE THE SUBDIVISION CALLED EMERALD FALLS HAS BEEN FILED INTO WAGONER COUNTY RECORDS.

ROADS WILL BE MAINTAINED BY WAGONER COUNTY



Carolyn Kusler *CLK*
CAROLYN KUSLER, WAGONER COUNTY CLERK

LEGEND
N NORTH
S SOUTH
E EAST
W WEST
B.L. BUILDING LINE
U/E UTILITY EASEMENT
L.N.A. LIMITS OF NO ACCESS
[19819] STREET ADDRESS