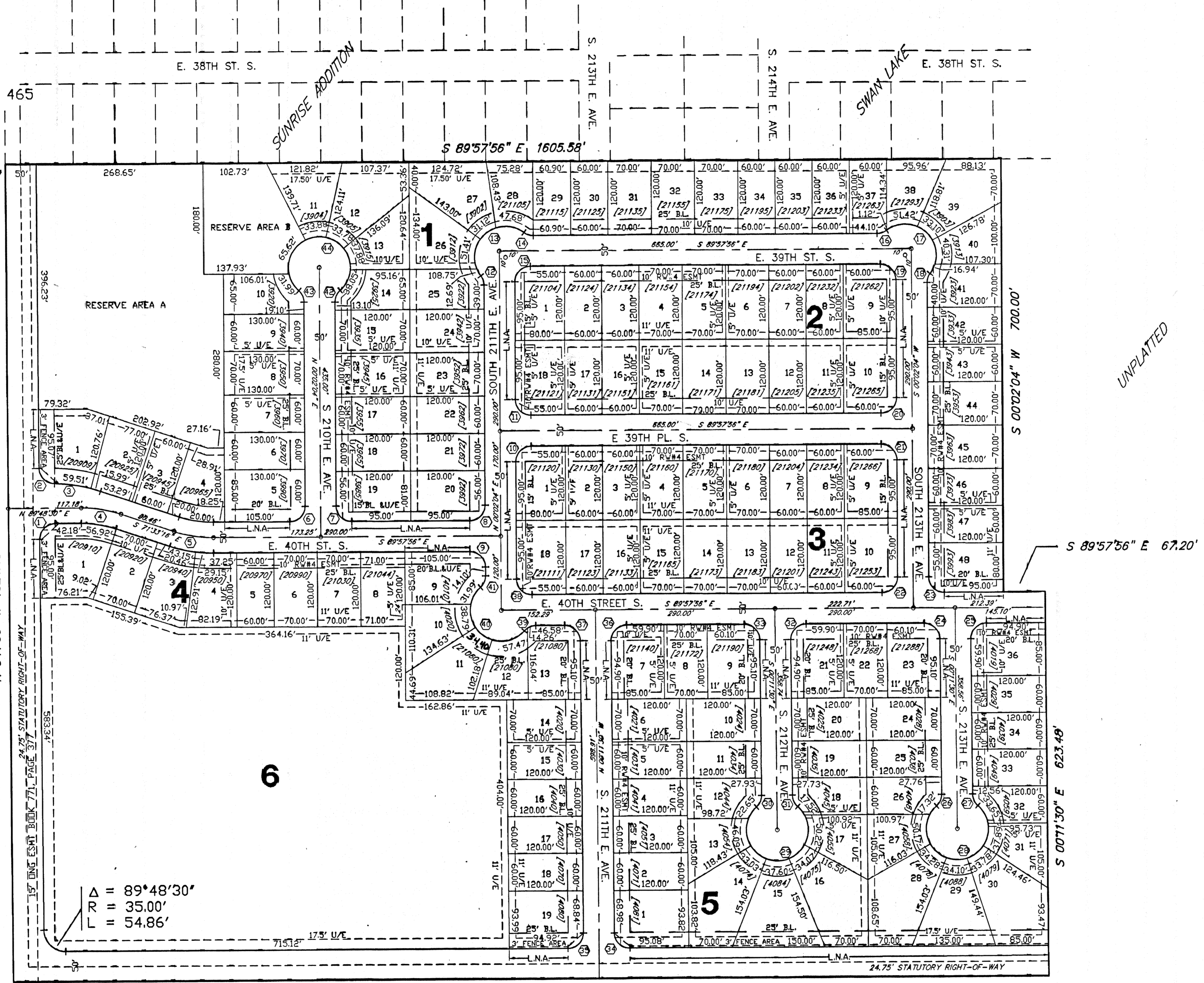
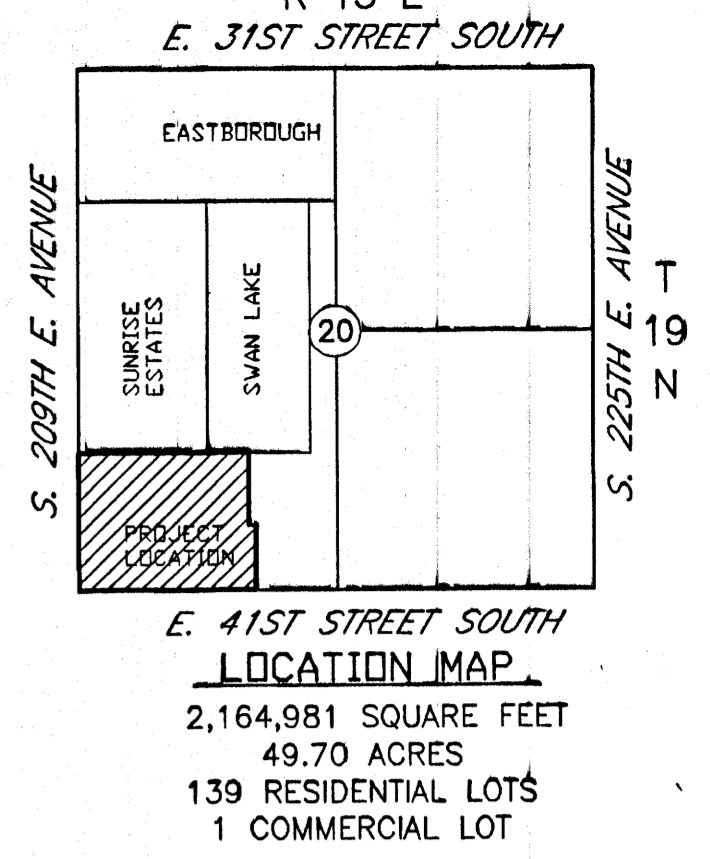


# EAGLE RIDGE

A PART OF THE S/2 SW/4, SECTION 20, TOWNSHIP 19 NORTH, RANGE 15 EAST  
 AN ADDITION TO THE COUNTY OF WAGONER, OKLAHOMA

**OWNER**  
 EAGLE RIDGE DEVELOPMENT, L.L.C.  
 2219 E. SKELLY DRIVE  
 TULSA, OKLAHOMA 74105  
 PHONE: (918) 749-1636

**ENGINEER**  
 TUTTLE & ASSOCIATES, INC  
 9718 E. 55TH PL.  
 TULSA, OKLAHOMA 74146  
 (918) 663-5567  
 CERTIFICATE OF AUTHORITY CA 465  
 EXPIRATION 6-30-03



**WAGONER COUNTY TREASURER**  
 I, *Mary Ann Sudder* TREASURER FOR THE COUNTY OF WAGONER,  
 STATE OF OKLAHOMA, DO HEREBY STATE THAT ALL BACK TAXES HAVE  
 BEEN PAID ON THE DESCRIBED PROPERTY.  
 DATE: 3-14-03 *Mary Ann Sudder*  
 WAGONER COUNTY TREASURER

**ACCEPTANCE OF PLAT**  
 BE IT RESOLVED BY THE WAGONER METROPOLITAN AREA PLANNING  
 COMMISSION OF WAGONER COUNTY, STATE OF OKLAHOMA, THAT THE  
 ABOVE SHOWN IS ACCEPTED, AND ADOPTED BY THE WAGONER  
 METROPOLITAN AREA PLANNING COMMISSION.  
 APPROVED BY THE CHAIRMAN OF THE WAGONER METROPOLITAN  
 AREA PLANNING COMMISSION OF WAGONER COUNTY, STATE OF OKLAHOMA  
 DATE: 3-14-03 *Brenda Peterson*  
 WAGONER METROPOLITAN  
 AREA PLANNING COMMISSION

**WAGONER COUNTY COMMISSION**  
 BE IT RESOLVED BY THE WAGONER COUNTY BOARD OF COUNTY  
 COMMISSIONERS, WAGONER COUNTY, STATE OF OKLAHOMA, THAT THE  
 ABOVE SHOWN PLAT IS APPROVED.  
 APPROVED BY THE WAGONER COUNTY BOARD OF COMMISSIONERS  
 WAGONER COUNTY, STATE OF OKLAHOMA  
 DATE: 3-14-03 *Jim Hargrove*  
 JIM HARGROVE  
 CHAIRMAN, WAGONER COUNTY  
 BOARD OF COUNTY COMMISSIONERS

**DEPARTMENT OF ENVIRONMENTAL QUALITY**  
 I CERTIFY I HAVE APPROVED THE APPLICATION AND PLAN FOR A PLAT OF A  
 RESIDENTIAL DEVELOPMENT WHICH IS ON FILE AT THE WAGONER OFFICE OF THE  
 DEPARTMENT OF ENVIRONMENTAL QUALITY, AND HEREBY APPROVE THIS PLAT FOR  
 THE USE OF A PUBLIC WATER SYSTEM AND A PUBLIC SEWAGE SYSTEM.  
 DATE: 3-14-03 *Chad Keller*  
 CHAD KELLER  
 ENVIRONMENTAL SPECIALIST SUPERVISOR  
 OKLAHOMA DEPARTMENT OF ENVIRONMENTAL QUALITY

CURVE TABLE							
POLYGON NUMBER	RADIUS	DELTA	LENGTH	POLYGON NUMBER	RADIUS	DELTA	LENGTH
1	25.00'	90°00'00"	39.27'	23	25.00'	90°00'00"	39.27'
2	25.00'	88°40'02"	38.69'	24	25.00'	89°46'26"	39.17'
3	25.00'	17°18'16"	75.50'	25	25.00'	90°13'34"	39.37'
4	200.00'	18°38'14"	65.06'	26	25.00'	48°11'23"	21.03'
5	200.00'	18°24'40"	64.27'	27	25.00'	48°11'23"	21.03'
6	25.00'	90°00'00"	39.27'	28	50.00'	276°22'46"	241.19'
7	25.00'	90°00'00"	39.27'	29	50.00'	276°22'46"	241.19'
8	25.00'	90°00'00"	39.27'	30	25.00'	48°11'23"	21.03'
9	25.00'	90°00'00"	39.27'	31	25.00'	48°11'23"	21.03'
10	25.00'	90°00'00"	39.27'	32	25.00'	90°13'34"	39.37'
11	25.00'	90°00'00"	39.27'	33	25.00'	89°46'26"	39.17'
12	25.00'	36°52'12"	16.09'	34	25.00'	89°48'30"	39.19'
13	50.00'	163°44'23"	142.90'	35	25.00'	90°11'30"	39.35'
14	25.00'	36°52'12"	16.09'	36	25.00'	90°13'34"	39.37'
15	25.00'	90°00'00"	142.90'	37	25.00'	89°46'26"	39.17'
16	25.00'	36°52'12"	16.09'	38	25.00'	90°00'00"	39.27'
17	50.00'	90°00'00"	39.27'	39	25.00'	48°11'23"	21.03'
18	25.00'	36°52'12"	16.09'	40	50.00'	186°22'46"	162.65'
19	25.00'	90°00'00"	39.27'	41	25.00'	48°11'23"	21.03'
20	50.00'	90°00'00"	39.27'	42	25.00'	48°11'23"	21.03'
21	25.00'	90°00'00"	39.27'	43	25.00'	48°11'23"	21.03'
22	25.00'	90°00'00"	39.27'	44	50.00'	276°22'46"	241.19'

**LEGEND**

N	NORTH
S	SOUTH
E	EAST
W	WEST
B.L.	BUILDING LINE
U/E	UTILITY EASEMENT
L.N.A.	LIMITS OF NO ACCESS
[19619]	STREET ADDRESS
R.W. #4 ESMT.	WAGONER COUNTY RURAL WATER #4 RESTRICTED WATER EASEMENT

THIS PLAT OF SURVEY MEETS THE OKLAHOMA MINIMUM STANDARDS FOR THE PRACTICE OF LAND SURVEYING AS ADOPTED BY THE OKLAHOMA STATE BOARD OF REGISTRATION FOR PROFESSIONAL ENGINEERS AND LAND SURVEYORS.  
 BASIS OF BEARINGS - SOUTH SECTION LINE IS ASSUMED DUE WEST