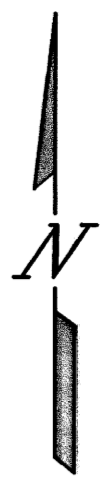


# Final Plat

## Eagle Point II

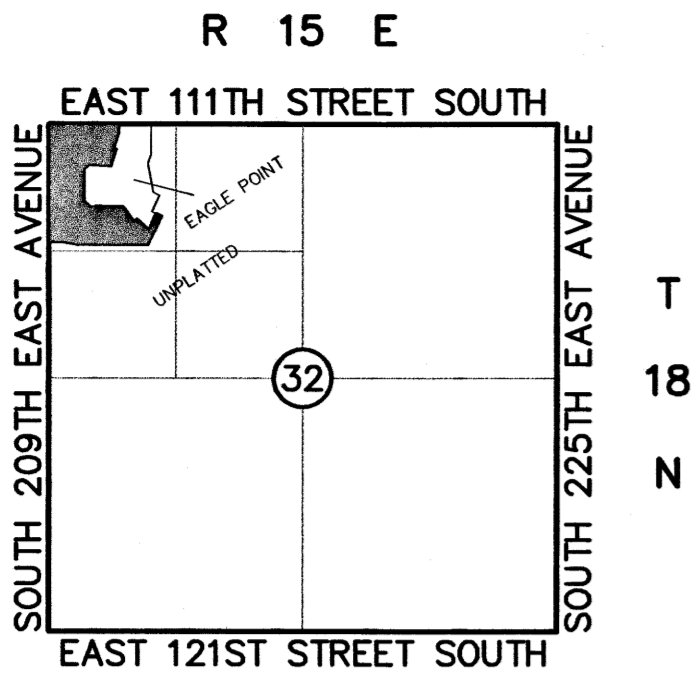
A PART OF THE NW/4 OF NW/4 OF SECTION 32, T-18-N, R-15-E  
 AN ADDITION TO WAGONER COUNTY, OKLAHOMA



Scale: 1"=60'



- ACC ACCESS PERMITTED
- B/L BUILDING SETBACK LINE
- D/E DRAINAGE EASEMENT
- L/E LANDSCAPE EASEMENT
- LNA LIMITS OF NO ACCESS
- PR/E PUBLIC ROADWAY EASEMENT
- R/W RIGHT-OF-WAY
- U/E UTILITY EASEMENT



Location Map  
 SCALE: 1"=2000'

SUBDIVISION CONTAINS  
 34 LOTS IN 3 BLOCKS  
 TOTAL AREA: 19.60 ACRES

BEARING BASE: STATE PLANE GRID BEARINGS  
 ADDRESSES SHOWN ON THIS PLAT ARE ACCURATE  
 AS OF THE TIME THE PLAT WAS FILED. ADDRESSES ARE  
 SUBJECT TO CHANGE AND SHOULD NEVER BE RELIED  
 ON IN PLACE OF THE LEGAL DESCRIPTION.

ACCESS ALONG 111TH STREET SOUTH AND 209TH EAST  
 AVENUE PERMITTED ONLY WHERE DESIGNATED "ACC".

**SURVEYOR:**

Benchmark Surveying &  
 Land Services, Inc.  
 P.O. Box 1078  
 Owasso, Oklahoma 74055  
 Phone: (918) 274-9081

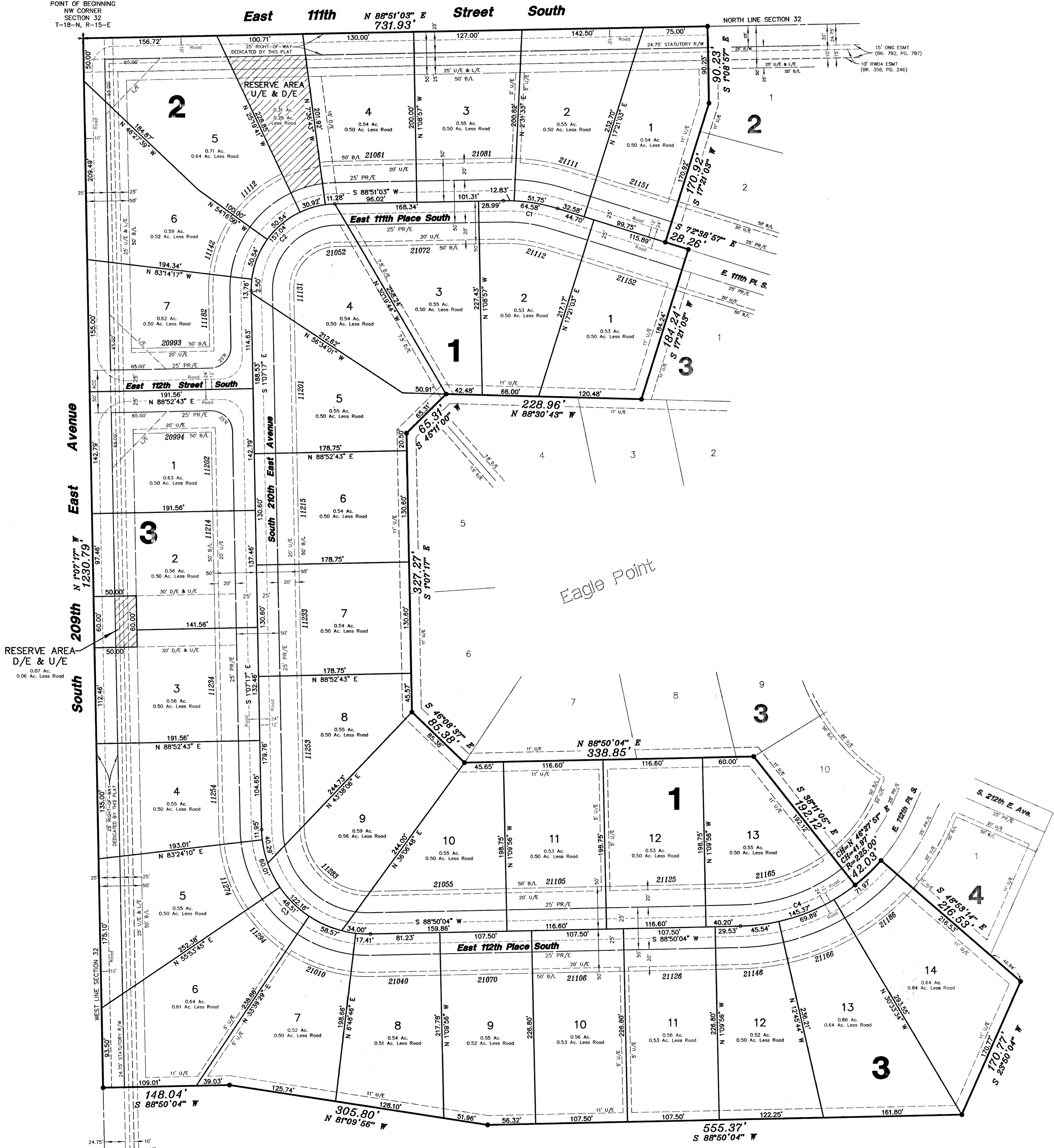
**OWNER/DEVELOPER**

Armory LLC  
 4500 South Garnett Road  
 Suite 600  
 Tulsa, Oklahoma 74146  
 Phone: (918) 665-1900

**ENGINEER**

Independent Design  
 Consultants, LLC  
 1520 West Dogwood Street  
 Rogers, Arkansas 72756  
 Phone: (479) 621-7837

POINT OF BEGINNING  
 NW CORNER  
 SECTION 32  
 T-18-N, R-15-E



**Curve Information**

CURVE #	LENGTH	DELTA	RADIUS	CHORD	BEARING
C1	64.58'	18°30'00"	200.00'	64.30'	N 81°53'57" W
C2	157.04'	89°58'20"	100.00'	141.39'	S 43°51'53" E
C3	196.45'	90°02'30"	125.00'	176.84'	S 48°08'37" E
C4	143.37'	37°01'08"	225.00'	142.80'	N 70°19'30" E

ROADS WILL BE  
 MAINTAINED BY  
 WAGONER COUNTY

Certified True Copy  
 CAROLYN M. KUSLER, COUNTY CLERK  
 Wagoner County, Okla.  
 By *Sharon K. Adams*  
 DEPUTY



BENCHMARK SURVEYING & LAND SERVICES, INC.