

EAGLE CREEK VII

A REPLAT OF BLOCKS 13 AND 14 EAGLE CREEK V
AN ADDITION TO THE COUNTY OF WAGONER, OKLAHOMA

OWNER
EASY INVESTMENTS, L.L.C.
2219 E. SKELLY DRIVE
TULSA, OKLAHOMA 74105
PHONE: (918) 749-1636

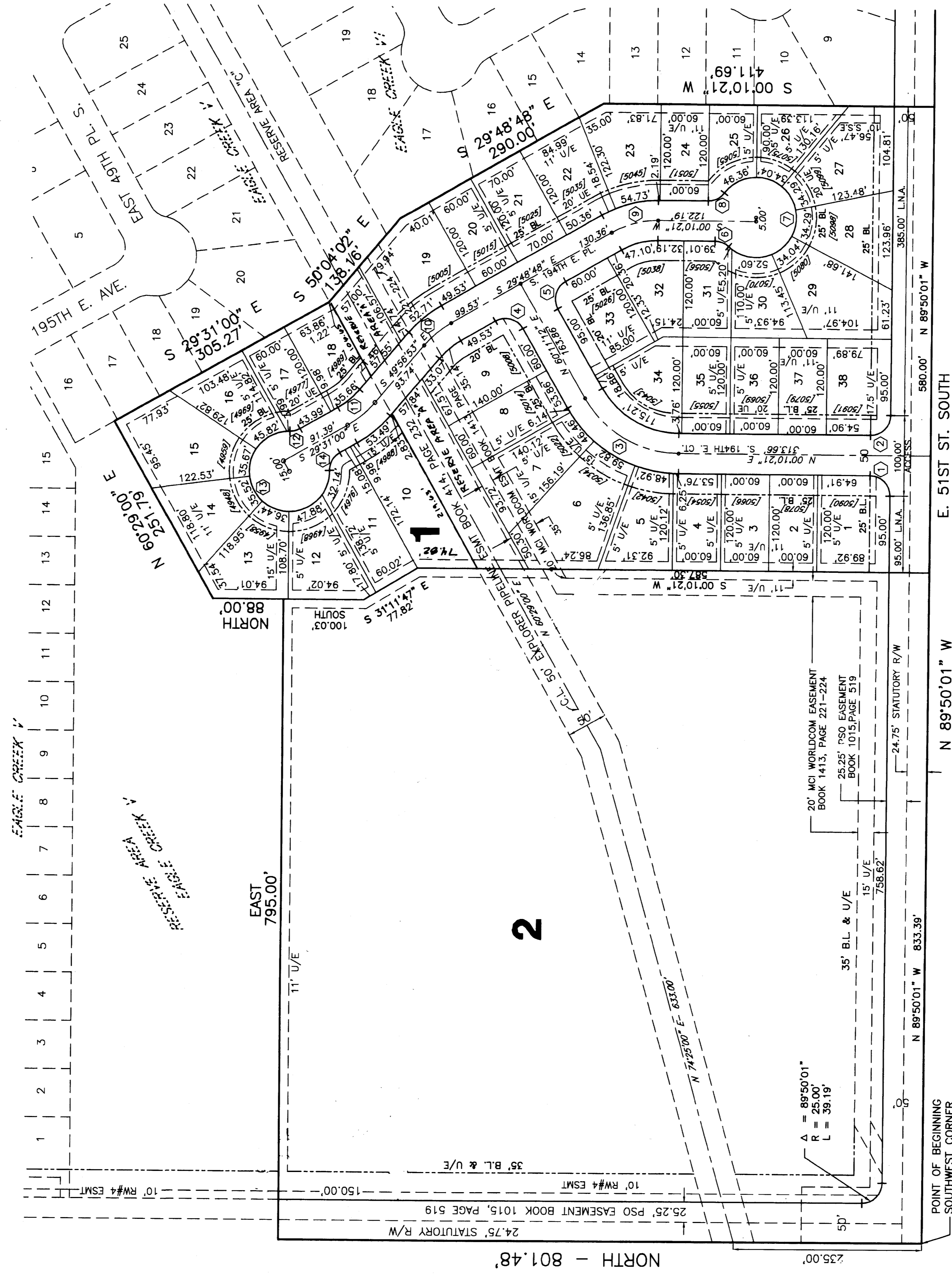
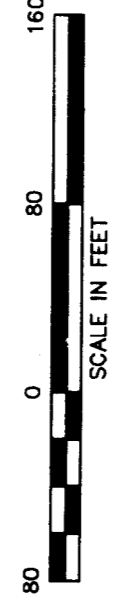
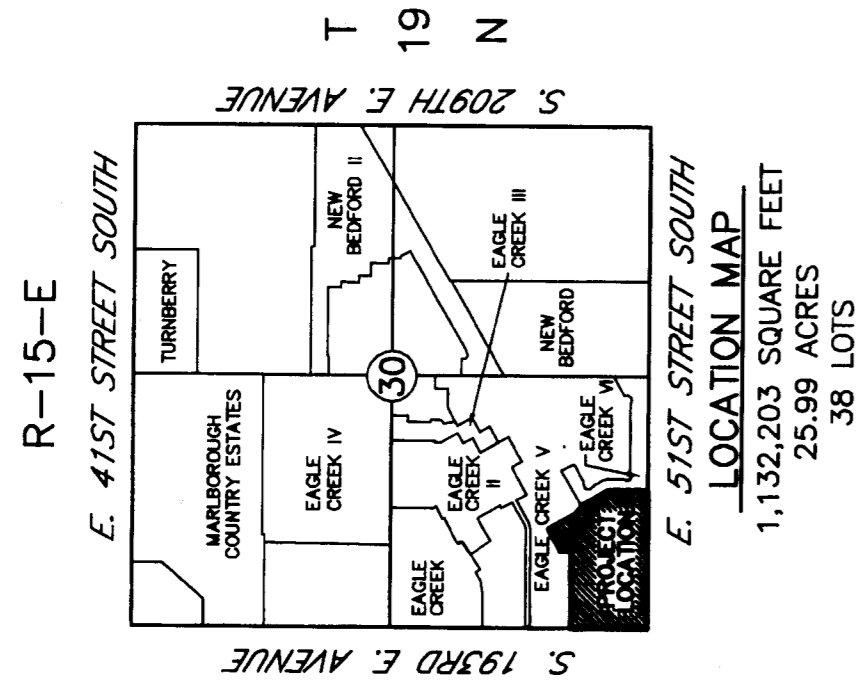
CO-OWNER
JAD DEVELOPMENT, L.L.C.
2219 E. SKELLY DRIVE
TULSA, OKLAHOMA 74105
PHONE: (918) 749-1636

ENGINEER
TUTTLE & ASSOCIATES, INC
9718 E. 55TH PL.
TULSA, OKLAHOMA 74146
(918) 663-5567
CERTIFICATE OF AUTHORITY CA 465
EXPIRATION 6-30-05

WAGONER COUNTY, OKLAHOMA
JERRY FIELDS, COUNTY CLERK

PLC 4 374 A

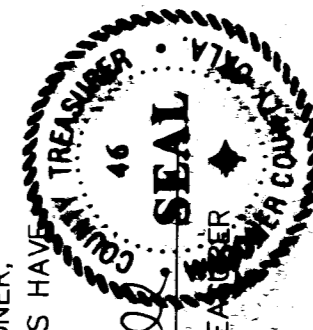
07/19/2004 #2004-1027
03:39:24PM B-1419 P-25



WAGONER COUNTY TREASURER

I, *Shirley Maxwell*, TREASURER FOR THE COUNTY OF WAGONER, STATE OF OKLAHOMA, DO HEREBY STATE THAT ALL BACK TAXES HAVE BEEN PAID ON THE DESCRIBED PROPERTY.

DATE: 7-19-04



ACCEPTANCE OF PLAT

BE IT RESOLVED BY THE WAGONER METROPOLITAN AREA PLANNING COMMISSION OF WAGONER COUNTY, STATE OF OKLAHOMA, THAT THE ABOVE SHOWN IS ACCEPTED, AND ADOPTED BY THE WAGONER METROPOLITAN AREA PLANNING COMMISSION.

APPROVED BY THE CHAIRMAN OF THE WAGONER METROPOLITAN AREA PLANNING COMMISSION OF WAGONER COUNTY, STATE OF OKLAHOMA

DATE: 7-19-04

Shirley Maxwell
WAGONER METROPOLITAN
AREA PLANNING COMMISSION

WAGONER COUNTY COMMISSION

BE IT RESOLVED BY THE WAGONER COUNTY BOARD OF COUNTY COMMISSIONERS, WAGONER COUNTY, STATE OF OKLAHOMA, THAT THE ABOVE SHOWN PLAT IS APPROVED.

APPROVED BY THE WAGONER COUNTY BOARD OF COMMISSIONERS

WAGONER COUNTY, STATE OF OKLAHOMA

DATE: 7-19-2004

Tom Vincent
TOM VINCENT
CHAIRMAN, WAGONER COUNTY
BOARD OF COUNTY COMMISSIONERS

DEPARTMENT OF ENVIRONMENTAL QUALITY

I CERTIFY I HAVE APPROVED THE APPLICATION AND PLAN FOR A PLAT OF A RESIDENTIAL DEVELOPMENT WHICH IS ON FILE AT THE WAGONER OFFICE OF THE USE OF A PUBLIC WATER SYSTEM AND A PUBLIC SEWAGE SYSTEM. DEPARTMENT OF ENVIRONMENTAL QUALITY, AND HEREBY APPROVE THIS PLAT FOR

DATE: 7-19-2004

Chad Keller
CHAD KELLER
ENVIRONMENTAL SPECIALIST SUPERVISOR
OKLAHOMA DEPARTMENT OF ENVIRONMENTAL QUALITY

POLYGON NUMBER	RADIUS	DELTA	LENGTH
1	25.00'	88°47'07"	18.27'
2	135.00'	60°00'51"	141.41'
3	90.00'00"	90°00'00"	39.27'
4	25.00'	90°00'00"	18.69'
5	25.00'	42°50'00"	240.82'
6	50.00'	275°57'49"	23.18'
7	25.00'	53°07'48"	60.19'
8	125.00'	28°39'09"	125.00'
9	125.00'	20°25'53"	44.97'
10	25.00'	27°55'35"	13.06'
11	25.00'	272°06'30"	237.46'
12	25.00'	62°10'55"	27.13'

* - DATA IS CENTERLINE INFORMATION

LEGEND

- N NORTH
- S SOUTH
- E EAST
- W WEST
- B.L. BUILDING LINE
- U/E UTILITY EASEMENT
- L.N.A. LIMITS OF NO ACCESS
- (1987)

THIS PLAT OF SURVEY MEETS THE OKLAHOMA MINIMUM STANDARDS FOR THE PRACTICE OF LAND SURVEYING AS ADOPTED BY THE OKLAHOMA STATE BOARD OF REGISTRATION FOR PROFESSIONAL ENGINEERS AND LAND SURVEYORS.

BASIS OF BEARINGS - SOUTH SECTION LINE IS ASSUMED N 89°50'01" W