

# EAGLE CREEK

A PART OF THE SW/4 OF SECTION 30, TOWNSHIP 19 NORTH,  
 RANGE 15 EAST, COUNTY OF WAGONER, OKLAHOMA

OWNER  
**EAGLE CREEK DEVELOPMENT, L.L.C.**

2219 E. SKELLY DRIVE  
 TULSA, OKLAHOMA 74134  
 PHONE: (918) 749-1636

ENGINEER  
**TUTTLE & ASSOCIATES, INC**

9718 E. 55TH PL  
 TULSA, OKLAHOMA 74146  
 PHONE: (918) 663-5567  
 CERTIFICATE OF AUTHORITY CA 465  
 EXPIRATION 6-30-99

CURVE TABLE			
POLYGON NUMBER	RADIUS	DELTA	LENGTH
1	25.00'	90°00'00"	39.27'
2	25.00'	48°11'23"	21.03'
3	50.00'	178°55'41"	158.02'
4	25.00'	42°50'00"	18.69'
5	25.00'	90°02'55"	39.29'
6	25.00'	89°57'05"	39.25'
7	25.00'	90°02'55"	39.29'
8	25.00'	89°57'05"	39.25'
9	25.00'	90°02'55"	39.29'
10	25.00'	42°50'00"	18.69'
11	50.00'	178°55'41"	153.26'
12	25.00'	42°50'00"	18.69'
13	25.00'	89°57'05"	39.25'
14	225.00'W	27°41'47"	108.76'
15	225.00'W	34°05'48"	133.90'
16	225.00'W	34°05'48"	133.90'
17	50.00'	276°22'46"	241.19'
18	25.00'	48°11'23"	21.03'
19	25.00'	48°11'23"	21.03'
20	25.00'	90°00'00"	39.27'

\* DENOTES CENTERLINE RADIUS

**WAGONER COUNTY TREASURER**  
 I, Wagoner County Treasurer, TREASURER FOR THE COUNTY OF WAGONER, STATE OF OKLAHOMA, DO HEREBY STATE THAT ALL BACK TAXES HAVE BEEN PAID ON THE DESCRIBED PROPERTY.

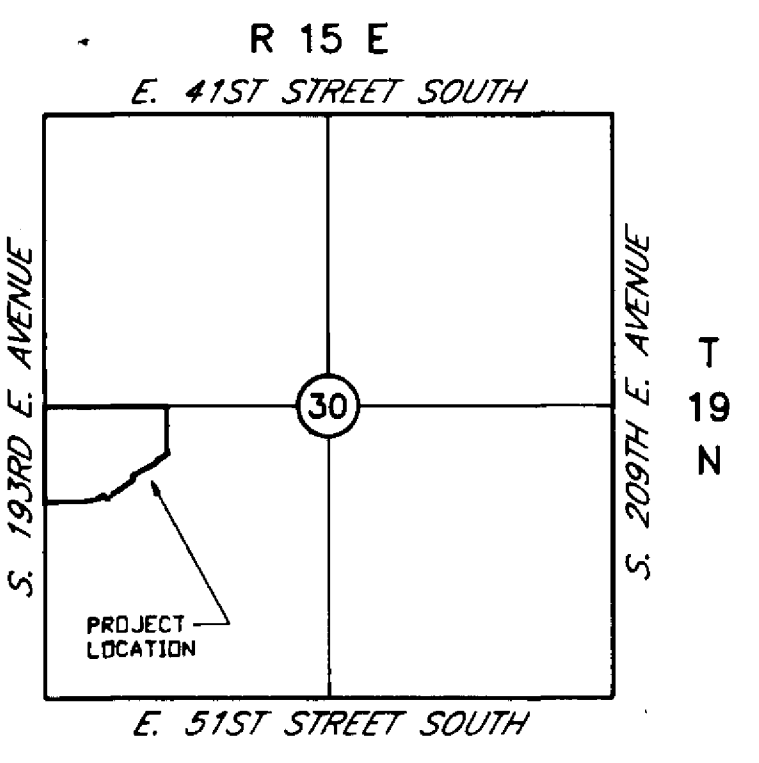
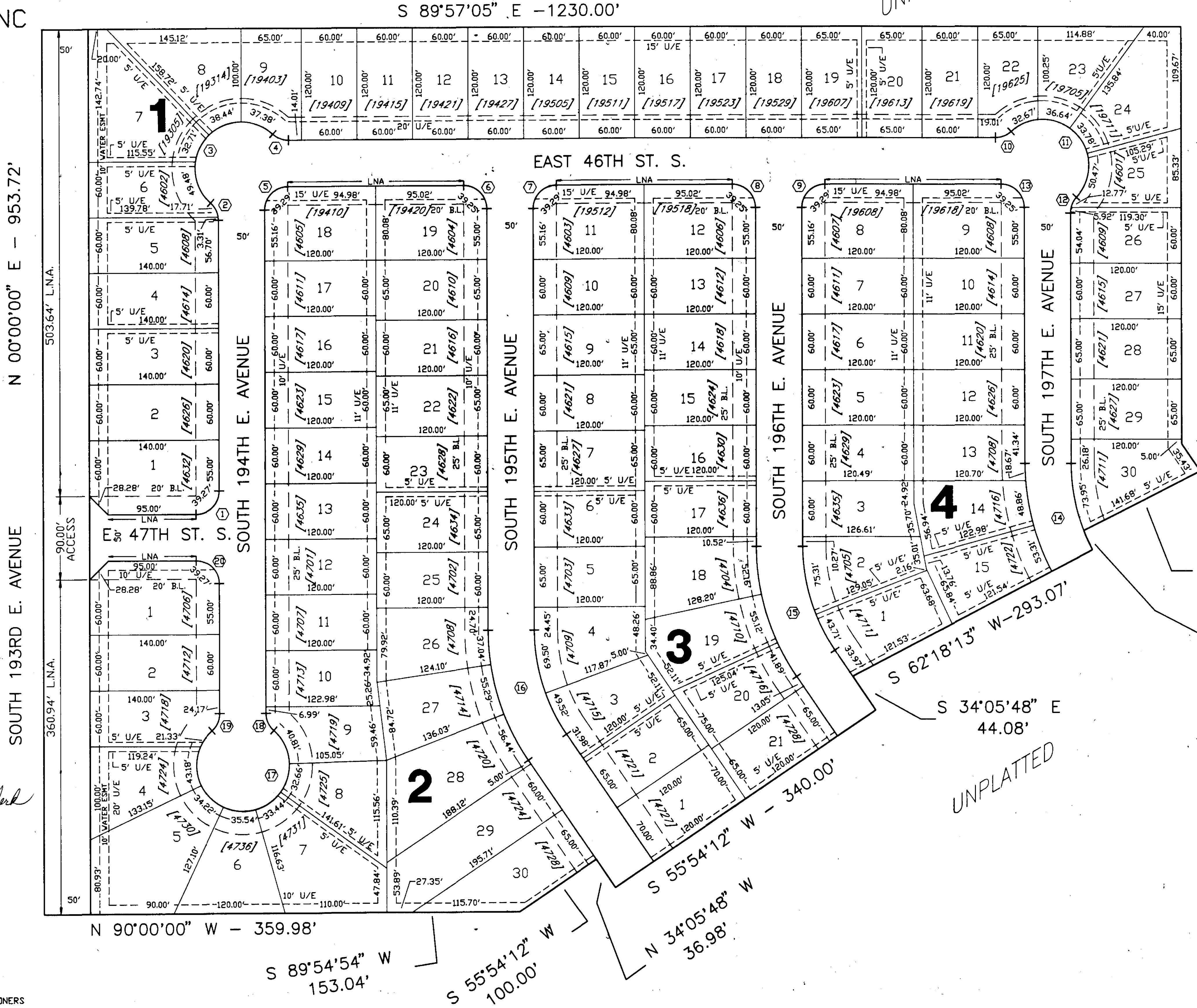
DATE: 9-12-97  
Wagoner County Treasurer  
 WAGONER COUNTY TREASURER

**ACCEPTANCE OF PLAT**  
 BE IT RESOLVED BY THE WAGONER METROPOLITAN AREA PLANNING COMMISSION OF WAGONER COUNTY, STATE OF OKLAHOMA, THAT THE ABOVE SHOWN IS ACCEPTED, AND ADOPTED BY THE WAGONER METROPOLITAN AREA PLANNING COMMISSION.

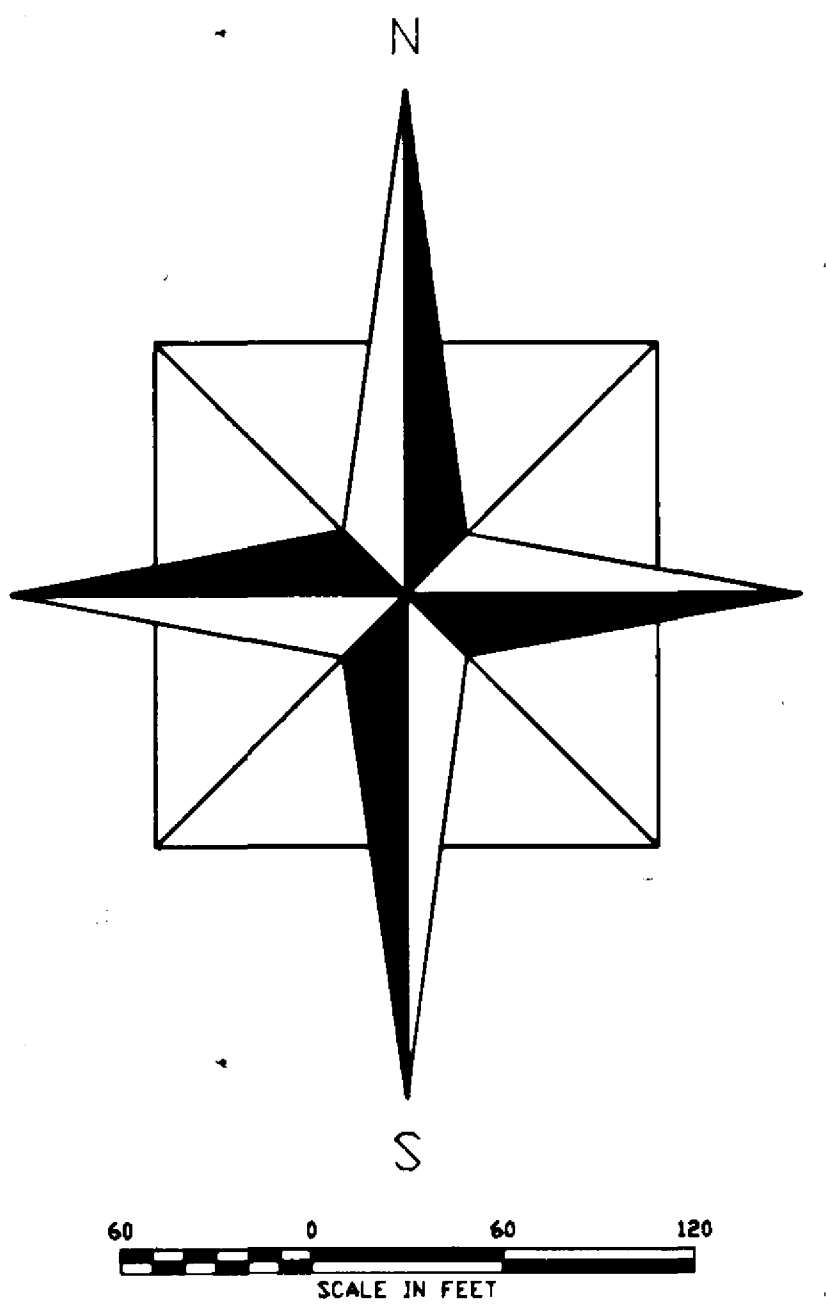
APPROVED BY THE CHAIRMAN OF THE WAGONER METROPOLITAN AREA PLANNING COMMISSION OF WAGONER COUNTY, STATE OF OKLAHOMA  
 DATE: 9-16-97  
Branda Robertson Clerk  
 WAGONER METROPOLITAN AREA PLANNING COMMISSION

**WAGONER COUNTY COMMISSION**  
 BE IT RESOLVED BY THE WAGONER COUNTY BOARD OF COUNTY COMMISSIONERS, WAGONER COUNTY, STATE OF OKLAHOMA, THAT THE ABOVE SHOWN PLAT IS APPROVED.

APPROVED BY THE WAGONER COUNTY BOARD OF COMMISSIONERS WAGONER COUNTY, STATE OF OKLAHOMA  
 DATE: 9-14-97  
Alvin Fuchs  
 CHAIRMAN, WAGONER COUNTY BOARD OF COUNTY COMMISSIONERS



**LOCATION MAP**  
 1,015,691 SQUARE FEET  
 23.32 ACRES  
 96 LOTS



N 00°00'00" E - 450.00'

S 63°05'48" W  
 141.68'

Δ = 06°30'45"  
 R = 200.00'  
 L = 22.73'

**LEGEND**

- N NORTH
- S SOUTH
- E EAST
- W WEST
- B.L. BUILDING LINE
- U/E UTILITY EASEMENT
- L.N.A. LIMITS OF NO ACCESS
- [19619] STREET ADDRESS