

OWNER
S SQUARED, L.L.C.
 2219 E. SKELLY DRIVE
 TULSA, OKLAHOMA 74105
 PHONE: (918) 749-1636

ENGINEER
E D M CONSULTANTS, INC.
 3101 FREE FERRY ROAD
 FORT SMITH, ARKANSAS 72913
 PHONE: (501) 782-0474
 CERTIFICATE OF AUTHORITY CA 1858
 EXPIRATION 6-30-01

SURVEYOR
ANTHONY P. ANDERSON PLS, INC.
 1619 N. A STREET
 FORT SMITH, ARKANSAS 72901
 PHONE: (501) 783-0306
 CERTIFICATE OF AUTHORITY CA 2731 (LS)
 EXPIRATION 6-30-01

WAGONER COUNTY TREASURER

I, *Mary Sue Sedden*, TREASURER FOR THE COUNTY OF WAGONER, STATE OF OKLAHOMA, DO HEREBY STATE THAT ALL BACK TAXES HAVE BEEN PAID ON THE DESCRIBED PROPERTY.

DATE: 9-1-99

Mary Sue Sedden
 WAGONER COUNTY TREASURER

ACCEPTANCE OF PLAT

BE IT RESOLVED BY THE WAGONER METROPOLITAN AREA PLANNING COMMISSION OF WAGONER COUNTY, STATE OF OKLAHOMA, THAT THE ABOVE SHOWN IS ACCEPTED, AND ADOPTED BY THE WAGONER METROPOLITAN AREA PLANNING COMMISSION.

APPROVED BY THE CHAIRMAN OF THE WAGONER METROPOLITAN AREA PLANNING COMMISSION OF WAGONER COUNTY, STATE OF OKLAHOMA

DATE: 9-1-99

Brenda Robertson, Clerk
 WAGONER METROPOLITAN AREA PLANNING COMMISSION

WAGONER COUNTY COMMISSION

BE IT RESOLVED BY THE WAGONER COUNTY BOARD OF COUNTY COMMISSIONERS, WAGONER COUNTY, STATE OF OKLAHOMA, THAT THE ABOVE SHOWN PLAT IS APPROVED.

APPROVED BY THE WAGONER COUNTY BOARD OF COMMISSIONERS WAGONER COUNTY, STATE OF OKLAHOMA

DATE: 9-1-99

M. L. Anderson
 CHAIRMAN, WAGONER COUNTY BOARD OF COUNTY COMMISSIONERS

DEPARTMENT OF ENVIRONMENTAL QUALITY

I CERTIFY I HAVE APPROVED THE APPLICATION AND PLAN FOR A PLAT OF A RESIDENTIAL DEVELOPMENT WHICH IS ON FILE AT THE WAGONER OFFICE OF THE DEPARTMENT OF ENVIRONMENTAL QUALITY, AND HEREBY APPROVE THIS PLAT FOR THE USE OF A PUBLIC WATER SYSTEM AND A PUBLIC SEWAGE SYSTEM.

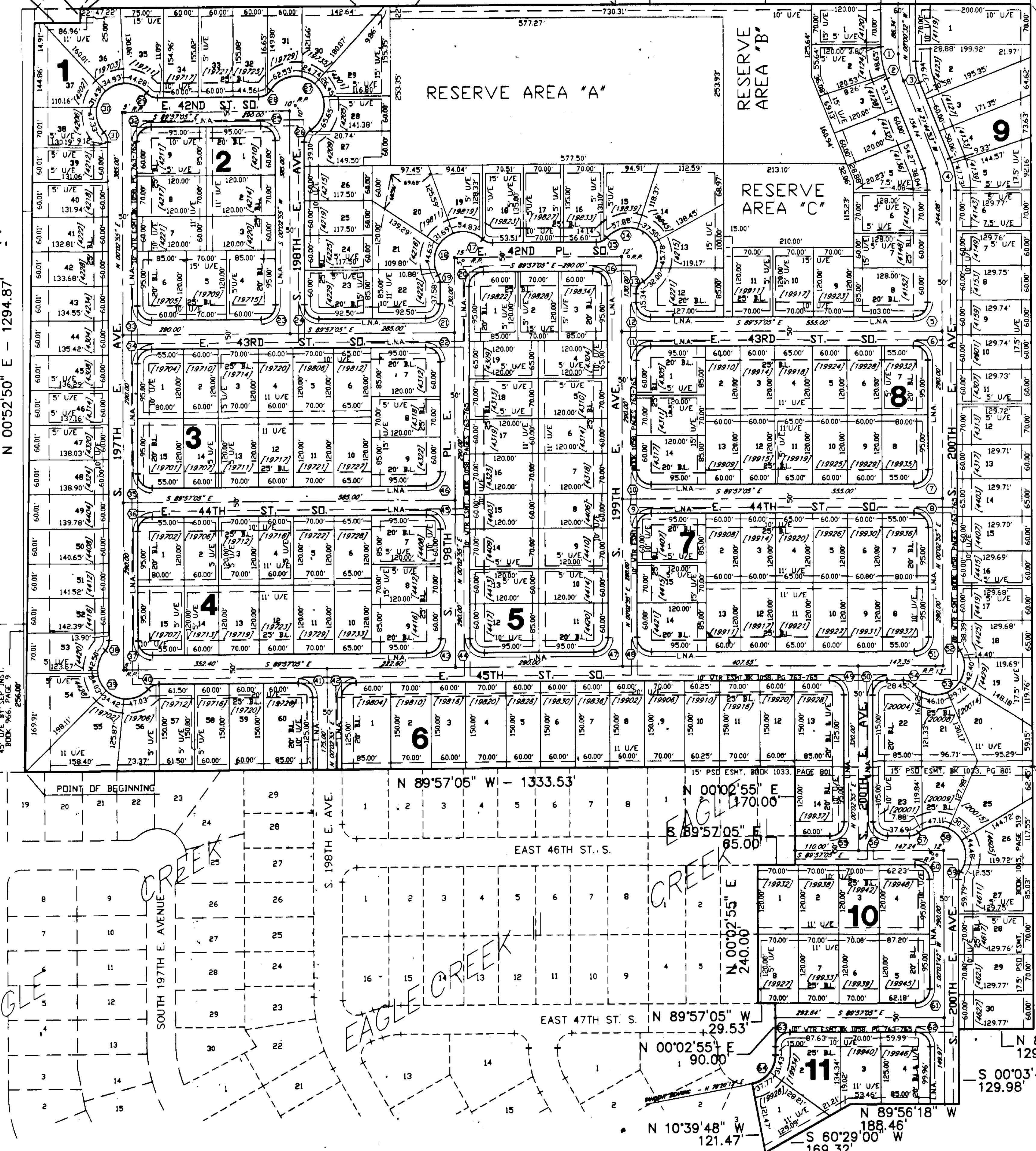
DATE: 9-1-99

Chad Keller
 CHAD KELLER
 ENVIRONMENTAL SPECIALIST SUPERVISOR
 OKLAHOMA DEPARTMENT OF ENVIRONMENTAL QUALITY

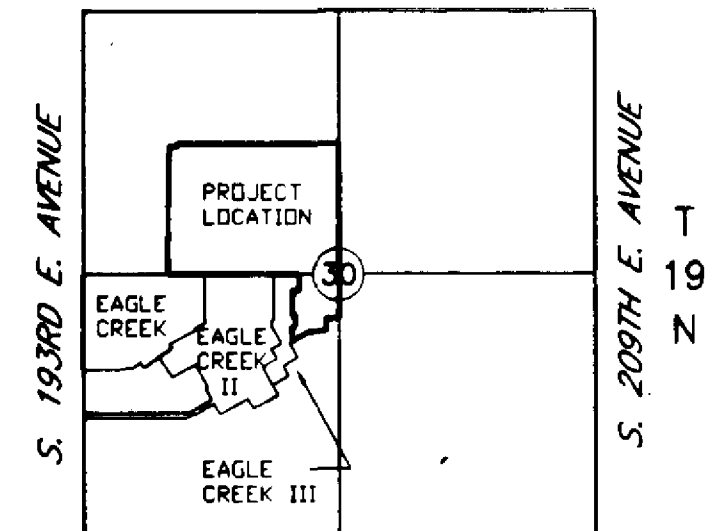
EAGLE CREEK IV

A PART OF THE W/2 OF SECTION 30, TOWNSHIP 19 NORTH, RANGE 15 EAST, COUNTY OF WAGONER, OKLAHOMA

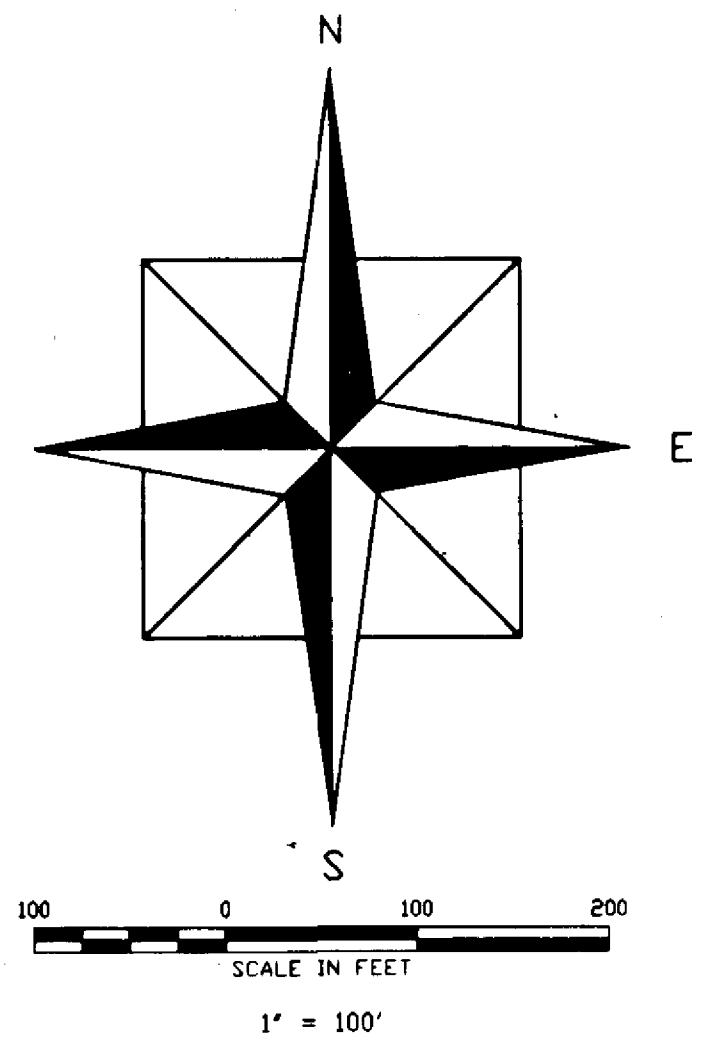
N 00°00'32" W 25.00'
 N 89°59'28" E 79.87'
 N 89°59'28" E - 1647.03'



R 15 E
 E. 41ST STREET SOUTH



NORTHEAST CORNER
 S/2 NW/4 SECTION 30
LOCATION MAP
 2,545,151 SQUARE FEET
 58.43 ACRES
 204 LOTS



UNPLATTED

CURVE TABLE							
POLYGON NUMBER	RADIUS	DELTA	LENGTH	POLYGON NUMBER	RADIUS	DELTA	LENGTH
1	150.00	21°44'21"	56.91	33	25.00	90°00'00"	39.27
2	125.00	21°44'21"	47.43	34	25.00	90°00'00"	39.27
3	100.00	21°44'21"	37.94	35	25.00	90°00'00"	39.27
4	75.00	21°44'21"	28.45	36	25.00	90°00'00"	39.27
5	50.00	21°44'21"	18.96	37	25.00	90°00'00"	39.27
6	25.00	21°44'21"	9.47	38	25.00	90°00'00"	39.27
7	15.00	21°44'21"	5.69	39	25.00	181°01'23"	157.97
8	10.00	21°44'21"	3.79	40	25.00	48°11'23"	21.03
9	7.50	21°44'21"	2.84	41	25.00	90°00'00"	39.27
10	5.00	21°44'21"	1.89	42	25.00	90°00'00"	39.27
11	2.50	21°44'21"	0.94	43	25.00	90°00'00"	39.27
12	1.50	21°44'21"	0.57	44	25.00	90°00'00"	39.27
13	1.00	21°44'21"	0.38	45	25.00	90°00'00"	39.27
14	0.75	21°44'21"	0.28	46	25.00	90°00'00"	39.27
15	0.50	21°44'21"	0.19	47	25.00	90°00'00"	39.27
16	0.38	21°44'21"	0.14	48	25.00	90°00'00"	39.27
17	0.25	21°44'21"	0.09	49	25.00	90°00'00"	39.27
18	0.19	21°44'21"	0.07	50	25.00	90°00'00"	39.27
19	0.14	21°44'21"	0.05	51	25.00	90°00'00"	39.27
20	0.09	21°44'21"	0.03	52	25.00	32°51'36"	14.34
21	0.07	21°44'21"	0.02	53	25.00	171°02'56"	149.27
22	0.05	21°44'21"	0.01	54	25.00	48°11'23"	21.03
23	0.03	21°44'21"	0.01	55	25.00	90°00'00"	39.27
24	0.02	21°44'21"	0.00	56	25.00	90°00'00"	39.27
25	0.01	21°44'21"	0.00	57	25.00	39°20'45"	17.17
26	0.00	21°44'21"	0.00	58	50.00	163°36'13"	142.77
27	0.00	21°44'21"	0.00	59	25.00	34°14'41"	14.94
28	0.00	21°44'21"	0.00	60	25.00	90°00'47"	39.28
29	0.00	21°44'21"	0.00	61	25.00	89°59'13"	39.26
30	0.00	21°44'21"	0.00	62	25.00	90°00'47"	39.28
31	0.00	21°44'21"	0.00	63	25.00	90°00'00"	39.27
32	0.00	21°44'21"	0.00	64	50.00	79°17'17"	69.19

DATA IS CENTERLINE INFORMATION
 CENTER OF SECTION 30

BASIS OF BEARINGS - WEST SECTION LINE IS ASSUMED DUE NORTH

LEGEND

- N NORTH
- S SOUTH
- E EAST
- W WEST
- B.L. BUILDING LINE
- U/E UTILITY EASEMENT
- L.N.A. LIMITS OF NO ACCESS
- [19619] STREET ADDRESS

S 00°03'20" W - 1321.47'

S 00°03'20" W - 455.03'

S 193RD E. AVE.

N 00°52'50" E - 1294.87'

UNPLATTED

UNPLATTED

UNPLATTED