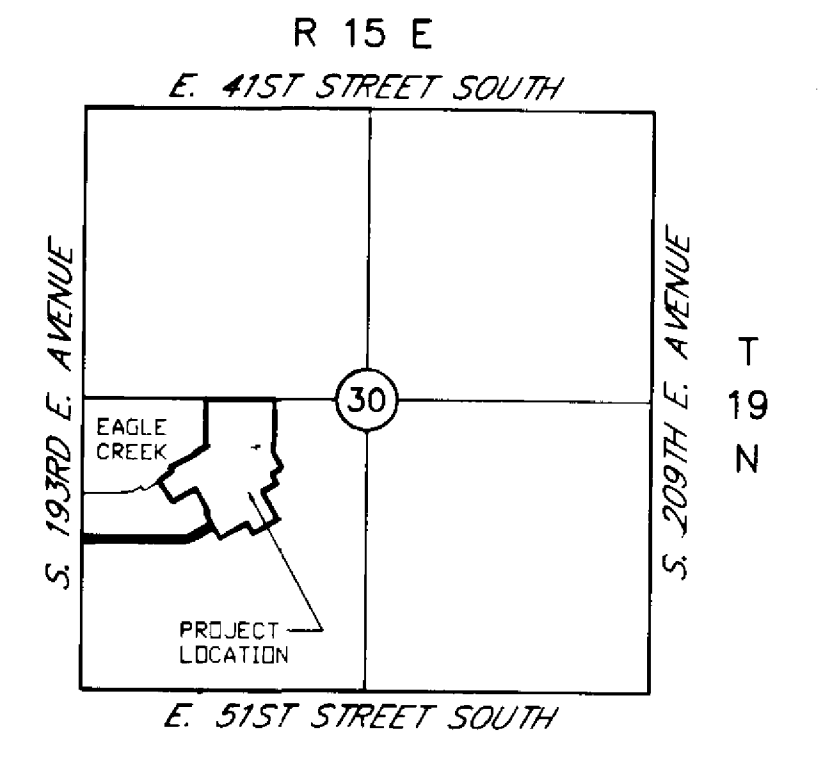
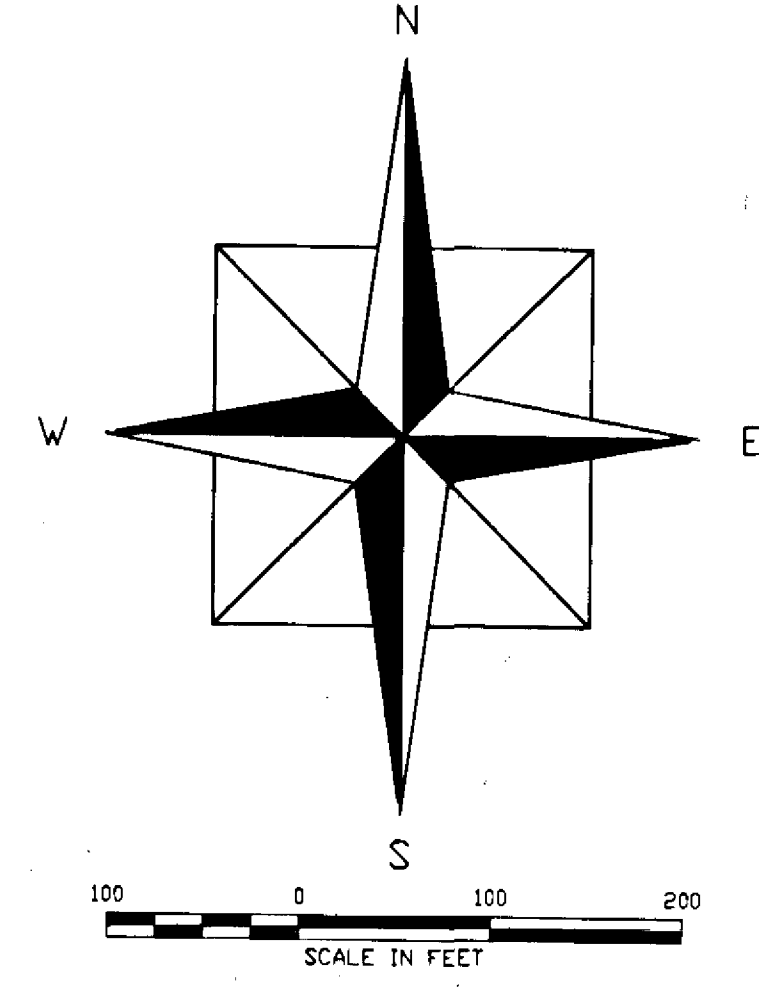


OWNER
EAGLE CREEK DEVELOPMENT, L.L.C.

2219 E. SKELLY DRIVE
 TULSA, OKLAHOMA 74105
 PHONE: (918) 749-1636

EAGLE CREEK II

A PART OF THE SW/4 OF SECTION 30, TOWNSHIP 19 NORTH,
 RANGE 15 EAST, COUNTY OF WAGONER, OKLAHOMA



LOCATION MAP
 1,127,389 SQUARE FEET
 25.88 ACRES
 102 LOTS

ENGINEER
TUTTLE & ASSOCIATES, INC

9718 E. 55TH PL
 TULSA, OKLAHOMA 74146
 PHONE: (918) 663-5567
 CERTIFICATE OF AUTHORITY CA 465
 EXPIRATION 6-30-99

WAGONER COUNTY TREASURER
 I, *Mary Sue Ladd*, TREASURER FOR THE COUNTY OF WAGONER,
 STATE OF OKLAHOMA, DO HEREBY STATE THAT ALL BACK TAXES HAVE
 BEEN PAID ON THE DESCRIBED PROPERTY.

DATE: *Aug. 21, 1998*
Mary Sue Ladd
 WAGONER COUNTY TREASURER

ACCEPTANCE OF PLAT
 BE IT RESOLVED BY THE WAGONER METROPOLITAN AREA PLANNING
 COMMISSION OF WAGONER COUNTY, STATE OF OKLAHOMA, THAT THE
 ABOVE SHOWN IS ACCEPTED AND ADOPTED BY THE WAGONER
 METROPOLITAN AREA PLANNING COMMISSION.
 APPROVED BY THE CHAIRMAN OF THE WAGONER METROPOLITAN
 AREA PLANNING COMMISSION OF WAGONER COUNTY, STATE OF OKLAHOMA

DATE: *8-21-98*
Brenda Babin
 WAGONER METROPOLITAN
 AREA PLANNING COMMISSION

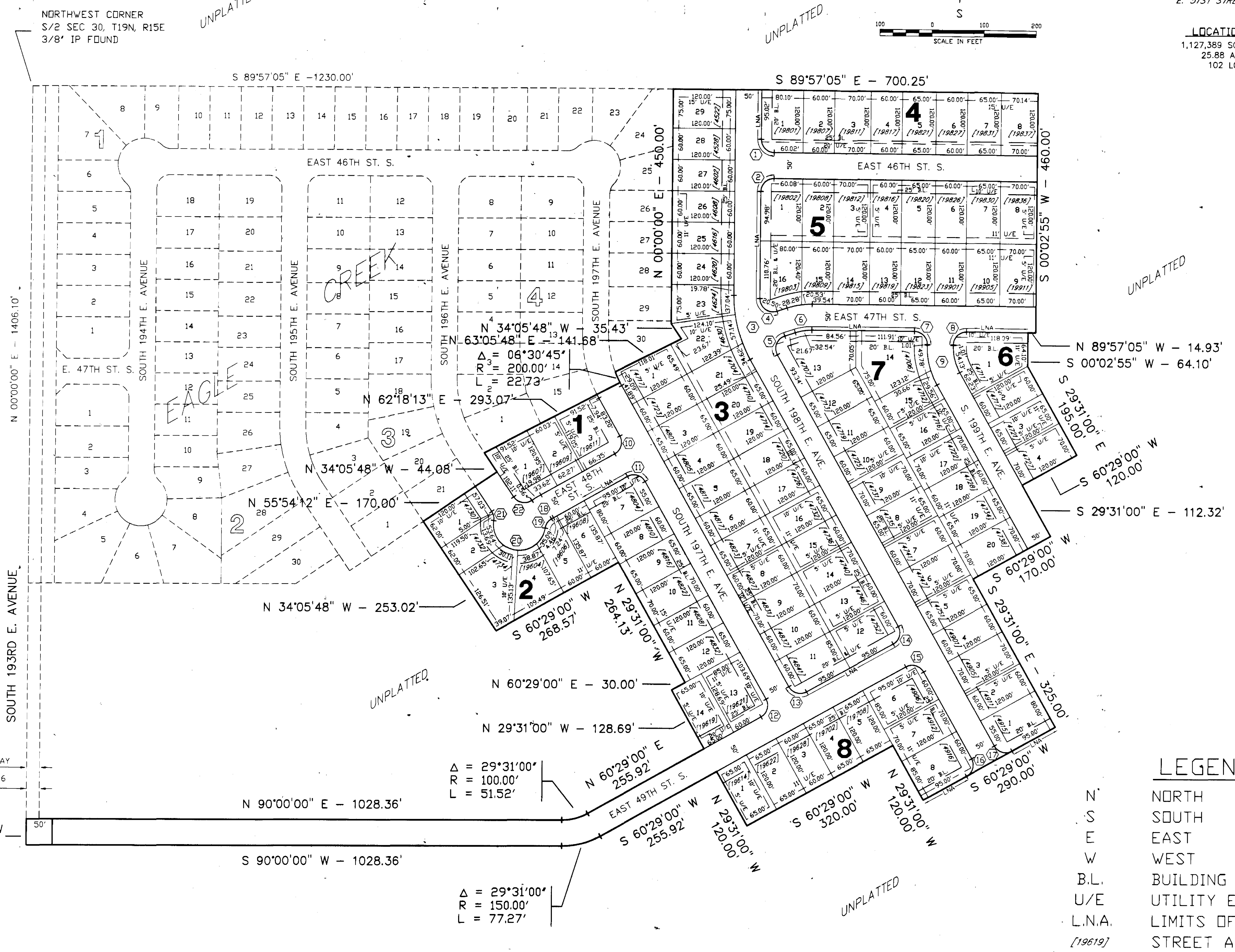
WAGONER COUNTY COMMISSION
 BE IT RESOLVED BY THE WAGONER COUNTY BOARD OF COUNTY
 COMMISSIONERS, WAGONER COUNTY, STATE OF OKLAHOMA, THAT THE
 ABOVE SHOWN PLAT IS APPROVED.
 APPROVED BY THE WAGONER COUNTY BOARD OF COMMISSIONERS
 WAGONER COUNTY, STATE OF OKLAHOMA

DATE: *8-24-98*
Allen Farley
 CHAIRMAN, WAGONER COUNTY
 BOARD OF COUNTY COMMISSIONERS

DEPARTMENT OF ENVIRONMENTAL QUALITY
 I CERTIFY I HAVE APPROVED THE APPLICATION AND PLAN FOR A PLAT OF A
 RESIDENTIAL DEVELOPMENT WHICH IS ON FILE AT THE WAGONER OFFICE OF THE
 DEPARTMENT OF ENVIRONMENTAL QUALITY, AND HEREBY APPROVE THIS PLAT FOR
 THE USE OF A PUBLIC WATER SYSTEM AND A PUBLIC SEWAGE SYSTEM.
 DATE: *8-24-98*
Rick Austin
 RICK AUSTIN
 ENVIRONMENTAL SPECIALIST SUPERVISOR
 OKLAHOMA DEPARTMENT OF ENVIRONMENTAL QUALITY

CURVE TABLE			
POLYGON NUMBER	RADIUS	DELTA	LENGTH
1	25.00'	89°57'05"	39.25'
2	25.00'	90°02'55"	39.29'
3	225.00'	29°31'00"	115.91'
4	25.00'	108°35'40"	47.38'
5	25.00'	100°55'20"	44.04'
6	125.00'	18°38'35"	40.67'
7	25.00'	90°00'00"	39.27'
8	25.00'	90°00'00"	39.27'
9	125.00'	30°43'26"	67.03'
10	25.00'	90°00'00"	39.27'
11	25.00'	90°00'00"	39.27'
12	25.00'	90°00'00"	39.27'
13	25.00'	90°00'00"	39.27'
14	25.00'	90°00'00"	39.27'
15	25.00'	90°00'00"	39.27'
16	25.00'	90°00'00"	39.27'
17	25.00'	90°00'00"	39.27'
18	225.00'	04°34'48"	17.99'
19	25.00'	51°11'41"	22.34'
20	50.00'	180°13'28"	157.71'
21	25.00'	42°50'00"	18.69'
22	25.00'	90°00'00"	39.27'

24.75 STATUTORY RIGHT OF WAY
 70' ORDINANCE BOOK 504, PAGE 436



LEGEND
 N' NORTH
 S' SOUTH
 E' EAST
 W' WEST
 B.L. BUILDING LINE
 U/E UTILITY EASEMENT
 L.N.A. LIMITS OF NO ACCESS
 [19619] STREET ADDRESS