

Plot Cabinet 3  
287-A+B.

1992 NOV -9 PM 12:16

P. U. D. NO. 66

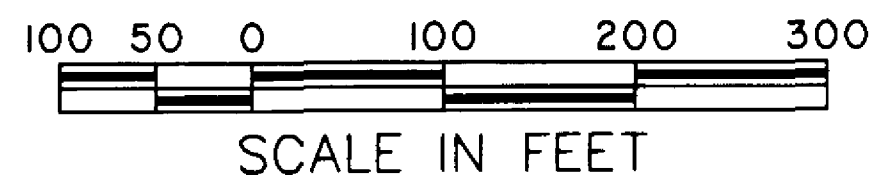
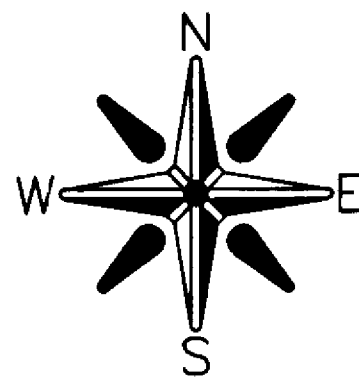
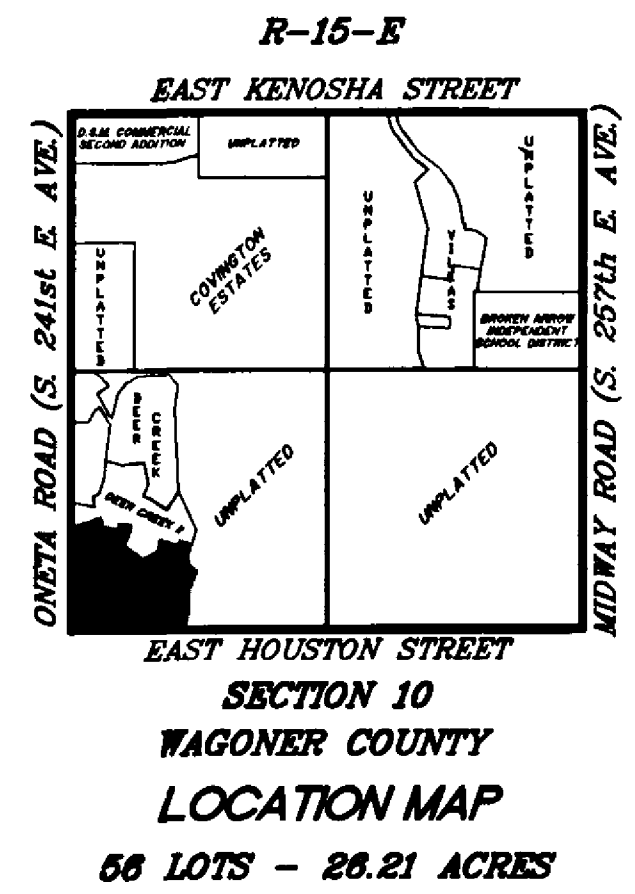
# DEER CREEK III AT FOREST RIDGE

AN ADDITION TO THE CITY OF BROKEN ARROW,  
BEING A SUBDIVISION IN A PART OF THE SW/4  
OF SECTION 10, T-18-N, R-15-E, WAGONER  
COUNTY, STATE OF OKLAHOMA.

**OWNER:**  
**The Robson Companies, Inc.**  
7501 East Kenosha Street  
Broken Arrow, Oklahoma 74014  
Phone: (918) 357-2787

**ENGINEER:**  
**Tulsa Engineering & Planning Associates, Inc.**  
8209 East 63rd Place South  
Tulsa, Oklahoma 74133  
Phone: (918) 252-9621

APPROVED: 0-5-92 by the City  
Council of the City of Broken Arrow,  
Oklahoma.  
*James C. Reynolds (Mayor)*  
*Brenda R. Rishart (City Clerk)*  
Attest: City Clerk



**BASIS OF BEARINGS:**

The basis for bearings is based on an assumed bearing of N 00°00'00" W along the west line of Section 10, T-18-N, R-15-E, of the Indian Base and Meridian, Wagoner County, State of Oklahoma.

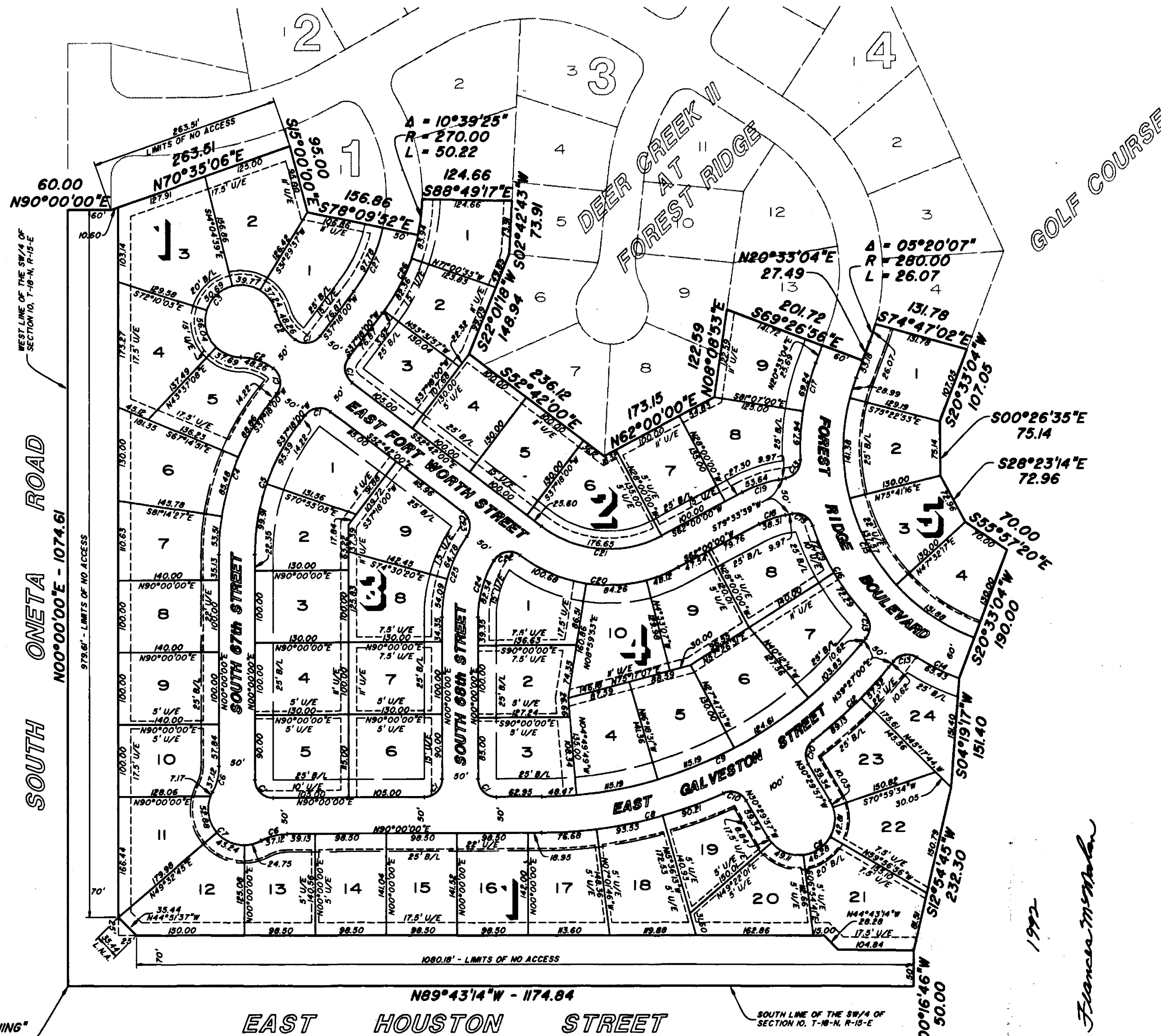
**MONUMENTATION:**

1. A 5/8" x 18" deformed bar with a yellow plastic cap stamped "RLS 1253" to be set at all lot boundary corners, prior to recordation, unless noted otherwise.
2. A 3/8" x 18" deformed bar with a yellow plastic cap stamped "RLS 1253" to be set at all lot corners after completion of improvements, unless noted otherwise.
3. A 3/8" x 18" deformed bar with a yellow plastic cap stamped "RLS 1253" to be set at all street centerline intersections, points of curve, points of tangent, points of compound curve, points of reverse curve, center of cul-de-sacs and center of eyebrows, after completion of improvements, unless noted otherwise.

**BENCHMARK:**

Top of brass cap set on top of curb approximately 18 feet east of handicap access ramp in the southeast quadrant of Forest Ridge Boulevard and East Galveston Street. Elevation = 646.53 (N.G.V.D.)

**"POINT OF BEGINNING"**  
THE SOUTHWEST CORNER  
OF THE SW/4 OF SECTION 10,  
T-18-N, R-15-E, WAGONER  
COUNTY, OKLAHOMA  
(FOUND 5/8" DEFORMED BAR WITH A  
YELLOW PLASTIC CAP STAMPED "RLS 1253")



**LEGEND**

- BK. = BOOK
- B/L = BUILDING LINE
- PGS. = PAGES
- U/E = UTILITY EASEMENT
- L.N.A. = LIMITS OF NO ACCESS

**CURVE TABLE**

NO.	DELTA	RADIUS	ARC
C1	90°00'00"	25.00	39.27
C2	36°52'12"	75.00	48.26
C3	253°44'23"	50.00	221.43
C4	37°18'00"	350.00	227.85
C5	37°18'00"	300.00	195.30
C6	28°21'27"	75.00	37.12
C7	146°22'55"	50.00	128.03
C8	23°52'24"	625.00	260.42
C9	50°33'00"	575.00	507.30
C10	83°22'27"	25.00	36.38
C11	180°00'00"	50.00	157.08
C12	13°25'30"	625.00	146.45
C13	82°07'35"	25.00	35.83
C14	11°01'31"	340.00	65.43
C15	90°00'00"	280.00	439.82
C16	24°51'49"	340.00	144.58
C17	23°07'01"	340.00	137.18
C18	17°33'39"	125.00	38.31
C19	17°33'39"	175.00	53.64
C20	65°08'15"	205.00	233.06
C21	65°18'00"	155.00	176.65
C22	95°41'17"	25.00	41.75
C23	86°45'13"	25.00	37.85
C24	31°26'59"	150.00	82.34
C25	34°03'13"	200.00	118.87
C26	25°27'52"	270.00	120.00
C27	25°27'52"	220.00	97.78

BLOCKS	LOTS	PROPOSED FINISH FLOOR ELEVATION	TOP OF RIM ELEVATION OF UPSTREAM SANITARY MANHOLE
BLOCK 1	1	640.7	638.4
	2	640.8	638.4
	3	640.9	642.5
	4	641.3	642.5
	5	641.3	640.8
	6	642.7	642.4
	7	644.3	647.8
	8	645.7	647.8
	9	648.7	647.8
	10	652.0	651.4
	11	652.9	651.4
	12	652.9	653.3
	13	652.5	653.3
	14	649.3	648.6
	15	646.9	644.9
	16	646.3	648.2
	17	648.6	648.2
	18	650.1	651.9
	19	650.0	651.9
	20	647.7	647.8
	21	646.6	645.5
	22	646.9	645.5
	23	650.0	648.9
	24	649.5	648.9
BLOCK 2	1	639.1	640.9
	2	639.5	640.9
	3	640.0	639.8
	4	642.5	643.9
	5	643.0	643.9
	6	647.5	646.3
	7	648.5	646.3
	8	650.0	646.3
	9	649.0	646.3
BLOCK 3	1	641.9	642.4
	2	643.6	644.9
	3	654.0	644.9
	4	647.0	646.7
	5	650.4	646.7
	6	646.4	646.7
	7	645.0	646.7
	8	644.4	645.3
9	644.1	644.9	
BLOCK 4	1	644.5	645.3
	2	645.4	647.9
	3	648.2	647.9
	4	649.5	648.8
	5	650.1	648.8
	6	650.4	649.3
	7	650.6	649.3
	8	650.6	649.3
	9	648.6	649.3
	10	647.6	648.8
BLOCK 5	1	648.6	648.3
	2	650.5	649.4
	3	650.5	647.1
	4	648.7	647.1

If the actual finish floor elevation is lower than the top of rim elevation of the upstream manhole, it shall be the builders responsibility to install a backwater device near the building according to Broken Arrow Ordinance No. 1012, Section 24-100 adopted August 2, 1982.