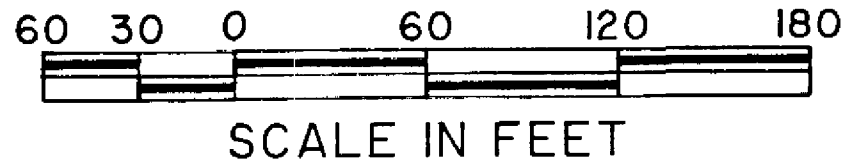
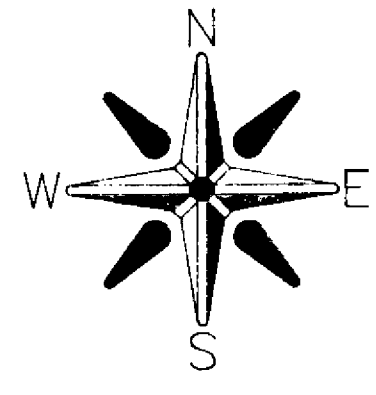


DEER CREEK AT FOREST RIDGE

AN ADDITION TO THE CITY OF BROKEN ARROW, BEING A SUBDIVISION OF A PART OF THE W/2 SW/4 OF SECTION 10, T-18-N, R-15-E, WAGONER COUNTY, OKLAHOMA



"POINT OF BEGINNING"
NORTHWEST CORNER OF THE W/2 SW/4 OF SECTION 10, T-18-N, R-15-E, WAGONER COUNTY, OK (FOUND 5/8" DEFORMED BAR WITH A YELLOW PLASTIC CAP STAMPED "RLS 1253").

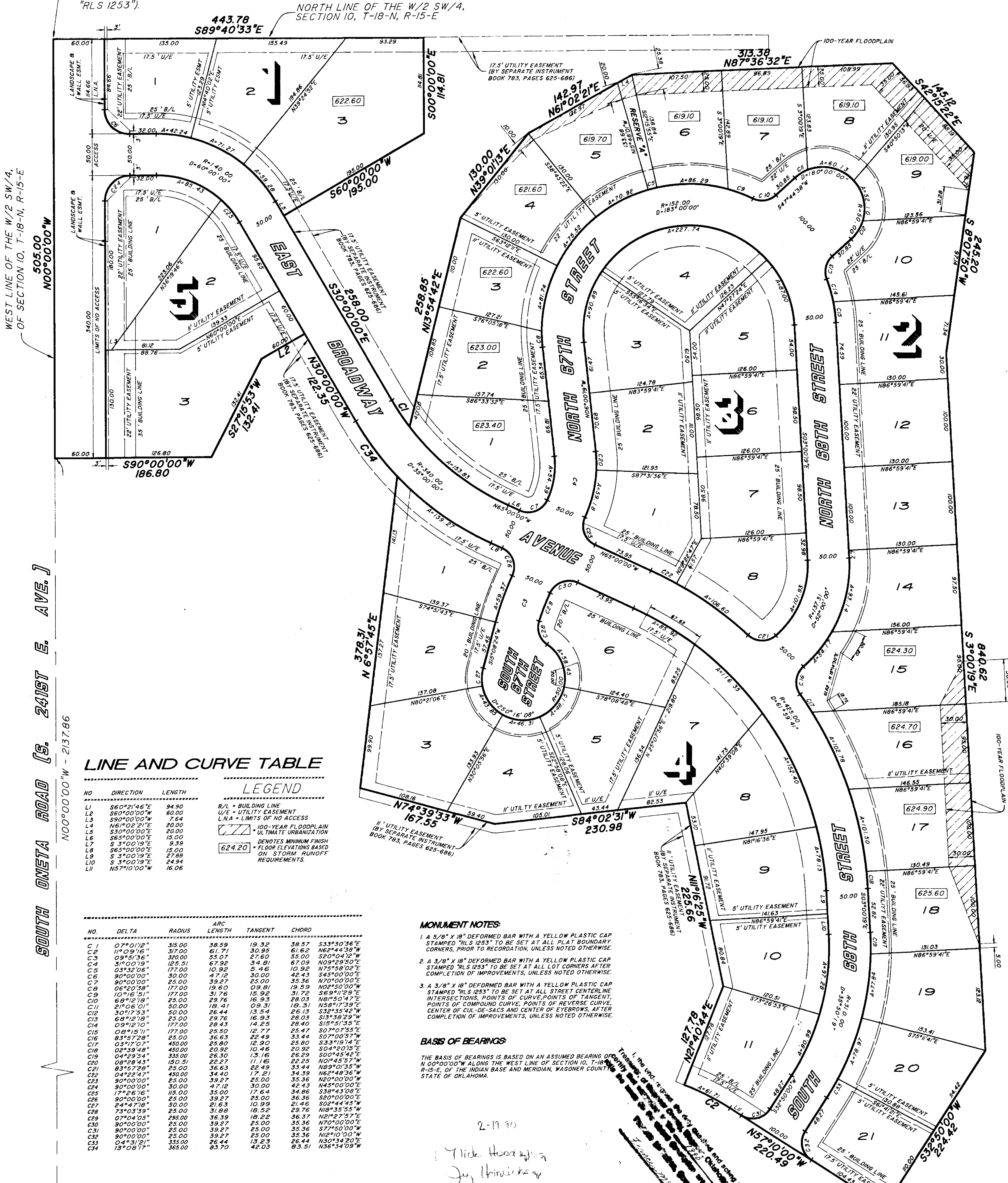
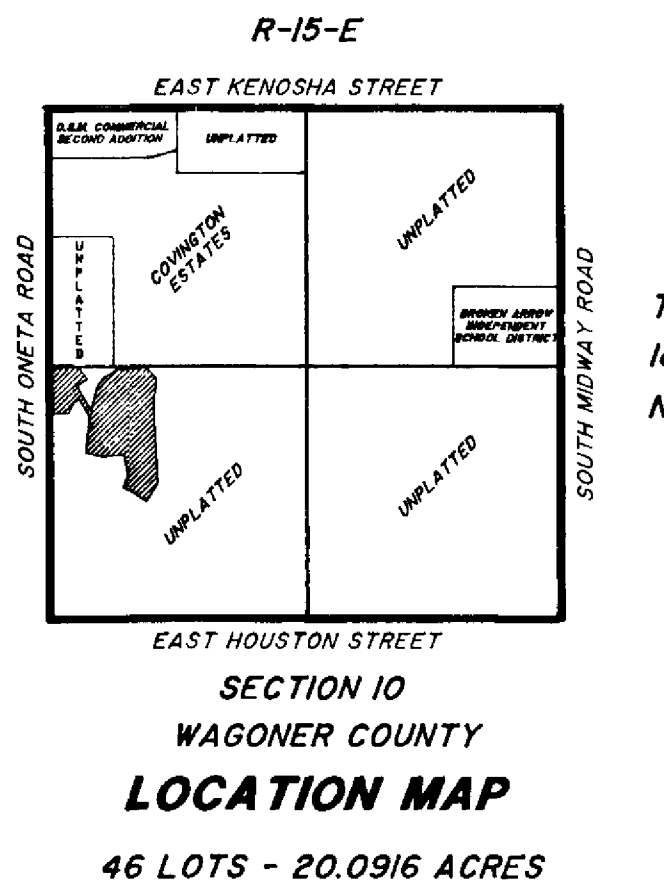
OWNER:
THE ROBSON COMPANIES, INC.

7501 EAST KENOSHA STREET
BROKEN ARROW, OKLAHOMA 74014
PHONE: (918) 357-2787

ENGINEER:

TULSA ENGINEERING & PLANNING ASSOCIATES, INC.

8209 EAST 63rd PLACE SOUTH
TULSA, OKLAHOMA 74133
PHONE: (918) 252-9621



LINE AND CURVE TABLE

NO.	DIRECTION	LENGTH
L1	S60°21'46"E	94.90
L2	S60°00'00"W	60.00
L3	S30°00'00"W	75.4
L4	N61°02'21"E	20.00
L5	S30°00'00"E	20.00
L6	S63°00'00"E	15.00
L7	S1°00'19"E	9.39
L8	S65°00'00"E	16.00
L9	S3°00'19"E	27.88
L10	S3°00'19"E	14.94
L11	N57°10'00"W	16.06

NO.	DELTA	RADIUS	ARC LENGTH	TANGENT	CHORD
C1	07°01'16"	315.00	38.59	19.32	38.57
C2	11°09'16"	317.00	61.71	30.95	61.62
C3	09°57'36"	320.00	55.07	27.60	55.00
C4	31°00'19"	125.51	67.92	34.81	67.09
C5	03°32'06"	177.00	10.92	5.46	10.92
C6	S0°00'00"E	30.00	47.12	30.00	42.43
C7	S0°00'00"E	25.00	39.27	25.00	35.36
C8	06°20'38"	177.00	19.60	9.81	19.59
C9	10°16'21"	177.00	31.76	15.92	31.72
C10	6°01'19"	25.00	29.76	16.93	28.03
C11	21°05'01"	50.00	18.41	9.31	18.31
C12	30°17'53"	50.00	26.44	13.54	26.13
C13	6°01'19"	50.00	29.76	16.93	28.03
C14	09°21'01"	177.00	28.43	14.25	28.40
C15	08°15'11"	177.00	25.50	12.77	25.47
C16	83°42'28"	25.00	36.63	22.49	33.44
C17	03°17'07"	450.00	25.00	12.90	25.80
C18	02°39'48"	450.00	20.38	10.46	20.92
C19	04°02'54"	335.00	25.00	13.16	26.29
C20	08°28'43"	150.51	22.27	11.16	22.25
C21	83°57'28"	25.00	36.63	22.49	33.44
C22	04°29'47"	450.00	34.00	17.21	34.39
C23	S0°00'00"E	25.00	39.27	25.00	35.36
C24	S0°00'00"E	30.00	47.12	30.00	42.43
C25	17°21'01"	150.00	35.00	17.64	34.86
C26	S0°00'00"E	25.00	39.27	25.00	35.36
C27	24°47'18"	50.00	21.63	10.99	21.95
C28	73°03'39"	25.00	31.68	18.52	29.76
C29	07°04'05"	285.00	36.39	18.22	36.37
C30	S0°00'00"E	25.00	39.27	25.00	35.36
C31	S0°00'00"E	25.00	39.27	25.00	35.36
C32	S0°00'00"E	25.00	39.27	25.00	35.36
C33	04°31'21"	335.00	26.44	13.54	26.44
C34	13°09'17"	365.00	63.70	42.03	63.51

MONUMENT NOTES:

- A 3/8" x 18" DEFORMED BAR WITH A YELLOW PLASTIC CAP STAMPED "RLS 1253" TO BE SET AT ALL LOT CORNERS AFTER COMPLETION OF IMPROVEMENTS, UNLESS NOTED OTHERWISE.
- A 3/8" x 18" DEFORMED BAR WITH A YELLOW PLASTIC CAP STAMPED "RLS 1253" TO BE SET AT ALL STREET CENTERLINE INTERSECTIONS, POINTS OF CURVE, POINTS OF TANGENT, POINTS OF COMPOUND CURVE, POINTS OF REVERSE CURVE, CENTER OF CUI-DE-SACS AND CENTER OF E-TIEBROWS, AFTER COMPLETION OF IMPROVEMENTS, UNLESS NOTED OTHERWISE.
- A 3/8" x 18" DEFORMED BAR WITH A YELLOW PLASTIC CAP STAMPED "RLS 1253" TO BE SET AT ALL STREET CENTERLINE INTERSECTIONS, POINTS OF CURVE, POINTS OF TANGENT, POINTS OF COMPOUND CURVE, POINTS OF REVERSE CURVE, CENTER OF CUI-DE-SACS AND CENTER OF E-TIEBROWS, AFTER COMPLETION OF IMPROVEMENTS, UNLESS NOTED OTHERWISE.

BASIS OF BEARINGS:

THE BASIS OF BEARINGS IS BASED ON AN ASSUMED BEARING OF N 00°00'00"W ALONG THE WEST LINE OF SECTION 10, T-18-N, R-15-E, OF THE INDIAN BASE AND MERIDIAN, WAGONER COUNTY, STATE OF OKLAHOMA.

SOUTHWEST CORNER OF SECTION 10, T-18-N, R-15-E, WAGONER COUNTY, OK. (FOUND 5/8" DEFORMED BAR WITH A YELLOW PLASTIC CAP STAMPED "RLS 1253").