

STATE OF OKLAHOMA
WAGONER COUNTY
1992 NOV -9 AM 11:59

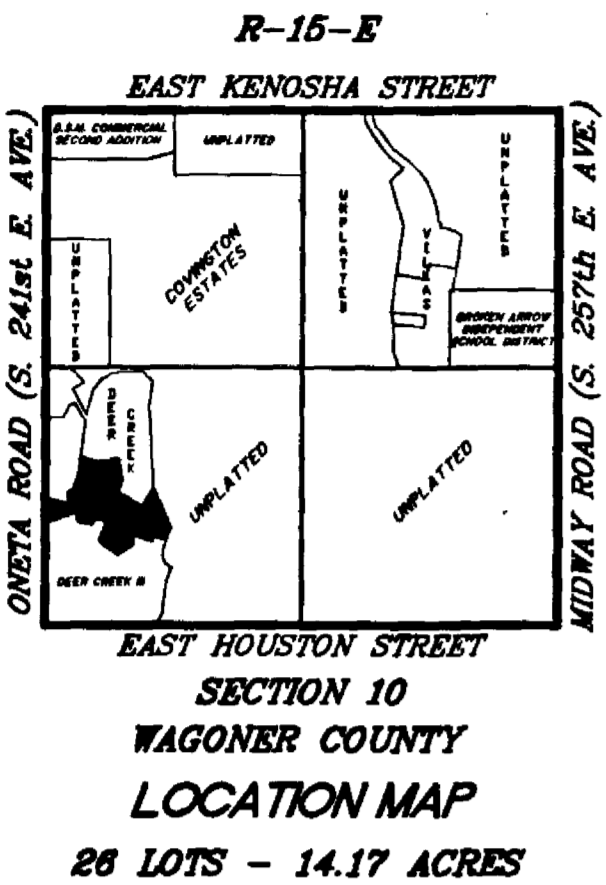
P. U. D. NO. 66

DEER CREEK II AT FOREST RIDGE

AN ADDITION TO THE CITY OF BROKEN ARROW, BEING A
SUBDIVISION OF A PART OF THE W/2 SW/4 OF SECTION 10,
T-18-N, R-15-E, WAGONER COUNTY, STATE OF OKLAHOMA

Plat Cabinet
3-286-A+B

NORTHWEST CORNER OF THE W/2
SW/4 OF SECTION 10, T-18-N,
R-15-E, WAGONER COUNTY, OK.
(FOUND 5/8" DEFORMED BAR WITH
A YELLOW PLASTIC CAP STAMPED
"RLS 1253")



CURVE TABLE			
NO.	DELTA	RADIUS	ARC
C1	90°00'00"	30.00	47.12
C2	90°00'00"	30.00	47.12
C3	89°30'46"	25.00	39.06
C4	90°00'00"	25.00	39.27
C5	80°59'46"	25.00	35.34
C6	80°59'46"	25.00	35.34
C7	90°00'00"	25.00	39.27
C8	90°00'00"	25.00	39.27
C9	07°27'27"	274.77	35.76
C10	07°59'06"	324.77	45.26
C11	29°30'00"	348.66	179.51
C12	29°00'46"	562.93	285.05

LEGEND	
BK	BOOK
B/L	BUILDING LINE
P/S	PAGES
U/E	UTILITY EASEMENT
L.N.A.	LIMITS OF NO ACCESS

BLOCK	LOTS	PROPOSED FINISH FLOOR ELEVATION	TOP OF RIM ELEVATION OF UPSTREAM SANITARY MANHOLE
BLOCK 1	1	637.2	638.2
BLOCK 2	1	636.0	634.7
	2	636.5	634.7
	3	636.7	634.2
	4	633.0	632.6
	5	633.2	630.0
	6	633.2	631.3
	7	634.4	633.7
	8	636.1	633.7
BLOCK 3	1	638.8	639.1
	2	637.7	639.1
	3	639.5	639.1
	4	640.5	639.1
	5	641.6	639.1
	6	642.4	640.9
	7	642.8	643.9
	8	642.9	646.3
	9	643.9	641.8
	10	641.3	641.8
	11	640.3	639.1
	12	643.6	641.8
	13	647.7	641.8
BLOCK 4	1	640.1	641.2
	2	642.0	641.2
	3	644.3	645.7
	4	646.7	645.7

If the actual finish floor elevation is lower than the top of rim elevation of the upstream manhole, it shall be the builders responsibility to install a backwater device near the building according to Broken Arrow Ordinance No. 1012, Section 24-100 adopted August 2, 1992.

OWNER:
The Robson Companies, Inc.
7501 East Kenosha Street
Broken Arrow, Oklahoma 74014
Phone: (918) 357-2787

ENGINEER:
Tulsa Engineering & Planning Associates, Inc.
8209 East 63rd Place South
Tulsa, Oklahoma 74133
Phone: (918) 252-9621

BASIS OF BEARINGS:
The basis for bearings is based on an assumed bearing of N 00°00'00"W along the west line of Section 10, T-18-N, R-15-E, of the Indian Base and Meridian, Wagoner County, State of Oklahoma.

MONUMENTATION:

- A 5/8" x 18" deformed bar with a yellow plastic cap stamped "RLS 1253" to be set at all lot boundary corners, prior to recordation, unless noted otherwise.
- A 3/8" x 18" deformed bar with a yellow plastic cap stamped "RLS 1253" to be set at all lot corners after completion of improvements, unless noted otherwise.
- A 3/8" x 18" deformed bar with a yellow plastic cap stamped "RLS 1253" to be set at all street centerline intersections, points of curve, points of tangent, points of compound curve, points of reverse curve, center of cul-de-sacs and center of eyebrows, after completion of improvements, unless noted otherwise.

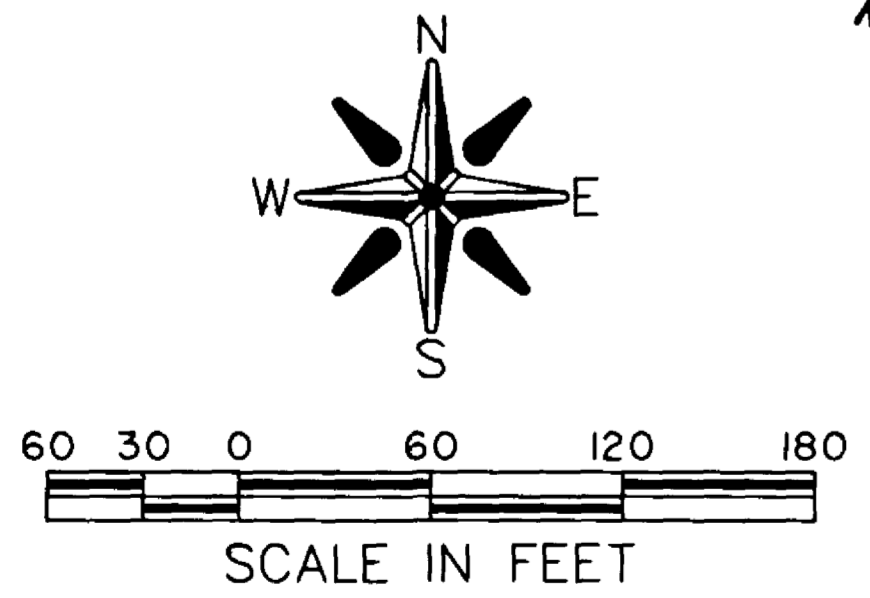
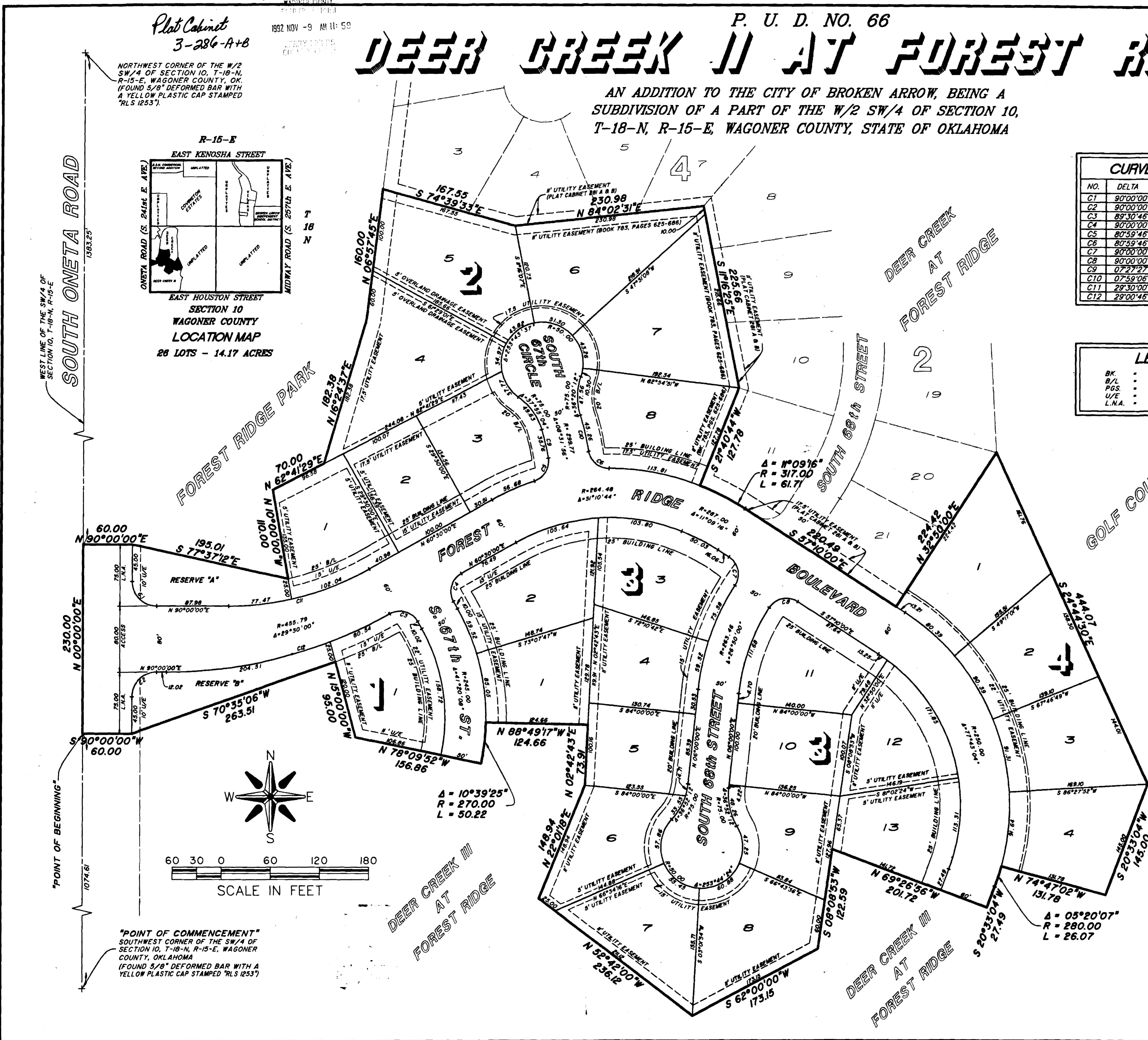
BENCHMARK:
Top of brass cap set on top of curb approximately 8 feet east of handicap access ramp at the south end of South 68th Street sui-de-loc.
Elevation = 640.69 (N.G.V.D.)

APPROVED 10-5-94 by the City Council of the City of Broken Arrow, Oklahoma.
James C. Reynolds, Mayor
Suzanne R. Ruffalo, At-Large City Clerk

DEER CREEK II AT FOREST RIDGE

SHEET 1 OF 2

91-RDCO-0005-0060



"POINT OF COMMENCEMENT"
SOUTHWEST CORNER OF THE SW/4 OF
SECTION 10, T-18-N, R-15-E, WAGONER
COUNTY, OKLAHOMA
(FOUND 5/8" DEFORMED BAR WITH A
YELLOW PLASTIC CAP STAMPED "RLS 1253")