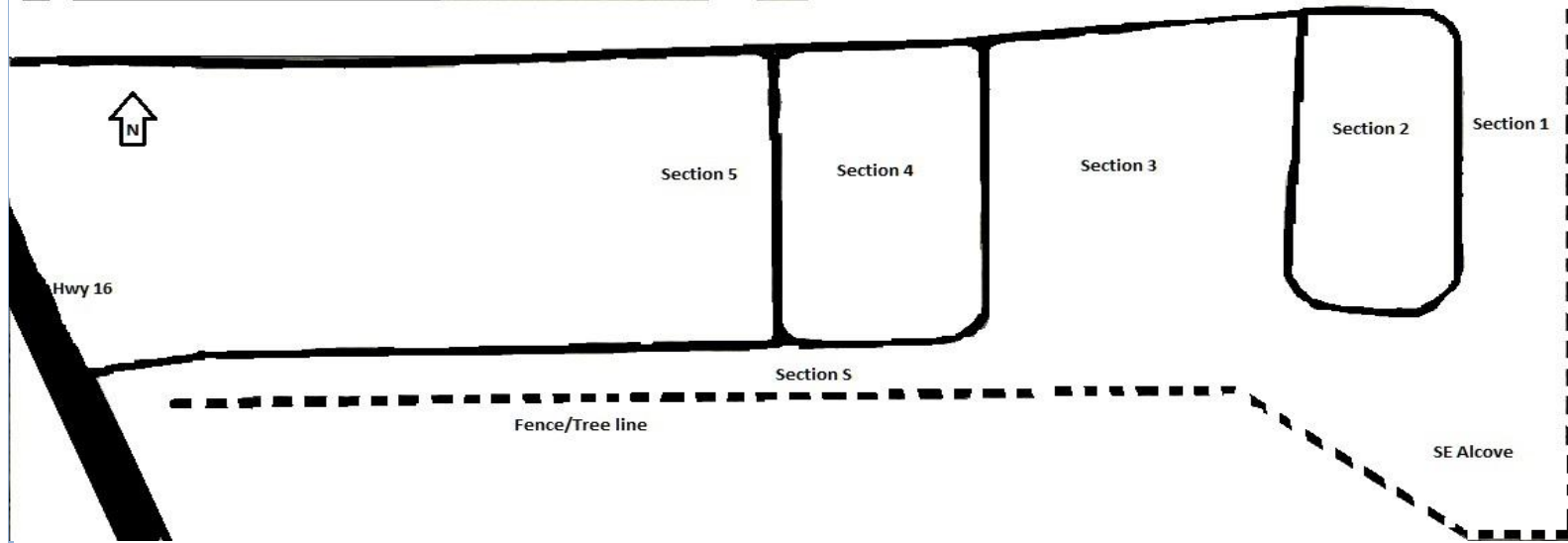


**Directions:** State Highway 16 and 88th St Station ( About 8 miles south of Wagoner)

**History:** Last survey done January 2017 by Sally Boyne. Surveyed beginning in SE corner of each section.

**Status:** Well maintained, active cemetery.



Last Name	First Name	Middle	Date of Birth	Date of Death	Marriage Date	Sec	Blk/Row	Lot	Campaign	Branch	Inscription Material; Type of Mrkr; Dimensions ;Faces; Carving; Condition-soiled, stained, delaminating, graffiti, biological, erosion, exfoliation, cracked, tilted/sunken, open joints, fragmented, losses
Abernathy	A.		1/11/1883	5/25/1955		2	1	5			Homemade concrete headstone 2"t x 16"w x 8"d; faces w; mostly readable soiled, biological, erosion, losses
Abernathy	Adline		4/1/1870	10/1/1930		1	4	6			Illegible verse Marble pedestal obelisk 36"t x 8"w x 8"d; Base1 6"t x 12"w x 12"w; Base2 2"t x 18"w x 18"d faces w; clear but worn; biological

Evergreen Cemetery  
S13, R18E, T16N, Gibson Station Township

Last Name	First Name	Middle	Date of Birth	Date of Death	Marriage Date	Sec	Blk/Row	Lot	Campaign	Branch	Inscription Material; Type of Mrkr; Dimensions ;Faces; Carving; Condition-soiled, stained, delaminating, graffiti, biological, erosion, exfoliation, cracked, tilted/sunken, open joints, fragmented, losses
Abernathy	Bertha	M.	11/8/1925	10/27/2010	12/24/1943	4	8	2			Shares headstone with W. Howard Abernathy; rose; vase in center Grey granite headstone 15"t x 16"w x 6"d; base 4"t x 54"w x 13"d; faces W; mint carving tilted/sunken
Abernathy	Cicero		4/6/1903	3/10/1974		1	3	11			The way of the cross leads home; Cross emblem Concrete headstone 24"t x 24"w x 12"d; base 12"t x 30"w x 18"d; faces w; mint carving biological
Abernathy	Darrel		1956	2010		1	4	7			Biglow funeral home marker; Not found during 2017 survey
Abernathy	Darrell	L	4/1/1956	7/18/2010		1	4	4			Loving Father and Brother; Music staff; praying hands grey granite headstone 24"t x 12"w x 12"d; mint carving
Abernathy	Ellen	Rider	2/21/1901	10/11/1965		1	3	12			Photo grey granite headstone 18"t x 24"w x 8"d; base 6"t x 36"w x 12"d; faces w; mint carving
Abernathy	Ethel		4/1/1894	4/14/1964		3	4	18			Shares headstone with William F. Abernathy; vase in center Grey granite headstone 16"t x 51"w x 6"d; base 5"t x 66"w x 12"d; faces W; mint carving
Abernathy	Lee	Roy	9/28/1888	10/11/1974	4/3/1915	1	3	9			Shares headstone with Minnie Abernathy; vase with A in center of stone grey granite headstone 24"t x 48"w x 6"d; base 60"w x 12"d; faces w; mint carving
Abernathy	Margaret	L. Jones	4/21/1912			1	3	13			Photo grey granite headstone 18"t x 24"w x 6"d; base 30"w x 10"d; faces w; mint carving tilted/sunken
Abernathy	Marshall	L.	10/22/1922	8/3/1983		1	3	10	WWII	Army	PFC ; cross Marble military headstone 30"t x 12"w x 4"d; faces w; mint carving biological
Abernathy	Marshall		5/1/1867	4/3/1943		1	4	5			Grey granite headstone 12"t x 24"w x 8"d; faces w; mint carving biological, stained
Abernathy	Marvin		1/30/1922	4/16/1959		4	2	2	WWII	Navy	Oklahoma S1 USNR White marble military headstone 21"t x 13"w x 4"d; faces W; mint carving biological

Evergreen Cemetery  
S13, R18E, T16N, Gibson Station Township

Last Name	First Name	Middle	Date of Birth	Date of Death	Marriage Date	Sec	Blk/Row	Lot	Campaign	Branch	Inscription Material; Type of Mrkr; Dimensions ;Faces; Carving; Condition-soiled, stained, delaminating, graffiti, biological, erosion, exfoliation, cracked, tilted/sunken, open joints, fragmented, losses
Abernathy	Minnie		8/18/1892	12/16/1974	4/3/1915	1	3	8			Shares headstone with Lee Roy Abernathy; vase with A in center of stone grey granite headstone 24"t x 48" x 6"d; base 60"w x 12"d; faces w; mint carving
Abernathy	Selma	Mosley	1/11/1919	3/31/2011		4	3	3			In loving memory of; cross; photo; roses Grey granite headstone 19"t x 24"w x 7"d; base 7"t x 33"w x 13"d; faces W; mint carving
Abernathy	Tom		2/20/1889	6/4/1967		3	4	15			Shares headstone with Willie Abernathy Grey granite headstone 5"t x 49"w x 12"d; faces E; mint carving stained
Abernathy	W.	Howard	10/1/1917	9/19/1996	12/24/1943	4	8	1			Shares headstone with Bertha M. Abernathy; rose; vase in center Grey granite headstone 15"t x 16"w x 6"d; base 4"t x 54"w x 13"d; faces W; mint carving tilted/sunken
Abernathy	William	F.	4/1/1878	10/1/1939		3	4	19			Shares headstone with Ethel Abernathy; vase in center Grey granite headstone 16"t x 51"w x 6"d; base 5"t x 66"w x 12"d; faces W; mint carving
Abernathy	Willie		10/22/1900	8/17/1993		3	4	14			Shares headstone with Tom Abernathy Grey granite headstone 5"t x 49"w x 12"d; faces E; mint carving stained
Alexander	Ira	Lee	10/16/1902	11/17/1971		3	2	6			Double stone - other side blank; vases Grey granite headstone 7"t x 37"w x 12"d; faces W; mint carving
Alexander	James		3/1/1873	4/9/1929		3	1	19			Grey granite headstone 17"t x 24"w x 6"d;Base 3"t x 32"w x 12"d; faces W; mint carving
Alexander	Parthaney		1871	1943		3	1	18			Grey granite headstone 13"t x 24"w x 11"d; Faces W; mint carving
Alexander						3	2	5			Shares stone with Ira Lee Alexander; Vases Grey granite headstone 7"t x 37"w x 12"d; mint carving
Andy	C.	L.	6/17/1886	8/11/1974		3	8	20			Shares stone with Ivy H Andy Grey granite headstone 7"t x 48"w x 14"d; faces W; mint carving

Evergreen Cemetery  
S13, R18E, T16N, Gibson Station Township

Last Name	First Name	Middle	Date of Birth	Date of Death	Marriage Date	Sec	Blk/Row	Lot	Campaign	Branch	Inscription Material; Type of Mrkr; Dimensions ;Faces; Carving; Condition-soiled, stained, delaminating, graffiti, biological, erosion, exfoliation, cracked, tilted/sunken, open joints, fragmented, losses
Andy	Ethel	Lee	3/27/1926	3/26/1986		3	9	11			Shares headstone with Rev. C.L. Grey granite headstone 10"t x 25"w x 4"d; faces W; mint carving
Andy	Eugene	E., Sr.	8/21/1941	12/22/2003		3	8	18			Father and Son; In loving memory; "That's Gene"; Shares stone with Robert Andy Grey granite headstone 4"t x 20w x 10d; base 3"t x 28"w x 18"d; faces W; mint carving
Andy	Ivy	H.	4/21/1889	12/20/1975		3	8	21			Shares stone with C L Andy Grey granite headstone 7"t x 48"w x 14"d; faces W; mint carving
Andy	Louie		12/7/1921	5/4/1985		3	8	17	WWII	Army	PFC; cross; two headstone on one grave Metal military headstone 5"t x 24"w x 16"d; faces w; mint carving
Andy	Major	William III	7/31/1990	10/10/1990		3	8	17			Our Baby; Two headstones on one grave Grey granite headstone 4"t x 21"w x 10"d; Base 4"t x 24"w x 20"d; faces W; mint carving tilted/sunken
Andy	Parthenia	M. (Pat)	11/14/1923			3	7	7			In loving memory; Photo; Shares headstone with William Andy, Sr.; praying hands Grey granite headstone 19"t x 37"w x 7"d; base 7"t x 49"w x 12"d; faces W; mint carving
Andy	Rev. C.	L.	9/18/1926	3/24/1984		3	9	12			Shares headstone with Ethel Lee Grey granite headstone 10"t x 25"w x 4"d; faces W; mint carving
Andy	Robert		3/1918	12/1963		3	8	19			Father and Son; "Old Bob"; Shares stone with Eugene E. Andy, Sr.; In loving memory Grey granite headstone 4"t x 20"w x 10"d; base 3"t x 28"w x 18"d; faces W; mint carving
Andy	William	Sr.	5/13/1924	11/22/2010		3	7	8			In loving memory; Photo; Shares headstone with Parthenia M. Andy; praying hands Grey granite headstone 19"t x 37"w x 7" d ; base 7"t x 49"w x 12"d; faces W; mint carving
Ashley	Clara		1881	1965		2	5	6			cross Concrete headstone 24"t x 15"w x 2"d; mostly readable; soiled, stained, biological, erosion, losses
Ashley	Claudia	"Bea"	2/24/1939	5/17/2003		5	8	7			Devoted wife, mother, and grandmother; vase; verse on back Rose granite headstone 19"t x 25"w x 6"d; base 7"t x 41"w x 13"d; faces W; Mint craving

Evergreen Cemetery  
S13, R18E, T16N, Gibson Station Township

Last Name	First Name	Middle	Date of Birth	Date of Death	Marriage Date	Sec	Blk/Row	Lot	Campaign	Branch	Inscription Material; Type of Mrkr; Dimensions ;Faces; Carving; Condition-soiled, stained, delaminating, graffiti, biological, erosion, exfoliation, cracked, tilted/sunken, open joints, fragmented, losses
Ashley	Louie		3/30/1918	2/5/1993		5	8	8		Army	Cross Metal military headstone 1"t x 24"w x 12"d; faces W; mint carving
Ashley	Naomi		4/5/1922	12/28/2011		5	8	9			Biglow funeral home marker; illegible
Ashley	Sheila	F.	9/21/1951	3/20/2013		5	10	22			Grey granite headstone 12"t x 21"w x 10"d; faces W; mint carving tilted/sunken
Ashley	William	C.	1943	1991		2	6	8		Army	Cross White marble military headstone 27"t x 13"w x 4"d; faces W; clear but worn biological
Ballard	B.		4/23/1905	1940		3	2	2			damaged cement stone Marble headstone 2"t x 13"w x 8"d; faces E; traces of carving fragmented, losses
Ballard	Virgil	Chink	1892	1969		4	6	17	WWI		Oklahoma PVT SUP CO 805 Pioneer INF; cross Grey granite military headstone 3"t x 24"w x 12"d; faces W; mint carving biological; stained; losses
Barnett	Wainetta	Bolton	1925	2010		5	4	11			Biglow Funderal Home Marker
Beavers	Helen	E.	6/21/1928	9/22/1963		3	10	5			My beloved wife Grey granite headstone 12"t x 19"w x 7"d; faces W; mint carving
Bell	Richard	E.	7/19/1933	11/7/1992		5	4	17		Army	Cross Grey granite military headstone 4"t x 24"w x 12"d; faces W; mint carving tilted/sunken; soiled
Bell	Robert	G., Jr.	4/3/1990	2/22/2010		5	3	2			Concrete slab; We love you; dove; angel Grey granite headstone 5"t x 21"w x 11"d; faces W; mint carving
Bell	Ruth	Mae Lurks	6/19/1951	7/16/2007		2	1	12			We love you; Praying hands grey granite headstone 24"w x 12"d; faces w; mint carving soiled

Evergreen Cemetery  
S13, R18E, T16N, Gibson Station Township

Last Name	First Name	Middle	Date of Birth	Date of Death	Marriage Date	Sec	Blk/Row	Lot	Campaign	Branch	Inscription Material; Type of Mrkr; Dimensions ;Faces; Carving; Condition-soiled, stained, delaminating, graffiti, biological, erosion, exfoliation, cracked, tilted/sunken, open joints, fragmented, losses
Benson	Alex		1869	1936		2	1	3			Shares headstone with Willie Benson Grey granite headstone 2"t x 4"w x 12"d faces E; mint carving Biological, stained
Benson	Bobbye	G. Sr.	10/6/1934	5/26/2013		5	2	2			b. Gibson Station; d. Glendale, AZ; Shipman Funeral Hom Marker
Benson	Dallas		1924	1984		3	9	6			Homemade concrete headstone 2"t x 25"w x 15"d; faces W; mint carving biological
Benson	Dallas		1899	1973		3	10	6			Roses Rose granite headstone 3"t x 25"w x 13"d; faces W; mint carving
Benson	Eddie	V. Sr	7/22/1944	7/3/1994		5	1	7			Trooper #394; Gone fishing; Blessed are the pure in heart Matt 5:8 Grey granite headstone 15"t x 24"w x 11"d; base 5"t x 32"w x 16"d; faces W; mint carving
Benson	Erc	Ell	1906	1978		3	10	7			Roses Grey granite headstone 5"t x 24"w x 12"d; faces W; mint carving biological
Benson	Mark	E., Sr.	2/10/1958	9/10/2005		5	1	10			In my Father's house are many mansions; Photo; Poem on back; vase; crosses Black granite headstone 19"t x 25"w x 6"d; base 7"t x 36"w x 13"d; faces W; mint carving
Benson	Ruth	(Robbins)	12/16/1936	1/19/2015		5	1	8			Crosses; In God's care; Shares stone with Willie Lee Benson granite headstone 6"t x 49"w x 15"d; faces W; mint carving
Benson	Thomas		11/6/1824	buried		SE Alcove	1	9			Stone at foot of Thomas Benson. Possible grave but could be foot stone. Homemade concrete headstone 14"t x 10"w x 4"d; footstone 9"t x 10"w x 4"d; faces E; mostly readable, partially underground, biological, tilted/sunken
Benson	Willie	I., Jr.	7/28/1956	7/1/1976		3	9	5			Rose granite headstone 7"t x 24"w x 12"d; base 34"w x 18"d; faces W; mint carving tilted/sunken
Benson	Willie	Lee	12/18/1930	9/15/2003		5	1	9	Korea; Vietnam	Army; Air Force	Crosses; In God's care; Shares stone with Ruth (Robbins) Benson Rose granite headstone 6"t x 49"w x 15"d; faces W; mint carving; Metal military foot stone 1"t x 24"w x 12"d faces E; stained

Evergreen Cemetery  
S13, R18E, T16N, Gibson Station Township

Last Name	First Name	Middle	Date of Birth	Date of Death	Marriage Date	Sec	Blk/Row	Lot	Campaign	Branch	Inscription Material; Type of Mrkr; Dimensions ;Faces; Carving; Condition-soiled, stained, delaminating, graffiti, biological, erosion, exfoliation, cracked, tilted/sunken, open joints, fragmented, losses
Benson	Willie		1880	1928		2	1	2			Shares headstone with Alex Benson Grey granite headstone 2"t x 4"w x 12"d faces E; mint carving Biological, stained
Blandon	Jamesetta		2/1/1967	4/11/2009		4	8	3			Loving daughter and sister; Photo Grey granite headstone in shape of heart 25"t x 24"w x 7"d; base 7"t x 37"w x 13"d; faces W; mint carving
Bolton	Cecil	"Pops"	3/16/1935	11/16/1984		5	3	5			Rose granite headstone 6"t x 25"w x 13"d; faces W; mint carving
Bolton	Flora		1871	7/25/1943		2	7	1			Cement blocks completely around grave Concrete headstone 24"t x 18"w x 5"d; faces W; clear but worn Soiled and stained
Bolton	Grace	Sylvia	9/20/1903	10/13/1995		4	6	13			Praying hands; rose Rose granite headstone 9"t x 25"w x 13"d; faces w; mint carving
Bolton	Oscar	E., Sr.	12/31/1926	10/8/1991		5	3	7	WWII	Army	PFC Metal military headstone 1"t x 24"w x 12"d; faces W; mint carving tilted/sunken
Bolton	Otto	Jr.	6/6/1928	9/4/1985		5	3	6		Army	Metal military headstone 1"t x 24"w x 12"d; faces W; mint carving soiled; tilted/sunken
Bolton	Otto	Sr.	5/19/1901	8/20/1972		4	6	15			In memory of; Father; rose Rose granite headstone 6"t x 24"w x 13"d; Faces W; mint carving
Bolton	Ray		4/30/1903	9/24/1978		4	6	16			In loving memory; Father; vase Metal plaque on grey marble headstone 6"t x 25"w x 13"d; base 3"t x 36"w x 16"d; faces W; mint carving; tilted/sunken
Bolton	Robert	Lewis	2/16/1942	12/2/2005		5	6	1			Loving husband dad & papa; We love you; photo Black granite headstone 30"t x 24"w x 6"d; base 7"t x 42"w x 12"d; faces W; mint carving
Bookout	Melvin		1922	1974		5	7	7		Army	SGT; Not found during 2013 or 2017 survey

Evergreen Cemetery  
S13, R18E, T16N, Gibson Station Township

Last Name	First Name	Middle	Date of Birth	Date of Death	Marriage Date	Sec	Blk/Row	Lot	Campaign	Branch	Inscription Material; Type of Mrkr; Dimensions ;Faces; Carving; Condition-soiled, stained, delaminating, graffiti, biological, erosion, exfoliation, cracked, tilted/sunken, open joints, fragmented, losses
Booth	John		3/4/1914	3/20/1971		5	8	14	WWII		Arkansas TEC5 2830 ENGR CMBT BN; Not found during 2013 or 2017 survey
Bowden	Johnnie	Mae	4/12/1912	9/14/2012		5	5	1			Mother & Grandmother Grey granite headstone 5"t x 24"w x 12"d; faces W; mint carving tilted/sunken
Bowden	Samuel		1919	1985		5	4	16	WWII	Army	CPL; cross Metal military headstone 1"t x 24"w x 12"d; faces W; mint carving Biological, tilted/sunken; soiled
Brewer	Lucille	Ann	6/22/1932	10/3/2009		2	4	3			Photo; In loving memory; Crosses Grey granite headstone 12"t x 21"w x 9"d;Base 6"t x 25"w x 12"d; faces 2; mint carving
Broadnax	Vanessa	"chelle"	4/17/1963	3/11/2002		5	4	18			Vase Grey granite headstone 5"t x 25"w x 12"d; faces W; mint carving
Brooks	Climmie		6/24/1887	4/18/1911		SE Alcove	2	1			In my Father's house are many mansions Concrete pedestal obelisk 36"t x 8"w x 8"d; base1 6"t x 12"w x 12"d; base 2 6"t x 18"w x 18"d; faces E; clear but worn; biological, stained
Brown	Dorothy		1924	4/6/2001		5	4	9			Age 77; Jacks Memory Chapel temporary marker; illegible losses
Brown	Jessie	Cooper	1891	1961		3	9	9			Grey granite headstone 6"t x 25"w x 13"d; faces W; mint carving tilted/sunken
Brown	Lee	Ervin	1/4/1927	2/8/1991		5	4	8			In loving memory Grey granite headstone 3"t x 20"w x 10"d; faces W; mint carving tilted/sunken
Brown	Richard	L.	1921	1968		3	5	5			Cross Grey granite headstone 15"t x 25"w x 10"d; base 32"w x 16"d; faces W; mint carving stained; tilted/sunken
Bruner	Natasha	Lashell	10/16/1970	2/2/1971		4	1	7			Angel Grey granite headstone 12"t x 14"w x 4"d; faces W; mint carving tilted/sunken



Evergreen Cemetery  
S13, R18E, T16N, Gibson Station Township

Last Name	First Name	Middle	Date of Birth	Date of Death	Marriage Date	Sec	Blk/Row	Lot	Campaign	Branch	Inscription Material; Type of Mrkr; Dimensions ;Faces; Carving; Condition-soiled, stained, delaminating, graffiti, biological, erosion, exfoliation, cracked, tilted/sunken, open joints, fragmented, losses
Burkhalter	Dan		8/17/1902	8/14/1968		4	8	12			Shares stone with Odessia V Burkhalter; vase in center Grey granite headstone 16"t x 23"w x 6"d; base 3"t x 66"w x 13"d; faces W; mint carving
Burkhalter	Madison		8/15/1860	1/14/1963		3	6	15			Grey granite headstone 16"t x 14"w x 5"d; faces W; mint carving tilted/sunken
Burkhalter	Mrs. Mattie		2/15/1864	8/3/1946		3	6	14			At rest Grey marble headstone 18"t x 14"w x 4"d; base 4"t x 18"w x 8"d; faces W; mint carving biological
Burkhalter	Odessia	V.	9/19/1906	1/19/1997		4	8	11			Shares stone with Dan Burkhalter; vase in center Grey granite headstone 16"t x 23"w x 6"d; base 3"t x 66"w x 13"d; faces W; mint carving
Burkhalter	Rev. Elmore	E.	7/7/1898	10/25/1991		4	7	3			Grey granie headstone 15"t x 21"w x 9"d; base 5"t x 25"w x 13"d; faces W; mint carving biological
Burkhalter	Vernard		12/22/1928	4/4/1955		3	6	17			Grey granite headstone 4"t x 25"w x 12"d; faces W; mint carving losses
Burkhalter	Warnett	A.	12/4/1933	2/5/1967		3	6	16			Grey granite headstone 13"t x 24"w x 10"d; faces W; mint carving
Cade	Johnnie	Cornelius	3/20/1875	8/21/1962		4	6	9			Father; broken concrete slab Rose granite headstone 7"t x 25"w x 13"d; faces W; mint carving biological; tilted/sunken
Cade	Lester		4/2/1906	2/3/1988		4	5	7			Headstone shared with Mildred Cade; vase with C in center Grey granite headstone 7"t x 17"w x 8"d; base 6"t x 54"w x 12"d; faces W; mint carving
Cade	Mary	Ann	9/13/1885	7/19/1969		4	6	8			Mother; concrete slab Rose Granite headstone 7"t x 25"w x 13"d; faces W; mint carving biological
Cade	Mildred		12/31/1908	10/4/1992		4	5	8			Headstone shared with Lester Cadee; vase with C in center Grey granite headstone 7"t x 17"w x 8"d; base 6"t x 54"w x 12"d; faces W; mint carving

Evergreen Cemetery  
S13, R18E, T16N, Gibson Station Township

Last Name	First Name	Middle	Date of Birth	Date of Death	Marriage Date	Sec	Blk/Row	Lot	Campaign	Branch	Inscription Material; Type of Mrkr; Dimensions ;Faces; Carving; Condition-soiled, stained, delaminating, graffiti, biological, erosion, exfoliation, cracked, tilted/sunken, open joints, fragmented, losses
Cade	R.	C.				SE Alcove	1	1			Not found in 2017 survey
Camp	Marie	Hopkins	8/9/1915	11/19/1973		3	5	9			Rose granite headstone 8"t x 21"w x 4"d; faces W; mint carving biological; tilted/sunken; partial concrete slab
Camper	Elese		10/2/1915	9/7/1991		4	5	15			Mother; In loving memory; crosses Grey granite headstone 21"t x 19"w x 6"d; base 7"t x 25"w x 13"d; faces W; mint carving
Cannon	Allie	D. Stanton	1899	1928		3	1	22			Concrete headstone 4"t x 14"w x 14"d; faces W; mint carving tilted/sunken
Cater	Anna		4/26/1906	10/21/1977		4	3	1			Rose granite headstone 22"t x 17"w x 6"d; faces W; mint carving tilted/sunken
Chatman	Dorothy		1/31/1934	12/29/1997		5	4	2			Our loved one; rose Grey granite headstone 6"t x 21"w x 11"d; faces W; mint carving
Chatman	Georgia	Lee	5/10/1945	11/19/2010		5	8	3			Always remembered; Loving mother and grandmother of Phyllis, Angela, Taizja, Torri; praying hands; cross; vase; Rose granite headstone 19"t x 24"w x 6"d; base 6"t x 41"w x 13"d; faces W; mint carving
Christian	Teresa		2/15/1953	9/19/2016		3	10	12			Age 63; Dyer memorial chapel funeral home marker
Coleman	Pearlie		1/1/1903	7/3/1983		3	5	4			Rose Grey granite headstone 5"t x 18"w x 9"d; faces W; mint carving
Cooper	Jessie	W.	7/10/1860	9/29/1952		3	10	9			Shares headstone with Mollie D. Cooper Rose granite headstone 23"t x 27"w x 6"d; faces W; mint carving tilted/sunken
Cooper	John		5/22/1910	3/10/1986		3	10	11			In memory of Grey granite headstone 15"t x 20"w x 8"d; base 5"t x 24"w x 12"d; faces W; mint carving tilted/sunken

Evergreen Cemetery  
S13, R18E, T16N, Gibson Station Township

Last Name	First Name	Middle	Date of Birth	Date of Death	Marriage Date	Sec	Blk/Row	Lot	Campaign	Branch	Inscription Material; Type of Mrkr; Dimensions ;Faces; Carving; Condition-soiled, stained, delaminating, graffiti, biological, erosion, exfoliation, cracked, tilted/sunken, open joints, fragmented, losses
Cooper	Mollie	D.	12/31/1871	2/12/1952		3	10	10			Shares headstone with Jessie W. Cooper Rose granite headstone 23"t x 27"w x 6"d; faces W; mint carving tilted/sunken
Cotton	Clifton		10/22/1908	4/9/1944		3	5	1			California PVT Serv. Comd. Unit 1930; cross White marble military headstone 17"t x 13"w x 4"d; faces w; clear but worn stained; biological; erosion; exfoliation
Cowan	Hannah		10/1852	6/26/1943		2	3	13			Grandmother; In loving memory; Crosses; Vase Grey granite headstone 20"t x 19"w x 6"d; Base 6"t x 30"w x 13"d; faces w; mint carving
Crain	Lura		7/12/1905	4/7/1964		4	4	2			Rose marble headstone 14"t x 18"w x 9"d; faces W; mint carving tilted/sunken
Crawford	Laura		1938	11/6/1997		4	5	13			59 years; Jacks Memory Chapel; Metal marker with rebar cross
Crittelle	Lottie		1871	1945		1	1	1			Grey granite headstone 2"t x 18"w x 8"d; faces w; mint carving losses
Dameron	Willa	Mae	8/26/1906	5/12/1979		S	2	1			Grey granite headstone 6"t x 24"w x 12"d; base 2"t x 36"w x 24"d; faces E; clear but worn carving; soiled; stained; biological
Deere	George	Jr.	12/22/1911	3/21/1998		3	9	7			Age 86; Ragsdale Funeral Center, Muskogee, OK; Concrete marker with deer; concrete marker with poem
Donaldson	Brian	Keith	1967	2015		5	10	19			Biglow funeral home marker
Donaldson	Wanda	Marie	7/29/1941	6/8/2012		5	10	20			In loving memory; vase Grey granite headstone 21"t x 19"w x 6"d; base 7"t x 32"w x 13"d; faces W; mint carving
Dunevant	Arminter		1873	1961		2	3	2			Shares headstone with Congress Dunevant Limestone headstone 4"t x 30"w x 10"d; faces w; mint carving soiled, stained, biological, tilted/sunken

Evergreen Cemetery  
S13, R18E, T16N, Gibson Station Township

Last Name	First Name	Middle	Date of Birth	Date of Death	Marriage Date	Sec	Blk/Row	Lot	Campaign	Branch	Inscription Material; Type of Mrkr; Dimensions ;Faces; Carving; Condition-soiled, stained, delaminating, graffiti, biological, erosion, exfoliation, cracked, tilted/sunken, open joints, fragmented, losses
Dunevant	Ben		4/16/1870	6/10/1945		3	6	5			Not dead Just away; In memory of White marble headstone 24"t x 12"w x 6"d; base1 7"t x 16"w x 10"d; base2 8"t x 23"w x 17"d; faces W; clear but worn carving; biological; erosion
Dunevant	Congress	V.	11/25/1933	2/22/2004		4	6	3			Always in our hearts; In loving memory of our brother; rose grey granite headstone 15"t x 25"w x 10"d; base 36"w x 24"d; faces W; mint carving
Dunevant	Congress		1870	1925		2	3	1			Shares headstone with Arminter Dunevant Limestone headstone 4"t x 30"w x 10"d; faces w; mint carving soiled, stained, biological, tilted/sunken
Dunevant	Ella	B.	6/24/1880	12/31/1968		3	6	4			At rest Grey granite headstone 15"t x 21"w x 8"d; faces W; mint carving tilted/sunken
Dunevant	Enid		1/25/1906	4/11/1988		4	5	3			In loving memory; Mother; Headstone shared with Thomas Dunevant; praying hands Grey granite headstone 20"t x 36"w x 6"d; base 6"t x 48"w x 12"d; faces W; mint carving
Dunevant	Theodore	Sr.	2/28/1913	2/26/1995		4	4	1			Crosses Grey granite headstone 21"t x 19"w x 6"d; base 6"t x 28"w x 13"d; faces W; mint carving
Dunevant	Thomas		2/8/1896	8/4/1967		4	5	2			In loving memory; Father; Footstone has Thomas Dunevant, Sr. & dates; Headstone shared with Enid Dunevant; praying hands; grey granite headstone 20"t x 36"w x 6"d; base 6"t x 48"w x 12"d; Metal foot stone 21"w x 10"d; faces W; mint carving
Durley	Alban		5/21/1893	2/17/1968		4	4	5	WWI		Oklahoma PVT 68 CO 163 Depot BRIG; cross White marble military headstone 1"t x 24"w x 12"d; Base 3"t x 36"w x 24"d; faces W; clear but worn carving; stained; losses
Durley	B.	H., Jr.	1890	1917		2	3	4			concrete headstone 3"t x 16"w x 11"d; concrete slab; faces w; mostly readable biological, tilted sunken
Durley	Buck		7/11/1858	5/1924		2	3	5			Peace perfect peace; masonic emblem; Bible Concrete headstone 36"t x 24"w x 8"d; Base 36"w x 15"d; Concrete slab; faces E; clear but worn; stained, biological, cracked
Durley	Chester	Simpson	5/12/1915	9/24/1987		4	4	4	WWII	Army	SGT; cross White marble military headstone 5"t x 24"w x 12"d; faces W; mint carving stained

Evergreen Cemetery  
S13, R18E, T16N, Gibson Station Township

Last Name	First Name	Middle	Date of Birth	Date of Death	Marriage Date	Sec	Blk/Row	Lot	Campaign	Branch	Inscription Material; Type of Mrkr; Dimensions ;Faces; Carving; Condition-soiled, stained, delaminating, graffiti, biological, erosion, exfoliation, cracked, tilted/sunken, open joints, fragmented, losses
Durley	E.	V.	1923	1924		2	4	15			Homemade concrete headstone 4"t x 16"w x 11"d;concrete slab; faces w; mostly readable; stained, biological, tilted/sunken
Durley	Frankie		1900	1981	1919	2	4	16			Shares headstone with Leo G. Durley Grey granite headstone 4"t x 48"w x 14"d; faces E; mint carving; stained
Durley	Leo	G.	1900	1987	1919	2	4	17			Shares headstone with Frankie Durley Grey granite headstone 4"t x 48"w x 14"d; faces E; mint carving stained
Durley	Lorayne		1931	1950		3	8	16			Roses Rose granite headstone 7"t x 25"w x 13"d; base 36"w x 24"d; faces W; mint carving
Durley	Thirkield	Moon	8/5/1916	9/7/2006		4	4	3			Rose marble headstone 4"t x 24"w x 12"d; faces W; mint carving
Durley	Verona		5/18/1896	10/22/1966		4	4	6			Mother Grey granite headstone 15"t x 20"w x 9"d; faces W; mint carving
E F						5	6	3			Metal temporary marker; cement in ground with E.F. on it Concrete Headstone 13"w x 6"d; faces W; clear but worn carving
EDD			1882	1947		1	4	10			At rest Marble pedestal obelisk 36"t x 8"w x 8"d; base 4"t x 12"w x 12"d; faces w; mostly readable biological
Edwards	Leo	C.	6/19/1915	1/9/1986		5	4	15			Grey granite headstone 5"t x 17"w x 9"d; faces W; mint carving
Elmore	Latteria	Patrice "Tricee"	11/20/1972	4/11/1996		3	10	13			Beloved Daughter of Barbara Andy; In loving memory; Photo; Car, teddy bear, roses carved in headstone; Poem on back; Vases; Black granite headstone in shape of heart 25"t x 28"w x 6"d; base 7"t x 48"w x 12"d; faces W; mint carving
Eonville	Tenie		1859	1936		2	5	3			Broken stone Limestone headstone 2"t x 14"x 17"d; faces w; mostly readable; soiled, stained, losses

Evergreen Cemetery  
S13, R18E, T16N, Gibson Station Township

Last Name	First Name	Middle	Date of Birth	Date of Death	Marriage Date	Sec	Blk/Row	Lot	Campaign	Branch	Inscription Material; Type of Mrkr; Dimensions ;Faces; Carving; Condition-soiled, stained, delaminating, graffiti, biological, erosion, exfoliation, cracked, tilted/sunken, open joints, fragmented, losses
Erby	Alvin		2/3/1915			4	7	2			Married 44 years; Shares stone with Pauline Erby Grey granite headstone 15"t x 37"w x 11"d; faces W; mint carving biological
Erby	Pauline		10/11/1911	4/15/1996		4	7	1			Married 44 years; Shares stone with Alvin Erby Grey granite headstone 15"t x 37"w x 11"d; faces W; mint carving biological
Evitt	Kevin	Eugene	2/26/1970	2/8/2011		3	5	6			Love Parris, Kerria, Kyle, Kee, Kevon, YeYe, RaRa; The Lord is my shepherd Ps 23 Combination concrete/fieldstone 30"t x 22"w x 2"d; faces W; mint carving
Finley	Arminster	Dunevant	10/26/1910	11/2/1983		2	4	10			Love ya mom & dad; Cross Grey granite headstone 21"t x 18"w x 6"d; Base 6"t x 24"w x 13"d; faces w; mint carving
Finley	Claude	Sr.	12/22/1905	9/13/1966		2	4	9			Husband Grey granite headstone 20"t x 18"w x 6"d; Base 6"t x 24"w x 12"d; faces W; mint carving
Flemons	Carrie	Jean Brown	10/4/1926	1/11/1994		3	5	3			Beloved mother; In loving memory; vase Grey granite headstone 19"t x 25"w x 6"d; base 4"t x 40"w x 12"d; faces W; mint carving soiled; stained
Fonville	Carrie	M.	3/24/1890	4/5/1964		4	2	3			Grey granite headstone 20"t x 17"w x 6"d; base 2"t x 25"w x 12"d; faces W; mint carving soiled
Fonville	Eddie		12/28/1894	10/12/1918		2	6	4			Co 26 163 Inf USA; Crossed rifles Concrete headstone 27"t x 14"w x 2"d; faces w; clear but worn; Stained, biological, erosion, tilted/sunken
Fonville	J.	A.	1854	1917		2	6	3			I have fought a good fight, I have finished my course, I have kept the faith; Δ inverted with letters B U F around it and SGT below it.;Concrete headst 38"t x 19"w x 3"d; Base 3"t x 24"w x 12"d;faces w;clear but worn; biological, erosion
Gambill	John	Allen	3/17/1862	2/3/1903		SE Alcove	2	2			Grey granite headstone 4"t x 24"w x 12"d; faces w; mint carving tilted/sunken, losses
Garrett	Willie	M.	9/16/1897	10/2/1918		1	3	6			Weep not he is not dead but sleepeth; He giveth his beloved sleep; Bible Concrete headstone 24"t x 24"w x 8"d; Base1 12"t x 30"w x 12"d; Base2 12"t x 36"w x18"d; faces w; clear but worn; biological, erosion

Evergreen Cemetery  
S13, R18E, T16N, Gibson Station Township

Last Name	First Name	Middle	Date of Birth	Date of Death	Marriage Date	Sec	Blk/Row	Lot	Campaign	Branch	Inscription Material; Type of Mrkr; Dimensions ;Faces; Carving; Condition-soiled, stained, delaminating, graffiti, biological, erosion, exfoliation, cracked, tilted/sunken, open joints, fragmented, losses
Giddings	Lula		1/19/1896	2/22/1966		4	3	5			Rose granite headstone 11"t x 16"w x 7"d; faces W; mint carving Concrete slab; tilted/sunken
Harper	Captain	Liggett	4/14/1896	6/8/1978		3	6	9			Shares headstone with Ruth K Harper; Vase in center; cross Grey granite headstone 17"t x 19"w x 6"d; base 2"t x 67"w x 12"d; faces W; mint carving
Harper	Captain	Liggett Jr.	7/10/1942	6/6/1944		3	6	8			White marble headstone 15"t x 24"w x 6"d; faces W; mint carving tilted/sunken
Harper	Elliott	Gerald "Deacon"	9/25/1945	5/20/1981		5	1	5			In loving memory; Photo; vase Grey granite headstone 19"t x 24"w x 7"d; base 7"t x 41"w x 13"d; faces W; mint carving
Harper	Gerald Eugene	"Robbins" "Geno"	12/9/1967	9/24/1990		5	1	6			Tombstone has a set of drums inscribed on it.; And Jesus increased in wisdom and stature, and in favor with God and man Luke 2:52; Photo; vase; Grey granite headstone 19"t x 24"w x 6"d; base 7"t x 41"w x 13"d; faces W; mint carving
Harper	Johnnie	B.	1879	1964		1	1	2			Grey granite headstone 16"w x 8"d; faces w; mint carving
Harper	Lloyd	W.	1943	1944		3	6	13			Limestone headstone 2"t x 28"w x 10"d; faces W; mint carving biological
Harper	Louis	Oleta	9/24/1908	11/18/2003		3	6	11			"Let your light shine" Matthew 5:16 Grey granite headstone 21"t x 19"w x 6"d; base 7"t x 25"w x 13"d; faces W; mint carving
Harper	Mariah			12/27/1937		1	4	1			Age 65 Limestone headstone 24"t x 12"w x 4"d; faces w; mint carving fragmented
Harper	Minnie		7/28/1889	6/9/1963		1	3	1			Mother grey granite headstone 6"t x 24"w x 12"d; faces w; mint carving tilted/sunken
Harper	Rosie		6/4/1890	9/1/1963		1	2	3			In loving memory of our mother Rose granite headstone 12"t x 24"w x 4"d; concrete slab; faces w; mint carving

Evergreen Cemetery  
S13, R18E, T16N, Gibson Station Township

Last Name	First Name	Middle	Date of Birth	Date of Death	Marriage Date	Sec	Blk/Row	Lot	Campaign	Branch	Inscription Material; Type of Mrkr; Dimensions ;Faces; Carving; Condition-soiled, stained, delaminating, graffiti, biological, erosion, exfoliation, cracked, tilted/sunken, open joints, fragmented, losses
Harper	Ruth	K	9/26/1906	4/16/1987		3	6	10			Shares headstone with Captain Liggett Harper; Vase in center; cross Grey granite headstone 17"t x 19"w x 6"d; base 2"t x 67"w x 12"d; faces W; mint carving
Harper	S.	M.	1865	1918		1	2	1			Headstone in shape of tree stump; Odd fell emblem; May he rest in peace; photo Concrete Woodmen of the World headstone 48"t x 12"w x 12"d; base 12"t x 24"w x 24"d; faces w; w; mostly readable; biological
Harper	William		1908	1990		3	6	12	WWII	Navy	Cross White marble military headstone 29"t x 13"w x 4"d; faces W; clear but worn biological
Harris	Anna	Lee	2/23/1905	4/8/1970		2	4	2			Beloved Aunt Grey granite headstone 4"t x 16"w x 8"d; faces w; mint carving
Harris	Levada		1898	1980		2	3	6			Grey granite headstone 7"t x 24"w x 12"d; Base 36"w x 15"d; faces w; mint carving biological
Harris	Timothy	C.	1897	7/30/1967		2	4	1			Beloved Uncle Grey granite headstone 4"t x 16"w x 8"d; faces w; mint carving
Hawkins	Infant	Girl		1940		2	4	24			Asleep in Jesus' Arms; Shares headstone with Olivia Hawkins Grey granite headstone 21"w x 11"d; faces w; mint carving soiled, tilted/sunken
Hawkins	Olivia		1915	1940		2	4	24			Asleep in Jesus' Arms; From your children; Angel with baby; and infant daughter; Grey granite headstone 21"w x 11"d; faces w; mint carving soiled, tilted/sunken
Hay	Bernice	Z.	6/13/1927	12/22/1985		S	1	1			In loving memory; shares stone with Joe Hay Grey granite headstone 7"t x 37"w x 12"d; base 46"w x 20"d; faces W; mint carving soiled; stained; biological; tilted/sunken
Hay	Joe		4/11/1903			S	1	2			In loving memory; shares stone with Bernice Z Hay Grey granite headstone 7"t x 37"w x 12"d; base 46"w x 20"d; faces W; mint carving soiled; stained; biological; tilted/sunken
Hertt	Robert	L.	10/3/1911	3/10/1969		1	1	3	WWII		Oklahoma PVT Co B 1887 Engr BN AVN; Cross Metal military headstone 24"w x 12"d; faces w; mint carving



Evergreen Cemetery  
S13, R18E, T16N, Gibson Station Township

Last Name	First Name	Middle	Date of Birth	Date of Death	Marriage Date	Sec	Blk/Row	Lot	Campaign	Branch	Inscription Material; Type of Mrkr; Dimensions ;Faces; Carving; Condition-soiled, stained, delaminating, graffiti, biological, erosion, exfoliation, cracked, tilted/sunken, open joints, fragmented, losses
Hill	Cordia		2/18/1902	11/14/1982		4	4	12			Grey granite headstone 4"t x 25"w x 12"d; faces W; mint carving biological; stained
Hill	Libbie	E.	11/19/1875	2/19/1972		2	2	4			Mother; Vase with H between RDF Hill and Libbie E Hill Rose granite headstone 16"t x 24"w x 12"d; faces w; mint carving Soiled
Hill	Miles		9/26/1894	9/28/1905		SE Alcove	4	1			Angel statue, head and wings broken Marble headstone 36"t x 12"w x 12"d; base 7"t x 18"w x 18"d; faces E; clear but worn biological, losses
Hill	R.	D.F.	5/10/1868	9/22/1947		2	2	3			Father; Vase with H between RDF Hill and Libbie E Hill Rose granite headstone 16"t x 24"w x 11"d; faces w; mint carving Stained
Hill	Tecumseh		7/26/1896	11/8/1956		4	4	13	WWI		Oklahoma 65 Pioneer INF; Wagoner SUP Co; cross White marble military headstone 21"t x 13"w x 4"d; faces W; clear but worn carving biological; tilted/sunken; losses
Hollingsworth	J.	C.	1865	1948		3	8	6			Father Rose granite headstone 19"t x 25"w x 9"d; faces W; mint carving
Hopkins	Abner		1901	1955		3	5	10			Rose Granite headstone 7"t x 21"w x 4"d; faces W; mint carving tilted/sunken
Hopkins	Artemous		8/31/1925	7/19/2005		5	4	3			A loving father; cross; praying hands Grey granite headstone 5"t x 20"w x 10"d; faces W; mint carving
Hopkins	Houston		1922	1977		3	9	8		Army	PFC White marble military headstone 27"t x 13"w x 4"d; faces W; clear but worn carving biological; erosion
Hopkins	Jean	L.	3/9/1940	1/17/1992		5	4	1			In loving memory Grey granite headstone 6"t x 25"w x 13"d; faces W; mint carving
Hopkins	Jefferson		8/7/1916	6/22/1976		3	7	2			Cross Rose granite headstone 5"t x 25"w x 12"d; faces W; mint carving

Evergreen Cemetery  
S13, R18E, T16N, Gibson Station Township

Last Name	First Name	Middle	Date of Birth	Date of Death	Marriage Date	Sec	Blk/Row	Lot	Campaign	Branch	Inscription Material; Type of Mrkr; Dimensions ;Faces; Carving; Condition-soiled, stained, delaminating, graffiti, biological, erosion, exfoliation, cracked, tilted/sunken, open joints, fragmented, losses
Hopkins	L.	E.	1880	1946		3	6	6			Masonic emblem with laurel; cracked concrete slab Grey granite headstone 11"t x 24"w x 11"d; faces W; clear but worn carving tilted/sunken
Hopkins	Lena	M.	7/17/1916	7/17/1986		3	7	1			A loving mother Rose granite headstone 5"t x 25"w x 12"d; faces W; mint carving
Hopkins	Mary		1883	1944		3	6	7			cracked concrete slab limestone headstone 20"t x 16"w x 4"d; faces W; mint carving stained; biological
Houston	Augustus	Ulysses, Sr.	8/9/1942	4/22/2000		3	9	13			(Auggie Doggie) Grey granite headstone 5"t x 16"w x 8"d; base 28"w x 18"d; faces W; mint carving
Houston	Brent	L.	10/??/1954	10/??/1998		5	7	2			Not Found during 2013 or 2017 survey
Howard	Delbert	Lee	9/18/1948	6/29/2011		5	4	4		Air Force	SSGT; cross White marble military headstone 26"t x 13"w x 4"d; faces W; mint carving
Howard	Provie		5/28/1892	7/29/1914		SE Alcove	3	1			At rest; lamb on top Marble headstone 48"t x 12"w x 5"d; base1 6"t x 16"w x 9"d; base2 3"t x 20"w x 13"d; faces E; clear but worn; biological; iron fencing
Howard	Quintine		1862	1922		2	3	7			Devoted wife affectionate mother and a friend to all; Δ inverted with letters M S T around it.; Concrete headstone 30"t x 12"w x 6"d; Base 6"t x 16"w x 10"d; faces w; mostly readable; soiled, stained, biological, erosion, tilted/sunken
Jackson	Mona	Lisa	9/19/1951	4/2/2004		2	5	2			Loving daughter wife mother & granny granite headstone 14"t x 21"w x 9"d; Base 5"t x 25"w x 13"d; faces w; mint carving
Jamerson	George		8/27/1909	12/30/1986		4	8	6		Army	Cross Metal military headstone 1"t x 24"w x 12"d; faces W; mint carving
Jamerson	J.	C.	2/14/1914	7/11/1985		4	8	7	WWII		"Stonie"; bunny; rose Rose granite headstone 11"t x 19"w x 10"d; faces W; mint carving

Evergreen Cemetery  
S13, R18E, T16N, Gibson Station Township

Last Name	First Name	Middle	Date of Birth	Date of Death	Marriage Date	Sec	Blk/Row	Lot	Campaign	Branch	Inscription Material; Type of Mrkr; Dimensions ;Faces; Carving; Condition-soiled, stained, delaminating, graffiti, biological, erosion, exfoliation, cracked, tilted/sunken, open joints, fragmented, losses
Jamerson	Lucille	"MeMe"	1/21/1921	2/2/2002		4	8	5			In loving memory; Sweetest Woman Ever; "Forever in Our Hearts" Grey granite headstone 16"t x 25"w x 11"d; faces W; mint carving
James	Charlie		3/10/1902	5/21/1980		3	4	5			Cross; Shares headstone with Liberia James Grey granite headstone 2"t x 20"w x 10"d; faces w; mint carving soiled
James	Helen	E.	3/23/1876	1/19/1956		2	5	8			Mother; cross Grey granite headstone 2"t x 24"w x 12"d; faces w; clear but worn; soiled, stained, tilted/sunken
James	Liberia		1/1/1902	5/15/1966		3	4	6			Cross; Shares headstone with Charlie James Grey granite headstone 2"t x 20"w x 10"d; faces W; mint carving soiled
James	Lydia		4/5/1894	2/17/1952		2	3	8			Grey granite headstone 17"w x 9"d; faces w; mint carving tilted/sunken
James	T.	B.	7/18/1904	1/28/1994		2	2	5			Grey granite headstone 21"w x 10"d; faces w; mint carving Soiled, tilted/sunken
James	Vernie		12/29/1896	3/16/1951		3	5	7	WWI		Oklahoma PVT 804 Pioneer INF; Cross White limestone military headstone 29"t x 13"w x 4"d; faces W; clear but worn biological
James-Abernathy	Norma	Lee	7/29/1935	8/21/2003		4	2	1			Beloved mother; Precious memories; Photo; vase; roses Grey granite headstone 17"t x 25"w x 6"d; base 7"t x 36"w x 12"d; faces W; mint carving
Johnson	Annie	C.	6/21/1905	11/24/1975		3	9	3			Grey granite headstone 3"t x 24"w x 12"d; faces W; clear but worn carving Soiled; stained; tilted/sunken
Johnson	Eddie	Samuel	4/30/1928	7/26/2004		5	3	4	Korea	Navy	cross White marble military headstone 25"t x 13"w x 4"d; faces W; mint carving
Johnson	George	Isaac	8/25/1930	2/6/2003		3	8	1			Grey granite headstone 5"t x 25"w x 13"d; base 36"w x 24"d; faces W; mint carving

Evergreen Cemetery  
S13, R18E, T16N, Gibson Station Township

Last Name	First Name	Middle	Date of Birth	Date of Death	Marriage Date	Sec	Blk/Row	Lot	Campaign	Branch	Inscription Material; Type of Mrkr; Dimensions ;Faces; Carving; Condition-soiled, stained, delaminating, graffiti, biological, erosion, exfoliation, cracked, tilted/sunken, open joints, fragmented, losses
Johnson	George	Isaac	1/19/1906	10/7/1947		3	9	1			Grey granite headstone 21"t x 18"w x 6"d; base 6"t x 24"w x 12"d; faces W; mint carving biological; tilted/sunken
Johnson	Hart		1935	2008		3	9	2			Funeral home marker
Jones	Albert		12/2/1913	9/17/1975		3	10	8			In loving memory Grey granite headstone 3"t5 x 16"w x 8"d; faces W; mint carving Tilted/sunken; losses
Jones	Amanda	Mae Hawkins King	5/28/1919	4/28/2000		1	4	14			Photo; Moma; In loving memory of; I'm still blessed; vase grey granite headstone 24"t x 24"w x 6"d; base 6"t x 48"w x 12"d; faces w; mint carving
Jones	Arlevia	Benson	10/26/1905	5/17/1941		3	4	4			Mother; In loving memory; vase Grey granite headstone 15"t x 17"w x 6"d; base 6"t x 31"w x 12"d; faces W; mint carving
Jones	Carl	W., Sr.	2/3/1899	2/16/1997		5	6	5			Grey granite headstone 5"t x 25"w x 12"d; faces W; mint carving stained
Jones	Ellora		2/12/1881	1/23/1932		1	4	8			Mother; vase with J grey granite headstone 24"t x 24"w x 10"d; Base 3"t x 36"w x 12"d; faces w; mint carving
Jones	Elmer		11/18/1900	6/22/1962		3	4	3			Husband Grey granite headstone 15"t x 16"w x 6"d; Base 6"t x 24"w x 12"d; faces W; mint carving
Jones	Estella		1/19/1885	11/22/1937		1	4	9			Grey granite headstone 24"w x 12"d; faces E; mint carving tilted/sunken
Jones	Florene		5/1/1921	1/20/1994		5	6	6			Grey granite headstone 5"t x 24"w x 12"d; faces W; mint carving stained
Jones	Hoyt	Leon	8/1/1910	12/12/1966		1	3	16			Rose granite headstone 24"t x 24"w x 6"d; base 6"t x 30"w x 12"d; faces w; mint carving

Evergreen Cemetery  
S13, R18E, T16N, Gibson Station Township

Last Name	First Name	Middle	Date of Birth	Date of Death	Marriage Date	Sec	Blk/Row	Lot	Campaign	Branch	Inscription Material; Type of Mrkr; Dimensions ;Faces; Carving; Condition-soiled, stained, delaminating, graffiti, biological, erosion, exfoliation, cracked, tilted/sunken, open joints, fragmented, losses
Jones	Ida	Belle Flemons	9/17/1922	4/16/2015		3	4	2			I'm with God now; praying hands; cross grey granite headstone 21"t x 18"w x 7"d; base 7"t x 24"w x 12"d; faces w; mint carving
Jones	John	Henry	1914	1956		1	3	15			Grey granite headstone 12"t x 24"w x 6"d; faces w; mint carving
Jones	Magnolia		4/7/1917	12/3/2013		1	2	12			Resting in the arms of Jesus; crossees Grey granite headstone 16"w x 8"d; mint carving
Jones	Marylin	Joann	7/6/1956	8/12/2010		5	6	8			A loving mom & sister Grey granite headstone 5"t x 24"w x 12"d; faces W; mint carving
Jones	Melvina	F.	12/18/1951	6/20/1998		5	6	7			Rose Grey granite headstone 5"t x 24"w x 12"d; faces W; mint carving
Jones	Monroe		2/12/1905	10/12/1949		1	3	14			Brother grey granite headstone 16"t x 16"w x 6"d; base 6"t x 24"w x 12"d; faces w; mint carving
Kimble	Sharron	Lorayne	6/29/1956	12/10/2004		5	8	6			In loving memory Grey granite headstone 6"t x 20"w x 10"d; faces W; mint carving
King	Clementine	K "Tina"	7/25/1938	5/1/2015		1	4	15			In loving memory; Now I'm resting in peace; crosses; Vase Grey granite headstone 30"t x 24"w x 6"d; base 6"t x 36"w x 12"d; mint carving
King	Johnie	Mae	1/7/1909	3/21/1959		1	4	2			At rest Rose granite headstone 18"t x 12"w x 6"d; faces w; mint carving
Kirby	Lizzie		11/15/1872	6/8/1952		1	4	3			Mother Grey granite headstone 18"t x 12"w x 6"d; faces w; mint carving
Lafayette	Excell	Sr.	7/6/1930	5/20/2008		5	7	8			Cross Grey granite headstone 19"t x 24"w x 6"d; base 7"t x 33"w x 13"d; faces W; mint carving

Evergreen Cemetery  
S13, R18E, T16N, Gibson Station Township

Last Name	First Name	Middle	Date of Birth	Date of Death	Marriage Date	Sec	Blk/Row	Lot	Campaign	Branch	Inscription Material; Type of Mrkr; Dimensions ;Faces; Carving; Condition-soiled, stained, delaminating, graffiti, biological, erosion, exfoliation, cracked, tilted/sunken, open joints, fragmented, losses
Lafayette	Fred	Douglas	9/17/1950	6/25/1997		5	8	11	Vietnam	Army	PFC; cross White marble military headstone 22"t x 13"w x 4"d; faces W; mint carving biological
Lafayette	Jefferson	Boise	3/23/1947	5/19/2002		5	8	10		Army	Cross Grey granite military headstone 25"t x 13"w x 4"d; faces W; mint carving
Lafayette	Mary	Ann	4/28/1909	10/10/1988		4	2	4			Eastern Star emlem; concrete slab Grey granite headstone 10"t x 24"w x 4"d; faces W; mint carving biological; tilted/sunken
Lafayette	Walter	R.	1885	1976		4	2	5			Masonic emblem; Father; cracked concrete slab Grey granite headstone 11"t x 25"w x 6"d; faces W; mint carving
Lawrence	Florida		1879	1962		4	3	6			Broken Concrete slab; Shares headstone with Hiram D. Lawrence Rose granite headstone 7"t x 43"w x 13"d; faces W; mint carving tilted/sunken; stained; biological
Lawrence	Hiram	D.	1877	1960		4	3	7			Broken Concrete slab; Shares headstone with Florida Lawrence granite headstone 7"t x 43"w x 13"d; faces W; mint carving tilted/sunken; stained; biological
Lawrey	Ollie	Mae	2/1/1914	4/5/1983		3	5	8			In loving memory of Grey granite headstone 9"t x 20"w x 8"d; faces W; mint carving tilted/sunken
Lightner	Tomey	E.	1863	1954		2	3	12			Not Found during 2013 or 2017 survey
Lockhart	C.	Mildred	3/14/1944	11/6/1980		3	9	4			Grey granite headstone 2"t x 21"w x 10"d; faces W; mint carving biological; losses; tilted/sunken
Love	Johnnie	Ella	6/24/1908	12/22/1976		4	6	7			In memory of our loving mother Rose granite headstone 19"t x 32"w x 6"d; base 2"t x 44"w x 13"d; faces W; mint carving tilted/sunken
Love	Ruby	Lee (Robbins)	9/2/1907	9/20/1996		5	8	4			Grandmother Momma; Her life was beauty, goodness and love - of such is the Kingdom of Heaven; vase; Rose granite headstone 19"t x 25"w x 10"d; base 7"t x 37"w x 15"d; faces W; mint carving; biological

Evergreen Cemetery  
S13, R18E, T16N, Gibson Station Township

Last Name	First Name	Middle	Date of Birth	Date of Death	Marriage Date	Sec	Blk/Row	Lot	Campaign	Branch	Inscription Material; Type of Mrkr; Dimensions ;Faces; Carving; Condition-soiled, stained, delaminating, graffiti, biological, erosion, exfoliation, cracked, tilted/sunken, open joints, fragmented, losses
Lurks	Elizabeth		5/16/1921	2/3/1997		2	1	11			In loving memory; praying hands grey granite headstone 5"t x 21"w x 11"d; Base 28"w x 18"; faces w; mint carving
Lurks	Hattie	M.	1884	1956		2	1	9			The Lord is my shepherd Grey granite headstone 16"t x 19"w x 7"d; Faces w; mint carving
Lurks	Henry		2/1/1874	6/13/1938		2	1	10			The steps of a good man are ordered by the Lord and he delighteth in his way. Limestone headstone 24"t x 20"w x 6"d; faces w; mint carving soiled, biological, stained
Lurks	Moses		3/3/1923	3/25/1960		2	1	8	WWII		Oklahoma Cpl Quarter Master Corps SS; cross grey granite military headstone 4"t x 24"w x 12"d; faces w; mint carving soiled, tilted/sunken
Lurks	Rosie					2	1	13			Metal Funeral home marker; faces w
Lurks	Sharlee		4/21/1933	5/20/2011		3	8	2			In loving memory Rose granite headstone 5"t x 25"w x 13"d; base 36"w x 24'd; faces W; mint carving
Lurks	Veston	"Babe"	10/23/1911	10/15/1998		2	1	7			In loving memory grey granite headstone 5"t x 20"w x 11"d; faces w; mint carving tilted/sunken
Lyons	Bervert		1/21/1900	3/13/1968		4	6	5			Grey granite headstone 3"t x 24"w x 12"d; faces W; mint carving stained; tilted/sunken; biological
Lyons	Bill	B.	10/10/1929	2/23/1994		4	6	4			Father; In loving memory Grey granite headstone 4"t x 21"w x 11"d; faces W; mint carving
Lyons	Fannie		1907	1988		4	6	6			In loving memory Grey granite headstone 4"t x 20"w x 10"d; faces W; mint carving
Lyons	Neota	Sewell	8/17/1928	5/19/2000		4	6	2			"Auntie"; You're always in our thoughts; praying hands grey granite headstone 15"t x 21"w x 9"d; base 7"t x 32"w x 16"d; faces W; mint carving

Evergreen Cemetery  
S13, R18E, T16N, Gibson Station Township

Last Name	First Name	Middle	Date of Birth	Date of Death	Marriage Date	Sec	Blk/Row	Lot	Campaign	Branch	Inscription Material; Type of Mrkr; Dimensions ;Faces; Carving; Condition-soiled, stained, delaminating, graffiti, biological, erosion, exfoliation, cracked, tilted/sunken, open joints, fragmented, losses
Lyons	Raymond	Curtis	1927	1994		4	5	4			In loving memory Grey granite headstone 5"t x 21"w x 10"d; base 29"w x 23"d; Faces W; mint carving
Masters	Estella		1892	1926		1	1	5			Mother Grey granite headstone 6"t x 24"w x 12"d; concrete slab; faces w; mint carving
Matthews	Melvina	Jones	1914	1988		5	6	4			Photo; In loving memory of Grey granite headstone 2"t x 17"w x 8"d; faces W; mint carving
McGill	Aldeen		1915	8/27/1994		5	4	6			Age 79 years; metal cross made of rebar; Funeral home marker; illegible
McNac	Dorotha					3	7	4			Age 70; Granger House funeral home marker; illegible
Milan	Minnie		2/9/187?	1926		1	3	17			Concrete headstone 12"t x 12"w x 2"d; concrete slab; faces w; mostly readable soiled, biological, tilted/sunken, fragmented, losses
Milan	Walter					1	3	19			Concrete slab; faces w; traces of carving tilted/sunken, cracked
Miller	Clarence	W.	2/27/1928	2/21/1989		3	8	15	WWII	Army	SGT; Shares stone with Neonetta Miller Metal military headstone inset in grey granite headstone 5"t x 67"w x 18"d; faces W; mint carving
Miller	Johnnie	Lee "Poke"	12/2/1941	4/5/2000		5	7	1			Son, Brother, Father, Grandfather; Verse by Helen Steiner Rice on back of stone; Photo; praying hands; vase; Grey granite headstone 18"t x 24"w x 7"d; base 7"t x 41"w x 12"d; faces W; mint carving; tilted/sunken
Miller	Neonetta	L. (Durley)	10/3/1920	6/25/2001		3	8	14			Shares stone with Clarence W. Miller Grey granite headstone 5"t x 67"w x 18"d; faces W; mint carving
Mosley	Ada		10/28/1894	5/15/1973		4	4	8			Photo: Headstone shared with Zettie Mosley Grey granite headstone 6"t x 49"w x 14"d; faces W; mint carving graffiti



Evergreen Cemetery  
S13, R18E, T16N, Gibson Station Township

Last Name	First Name	Middle	Date of Birth	Date of Death	Marriage Date	Sec	Blk/Row	Lot	Campaign	Branch	Inscription Material; Type of Mrkr; Dimensions ;Faces; Carving; Condition-soiled, stained, delaminating, graffiti, biological, erosion, exfoliation, cracked, tilted/sunken, open joints, fragmented, losses
Mosley	Frank		11/3/1954	1/25/2012		4	3	4			Jack's memory chapel funeral home marker; illegible
Mosley	Roy	Lee	12/22/1929	9/4/1986		4	4	7	Korea	Army	Grey granite military headstone 1"t x 24"w x 12"d; faces W; mint carving tilted/sunken
Mosley	Zettie	Jr.	9/16/1926	8/6/2010		4	3	2	WWII	Army	Beloved husband, dad and grandpa; TEC5; cross Grey granite military headstone 27"t x 13"w x 4"d; faces W; mint carving
Mosley	Zettie		7/4/1893	6/7/1971		4	4	9			Photo; Headstone shared with Ada Mosley Grey granite headstone 6"t x 49"w x 14"d; faces W; mint carving graffiti
Mullins	Nancy	Mae	7/15/1959	12/8/2010		3	4	7			Loved always; Sister Mother Aunt; rebar cross grey granite headstone 3"t x 16"w x 8"d; faces w; mint carving tilted/sunken
Newton	A.	D.	9/27/1914	2/10/1964		3	10	2			Concrete slab Grey granite headstone 23"t x 18"w x 6"d; faces W; mint carving soiled
Newton	Aaron		1893	1961		3	7	3			In loving memory Grey granite headstone 4"t x 20"w x 11"d; base 29"w x 16"d; faces W; mint carving biological
Newton	Addie		1904	1950		3	8	9			Mother; rose Grey granite headstone 5"t x 19"w x 10"d; base 36"w x 14"d; faces W; mint carving
Newton	Clemmie		1/9/1895	7/12/1977		3	9	10			Cross, praying hands Rose granite headstone 6"t x 21"w x 10"d; base 35"w x 17"d; faces W; mint carving biological
Newton	Clint	W.	6/19/1941	5/31/2002		3	10	4			Beloved Husband & Father; In loving memory; Crosses; Vase Grey granite headstone 19"t x 24"w x 7d; base 5"t x 41"w x 12"d; concrete slab; faces W; mint carving
Newton	Frank		6/4/1910	3/28/1998		3	10	3			Loving Husband & Father; In loving memory; Crosses Grey granite headstone 19"t x 19"w x 7"d; base 7"t ; Concrete slab; faces W; mint carving

Evergreen Cemetery  
S13, R18E, T16N, Gibson Station Township

Last Name	First Name	Middle	Date of Birth	Date of Death	Marriage Date	Sec	Blk/Row	Lot	Campaign	Branch	Inscription Material; Type of Mrkr; Dimensions ;Faces; Carving; Condition-soiled, stained, delaminating, graffiti, biological, erosion, exfoliation, cracked, tilted/sunken, open joints, fragmented, losses
Newton	James		1/15/1896	7/15/1960		3	8	10	WWI		Oklahoma PVT CO L 804 Pioneer INF; Cross Metal military headstone 2"t x 24"w x 12"d; faces W; mint carving
Okoronkwo	Ike	Chukwu	12/15/1953	11/11/2016		5	9	1			Biglow funeral home marker
Owens	Mary	F.	12/7/1908	10/14/1993		5	4	12			In loving memory; rose; cross Grey granite headstone 4"t x 24"w x 12"d; faces W; mint carving stained
Parker	Jeana	M	10/5/1936	10/15/2013		5	1	11			Grey granite headstone 4"t x 16"w x 8"d; faces W; mint carving
Perryman	Angela	Denise	10/6/1981	12/25/1982		5	3	1			Dusk falls and I close my eyes Rose granite foot stone only 10"t x 21 "w x 4"d; faces W; mint carving
Perryman	Harry	D Jr	1/4/1961	5/11/2016		5	4	5			Age 55; Dyer Memorial Chapel funeral home marker
Poe	Magnolia		7/12/1906	7/1/1921		SE Alcove	1	4			Homemade concrete headstone 14"t x 12"w x 3"d; faces E; worn but legible soiled, biological
Pride	Doris	M.	7/11/1930	6/8/2006		5	8	1			In loving memory of; Loving wife, grandmother & mom Rose granite headstone 5"t x 24"w x 12"d; faces W; mint carving
Pride	Eddie	C.	1/21/1924	4/1/1996		5	8	2			Loving husband, dad & papa; In loving memory; humming bird Rose granite headstone 5"t x 25"w x 13"d; faces W; mint carving
Quinn	George	W.	1898	1948		3	8	5			Rose granite headstone 9"t x 24"w x 3"d; faces W; mint carving soiled; tilted/sunken
Quinn	Mattie	M.	1908	1963		3	8	4			Rose granite headstone 8"t x 24"w x 3"d; faces W; mint carving soiled; tilted/sunken

Evergreen Cemetery  
S13, R18E, T16N, Gibson Station Township

Last Name	First Name	Middle	Date of Birth	Date of Death	Marriage Date	Sec	Blk/Row	Lot	Campaign	Branch	Inscription Material; Type of Mrkr; Dimensions ;Faces; Carving; Condition-soiled, stained, delaminating, graffiti, biological, erosion, exfoliation, cracked, tilted/sunken, open joints, fragmented, losses
Reed	Mrs. Ora	Lee	3/8/1919	11/14/1997		4	6	12			Ragsdale Funeral Home Temporary marker; Age 78; Cement Block losses; fragmented
Rendles	Lizzie		1/6/1881	2/19/1973		SE Alcove	1	5			Cross; flowers grey granite headstone 3"t x 24"w x 12"d; base 30"w x 18"d; faces w; mint carving biological
Richard	Kyle		12/11/1892	2/6/1950		3	10	1	WWI		Texas PVT 522 Engineers; Cross White marble military headstone 22"t x 13"w x 4"d; faces W; clear but worn carving biological; erosion
Richardson	Clem		1899	1967		2	2	2			Grey granite headstone 4"t x 24"w x 12"d; faces w; mint carving Stained, tilted/sunken
Richardson	J.	B.	9/10/1865	11/11/1930		2	1	6			Homemade concrete headstone 4"t x 16"w x 12"d; faces w; clear bu worn biological,erosion, losses
Richardson	Stanley	H.	1894	1968		2	2	1			Rose granite headstone 15"t x 19"w x 8"d; faces w; mint carving tilted/sunken
Robbin-Harper	Ola	Mae	11/13/1945	4/20/2013		5	1	4			In loving memory; Well done, Thou good and faithful servant Matthew 25:21; photo; vase Grey granite headstone 19"t x 25"w x 7"d; base 7"t x 41"w x 13"d; faces W; mint carving
Robbins	Edd	Arvella	2/10/1919	6/11/1995		4	8	9			Shares stone with Jesse Elhue Robbins; vase in center Grey granite headstone 15"t x 16"w x 6"d; base 6"t x 55"w x 13"d; faces W; mint carving tilted/sunken
Robbins	Edna	(Bea) Mae	5/25/1915	5/17/1993		3	5	11			Gone but not forgotten; Mother and Grandmother; In God's care; Flower; Vase with praying hands; Grey granite headstone 19"t x 24"w x 6"d; base 4"t x 40"w x 12"d; faces W; mint carving
Robbins	Hayes	Jr.	11/12/1933	9/5/2014		3	5	13			Angels; photo Black granite headstone 20"t x 18"w x 7"d; base 6"t x 24"w x 12"d; faces W; mint carving
Robbins	Hayes	Sr.	2/15/1909	2/25/1979		3	5	12			Grey granite headstone 11"t x 24"w x 10"d; faces W; mint carving

Evergreen Cemetery  
S13, R18E, T16N, Gibson Station Township

Last Name	First Name	Middle	Date of Birth	Date of Death	Marriage Date	Sec	Blk/Row	Lot	Campaign	Branch	Inscription Material; Type of Mrkr; Dimensions ;Faces; Carving; Condition-soiled, stained, delaminating, graffiti, biological, erosion, exfoliation, cracked, tilted/sunken, open joints, fragmented, losses
Robbins	Jesse	Elhue	1/22/1907	5/2/1983		4	8	10			Shares stone with Edd Arvella Robbins; vase in center Grey granite headstone 15"t x 16"w x 6"d; base 6"t x 55"w x 13"d; faces W; mint carving tilted/sunken
Robbins	John	W.	1869	1946		3	6	3			White limestone headstone 17"t x 11"w x 4"d; faces W; mint carving Biological; erosion
Robbins	Kayla	Brianne	6/11/2008	4/28/2011		3	4	20			Offset in row; Jesus loves the baby Grey granite headstone 4"t x 21"w x 10"d; faces W; mint carving biological; tilted/sunken
Robbins	Maggie	M.	1872	1957		3	6	2			Loving grandmother; We love you; cross; Bible Grey granite headstone 17"t x 15"w x 4"d; base 5"t x 20"w x 10"d; faces W; mint carving
Robbins	Wilson	(Buddy)	5/14/1906	5/15/1983		3	6	1			Beloved uncle & Brother Grey granite headstone 4"t x 24"w x 12"d; faces W; clear but worn biological; stained; tilted/sunken; losses
Roberson	Earl	J. Sr.	7/16/1910	11/20/1983		4	2	10			Father Grey granite headstone 14"t x 20"w x 8"d; faces W; mint carving
Roberson	Earl	Jr.	3/31/1938	8/9/1954		4	1	9			Son Grey granite headstone 11"t x 20"w x 8"d; faces W; mint carving
Roberson	Homer		8/4/1905	11/11/1977		4	6	11			Rose granite headstone 14"t x 14"w x 5"d; faces W; mint carving
Roberson	Huetta	Ellen	2/19/1913	10/4/2001		4	2	9			Mother Grey granite headstone 15"t x 21"w x 8"d; faces W; mint carving
Roberson	Leigh	Ann	6/15/1970	10/27/1972		4	1	8			Angels Rose granite headstone 2"t x 20"w x 10"d; faces W; clear but worn carving
Ross	Charles		5/14/1850	8/14/1943		1	1	8			Marble headstone 18"t x 18"w x 3"d; faces w; mint carving biological, tilted/sunken

Evergreen Cemetery  
S13, R18E, T16N, Gibson Station Township

Last Name	First Name	Middle	Date of Birth	Date of Death	Marriage Date	Sec	Blk/Row	Lot	Campaign	Branch	Inscription Material; Type of Mrkr; Dimensions ;Faces; Carving; Condition-soiled, stained, delaminating, graffiti, biological, erosion, exfoliation, cracked, tilted/sunken, open joints, fragmented, losses
Ross	Charles			8/2/1925		1	2	9		Army	Oklahoma PVT; Cross Marble military headstone 30"t x 12"w x 4"d; faces w; mostly readable biological, erosion
Rucker	Murel		1919	2/4/1944		3	4	1			Homemade concrete headstone in the shape of a cross 3"t x 18"w x 15"d; faces E; mostly readable; biological; fragmented; losses
Runnels	Esther	Kirby	4/5/1900	12/24/1972		1	3	3			Grey granite headstone 24"w x 12"d; faces w; mint carving biological
Ryder	Ida	Mae	1920	1993		3	3	7			In loving memory Grey granite headstone 5"t x 21"w x 11"d; faces W; mint carving
Sanders	George	E.	12/30/1885	11/16/1965		1	3	5			Shares headstone with Norma L. Sanders Grey granite headstone 18"t x 36"w x 12"d; faces w; mint carving biological
Sanders	Luvania		9/6/1908	3/28/1950		3	8	7			Our beloved mother Grey granite headstone 19"t x 25"w x 10"d; base 2"t x 31"w x 15"d; faces W; mint carving tilted/sunken; soiled
Sanders	Norma	L.	9/19/1895			1	3	4			Shares headstone with George E. Sanders Grey granite headstone 18"t x 36"w x 12"d; faces w; mint carving biological
Sanders	Williams	Loron	3/18/1987	7/22/2007		3	8	8			Fisherman and bass carved on stone; Photo Grey granite headstone 18"t x 24"w x 7"d; base1 7"t x 32"w x 12"d; base2 3"t x 42"w x 23"d; faces W; mint carving; tilted/sunken
Scott	Erase	Mae	1915	1963		3	7	6			Grey granite headstone 4"t x 24"w x 11"d; faces W; mint carving stained; biological; tilted/sunken
Scott	Willie	A.	1947	2007		3	7	5			Biglow funeral home marker; illegible
Sewell	Lee	Every	5/10/1923	11/18/1973		4	6	1	WWII	Army	Oklahoma PFC; cross Metal military headstone 1"t x 24"w x 12"d; base 2"t x 30"w x 16"d; faces W; mint carving stained

Evergreen Cemetery  
S13, R18E, T16N, Gibson Station Township

Last Name	First Name	Middle	Date of Birth	Date of Death	Marriage Date	Sec	Blk/Row	Lot	Campaign	Branch	Inscription Material; Type of Mrkr; Dimensions ;Faces; Carving; Condition-soiled, stained, delaminating, graffiti, biological, erosion, exfoliation, cracked, tilted/sunken, open joints, fragmented, losses
Shaver	Bedella	A.	9/11/1917	5/4/1970		3	4	16			Grey granite headstone 22"t x 19"w x 6"d; faces W; mint carving tilted/sunken
Shaver	Everett		3/12/1908	4/9/1978		5	1	1			Vase Grey granite headstone 15"t x 17"w x 6"d; base 6"t x 25"w x 12"d; faces W; mint carving
Shaver	Shirley	Jean	8/25/1939	2/8/2014		5	1	3			We will miss you mother; cross; vase Rose granite headstone 21"t x 19"w x 6"d; base 7"t x 32"w x 13"d; faces W; mint carving
Sisco	Sylvester	Son	10/12/1936	8/31/1991		3	3	4			Beloved father; Rest in Peace; cross Grey granite headstone 4"t x 25"w x 13"d; faces W; mint carving
Sisco	Walter	R.	3/24/1910	1/26/1968		3	3	5	WWII	Army	Oklahoma Tec 5; cross Marble military headstone 24"t x 13"w x 4"d; faces W; mint carving biological; tilted/sunken
Smith	Billy	R Jr	8/5/1973	1/12/2015		5	7	9			Sunrise Fieldstone headstone 25"t x 30"w x 2"d; base 8"t x 32"w x 10"d; faces W; mint carving
Smith	Drucilla		2/25/1927	9/25/1993		4	2	6			Your family loves you, but God loves you best; rose; praying hands Grey granite headstone 18"t x 19"w x 6"d; base 6"t x 30"w x 12"d; faces W; mint carving
Smith	R.	D.	2/16/1926	2/11/1956		4	2	7	WWII		Oklahoma PVT CO A25 Infantry;cross; cracked and sunken concrete slab Grey granite military headstone 10"t x 24"w x 4"d; faces W; mint carving tilted/sunken
Smith	Raymond	"Pick"	12/28/1954	6/9/1983		4	2	8			We love you; concrete slab Grey granite headstone 14"t x 16"w x 4"d; base 2"t x 21"w x 11"d; faces W; mint carving tilted/sunken
Space						5	10	2			
Space						5	10	3			

Evergreen Cemetery  
S13, R18E, T16N, Gibson Station Township

Last Name	First Name	Middle	Date of Birth	Date of Death	Marriage Date	Sec	Blk/Row	Lot	Campaign	Branch	Inscription Material; Type of Mrkr; Dimensions ;Faces; Carving; Condition-soiled, stained, delaminating, graffiti, biological, erosion, exfoliation, cracked, tilted/sunken, open joints, fragmented, losses
Space						5	10	4			
Space						5	10	5			
Space						5	10	6			
Space						5	10	7			
Space						5	10	10			
Space						5	10	11			
Space						5	10	12			
Space						5	10	13			
Space						5	10	14			
Space						5	10	16			
Space						5	10	17			

Evergreen Cemetery  
S13, R18E, T16N, Gibson Station Township

Last Name	First Name	Middle	Date of Birth	Date of Death	Marriage Date	Sec	Blk/Row	Lot	Campaign	Branch	Inscription Material; Type of Mrkr; Dimensions ;Faces; Carving; Condition-soiled, stained, delaminating, graffiti, biological, erosion, exfoliation, cracked, tilted/sunken, open joints, fragmented, losses
Space						5	10	18			
Space						5	10	21			
Spencer	Lillie	L.	12/18/1909	9/25/2001		5	3	3			Grey granite headstone 5"t x 25"w x 13"d; faces W; mint carving
Stanton	Alice			1948		3	1	20			Pink granite headstone 11"t x 15"w x 7"d; faces W; mint carving cracked
Stanton	Charles	V.	9/1909	9/1943		3	1	21			Son Grey granite headstone 17"t x 21"w x 6"d; Base 5"t x 30"w x 12"d; faces W; mint carving Soiled; biological
Stearns	Arzalia	Mae	5/2/1928	8/17/2010		4	1	3			I thank my God upon every remembrance of you Phil 1:3; praying hands; rose granite headstone 6"t x 24"w x 12"d; faces W; mint carving tilted/sunken Rose
Stearns	Phyliss	Ann	2/3/1962	8/15/2002		4	1	6			Age 40; Loving daughter, sister and aunt; We love you Grey granite headstone 7"t x 24"w x 12"d; base 36"w x 24"d; faces W; mint carving
Stearns	Robert	Jr.	10/2/1956	2/24/1958		4	1	5			Grey granite headstone 3"t x 16"w x 8"d; faces W; mint carving losses
Stearns	Robert	Taylor	3/31/1923	11/29/2000		4	1	4		Army	PVT; Beloved Husband, Father, Grandfather, Uncle; Cross White marble military headstone 21"t x 13"w x 4"d; faces W; mint carving
Stephenson	Eugene	T.	11/8/1927	5/20/2009		5	10	8			Vases; Shares stone with Rudene E Stephenson Grey granite headstone 25"t x 48"w x 6"d; base 7"t x 67"w x 13"d; faces W; mint carving
Stephenson	Lorenda		11/27/1900	3/21/2000		S	5	1			Rest in Peace Grey granite headstone 5"t x 24"w x 13"d; faces W; mint carving stained; tilted/sunken; soiled



Evergreen Cemetery  
S13, R18E, T16N, Gibson Station Township

Last Name	First Name	Middle	Date of Birth	Date of Death	Marriage Date	Sec	Blk/Row	Lot	Campaign	Branch	Inscription Material; Type of Mrkr; Dimensions ;Faces; Carving; Condition-soiled, stained, delaminating, graffiti, biological, erosion, exfoliation, cracked, tilted/sunken, open joints, fragmented, losses
Stephenson	Odessa	Marie	3/24/1924	4/15/2008		3	2	7			Offset from row Metal Ragsdale funeral home marker; faces W; clear but worn losses
Stephenson	Rev. Henry	M.	2/17/1902	7/28/2000		S	5	2			Rest in Peace Grey granite headstone 7"t x 25"w x 13"d; faces W; mint carving tilted/sunken
Stephenson	Rudene	E.	4/13/1931	12/2/2010		5	10	9			Vases; Shares stone with Eugene T Stephenson Grey granite headstone 25"t x 48"w x 6"d; base 7"t x 67"w x 13"d; faces W; mint carving
Stevenson	Delorse	F.	1/3/1941	12/6/1975		1	3	20			In loving memory grey granite headstone 18"w x 8"d; faces w; mint carving
Stevenson	Tarline		4/21/1917	8/22/2006		S	3	1			In God's care; cross; praying hands; vase Grey granite headstone 18"t x 24"w x 7"d; base 7"t x 36"w x 13"d; faces W; mint carving
Strong	M.	E.	1899	1918		2	1	1			At rest; Broken Concrete headstone 26"t x 14"w x 2"d; faces w; clear but worn Biological, tilted/sunken, losses
Tamplin	Albert		9/22/1889	7/26/1963		2	6	1	WWI		Oklahoma CPL CO K 809 Pioneer INF; Cross White marble military headstone 3"t x 24"w x 12"d; faces W; clear but worn Soiled, stained, biological; tilted/sunken/losses
Teem	Osco		9/2/1909	12/3/1996		5	7	13			Not Found during 2013 or 2017 survey
Turner	Cleo	Elizabeth	4/27/1932	7/24/1993		3	3	8			Mother Rose granite headstone 18"t x 24"w x 7"d; Base 2"t x 36"w x 12"d; faces W; mint carving
Turner	Cleveland		11/29/1895	4/2/1957		3	4	23			Husband Rose granite headstone 23"t x 18"w x 6"d; Base 5"t x 25"w x 12"d; faces w; mint carving
Turner	Ruby	C.	7/8/1907	11/19/1990		3	4	22			Mother Rose granite headstone 23"t x 18"w x 6"d; Base 5"t x 25"w x 12"d; faces w; mint carving

Evergreen Cemetery  
S13, R18E, T16N, Gibson Station Township

Last Name	First Name	Middle	Date of Birth	Date of Death	Marriage Date	Sec	Blk/Row	Lot	Campaign	Branch	Inscription Material; Type of Mrkr; Dimensions ;Faces; Carving; Condition-soiled, stained, delaminating, graffiti, biological, erosion, exfoliation, cracked, tilted/sunken, open joints, fragmented, losses
Unknown						1	1	4			Illegible concrete headstone 3"t x 18"w x 9"d; faces w Soiled, delamination, biological, losses
Unknown						1	1	6			Illegible concrete headstone 18"w x 8"d; concrete slab; faces w delaminating, biological, tilted/sunken
Unknown						1	2	4			Rock marker; no info; concrete marker delaminating, losses
Unknown						1	2	5			Concrete headstone; Concrete slab; faces w biological, tilted/sunken, losses
Unknown						1	2	6			Concrete headstone; concrete slab soiled, delaminating, tilted/sunken, fragmented, losses
Unknown						1	2	7			Cement covering grave w/cement heastone - no info Not found during 2017 survey
Unknown						1	2	8			Marble headmarker - no info 12"t x 12"w x 12"d; faces w fragmented
Unknown						1	2	10			Metal Funeral Home marker - no info losses
Unknown						1	2	11			Broken limestone headstone
Unknown						1	3	2			Temporary marker with no info; Hersman Nichols funeral home, Wagoner, OK losses
Unknown						1	3	7			Funeral home marker losses

Evergreen Cemetery  
S13, R18E, T16N, Gibson Station Township

Last Name	First Name	Middle	Date of Birth	Date of Death	Marriage Date	Sec	Blk/Row	Lot	Campaign	Branch	Inscription Material; Type of Mrkr; Dimensions ;Faces; Carving; Condition-soiled, stained, delaminating, graffiti, biological, erosion, exfoliation, cracked, tilted/sunken, open joints, fragmented, losses
Unknown						1	3	18			Concrete slab; faces w tilted/sunken, cracked
Unknown						1	4	11			Rebar cross only
Unknown						1	4	12			Concrete headstone; concrete slab; faces w; concrete curbing cracked, tilted/sunken; fragmented
Unknown						1	4	13			Cement slab with cement marker; no info; concrete curbing; faces w tilted/sunken
Unknown						2	1	4			Rock marker; no info 8"t x 7"w x 5"d; faces E Biological, fragmented, losses
Unknown						2	2	6			Cement block marker - no info 4"t 5"w x 16"d soiled, stained, biological, erosion, tilted/sunken
Unknown						2	2	7			Rose colored cement marker 6"t x 12"w x 2"d; faces w Soiled, stained, biological, losses
Unknown						2	2	8			Limestone base only 5"t x 17"w x 6"d; faces w biological, fragmented, losses
Unknown						2	3	10			Cement stone - no info 10"t x 15"w x 2"d; faces w illegible, biological, losses
Unknown						2	3	11			Cement stone - no info 15"t x 16"w x 2"d; faces w illegible, biological, losses
Unknown						2	5	5			Cement block marker - no info; Wooden cross 3"t x 15"w x 7"d; faces w; biological, fragmented, erosion

Evergreen Cemetery  
S13, R18E, T16N, Gibson Station Township

Last Name	First Name	Middle	Date of Birth	Date of Death	Marriage Date	Sec	Blk/Row	Lot	Campaign	Branch	Inscription Material; Type of Mrkr; Dimensions ;Faces; Carving; Condition-soiled, stained, delaminating, graffiti, biological, erosion, exfoliation, cracked, tilted/sunken, open joints, fragmented, losses
Unknown						2	5	7			Limestone headstone 17"t x 10"w x 5"d; faces w; stained, biological, tilted/sunken
Unknown						2	6	5			Concrete block headstone 15"w x 8"d illegible soiled, stained, biological, tilted/sunken
Unknown						2	6	6			Rebar cross only, no info on it 21"t x 20"w
Unknown						2	6	7			Rebar cross only, no info on it 25"t x 20"w
Unknown						2	7	2			Cement marker un-readable Concrete headstone 10"t x 5"w x 6"d; faces w erosion; tilted/sunken; losses Biological;
Unknown						3	2	3			Grey marker stone; no name or info Grey limestone headstone 3"t x 11"w x 11"d; faces W; illegible biological;erosion;tilted/sunken; fragmented;losses
Unknown						3	2	4			Rebar cross; temporary marker unreadable Metal funeral home marker; faces W; illegible losses
Unknown						3	3	6			Marble headstone 2"t x 13"w x 7"d; faces W; illegible losses
Unknown						3	5	2			rebar cross and funeral home marker; illegible losses
Unknown						3	8	3			Cement - no information; marker broken Concrete headstone 3"t x 10"w x 14"d; faces W; illegible carving Biological; cracked; fragmented; erosion
Unknown						3	8	11			Two graves side by side with twin size iron bedsteads. No information on graves.

Evergreen Cemetery  
S13, R18E, T16N, Gibson Station Township

Last Name	First Name	Middle	Date of Birth	Date of Death	Marriage Date	Sec	Blk/Row	Lot	Campaign	Branch	Inscription Material; Type of Mrkr; Dimensions ;Faces; Carving; Condition-soiled, stained, delaminating, graffiti, biological, erosion, exfoliation, cracked, tilted/sunken, open joints, fragmented, losses
Unknown						3	8	12			Two graves side by side with twin size iron bedsteads. No information on graves.
Unknown						3	8	13			Broken concrete slab with broken brick embedded in it
Unknown						4	4	11			Rebar cross only
Unknown						4	5	10			Broken Concrete block
Unknown						4	5	11			Funeral home marker; illegible
Unknown						4	5	12			No marker; Not found during 2013 or 2017 survey
Unknown						4	5	14			Funeral home marker; illegible
Unknown						4	6	10			Rebar cross only, no marker
Unknown						4	8	4			Concrete marker, no name; Not found during 2017 survey
Unknown						4	8	8			No name rebar cross marker and funeral home marker; illegible
Unknown						5	1	2			Rebar cross only

Evergreen Cemetery  
S13, R18E, T16N, Gibson Station Township

Last Name	First Name	Middle	Date of Birth	Date of Death	Marriage Date	Sec	Blk/Row	Lot	Campaign	Branch	Inscription Material; Type of Mrkr; Dimensions ;Faces; Carving; Condition-soiled, stained, delaminating, graffiti, biological, erosion, exfoliation, cracked, tilted/sunken, open joints, fragmented, losses
Unknown						5	4	7			Temporary marker, Jackson Memory Chapel, Tulsa, OK; Metal cross made of rebar; illegible
Unknown						5	4	10			Temporary marker, metal cross made of rebar; illegible losses
Unknown						5	6	2			Metal temporary marker; metal rebar cross; illegible losses
Unknown						5	8	5			Metal marker; Hersman-Nickals Funeral marker; no info; illegible
Unknown						S	4	1			Rebar Cross only
Unknown						S	6	1			Rebar Cross only
Unknown						SE Alcove	1	2			Metal post (knocked over); Concrete block biological
Unknown						SE Alcove	1	3			Two concrete blocks and a fieldstone biological
Unknown						SE Alcove	2	3			Rock, sandstone. Illegible 12"t x 15"w x 4"d biological
Unknown						SE Alcove	3	2			Rock, sandstone. Illegible 6"t x 24"w x 12"d biological
Unknown						SE Alcove	3	11			Broken granite block

Evergreen Cemetery  
S13, R18E, T16N, Gibson Station Township

Last Name	First Name	Middle	Date of Birth	Date of Death	Marriage Date	Sec	Blk/Row	Lot	Campaign	Branch	Inscription Material; Type of Mrkr; Dimensions ;Faces; Carving; Condition-soiled, stained, delaminating, graffiti, biological, erosion, exfoliation, cracked, tilted/sunken, open joints, fragmented, losses
Unknown						SE Alcove	4	2			Funeral home marker; concrete slab; faces w soiled, stained, biological, cracked, tilted/sunken, fragmented
Vaughn	Latrece	Renett	5/27/1970	2/5/2008		5	10	1			Age 37; Funeral Home Marker
Vaughn	Omer		8/1/1892	5/12/1961		1	2	2	WWI	Army	Oklahoma PFC; cross Limestone tablet with slotted base military marker 30"t x 12"w x 4"d; base 18"w x 12"d; faces w; clear but worn; soiled, biological
Veasey	Cleota		2/8/1927	4/28/1999		4	5	1			Gone to be with Jesus; praying hands Grey granite headstone 16"t x 21"w x 10"d; base 6"t x 32"w x 17"d; faces W; mint carving
Webber	Alice		2/6/1893	3/24/1979		2	6	2			Grey granite headstone 3"t x 22"w x 12"d; faces W; Clear but worn; soiled, stained, biological
Wilkerson	Jesse	G.	5/3/1907	2/27/1987		5	4	14			In loving memory; crosses Grey granite headstone 4"t x 24"w x 12"d; faces W; mint carving biological; stained
Wilkerson	Marguerite	F.	12/31/1919	12/10/1990		5	4	13			In loving memory; cross Grey granite 4"t x 24"w x 12"d; faces W; mint carving stained
Willhite	Daniel	W.	11/24/1916	2/12/1988		4	5				Not found during 2013 or 2017 survey
Willhite	Opal	M.	8/27/1908			4	5				Not found during 2013 or 2017 survey
Williams	Alene		6/19/1905	4/13/1960		4	4	10			Grey granite headstone 4"t x 24"w x 12"d; faces w; mint carving tilted/sunken; losses
Williams	Doshie		6/1/1911	11/3/1962		4	1	2			Mother Grey granite headstone 5"t x 24"w x 12"d; faces W; mint carving stained; losses

Evergreen Cemetery  
S13, R18E, T16N, Gibson Station Township

Last Name	First Name	Middle	Date of Birth	Date of Death	Marriage Date	Sec	Blk/Row	Lot	Campaign	Branch	Inscription Material; Type of Mrkr; Dimensions ;Faces; Carving; Condition-soiled, stained, delaminating, graffiti, biological, erosion, exfoliation, cracked, tilted/sunken, open joints, fragmented, losses
Williams	Ernest	Sr.	10/29/1908	3/10/1997		4	1	1			Daddy; Cross Grey granite headstone 2"t x 19"w x 10"d; faces W; mint carving
Williams	Estella		5/27/1899	5/12/1966		2	5	1			Grey granite headstone 4"t x 25"w x 12"d; faces W; mint carving biological
Williams	Florence		5/11/1883	6/21/1953		2	5	4			Mother Grey granite headstone 13"t x 24"w x 9"d; faces w; mint carving tilted/sunken
Williams	James	G.	8/11/1912	5/15/1952		2	3	3	WWII		Oklahoma SFC 9953 TECH SVC Unit; Cross White marble military headstone 4"t x 24"w x 12"d; faces w; mint carving soiled, stained
Williams	Lilly		1888	1937		2	3	9			Blessed are the dead that die in the Lord; Crucifix emblem; Headstone in shape of cross concrete headstone 20"t x 14"w x 4"d; Base 21"w x 8"d; faces W; clear but worn stained, biological
Williams	Milta			6/12/1924		1	1	7			Silver queen chamber 2973 Wybark, OK Mosaic Templars of America emblem Limestone headstone 36"t x 18"w x 4"d; Base 12"t x 12"w x 12"d; faces w; clear but worn soiled, fragmented
Williams	Rev. David		2/28/1930	10/3/2000		3	3	3			Here lies a man; Age 70; Loving memory; vase Black granite headstone 18"t x 24"w x 7"d; base 7"t x 40"w x 12"d; faces W; mint carving
Wilson	Brenton	Allen	1/30/2007	8/21/2010		5	10	15			Age 3 Lescher-Millsap Funeral Home Marker, Muskogee
Woodard	Lum			12/8/1961		3	2	1			91 years old Grey granite headstone 22"t x 18"w x 7"d; base 6"t x 24"w x 12"d; faces w; mint carving biological
Worthem	Fred		1/22/1907	6/11/1995		SE Alcove	1	7			The Lord is my shepherd; praying hands Rose granite headstone 6"t x 24"w x 12"d; base 2"t x 30"w x 18"d; faces w; mint carving
Worthem	Frey		3/19/1908	5/18/1986		SE Alcove	1	6	WWII	Army	S SGT; Cross Metal military marker 24"w x 12"d; base 30"w x 18"d; faces w; mint carving biological, tilted/sunken



Evergreen Cemetery  
S13, R18E, T16N, Gibson Station Township

Last Name	First Name	Middle	Date of Birth	Date of Death	Marriage Date	Sec	Blk/ Row	Lot	Campaign	Branch	Inscription Material; Type of Mrkr; Dimensions ;Faces; Carving; Condition-soiled, stained, delaminating, graffiti, biological, erosion, exfoliation, cracked, tilted/sunken, open joints, fragmented, losses
Young	Pearl	Minter	12/8/1888	1/1/1981		4	5	9			Grey granite headstone 3"t x 21"w x 10"d; faces W; mint carving tilted/sunken; losses