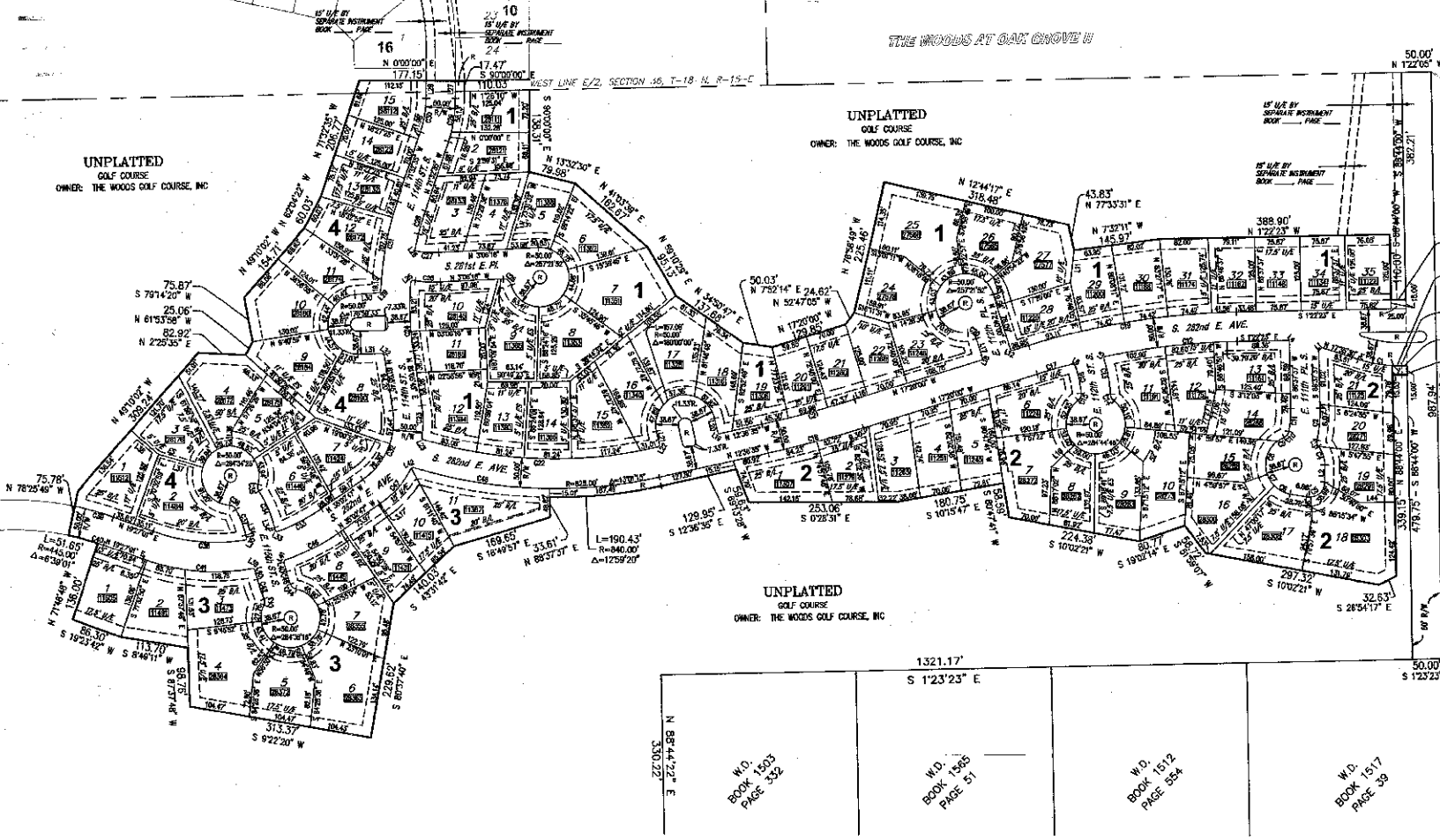
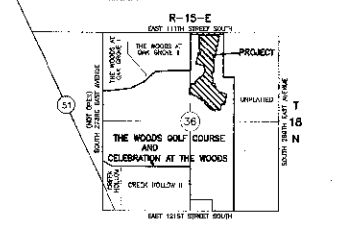


REPLAT

# CELEBRATION AT THE WOODS I

AN ADDITION TO THE CITY OF COWETA, LOCATED IN SECTION 36, TOWNSHIP 18 NORTH, RANGE 15 EAST, WAGONER COUNTY, STATE OF OKLAHOMA

PLC5-408B



POINT OF BEGINNING  
NORTHWEST CORNER W/2 NE/4,  
SECTION 36, T-18-N, R-15-E  
(FOUND 3/8" IRON PIN)

TOTAL ACREAGE = 28.76 AC  
SUBDIVISION CONTAINS EIGHTY TWO (82) LOTS  
IN FOUR (4) BLOCKS

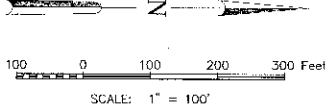
BLOCK 1 CONTAINS 35 LOTS  
BLOCK 2 CONTAINS 21 LOTS  
BLOCK 3 CONTAINS 11 LOTS  
BLOCK 4 CONTAINS 15 LOTS

- LEGEND
- U/E UTILITY EASEMENT
  - B/L BUILDING SETBACK LINE
  - R/W RIGHT OF WAY
  - ES EACH SIDE
  - R RESERVE AREA/LANDSCAPE EASEMENT
  - STREET ADDRESS
- NOTE: LIMITS OF RESERVE AREAS ARE BOUNDED BY THE BACK OF CURB.

LINE #	LENGTH	BEARING	AREA	LENGTH	RADIUS	DELTA
L1	7.28	N 363°27' W	C1	58.45	225.00	145°25'
L2	28.78	N 102°21' W	C2	53.64	225.00	135°35'
L3	28.78	S 102°21' W	C3	12.28	14.00	207°56'
L4	2.00	S 43°37' W	C4	45.00	50.00	201°40'
L5	3.65	N 57°22' E	C5	45.00	50.00	100°21'
L6	3.22	N 27°22' E	C6	30.42	50.00	345°18'
L7	71.00	N 40°54' E	C7	22.28	50.00	25°30'25"
L8	41.87	S 19°18' E	C8	83.23	50.00	72°27'22"
L9	50.00	N 37°48' E	C9	11.97	33.00	334°41'
L10	54.23	S 43°22' E	D10	13.82	14.00	204°52'00"
L11	56.21	N 83°45' E	D11	38.40	175.00	123°24'
L12	2.71	N 20°50' E	D12	226.29	1235.00	182°70'
L13	85.28	N 47°22' W	D13	62.17	225.00	195°04'
L14	25.96	N 70°12' E	D14	12.28	14.00	184°49'
L15	70.00	S 64°10' W	D15	13.84	14.00	26°38'42"
L16	22.84	S 17°20' W	D16	49.54	175.00	161°30'
L17	34.83	N 72°40' E	D17	83.23	125.00	256°03"
L18	3.17	S 62°20' E	D18	186.83	2025.00	143°25"
L19	3.17	N 23°22' E	E19	32.67	125.00	105°37'
L20	24.54	S 77°22' E	E20	18.50	14.00	172°10'
L21	24.45	N 77°22' E	E21	182.63	1876.00	443°25"
L22	3.16	N 56°16'21" W	E22	403.80	775.00	259°11"
L23	3.34	S 82°22' W	E23	54.62	176.00	167°38'
L24	84.21	N 74°24'40" W	E24	116.40	500.00	132°01'
L25	3.14	N 38°44'17" W	E25	41.91	225.00	104°02'
L26	3.13	N 54°08'30" E	E26	18.90	14.00	77°21'52"
L27	11.54	S 90°00'00" E	E27	32.60	175.00	104°02'00"
L28	23.30	S 90°00'00" E	E28	67.74	500.00	74°45'
L29	3.22	N 45°39'57" W	E29	74.41	231.00	182°22'
L30	41.29	S 44°48' E	E30	58.31	181.00	182°22'
L31	41.27	N 44°52' E	E31	154.81	550.00	181°38'
L32	3.84	N 39°41'12" E	E32	133.74	120.00	83°07'27"
L33	3.12	N 28°10'47" E	E33	84.17	310.00	157°09'
L34	3.89	S 75°13'30" W	E34	67.77	225.00	170°48'
L35	3.12	N 67°02'33" W	E35	11.77	14.00	481°47"
L36	28.00	N 87°23'47" W	E36	14.27	14.00	58°23'24"
L37	77.39	S 10°22'24" W	E37	16.22	175.00	105°00'
L38	61.70	S 40°45'58" W	E38	138.84	375.00	166°58'
L39	3.21	N 32°10'00" E	E39	58.08	496.00	75°50'
L40	16.77	N 75°15'22" E	E40	9.58	445.00	113°46'
L41	3.28	N 67°43'08" W	E41	190.81	365.00	285°07'
L42	3.28	N 28°08'57" W	E42	34.52	225.00	194°67'
L43	60.00	S 37°00'58" E	E43	11.86	14.00	483°74'
L44	63.84	N 47°07'52" E	E44	14.13	14.00	67°48'49"
L45	59.89	N 01°16'00" W	E45	21.30	175.00	700°15'
L46			E46	101.87	355.00	135°59'58"
			E47	88.91	120.00	276°15'
			E48	233.54	825.00	191°09'

**PROJECT MANAGER**  
GEORGE E. DAY JR., P.E.  
16771 SOUTH 263RD EAST AVENUE  
COWETA, OKLAHOMA 74429  
PHONE: 918.857.6245

**OWNER**  
THE WOODS GOLF COURSE, INC.  
P.O. BOX 745  
COWETA, OKLAHOMA 74429  
PHONE: 918.627.6000



**ENGINEER/LAND SURVEYOR**  
COOK & ASSOCIATES ENGINEERING INC.  
1124 N. WAGONER, COWETA, OKLAHOMA 74429  
PHONE: 918.627.6000

**LAND PLANNER**  
PITTMAN POE & ASSOCIATES, INC.  
1708 WEST GRANGER STREET  
BROKEN ARROW, OKLAHOMA 74012  
PHONE: 918.356.8562

A REPLAT OF  
CELEBRATION AT THE WOODS I  
SHEET 1 OF 3  
DATE OF PREPARATION: OCTOBER 13, 2009