

Planned Unit Development No. 66

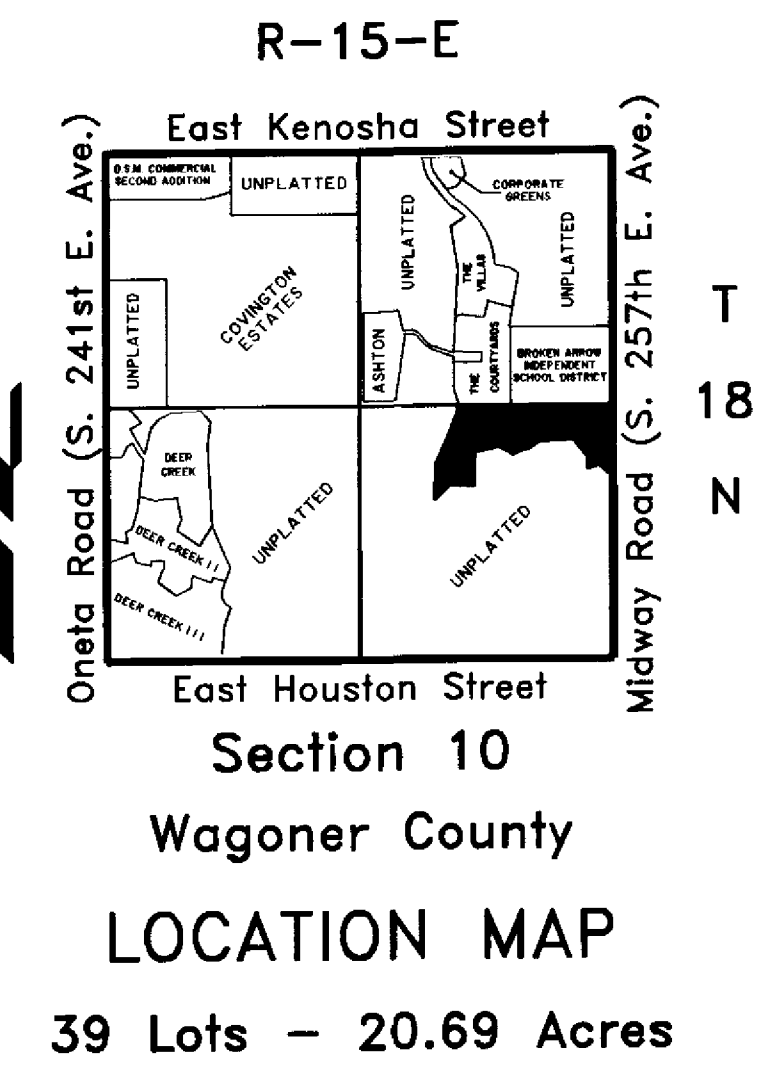
The Courtyards II at Forest Ridge

An Addition to the City of Broken Arrow
 Being a Subdivision of a part of the N/2 of the SE/4 of Section 10,
 T-18-N, R-15-E, of the Indian Meridian, Wagoner County, State of Oklahoma

APPROVED 11/6/95 by the City Council of the City of Broken Arrow, Oklahoma.
 James C. Reynolds / s/ Mayor
 Brenda Richards / s/ Attest: City Clerk

OWNER:
The Robson Companies, Inc.
 an Oklahoma corporation
 7501 East Kenosha Street
 Broken Arrow, Oklahoma 74014
 Phone: (918) 357-2787

ENGINEER:
Tulsa Engineering & Planning Associates, Inc.
 an Oklahoma corporation
 8209 East 63rd Place South
 Tulsa, Oklahoma 74133
 Phone: (918) 252-9621

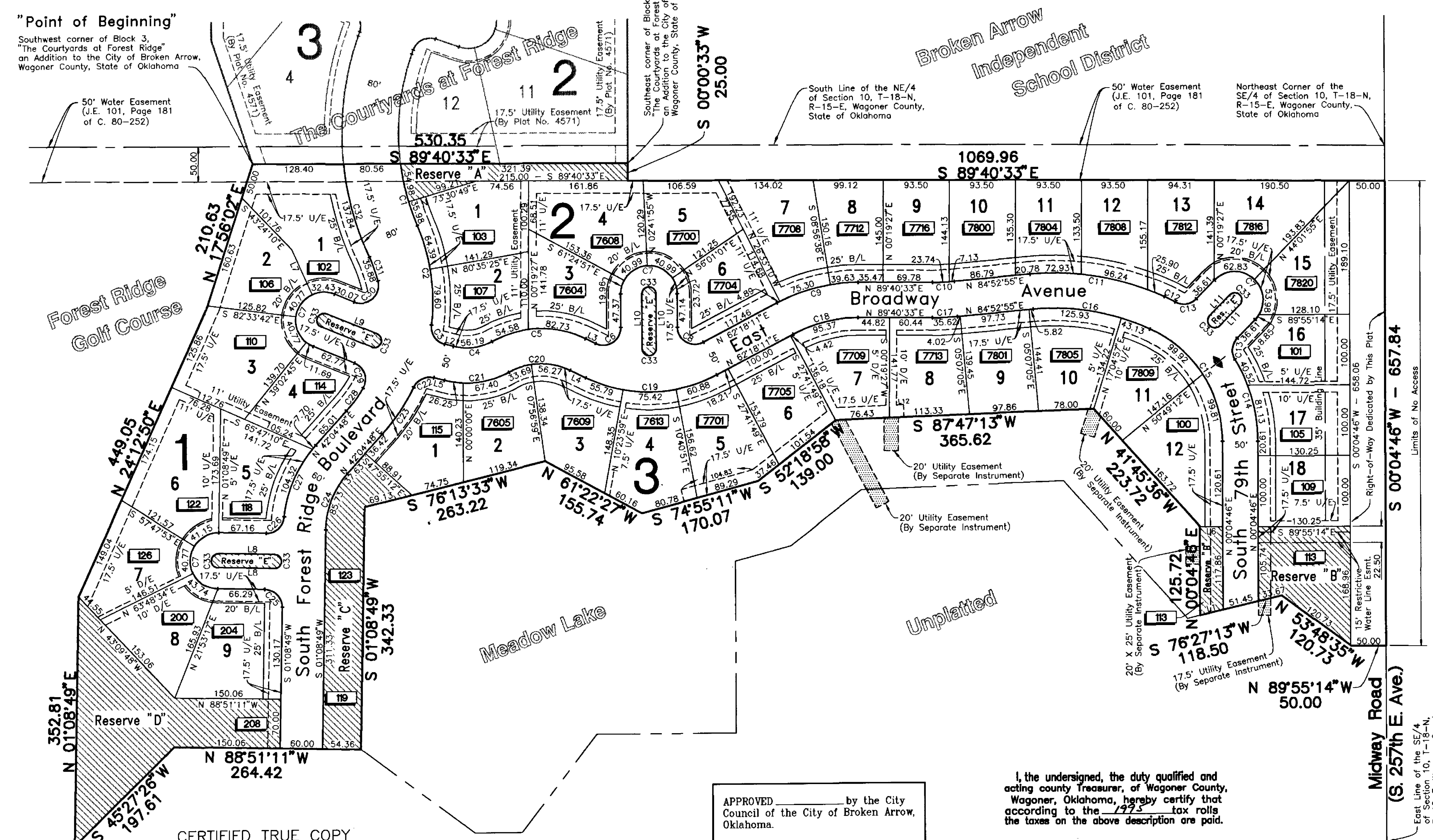


Curve Table

NO.	DELTA	RADIUS	ARC
C1	15°25'11"	338.00	90.96
C2	29°27'50"	280.00	143.99
C3	82°13'11"	25.00	35.88
C4	42°55'30"	75.00	56.19
C5	54°15'29"	145.00	137.31
C6	115°59'29"	25.00	50.61
C7	180°00'00"	40.00	125.66
C8	117°41'49"	25.00	51.35
C9	28°01'16"	245.00	119.82
C10	05°26'32"	325.00	30.87
C11	29°48'18"	375.00	195.07
C12	04°16'30"	225.00	16.79
C13	74°55'48"	25.00	32.69
C14	30°58'38"	225.00	121.65
C15	65°23'33"	175.00	199.73
C16	29°48'18"	325.00	169.06
C17	05°26'32"	375.00	35.62
C18	28°01'16"	195.00	95.37
C19	53°41'18"	205.00	192.09
C20	54°15'29"	95.00	89.96
C21	42°55'30"	125.00	93.65
C22	78°54'05"	25.00	34.43
C23	18°19'24"	280.00	79.77
C24	40°55'59"	120.00	85.73
C25	90°00'00"	25.00	39.27
C26	84°43'32"	25.00	36.97
C27	35°39'31"	180.00	112.02
C28	11°23'00"	200.00	39.74
C29	98°24'05"	25.00	42.94
C30	126°38'15"	25.00	55.26
C31	10°16'42"	200.00	35.88
C32	18°53'38"	418.00	137.84
C33	180°00'00"	10.00	31.42

Line Table

NO.	BEARING	DISTANCE
L1	S 76°27'13"W	33.38
L2	S 75°20'30"E	12.68
L3	S 64°00'31"E	15.77
L4	S 64°00'31"E	24.70
L5	S 75°20'30"E	15.58
L6	S 89°55'14"E	32.44
L7	S 24°10'09"E	70.00
L8	N 88°51'11"W	79.29
L9	N 67°42'17"W	77.14
L10	N 00°00'00"E	77.44
L11	N 44°01'55"E	41.02
L12	S 87°47'13"W	9.80



Backflow Preventer Valve Table

BLOCKS	LOTS	PROPOSED FINISH FLOOR ELEVATION	UPSTREAM MANHOLE	TOP OF RIM ELEVATION	BLOCKS	LOTS	PROPOSED FINISH FLOOR ELEVATION	UPSTREAM MANHOLE	TOP OF RIM ELEVATION
BLOCK 1	1	635.0	1	632.0	BLOCK 2	1	644.8	19	642.6
	2	635.4	2	632.0		2	646.5	20	644.9
	3	635.2	3	629.4		4	647.9	e	645.1
	4	634.6	a	630.9		15	648.7	e	645.1
	5	633.6	a	630.9		16	648.7	22	646.8
	6	633.0	a	627.0		17	649.6	22	646.8
	7	631.3	6	627.0		18	650.5	23	647.5
	8	631.8	5	630.5					
	9	634.3	5	630.5					
BLOCK 2	1	636.3	9	632.6	1	634.5	11	633.0	
	2	635.4	9	632.6	2	634.8	11	633.0	
	3	636.8	9	632.6	3	635.7	10	632.7	
	4	637.2	8	634.7	4	636.2	b	633.5	
	5	637.8	12	636.0	5	637.6	15	634.7	
	6	638.1	13	636.4	6	638.5	15	634.7	
	7	639.2	17	637.0	7	638.8	14	636.9	
	8	639.3	18	639.7	8	640.2	c	638.1	
	9	639.9	18	639.7	9	642.0	d	639.7	
	10	641.6	18	639.7	10	643.8	d	639.7	
	11	643.2	19	642.6	11	646.1	f	645.1	

If the actual finish floor elevation is lower than one (1) foot above the top of rim elevation of the upstream manhole, it shall be the builder's responsibility to install a Backflow Preventer Valve near the building according to Broken Arrow Ordinance No. 1777, Section 24-100, Adopted May 17, 1993.
 * These lots require backflow preventer valve.

Benchmark
 Top of a brass cap on top of the curb at the west end of the curb island in the cul-de-sac opposite the entrance to "Ashton at Forest Ridge" on Forest Ridge Boulevard. ELEVATION = 630.18 N.G.V.D. 1929

Basis of Bearings
 The basis of bearings is an assumed bearing of S 00°04'46"W along the east line of the SE/4 of Section 10, T-18-N, R-15-E, of the Indian Meridian, Wagoner County, State of Oklahoma.

Legend

U/E = Utility Easement	[Symbol] = Utility Easement (By Separate Instrument)
B/L = Building Line	[Symbol] = Reserve Area
D/E = Drainage Easement	[Symbol] = Civil Suit
J.E. = Journal Entry	
C. = Civil Suit	

Monument Notes

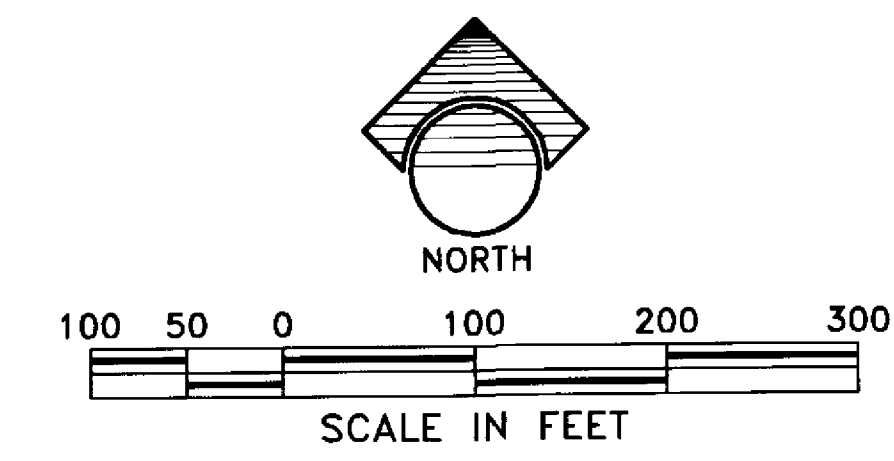
A 5/8" x 18" deformed bar with a yellow plastic cap stamped "RLS 1253" to be set at all plat boundary corners, prior to recordation unless noted otherwise.

A 3/8" x 18" deformed bar with a yellow plastic cap stamped "RLS 1253" to be set at all lot corners after completion of improvements, unless noted otherwise.

A 3/8" x 18" deformed bar with a yellow plastic cap stamped "RLS 1253" to be set at all street centerline intersections, points of curve, points of tangent, points of compound curve, points of reverse curve, center of cul-de-sacs and center of eyebrows, after completion of improvements, unless noted otherwise.

Lot Addresses [0000]

Addresses shown on this Plat provided by the City of Broken Arrow Planning Department are accurate at the time the plat was filed, and the addresses are subject to change and should not be relied on in place of the legal description.



CERTIFIED TRUE COPY
 JERRY FIELDS COUNTY CLERK
 Wagoner County, Okla.
 By _____ DEPUTY

APPROVED _____ by the City Council of the City of Broken Arrow, Oklahoma.
 Mayor _____
 Attest: City Clerk _____

I, the undersigned, the duly qualified and acting county treasurer of Wagoner County, Wagoner, Oklahoma, hereby certify that according to the 1995 tax rolls the taxes on the above description are paid.
 Mary Sue Tedder, County Treasurer
 Deputy