

Plot Column #3-293 A & B

Planned Unit Development No. 66

The Courtyards at Forest Ridge

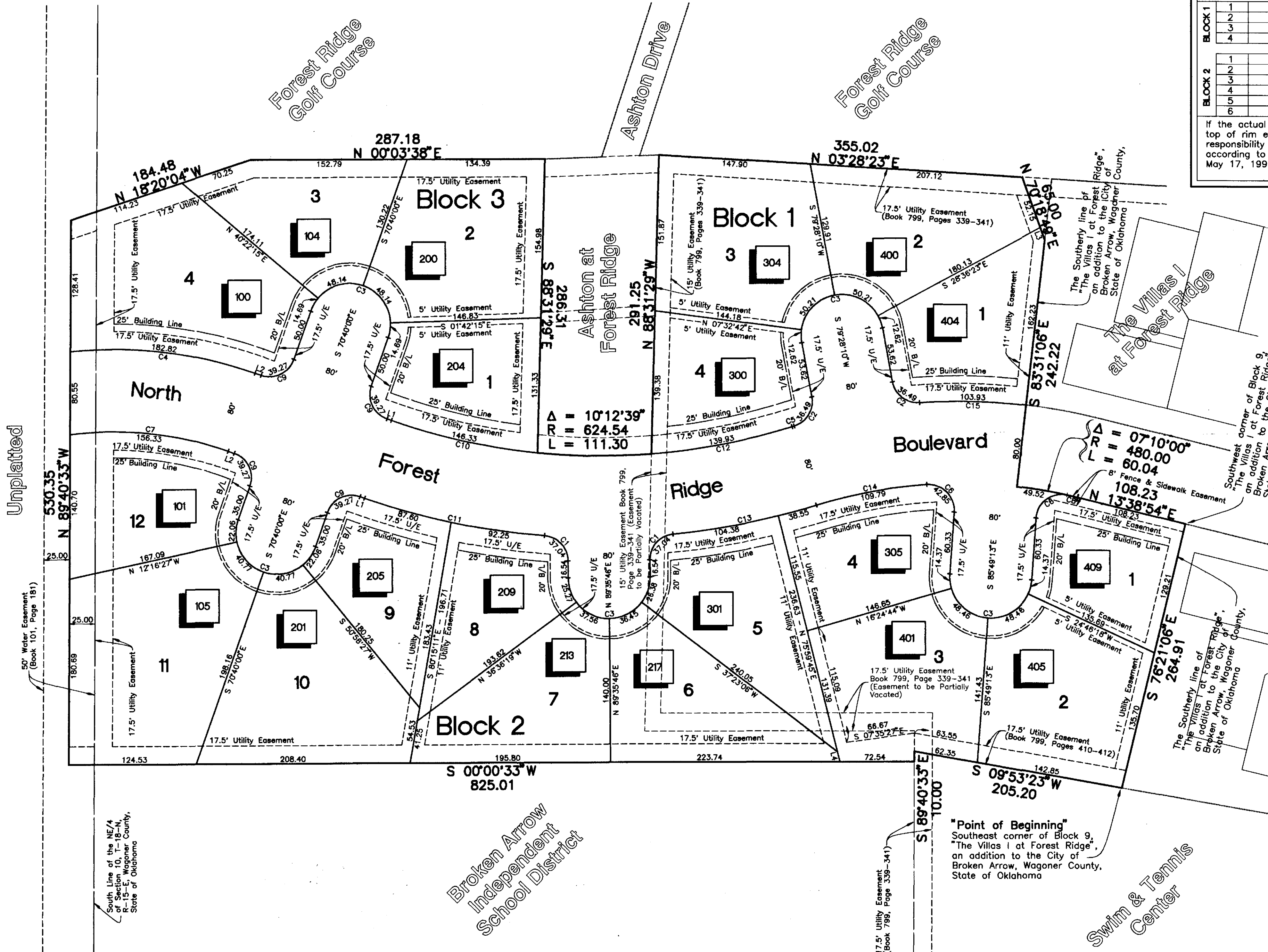
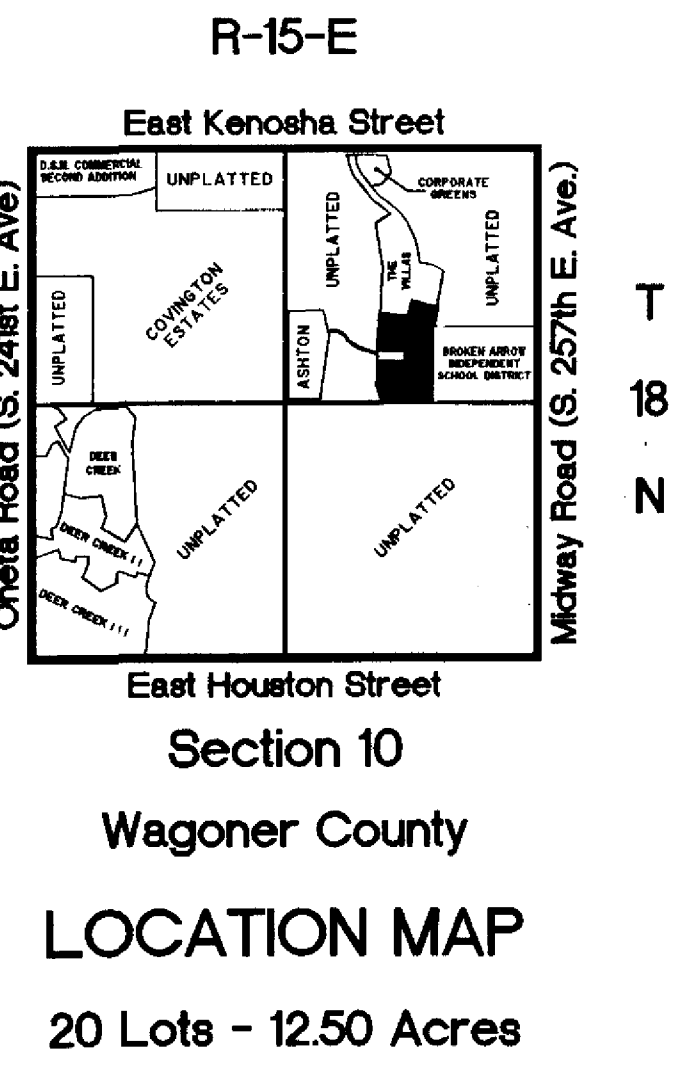
An Addition to the City of Broken Arrow
Being a Subdivision of a part of the NE/4 of Section 10,
T-18-N, R-15-E, Wagoner County, State of Oklahoma

APPROVED 5-2-94 by the City Council of the City of Broken Arrow, Oklahoma.
James Reynolds mg
Wanda Rinkart mg
Attest: City Clerk

94-000-0013-0016

BLOCKS	LOTS	PROPOSED FINISH FLOOR ELEVATION	UPSTREAM MANHOLE	TOP OF RIM ELEVATION	BLOCKS	LOTS	PROPOSED FINISH FLOOR ELEVATION	UPSTREAM MANHOLE	TOP OF RIM ELEVATION
BLOCK 1	1	632.0	b	628.5	BLOCK 2	7	633.5	5	633.2
	2	631.0	C	626.6		8	632.0	o	632.6
	3	632.0	C	626.6		9	633.7	o	632.6
	4	632.0	D	631.8		10	634.1	o	632.6
BLOCK 2	1	632.0	13	629.8	BLOCK 3	1	633.7	11	630.6
	2	633.1	13	629.8		2	633.6	9	631.1
	3	632.0	2	629.0		3	634.0	9	631.1
	4	632.0	1	629.6		4	633.7	10	631.8
5	632.0	1	629.6						
6	633.5	4	632.4						

If the actual finish floor elevation is lower than one (1) foot above the top of rim elevation of the upstream manhole, it shall be the builder's responsibility to install a Backflow Preventer Valve near the building according to Broken Arrow Ordinance No. 1777, Section 24-100, Adopted May 17, 1993.



Benchmark
Chiseled "C" on top of curb at the south end of curb return in the southeast quadrant of Forest Ridge Boulevard and East Freepost Street. Elevation = 627.35 (N.G.V.D.)

Basis of Bearings
The basis of bearings is an assumed bearing N 00°00'00" along the west line of Section 10, T-18-N, R-15-E, of the Indian Meridian, Wagoner County, State of Oklahoma

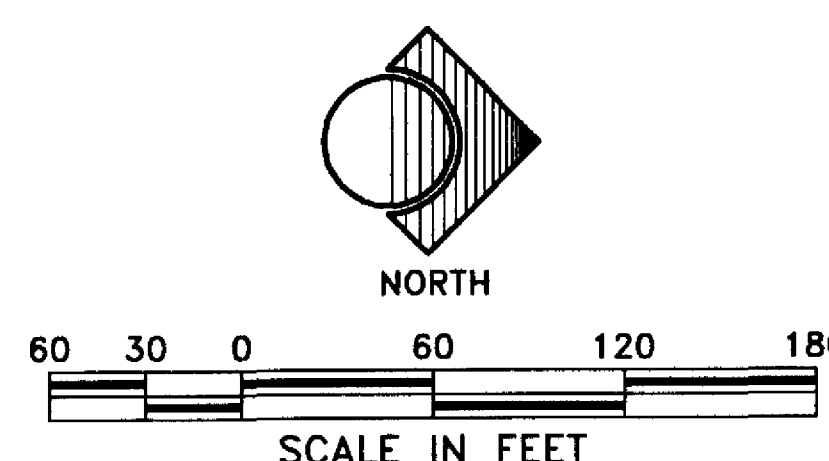
Monument Notes
A 5/8" x 18" deformed bar with a yellow plastic cap stamped "RLS 1253" to be set at all lot boundary corners, prior to improvements, unless noted otherwise.
A 3/8" x 18" deformed bar with a yellow plastic cap stamped "RLS 1253" to be set at all lot corners after completion of improvements, unless noted otherwise.
A 3/8" x 18" deformed bar with a yellow plastic cap stamped "RLS 1253" to be set at all street centerline intersections, points of curve, points of tangent, points of compound curve, points of reverse curve, center of cul-de-sacs and center of eyebrows, after completion of improvements, unless noted otherwise.

Legend
U/E = Utility Easement
B/L = Building Line
000 = Lot Address on North Forest Ridge Boulevard

Addresses shown on this Plat provided by the City of Broken Arrow Planning Department are accurate at the time the plat was filed, and the addresses are subject to change and should not be relied on in place of the legal description.

NO.	DELTA	RADIUS	ARC
C1	84°53'18"	25.00	37.04
C2	83°37'14"	25.00	36.49
C3	180°00'00"	40.00	125.66
C4	25°03'36"	418.00	182.82
C5	00°13'44"	560.00	2.24
C6	98°12'48"	25.00	42.85
C7	26°29'58"	338.00	156.33
C8	01°15'19"	480.00	10.52
C9	90°00'00"	25.00	39.27
C10	13°25'28"	624.54	146.33
C11	14°37'33"	704.54	179.85
C12	12°50'14"	624.54	139.93
C13	11°37'24"	704.54	142.93
C14	13°06'20"	480.00	109.79
C15	10°37'59"	560.00	103.93

NO.	BEARING	DISTANCE
L1	S 19°20'00"W	4.66
L2	N 19°20'00"E	6.39
L3	N 70°18'49"E	12.85
L4	N 75°59'45"E	10.31



I, the undersigned, the duly qualified and acting county Treasurer, of Wagoner County, Wagoner, Oklahoma, hereby certify that according to the 1993 tax rolls the taxes on the above description are paid.

Mary Sue Tedder, County Treasurer
G. Lynn Marshall
Deputy