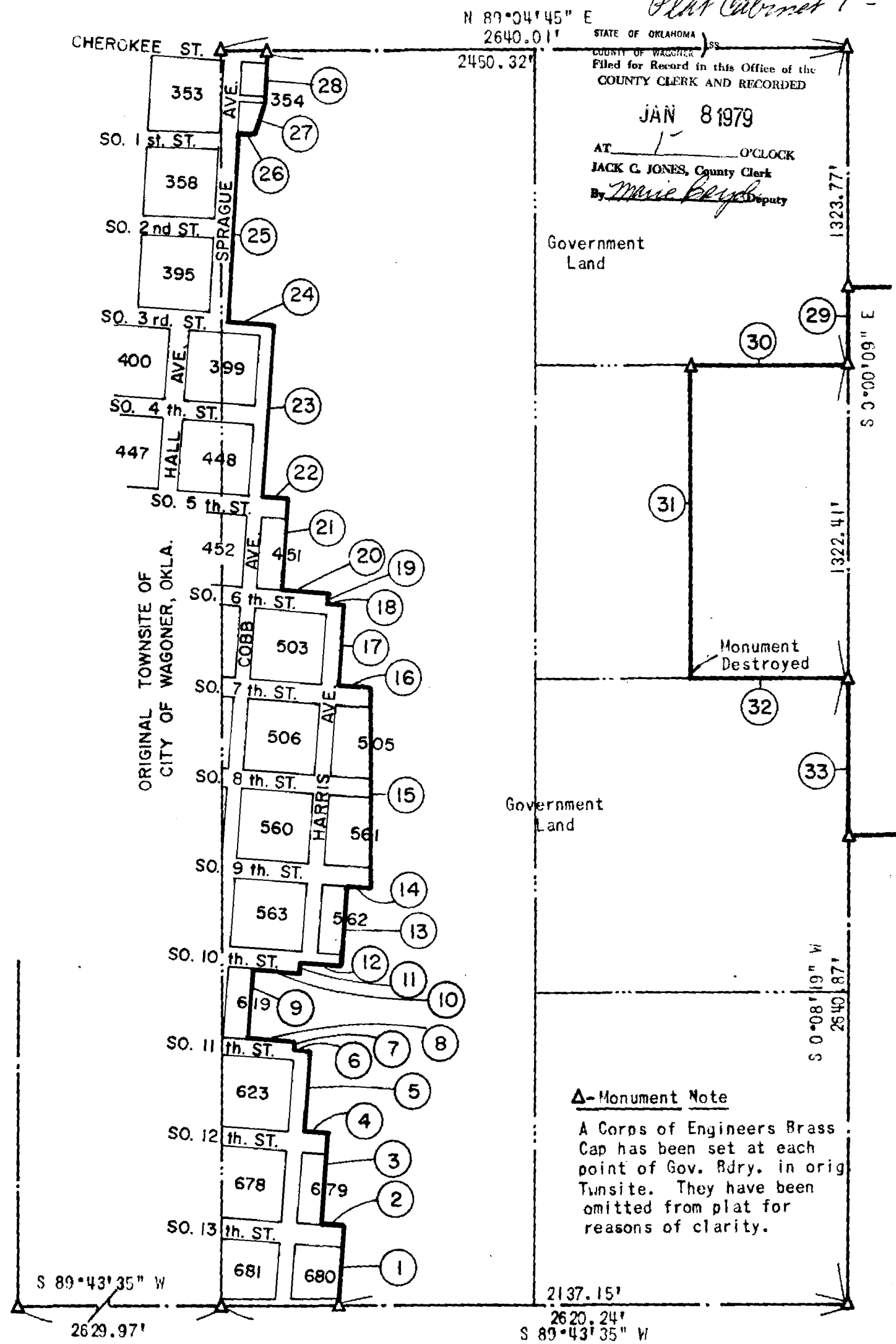


PARTIAL BOUNDARY SURVEY
FORT GIBSON LAKE
 EAST ONE HALF
 SECTION 14, T 17 N, R 18 E **WAGONER COUNTY**

Performed Under Contract No.
 DACW 56-73-D-0245.

Plat Cabinet 1 - 7A.



EAST ONE HALF
 SECTION 14, T 17 N, R 18 E
 (CONTINUED)

Plat Cabinet 1 - 7A.

STATE OF OKLAHOMA)
 COUNTY OF WAGONER)
 Filed for Record in this Office of the
 COUNTY CLERK AND RECORDED

JAN 8 1979

AT 1 O'CLOCK
 JACK C. JONES, County Clerk
 By *Maria Boyd* Deputy

Course No.	Distance	Bearing	Course No.	Distance	Bearing
1	336.83'	N 03°57'29" E	15	842.51'	N 00°08'30" W
2	100.00'	N 86°02'31" W	16	140.39'	N 86°02'31" W
3	379.88'	N 03°57'29" E	17	340.03'	N 03°57'29" E
4	100.00'	N 86°02'31" W	18	60.00'	N 86°02'31" W
5	339.87'	N 03°57'29" E	19	40.00'	N 03°57'29" E
6	60.00'	N 86°02'31" W	20	200.00'	N 86°02'31" W
7	39.84'	N 03°57'29" E	21	380.00'	N 03°57'29" E
8	200.00'	N 86°02'31" W	22	100.00'	N 86°02'31" W
9	300.00'	N 03°57'29" E	23	723.93'	N 03°57'29" E
10	200.00'	S 86°02'31" E	24	196.50'	N 86°02'11" W
11	39.84'	N 03°57'29" E	25	799.24'	N 03°19'49" E
12	150.00'	S 86°02'31" E	26	70.00'	S 88°40'11" E
13	339.98'	N 03°57'29" E	27	147.25'	N 15°06'08" E
14	100.00'	S 86°02'31" E	28	177.18'	N 03°19'49" E

The following courses were set
 by Corps of Engineers in 1951 & 1952 & recovered on this survey.

29	330.84'	S 00°00'09" E	32	659.83'	N 89°05'09" E
30	659.99'	S 89°04'40" W	33	660.39'	S 00°08'19" W
31	1322.34'	S 00°00'34" E			

CERTIFICATE OF SURVEY

Field Book No. 5-1963

Date: Dec. 22, 1978.

I hereby certify that the above plat is a true and correct representation of the survey made in Section 14, T 17 N, R 18 E, Wagoner County, Oklahoma.

SULLIVAN & GILBERT, INC.
 Consulting Engineers

Under the supervision of
 U.S. ARMY ENGINEER DISTRICT, TULSA
 CORPS OF ENGINEERS

LEGEND

- △ C of E Monument
- Iron Pin
- Original Stone

Sullivan & Gilbert
 REGISTERED LAND SURVEYOR L.S. #122